

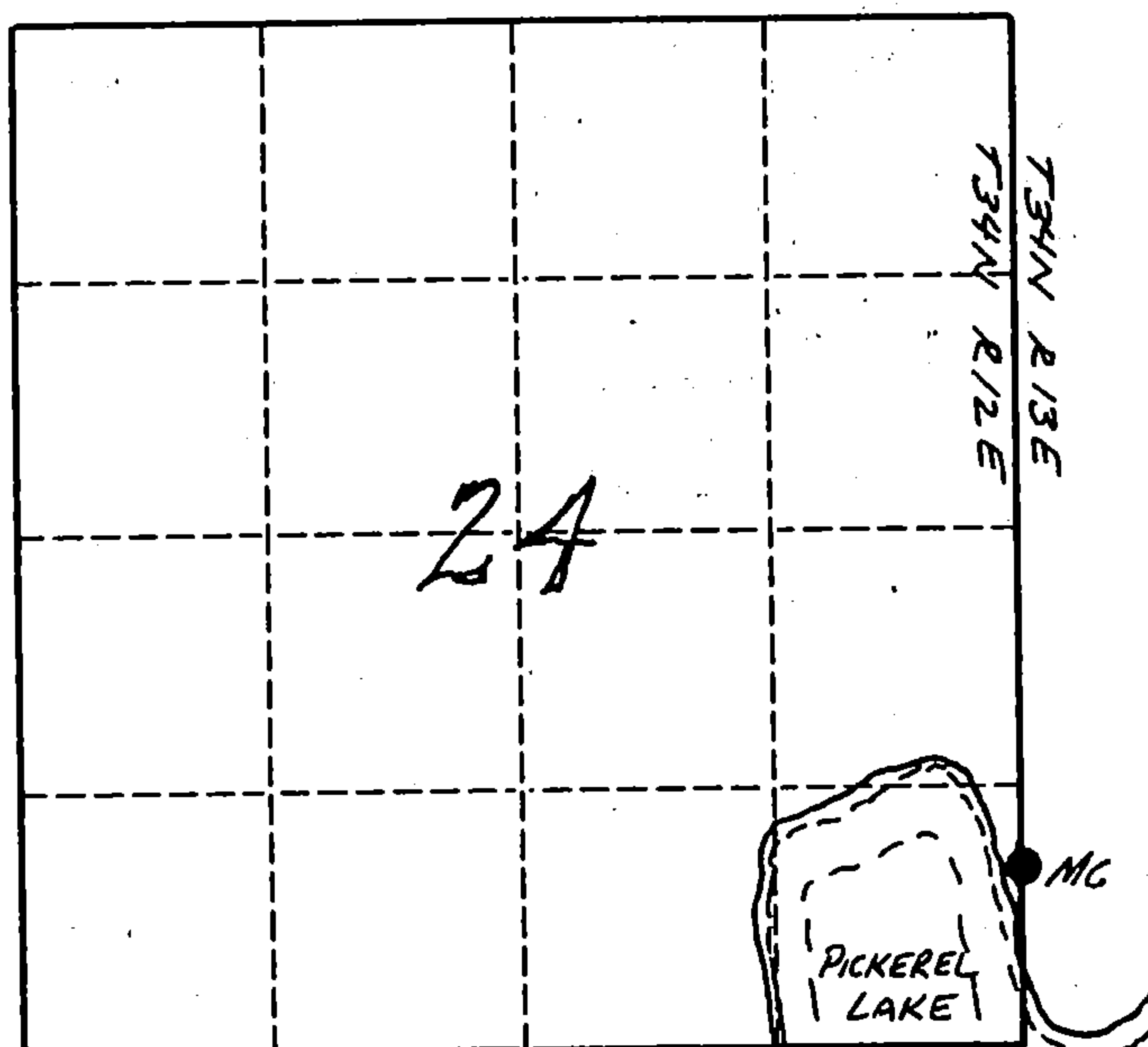
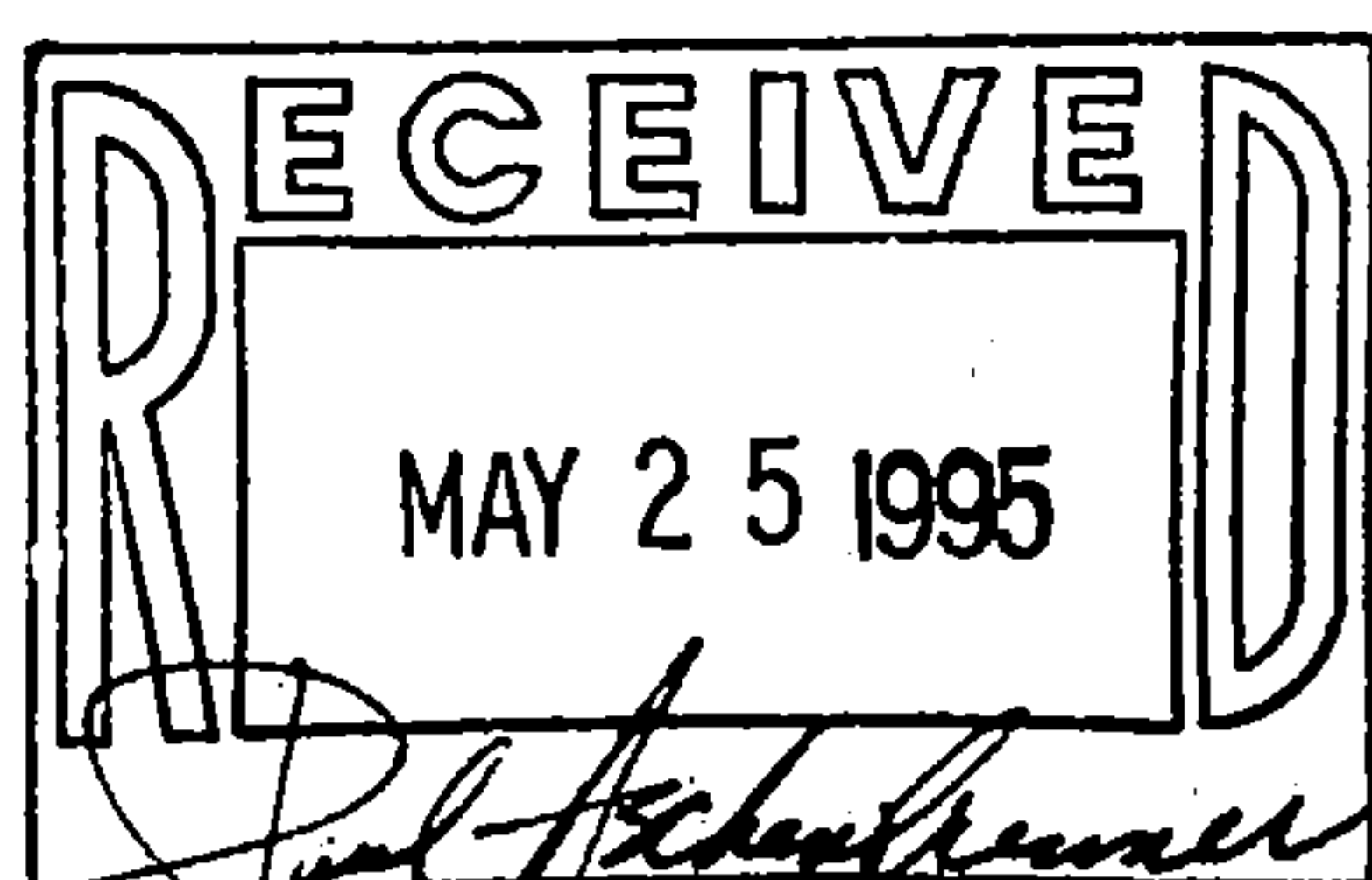
U. S. PUBLIC LAND SURVEY MONUMENT RECORD

INSTRUCTIONS:

This record shall show the location of the corner and shall include all of the following nine elements (a through i).

- (a) Identify the corner by reference to the U.S. public land survey system.
● = Corner monument restored.

The meander corner between Section 24, T34N, R12E and Section 19, T34N, R13E, on the Langlade-Forest County line, on the north side of Pickerel Lake.



Copy from Langlade Co Surveyor - Orig filed Langlade Co

- (b) Describe any record evidence, monument evidence, occupational evidence, testimonial evidence or any other material evidence you considered, and whether the monument was found or placed.

The original corner was established in 1857 by Alfred Millard. OBT's: tamarac, 12", N87E, 29 lks., and tamarac, 6", N22W, 7 lks.

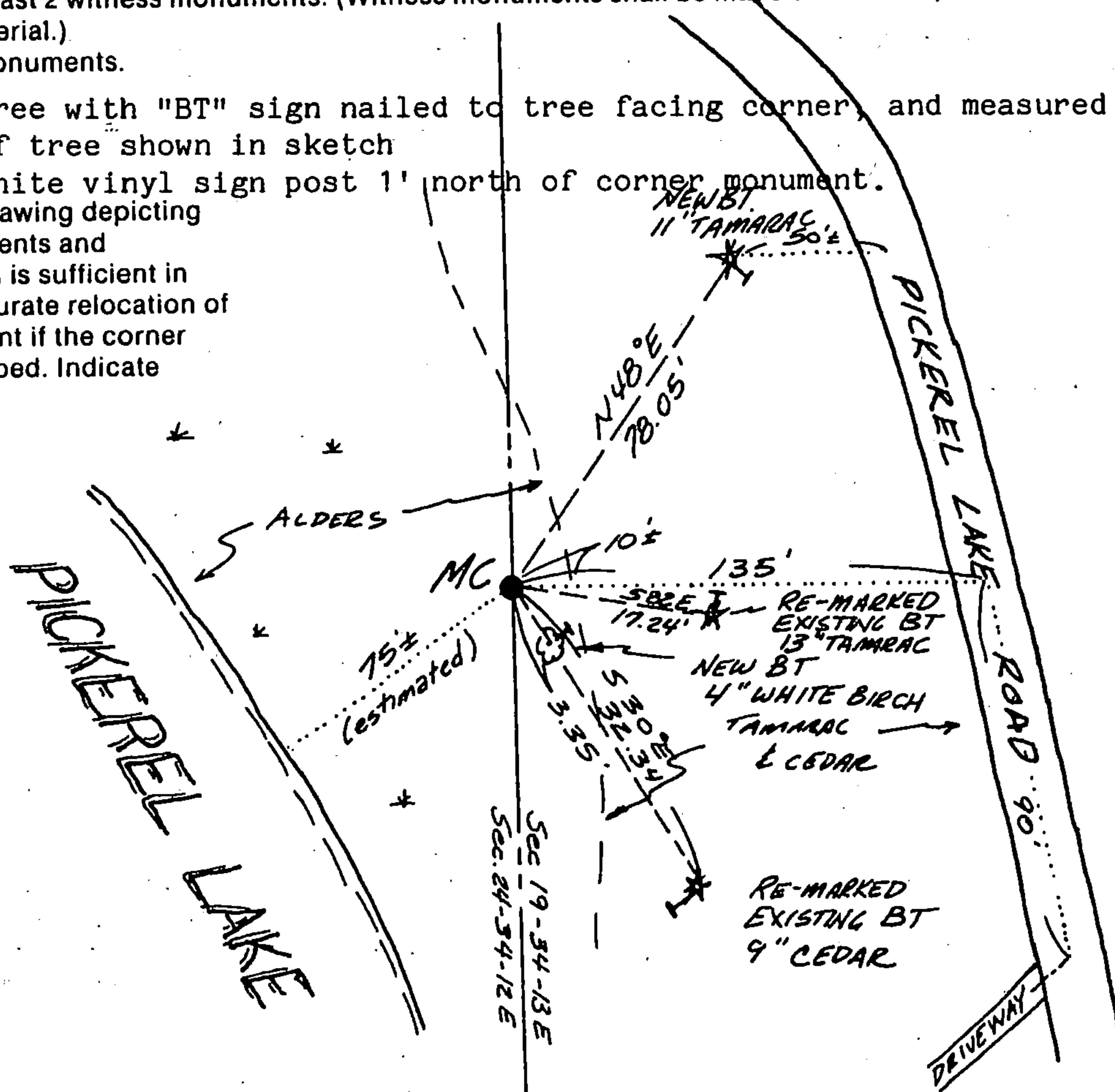
05/11/95 D. Tlusty found 2" iron pipe with brass cap set in 1941 by C. E. Walker, as evidenced by stampings on the cap. At the south side of the pipe, I found a 3½" dia. wood post, flatted smooth on two sides, and almost completely rotted off. This could very well be a post found by Walker and I believe could possibly be the original post. From Walkers pipe, I find a 13" tamarac with very old low and high blazes facing the corner. I believe this is the original bearing tree as I measure 17.24' to a nail I set in the north side of it, and it is on a compass bearing of S82E from the corner. Although the direction and distance to the tree don't work exactly with the original, I have to believe that (continued on reverse)

- (c) In the plan view drawing below, provide reference ties to at least 4 witness monuments, or, if the location is within a municipality, to at least 2 witness monuments. (Witness monuments shall be made of concrete, natural stone, iron or other equally durable material.)
Describe witness monuments.

☉ = bearing tree with "BT" sign nailed to tree facing corner, and measured to nail (✓) on side of tree shown in sketch

Set 6' long white vinyl sign post 1' north of corner monument.

- (d) Show a plan view drawing depicting the relevant monuments and reference ties which is sufficient in detail to enable accurate relocation of the corner monument if the corner monument is disturbed. Indicate north.



FOREST & R-1
LANGLADE & R-12 25
34-12

4341224 0600

Describe any material discrepancy between the location of the corner as restored or reestablished and the location of that corner as previously restored or reestablished by distance and direction. Show the discrepancy on the plan view drawing under (d), above. Show the distances between the corner as previously restored or reestablished and (1) the corner as restored or reestablished, and (2) to at least 2 of the witness monuments shown on the drawing in (d), above.

No discrepancy.

1-90-238954
F-05822-05-1

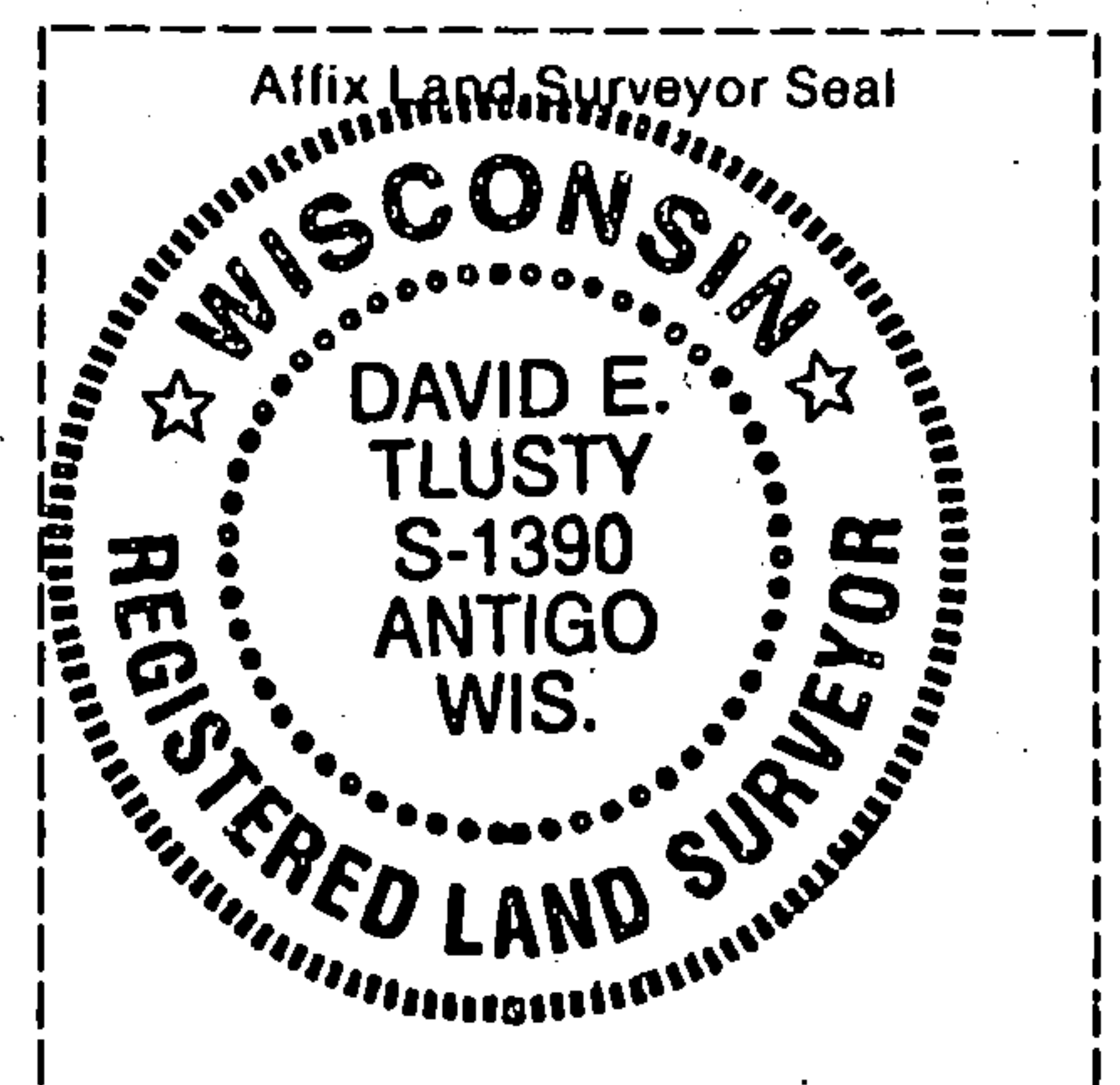
- (f) Was the corner restored through acceptance of (1) an obliterated evidence location, or, (2) a found perpetuated location?
(continued from front side)
perpetuated physical evidence of the original corner post. I therefore accept Walkers pipe as the best evidence of the original corner location.

- (g & h) Was the corner reestablished through lost corner proportionate methods? If so, show the method, including the directions and distances to other public land survey corners used as evidence or used for proportioning in determining the corner location.

No.

(i) I, David E. Tlusty, Langlade County Surveyor
(type or print name)

certify that the corner location shown on this record was determined by me or under my direction and control and that this U.S. Public Land Survey Monument Record is correct and complete to the best of my knowledge and belief.



David E. Tlusty 5/19/95
Signature Date