

Document Number

176286

U.S. PUBLIC LAND SURVEY MONUMENT RECORD

(As Required by WI Adm. Code)

History of original corner establishment and subsequent restorations and descriptions of any record, monument, occupational, testimonial or other evidence considered:

- 1857 – Alfred Millard, marked a 36" Dia. W. Pine for Meander Corner and made the following B.T.'s:
W. Pine 18", N 39° E, 17 lks., 11.22 feet
W. Pine, 14", S 70° W, 33 lks., 21.78 feet.
- 1946 – The U.S. General Land Office performed a Dependent Resurvey of Section 6, T34N R14E. The meander corner was recovered in that survey and was mentioned as a rotted pine stump. A 6" dia. X 24" long concrete monument with a stamped brass cap was set at this location. The following new B.T.'s were made: Elm 6", N 62 1/2° E, 34 lks. 22.44 feet
W. Pine 18", N 36 3/4° W, 122.5 lks, 80.85 feet
- 2002 – I found the 6" dia. concrete monument mentioned above in excellent condition. Made the following new B.T.'s: Oak 13", S 32° W, 9.87 feet; Oak 9", N 18° W, 38.28 feet
Oak 9", S 77° W, 61.17 feet; 2" Iron Pipe, N 02° E, 21.04 feet

Corner was: (Check All That Apply)

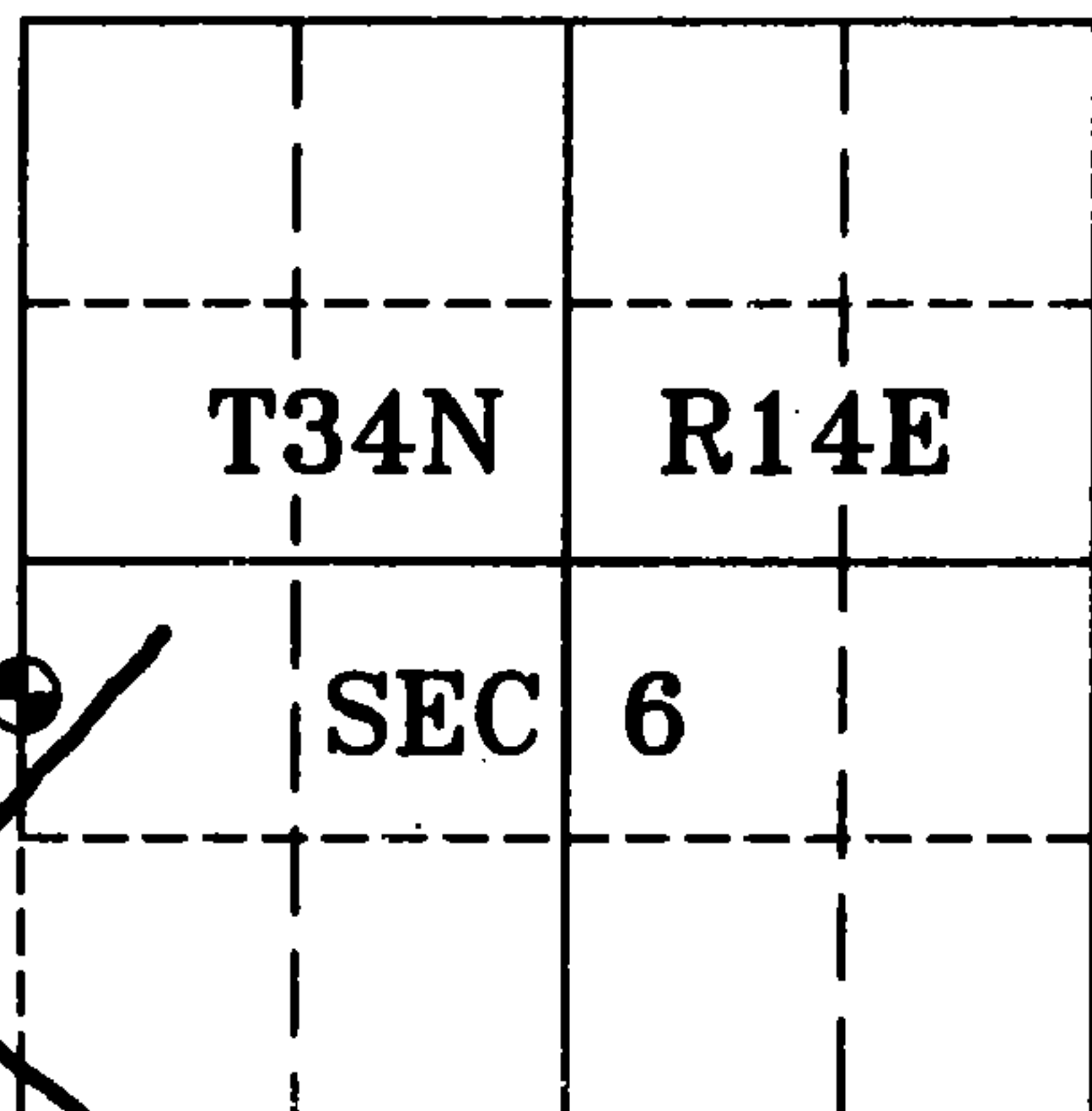
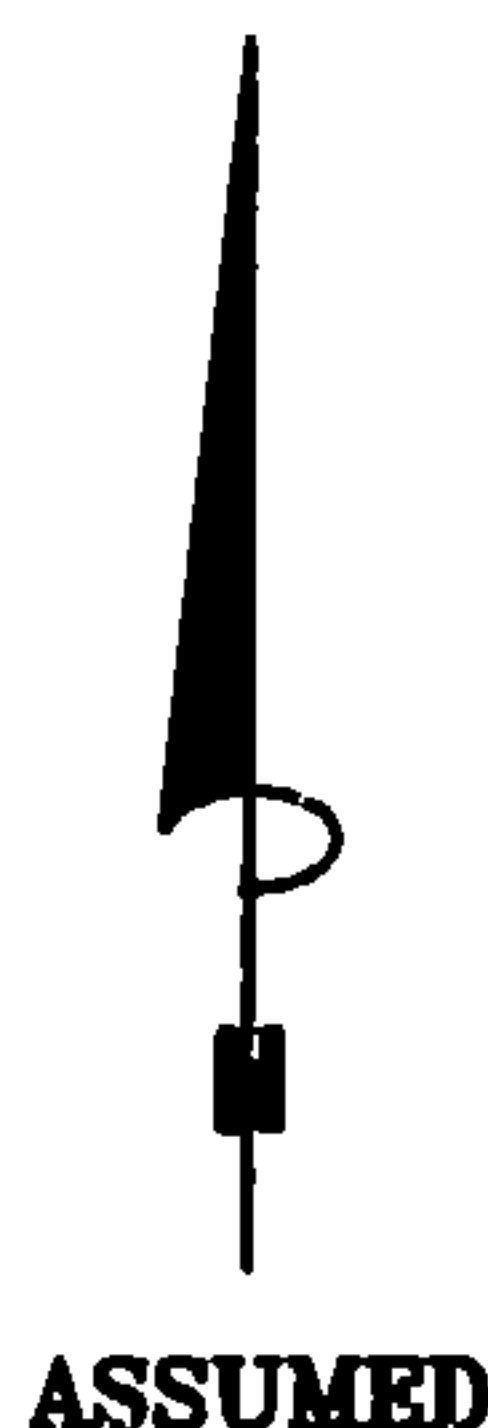
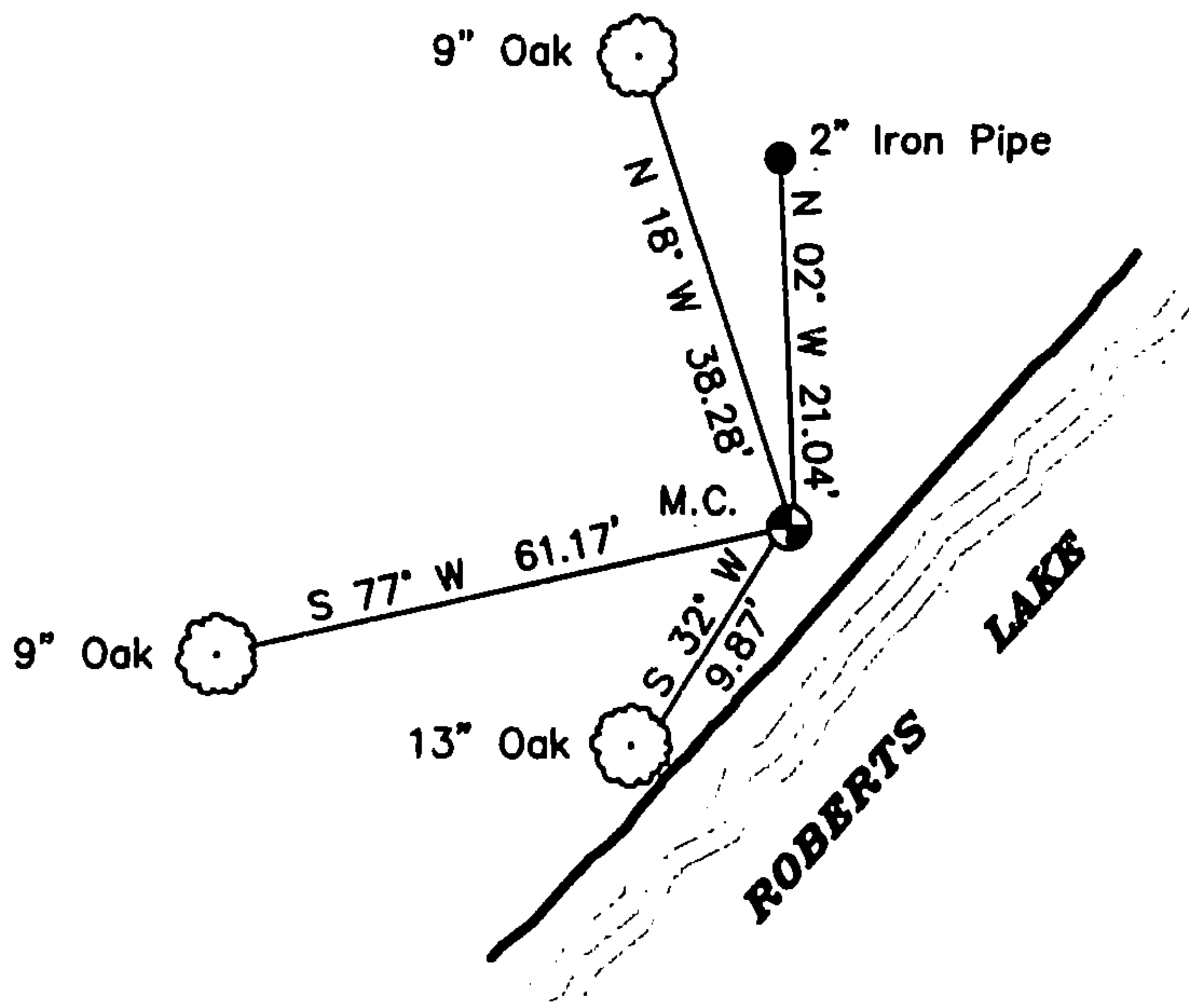
- ☐ Restored through acceptance of an obliterated evidence location.
☒ Restored through acceptance of a found perpetuated location.
☐ Considered a lost corner and reestablished through lost corner proportionate methods (include a plan view drawing showing distances and directions to other Public Land Survey Corners used for proportioning and determining the corner location).
☐ Restored or reestablished in a location that differs from a previous restoration or reestablishment (include a plan view drawing and indicate what was set and/or found).

Describe the monument and accessories used to perpetuate the location of this corner (include a plan view drawing and indicate what was set and/or found).

LEGEND:

- Found 6" dia. Con. Mon.
W/Stamped Brass Cap

Note: All distances are taken to nail in side of tree.



I, Michael A. Trembl, RLS
(type or print name) certify that the corner location shown on this record was determined by me or under my direction and control and that this U.S. Public Land Survey Monument Record is correct and complete to the best of my knowledge and belief.

Michael A. Trembl 7/15/02
Signature Date

The North Meander corner of
Section 6 T. 34 N., R. 14 E.
Forest County, WI

Index No. C,D-1

43413011800