

DOCUMENT NUMBER  
145207

FORM 985 H. C. MILLER CO., MILWAUKEE

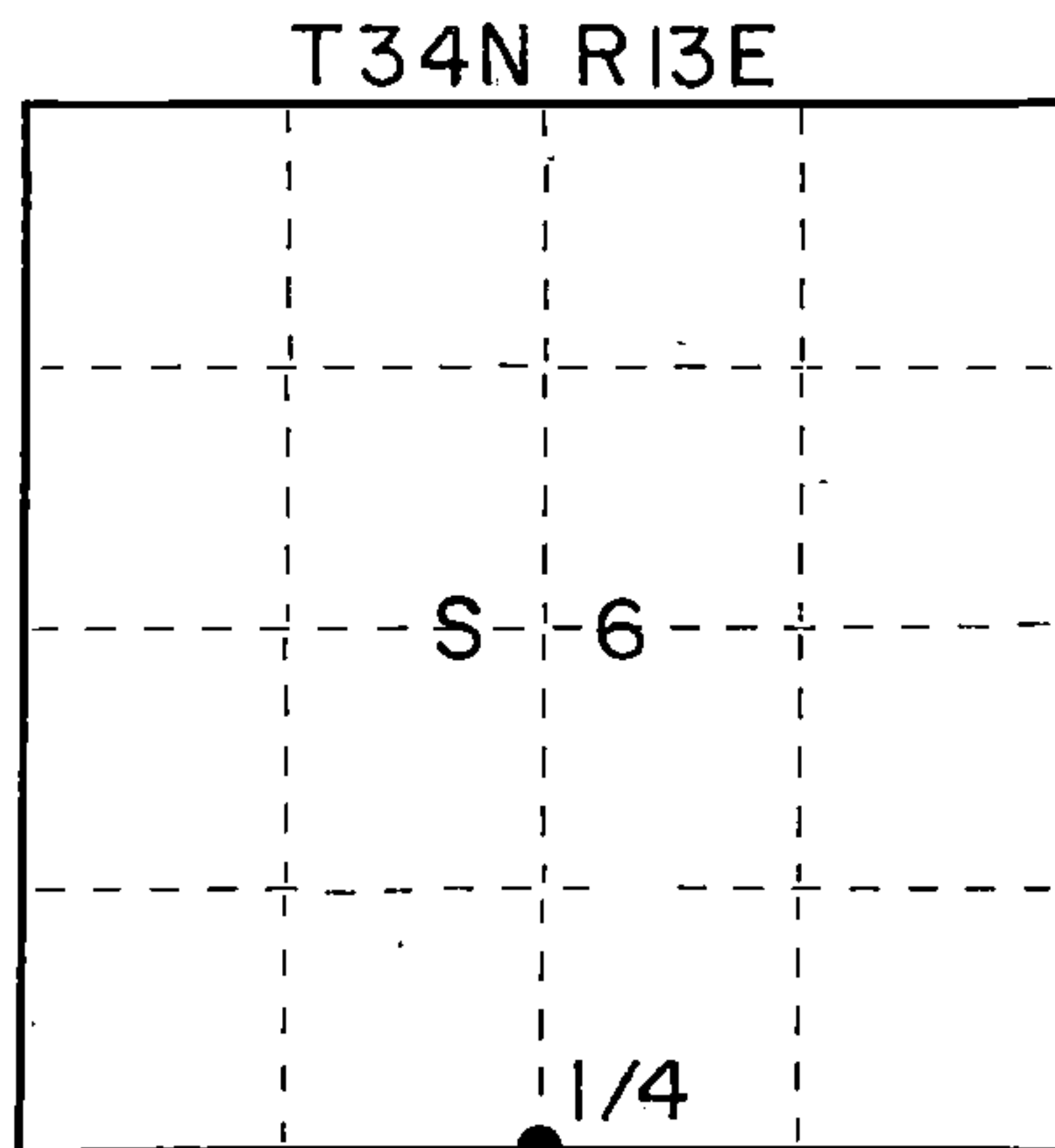
State of Wisconsin }  
County of FOREST } ss.

I, Glen Barker, do hereby  
certify that on the 7th day  
of November, 1991, I found  
evidence of the Quarter Section  
corner of Section 6 & 7  
Township 34, North, Range  
13 East, Fourth Principal Meridian,  
as described hereon; and that from this evidence  
I established a new monument and accessories  
as described hereon to perpetuate the original  
location of this corner.

Resident witnesses:

N. Spiess

J. Spiess



CERTIFIED LAND CORNER RESTORATION  
U.S. PUBLIC LAND SURVEY

Index No. E-3

History of original corner establishment:

Original corner established in 1865 by James L. Nowlin, Government Deputy Surveyor, from  
which Sugar 8" N15W 10 lks and Fir 7" S34E 6 lks.

Description of corner evidence found:

Re-established quarter Section corner on a proportional measurement to the original G.L.O.  
survey.

Total distance from southeast Section corner to southwest Section corner Section 6 is 5507.97'.

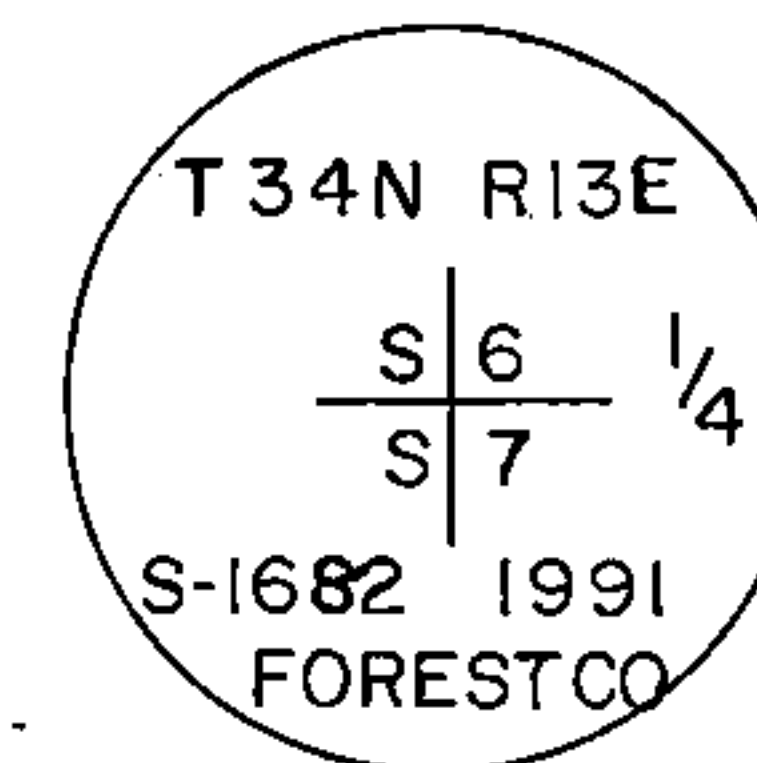
Set Quarter Section corner 2667.30' of southeast Section corner and 2840.67' of southwest  
Section corner on a straight line between the two. No evidence of original or other corner.

Description of monument and accessories I established to perpetuate the original location of this corner.

Set a 2-1/4" Forest County Aluminum Monument with 3-1/4" alloy cap stamped.  
Monument projects 6" above ground.

MARKED N.B.T.'s:

Twin White Ash	14"	N57W	44.46'
Sugar	8"	N4W	45.59'
Sugar	6"	N35E	30.64'
Sugar	9"	N85E	30.44'



Dated at Rhineland, Wis., this 24th day of July, 1992.

Signature Glen Barker Title Registered Land Surveyor Registration No. S-1682  
(County Surveyor, Registered Land Surveyor, or other duly authorized official)

Office of Register of Deeds, County of Forest, I hereby certify that the within  
instrument was filed in this office for record on the 13th day of August, 1992  
at 9:30 o'clock A. M.

Paul Aschenbrenner  
(Register of Deeds)

By \_\_\_\_\_ Deputy

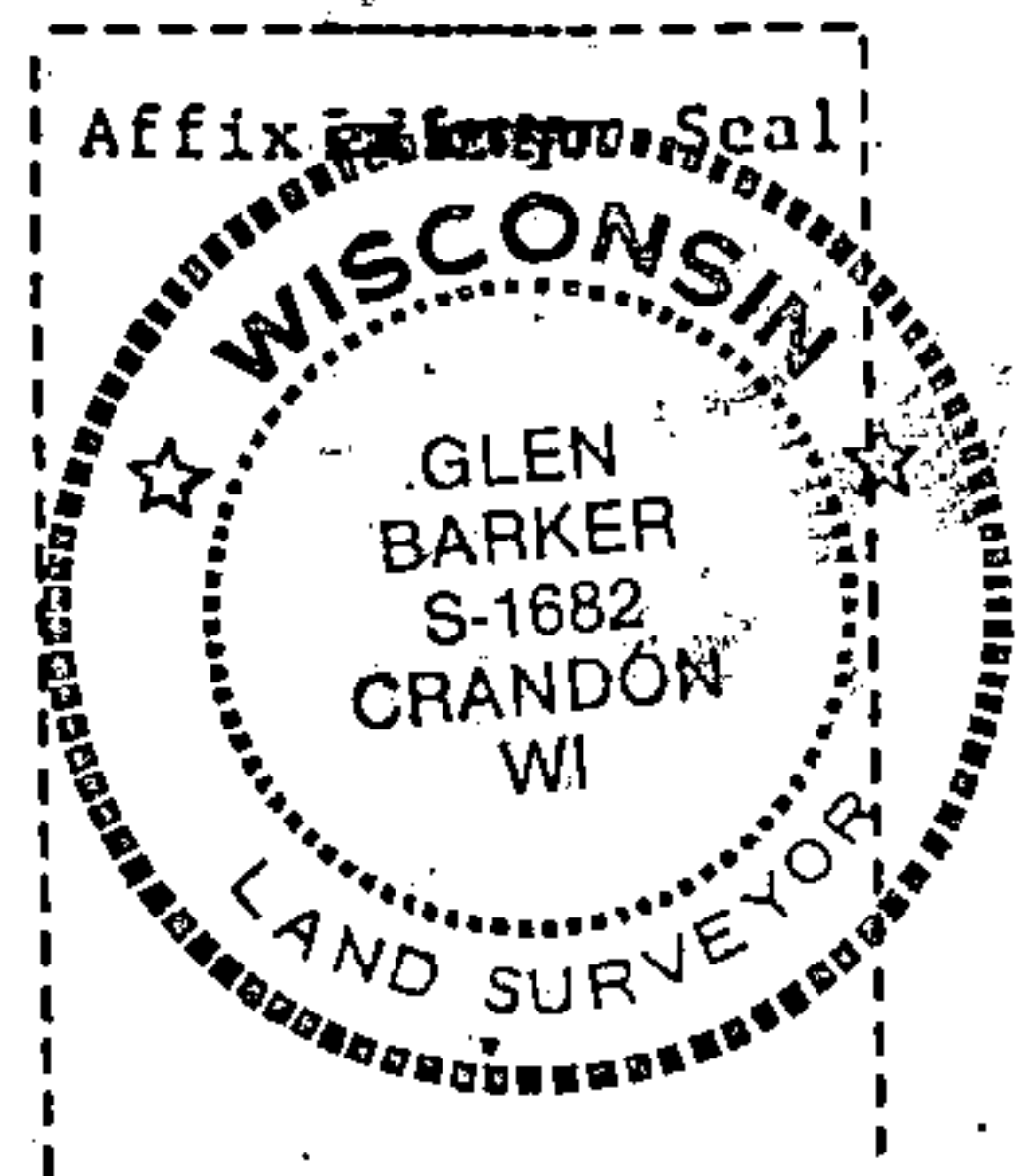
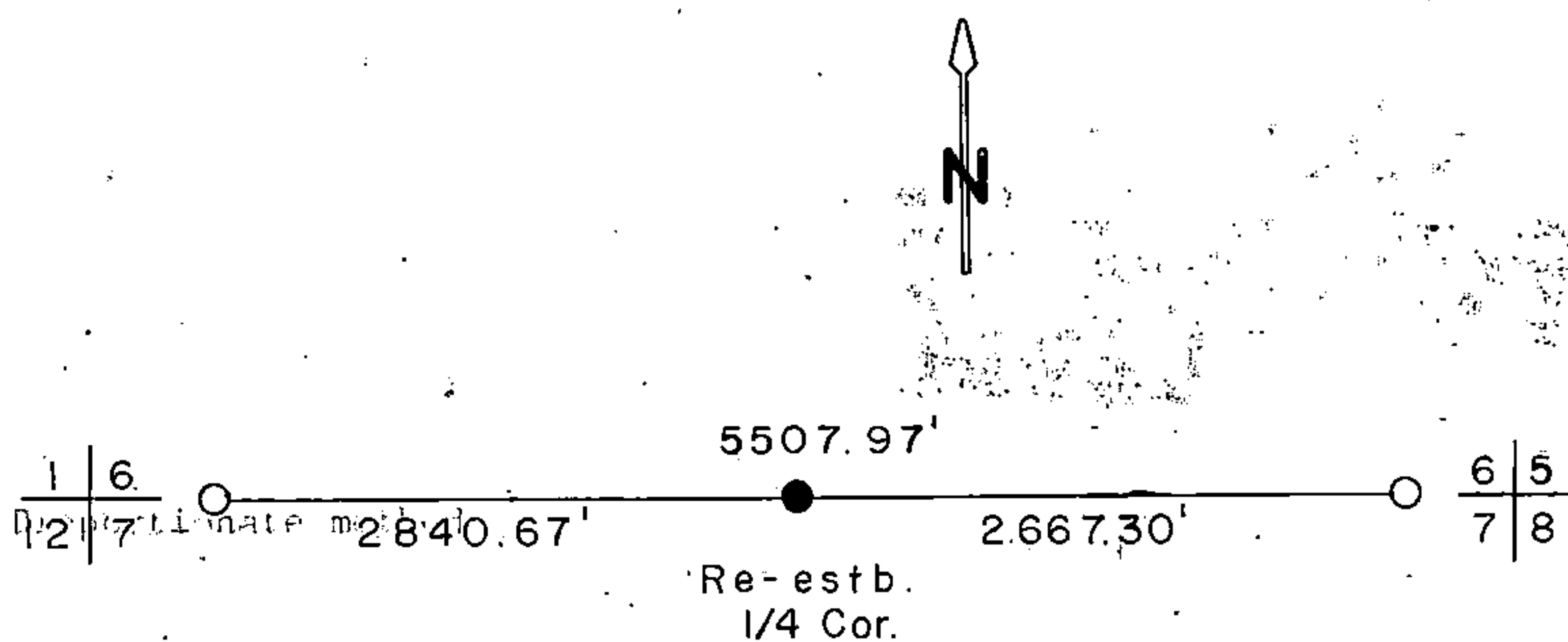
7341306.00 20

Describe any material discrepancy between the location of the corner as restored or reestablished and the location of that corner as previously restored or reestablished by distance and direction. Show the discrepancy on the plan view drawing under above. Show the distances between the corner as previously restored or reestablished and (1) the corner as restored or reestablished, and (2) to at least 2 of the monuments shown on the drawing in (d), above.

(f) Was the corner restored through acceptance of (1) an obliterated evidence location found perpetuated location?

(g&h) Was the corner reestablished through lost corner proportionate methods? If so, state method, including the directions and distances to other public land survey corners evidence or used for proportioning in determining the corner location?

Proportionate method



(i) I, Glen Barker  
(type or print name) certify that the corner location shown on this record was determined by me or under my direction and control and that this U.S. Public Land Survey Monument Record is correct and complete to the best of my knowledge and belief.

Glen Barker  
Signature

7/24/92  
Date