

U S PUBLIC LAND SURVEY MONUMENT RECORD

NOTE: This form is intended and designed to fulfill all requirements of Wisconsin Administrative Code, Chapter A-E 7.08 U.S. Public Land Survey Monument Record (3) (a-i)

A-E 7.08(3)(a) Identity of corner
SOUTHEAST CORNER OF SECTION 19
TOWNSHIP 34 NORTH
RANGE 13 EAST OF THE 4TH PM
TOWN OF NASHVILLE,
COUNTY OF FOREST

WISCORS - FOREST COUNTY
N: 511,491.544 USft
E: 835,492.497 USft
Datum: NAD83 (2011)
GNSS Method RTN - Direct
GNSS Control WISCORS VRS



The coordinate value shown has been verified by 2 distances were measured back to the observed corner from temporary GPS observed offset locations.

A-E 7.08(3)(b) Description of any record evidence, monument evidence, occupational evidence, testimonial evidence, or any other material evidence.

Original Surveyor: James L. Nowlin

Date of Original Survey Commenced: October 3, 1865
 Completed: October 18, 1865

Original Accessories:

Hemlock 12 N 25° W 12 lks.
Hemlock 10 N 51° E 10 lks.

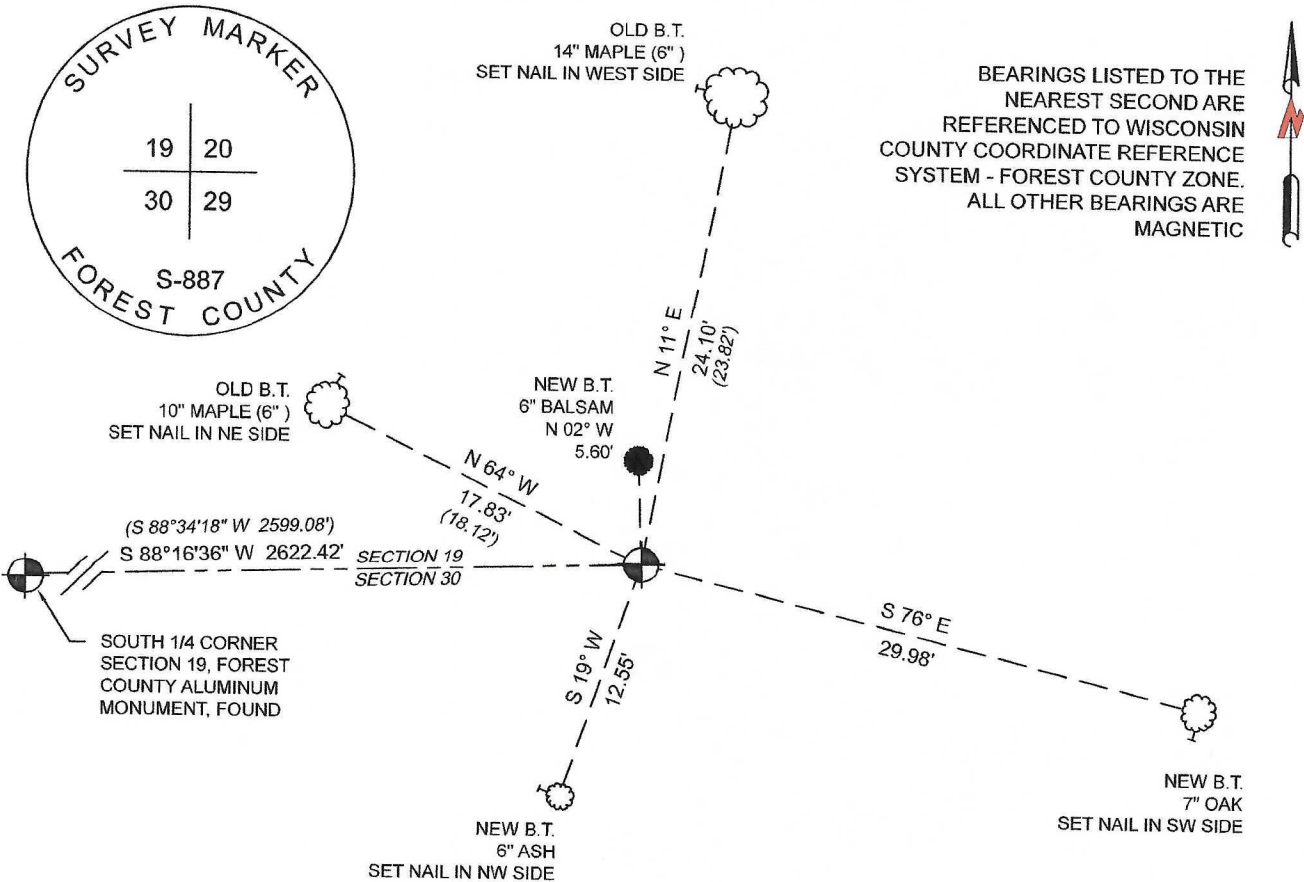
See Previous Monument Record:
Index No. R-5
Document No. 125077

January 27, 1984 - Surveyor 887 - Thomas R. Arnott - found a 1 1/4" well point. No other evidence found. Arnott replaced the iron well point with a Forest County aluminum monument.

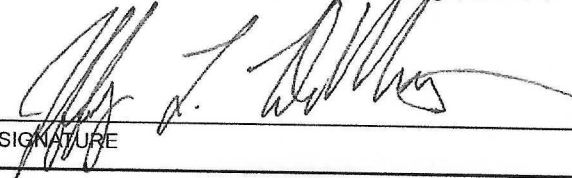
A-E 7.08(3)(f) The corner is a found perpetuated location.

August 9, 2021 - I found a 2 1/2" diameter aluminum pipe with a 3 1/4" diameter aluminum capped Forest County aluminum monument stamped to identify the corner. I also found 2 of Arnott's witness monuments intact, and established 3 new witness as shown below.

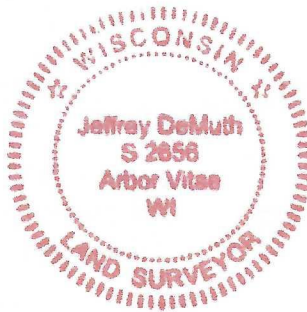
A-E 7.08(3)(c)(d)(e)(h) Plan view of corner with references to at least 4 witness monuments. If in disagreement with previously established corner, show the distances between the two corners and also indicate the ties to the disputed. The directions and distances to other public land survey corners used as evidence or used for determining the corner location.



A-E 7.08(3)(i) I, Jeffrey L. DeMuth, Professional Land Surveyor No. S-2656, hereby certify that the corner location on this record was determined by me or under my direction and control and that this U.S. Public Land Survey Monument Record is correct and complete to the best of my knowledge, and belief


SIGNATURE

February 2, 2022
DATE



43413190000

U. S. PUBLIC LAND SURVEY MONUMENT RECORD

INSTRUCTIONS: This record shall show the location of the corner and shall include all of the following nine elements (a through i).

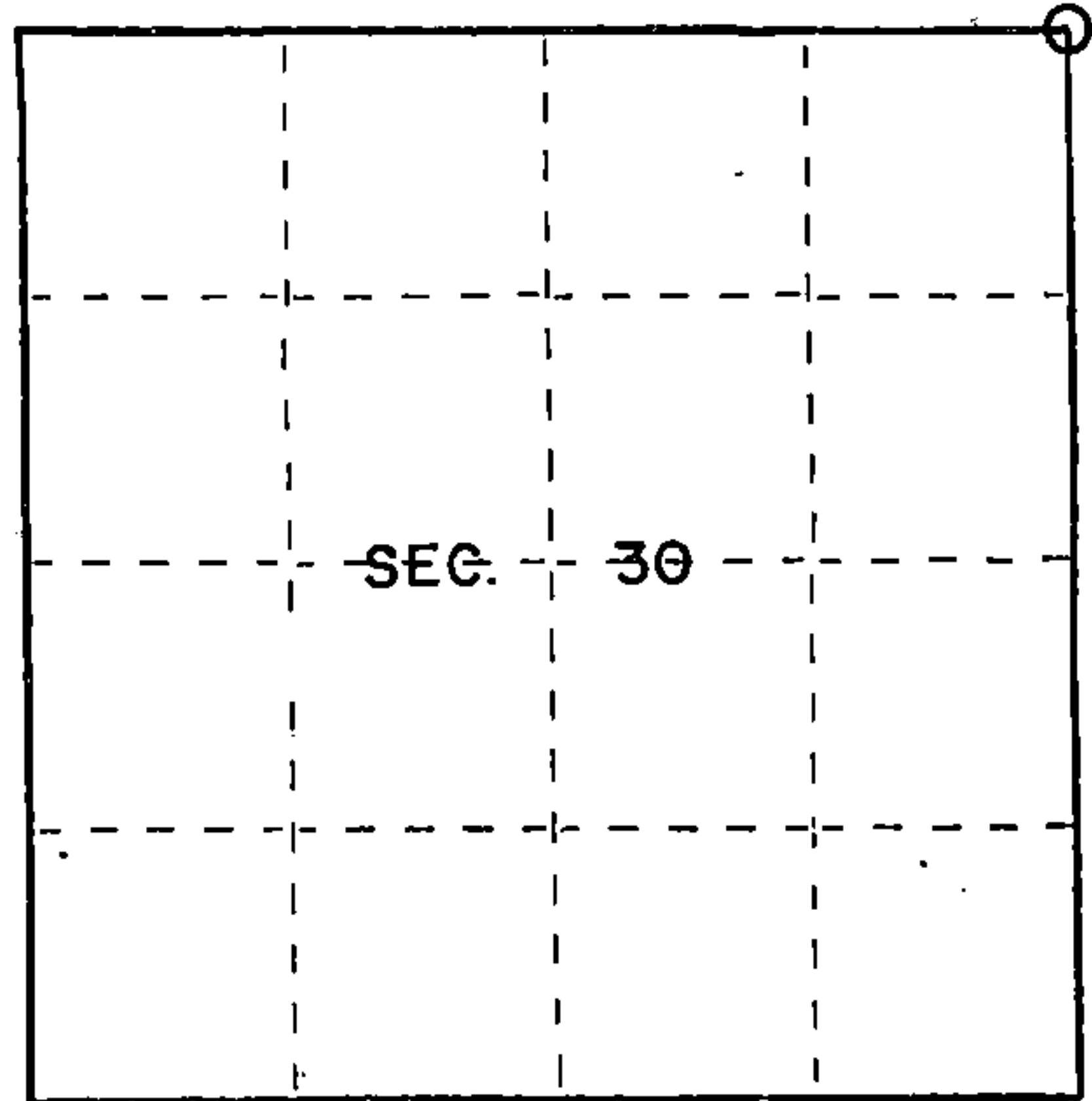
- (a) Identify the corner by reference to the U.S. public land survey system.

○ = Corner monument restored.

Section Corner 19, 20, 29 & 30

T34N, R13E

REGISTER'S OFFICE
Forest County, Wis.
Received for record this 30 day
of January, A.D., 1984 at
8:30 o'clock A.M. and recorded
in Vol. of CORNER
page R-5 RESTORATIONS
Eugene Staszny
Register of Deeds



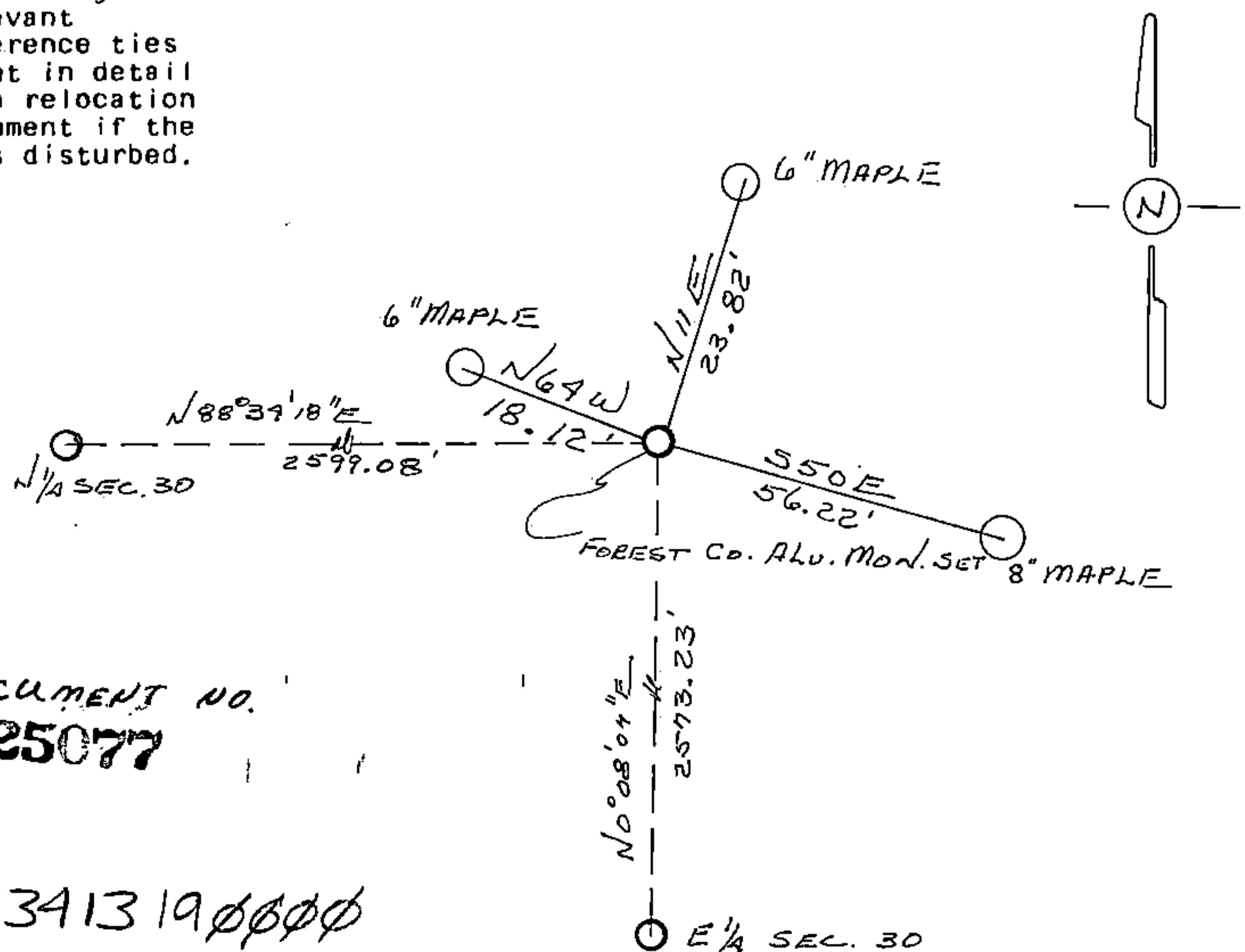
- (b) Describe any record evidence, monument evidence, occupational evidence, testimonial evidence or any other material evidence you considered, and whether the monument was found or placed.

Found $1\frac{1}{2}$ " well point. no other evidence found.

Replaced well point with Forest county Aluminum monument.

- (c) In the plan view drawing below, provide reference ties to at least 4 witness monuments, or, if the location is within a municipality, to at least 2 witness monuments. (Witness monuments shall be made of concrete, natural stone, iron or other equally durable material.) Describe witness monuments.

- (d) Show a plan view drawing depicting the relevant monuments and reference ties which is sufficient in detail to enable accurate relocation of the corner monument if the corner monument is disturbed. Indicate north.



DOCUMENT NO.
125077

43413190000

R-5

- (e) Describe any material discrepancy between the location of the corner as restored or reestablished and the location of that corner as previously restored or reestablished by distance and direction. Show the discrepancy on the plan view drawing under (d), above. Show the distances between the corner as previously restored or reestablished and (1) the corner as restored or reestablished, and (2) to at least 2 of the witness monuments shown on the drawing in (d), above.

NONE

- (f) Was the corner restored through acceptance of (1) an obliterated evidence location, or, (2) a found perpetuated location?

Found perpetuated location.

- (g&h) Was the corner reestablished through lost corner proportionate methods? If so, show the method, including the directions and distances to other public land survey corners used as evidence or used for proportioning in determining the corner location?

No

- (1) I, Thomas R. Arnott, Surveyor
(type or print name) certify that the corner location shown on this record was determined by me or under my direction and control and that this U.S. Public Land Survey Monument Record is correct and complete to the best of my knowledge and belief.

Thomas R. Arnott
Signature

27 June 89
Date

