

241604

NOV 08 2023

CORTNEY BRITTEN CLEEREMAN  
REGISTER OF DEEDS

U S PUBLIC LAND SURVEY MONUMENT RECORD - ADDENDUM

NOTE: This form is intended and designed to fulfill all requirements of Wisconsin Administrative Code, Chapter A-E 7.08 U.S. Public Land Survey Monument Record (3) (a-i)

A-E 7.08(3)(a) Identity of corner:  
SOUTH 1/4 CORNER SECTION 24,  
TOWNSHIP 34 NORTH,  
RANGE 13 EAST OF THE 4TH PM,  
TOWN OF NASHVILLE,  
COUNTY OF FOREST

WISCORS - FOREST COUNTY  
N: 511,176.926 USft (XXX,XXX.XXX)  
E: 859,055.542 USft (XXX,XXX.XXX)  
Datum: NAD83 (2011)  
GNSS Method RTK  
Base from GNSS Control set WISCORS VRS



The coordinate value shown has been verified by the average of two or more GPS observations at a markedly different time. Coordinates shown in parenthesis are previously published values.

A-E 7.08(3)(b)

Original Surveyor: James L. Nowlin

Date of Original Survey    Commenced:    October 3, 1865  
Completed:    October 18, 1865

Original Accessories:  
Hemlock    14    N 89° E    12 Links  
Hemlock    12    S 83° W    20 Links

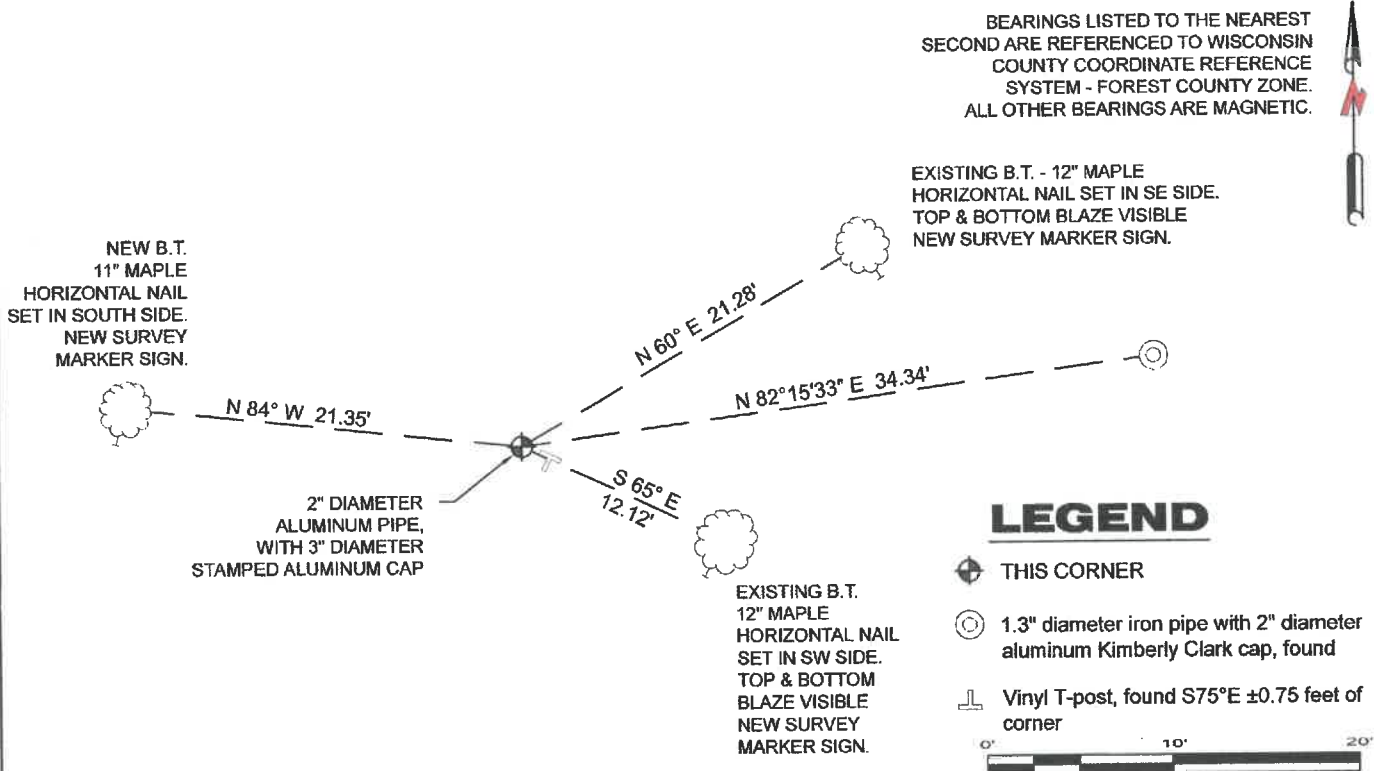
See previous Restoration of Lost Original Government Survey Corner dated August 25, 1964 - Index R 23 - Surveyor 463 - Neal Sperhake

Thence:

1998 - Surveyor 1682 - Glen Barker - Placed an aluminum near the Sperhake monument. I found no record of Barker's reasoning.

March 27, 2023 - I found a 2" diameter aluminum pipe monument with a 3" diameter aluminum cap, stamped to identify corner.  
I also found: 2 existing bearing trees (no record), and a 1.3" diameter iron pipe with a 4" diameter aluminum capped Kimberly Clark monument (Sperhake's monument).  
I placed new nails in the existing bearing trees, and established 2 new reference monuments as shown below.

A-E 7.08(3)(c)(d) Plan view of corner with references to at least 4 witness monuments.



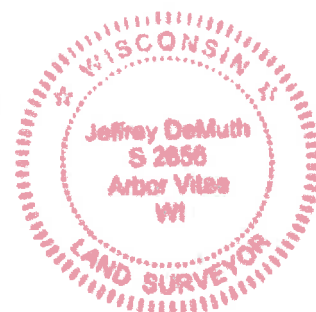
A-E 7.08(3)(e) 1865 Surveyor set a post, 1965 Surveyor set Kimberly Clark monument, 1998 Surveyor set an aluminum monument.  
2023 - I found a 2" diameter aluminum pipe with a 3" diameter aluminum cap stamped to identify corner.

A-E 7.08(3)(f) I accept this monument as a FOUND PERPETUATED LOCATION of the corner.  
A-E 7.08(3)(g)(h) I assume that this corner was determined through lost-corner-proportionate methods.

A-E 7.08(3)(i) I, Jeffrey L. DeMuth, Professional Land Surveyor No. S-2656, hereby certify that the corner location on this record was determined by me or under my direction and control, and that this U.S. Public Land Survey Monument Record is correct and complete to the best of my knowledge, and belief.

SIGNATURE

April 11, 2023  
DATE



4341324 0020

R23

State of Wisconsin

County of FOREST

ss. RESTORATION OF LOST ORIGINAL GOVERNMENT SURVEY CORNER.

I NEAL SPERHAKE, do hereby certify that on the THIRTY-FIRST day of OCTOBER, 1963, I established the SOUTH QUARTER SECTION CORNER OF SECTION 24, TOWNSHIP 34 NORTH, RANGE 13 EAST, Fourth Principal Meridian, as described hereon.

History: This corner was established during the original survey of this township, as noted in the original field notes for the original survey of T34N-R13E, 4th. p.m.

Description of monument and accessories I established to perpetuate the location of this corner:

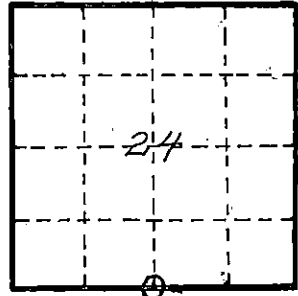
At the point determined for the location of the corner I emplaced a:

GALVANIZED IRON PIPE, THREE FEET LONG, ONE INCH IN DIAMETER, WITH ALUMINUM CAP DENOTED AS, "KIMBERLY-CLARK CORP. T34N 1/4 BTWN. 24 & 25 R13E SPERHAKE RLS 463 10/31/63."

The pipe is witnessed by:

Maple 6 S 21°W 3 1/2 links. (SCRIBED 1/4 S 25 NBT).  
Elm 7 N 87°E 83 links. (SCRIBED 1/4 S 24 NBT).

Description as to how corner was located: No evidence of original corner present. Thus, set by proportionate measurement. The section corners 1/2 mile east and west have been previously established with a distance of 79.07 chains between them. Thus, set the quarter corner 39.53 1/2 chains from either corner and on a straight line between them.



O = Corner monument restored

Subscribed & sworn to before me this 25 day of Aug 1964  
Anna Peterson  
NOTARY PUBLIC, FOREST CO., WIS  
COM. EXPIRES 10/31/65

88983

Resident witnesses \_\_\_\_\_

Dated at Crandon, Wisconsin, this 25 day of Aug, 1964.

Signature Neal Sperhake

Title Registered Land Surveyor Registration No. 463

Office of Reg. of Deeds County of Forest

I hereby certify that the within instrument was filed in this office for record on the 25 day of Aug 1964, and was filed in Book No. \_\_\_\_\_ Page No. \_\_\_\_\_ of County Records.

Surveyor's Seal

Signature Anna Peterson Title Reg. of Deeds

4341324 2020

Index No. P-23  
R23