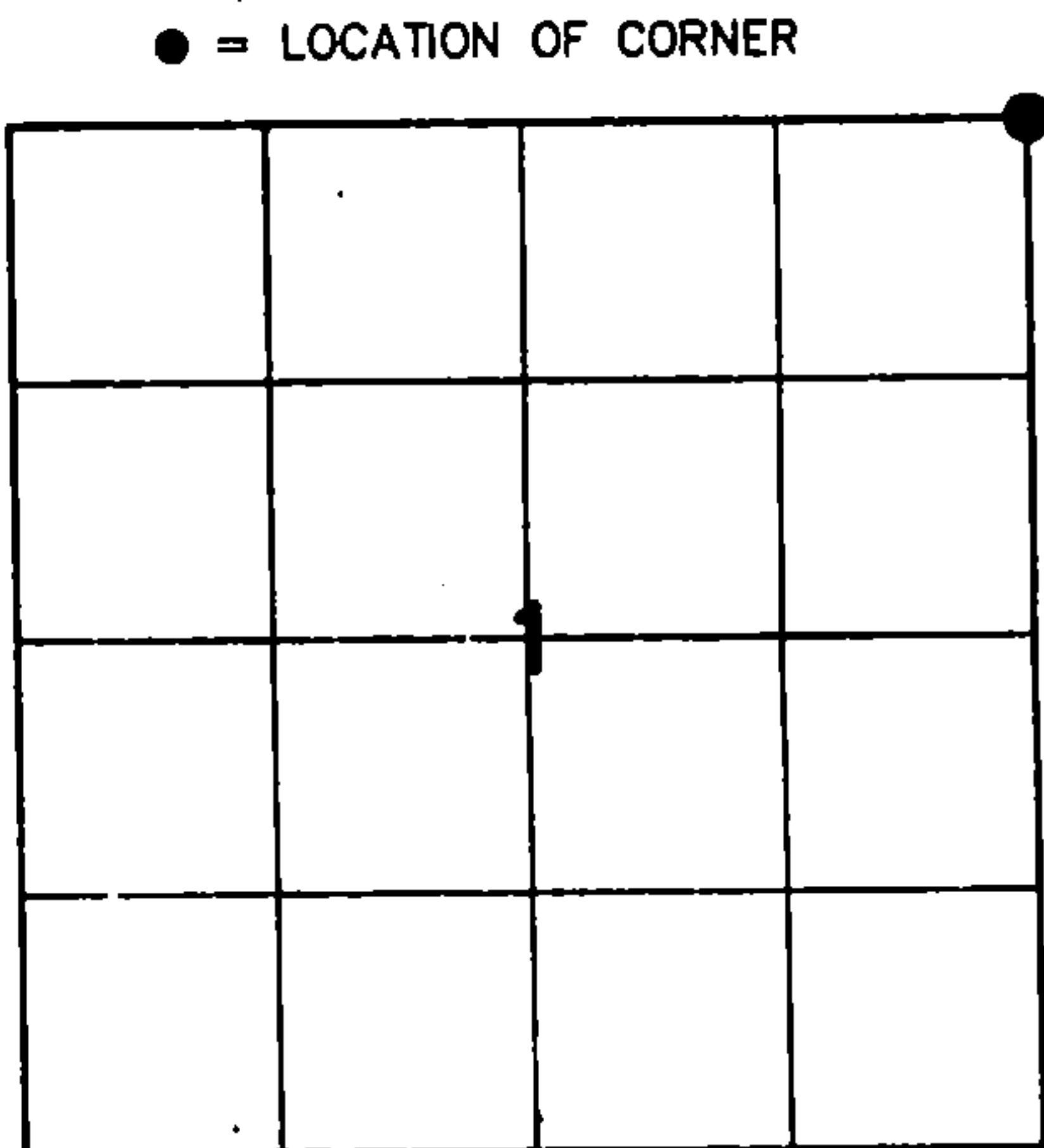


U.S. PUBLIC LAND SURVEY MONUMENT RECORD

HISTORY OF ORIGINAL CORNER ESTABLISHMENT AND SUBSEQUENT RESTORATION AND DESCRIPTION OF ANY RECORD, MONUMENT OCCUPATIONAL, TESTIMONIAL OR OTHER EVIDENCE CONSIDERED:

THE ORIGINAL CORNER WAS SET BY ALFRED MILLARD WITH THE ORIGINAL BEARING TREES OF:
12" YEL BIRCH - N70°W 11 LINKS
14" WHITE PINE - S62°W 15 LINKS
10" YEL BIRCH - S71°E 23 LINKS
11" YEL BIRCH - N28°E 53 LINKS
1983 - MILO STEFAN FOUND THE CORNER MARKED WITH A 4" LANGLADE CO MONUMENT.

I FOUND THE 4" LANGLADE COUNTY MONUMENT AND MANY OF STEFANS BEARING TREES. I SET 3/4" X 30" REBAR FOR NEW TIES.

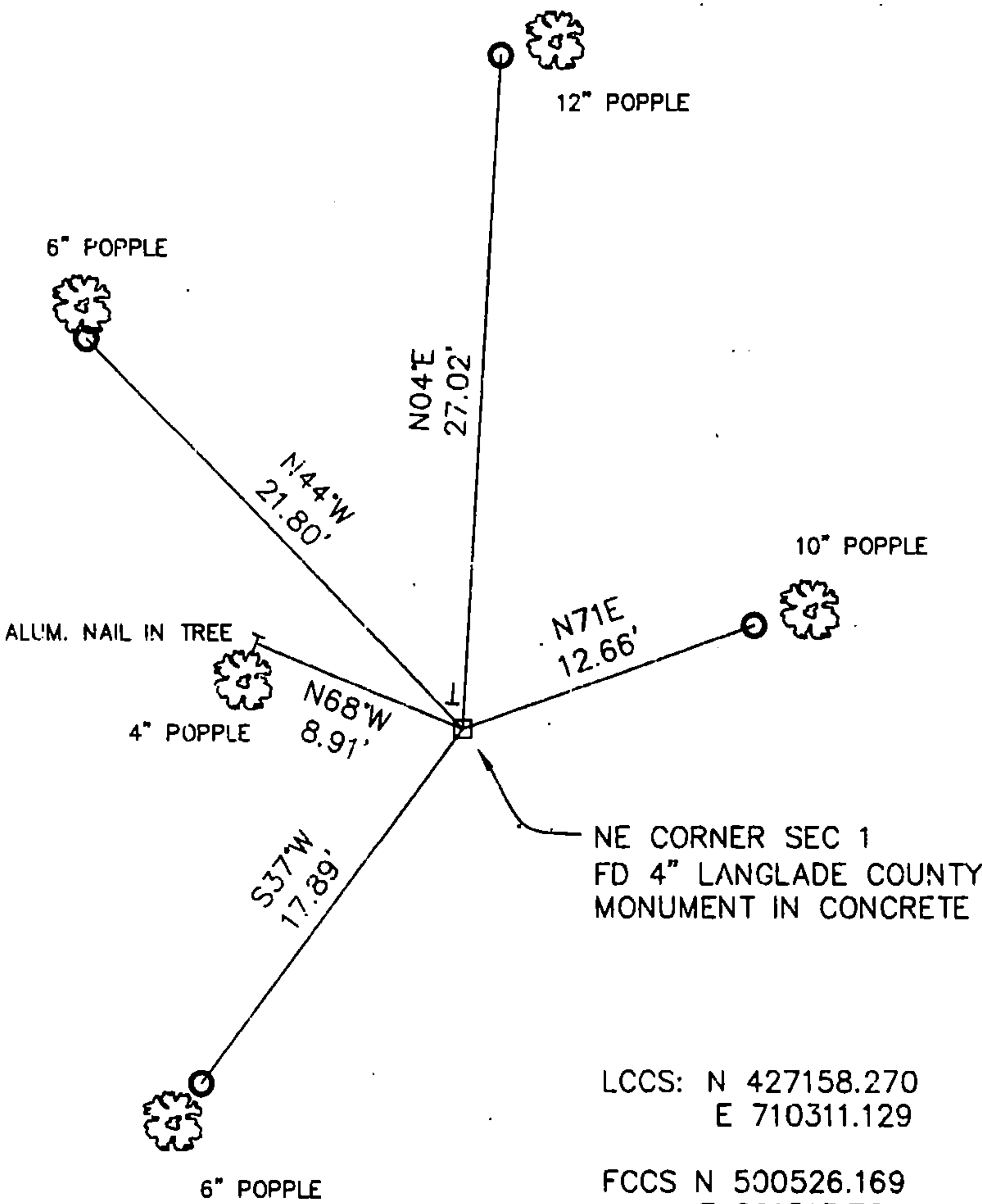


SECTION 1
TOWNSHIP 33 NORTH, RANGE 13 EAST
TOWN OF LANGLADE
LANGLADE COUNTY, WISCONSIN

CORNER WAS: (CHECK ALL THAT APPLY)

- ☐ RESTORED THROUGH ACCEPTANCE OF AN OBLITERATED EVIDENCE LOCATION
- ☒ RESTORED THROUGH ACCEPTANCE OF A FOUND PERPETUATED LOCATION
- ☐ CONSIDERED A LOST CORNER AND REESTABLISHED THROUGH LOST CORNER PROPORTIONATE METHODS (INCLUDE A PLAN VIEW DRAWING SHOWING DISTANCES AND DIRECTIONS TO OTHER PUBLIC LAND SURVEY CORNERS USED FOR PROPORTIONING AND DETERMINING THE CORNER LOCATION)
- ☐ RESTORED OR REESTABLISHED IN A LOCATION THAT DIFFERS FROM A PREVIOUS RESTORATION OR RE-ESTABLISHMENT (INCLUDE A PLAN VIEW DRAWING AND INDICATE WHAT WAS SET AND/OR FOUND)
- ☐ CHECK IF THERE IS ADDITIONAL INFORMATION ON BACK

DESCRIBE THE MONUMENT AND ACCESSORIES USED TO PERPETUATE THE LOCATION OF THE CORNER. (INCLUDE A PLAN VIEW DRAWING AND INDICATE WHAT WAS SET AND/OR FOUND) ALSO INCLUDE FOUR TIES TO THE SECTION CORNER AND DESCRIPTION OF THE TIES.



- SET 3/4"X 30" IRON REBAR AT ALL TIE LOCATIONS
- BEARINGS REFERENCED TO MAGNETIC
- T - WHITE VINYL POST SET
- TREES SHOWN HAVE BEARING TREE SIGNS NAILED TO FACE

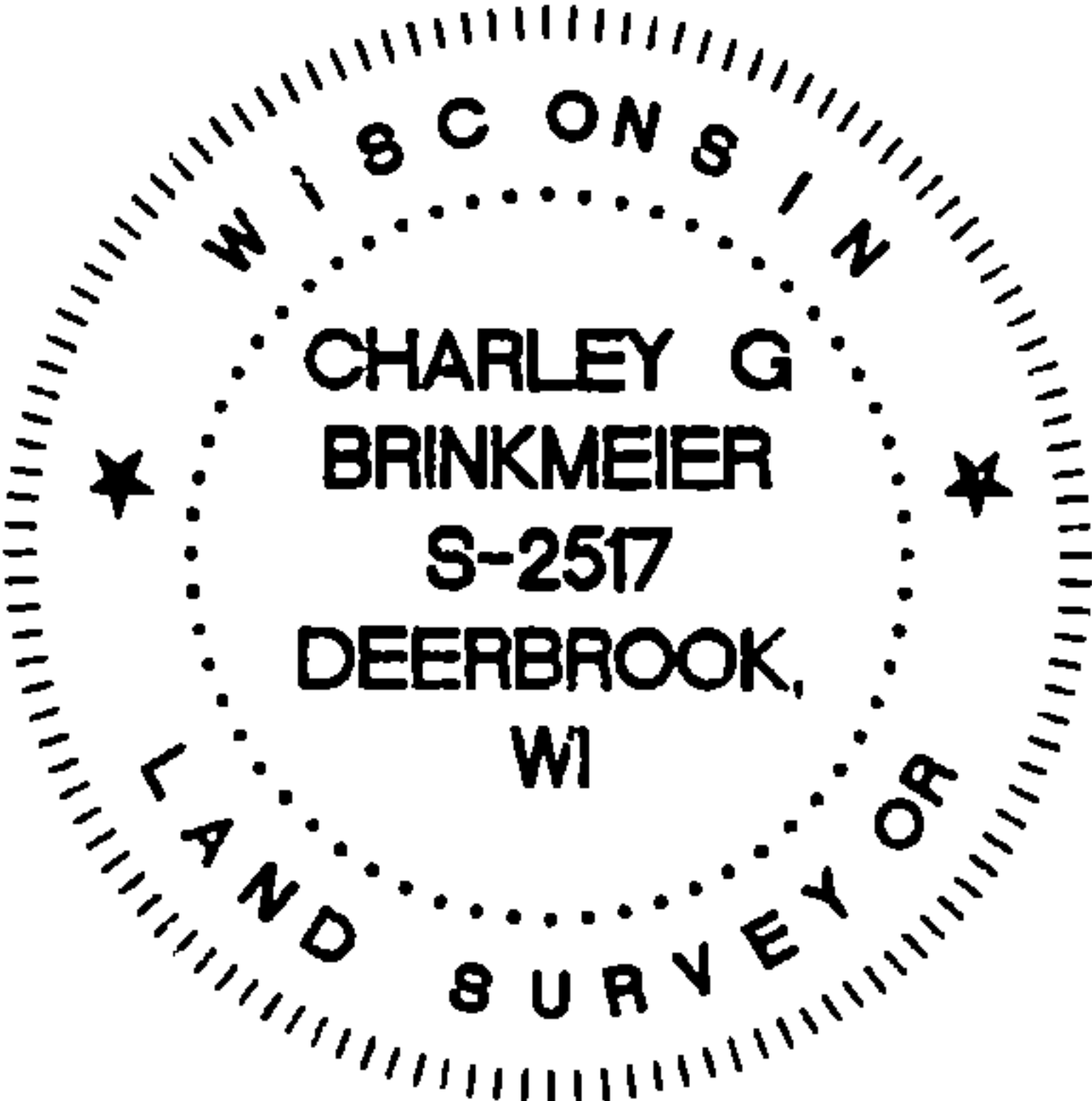
FOREST COUNTY, WI
CORTNEY BRITTEN CLEEREMAN
REGISTER OF DEEDS
RECEIVED FOR RECORD

APR 27 2018

Time: 10:00 A.M.
Vol.: Corner Restoration
Page Number: 2-25

CHARLEY G. BRINKMEIER
(type or print name) CERTIFY THAT THE CORNER LOCATION SHOWN ON THIS RECORD WAS DETERMINED BY ME OR UNDER MY DIRECTION AND CONTROL AND THAT THIS U.S. PUBLIC LAND SURVEY MONUMENT RECORD IS CORRECT AND COMPLETE TO THE BEST OF MY KNOWLEDGE AND BELIEF.

SIGNATURE Charley G. Brinkmeier DATE 1-17-17



U. S. PUBLIC LAND SURVEY MONUMENT RECORD

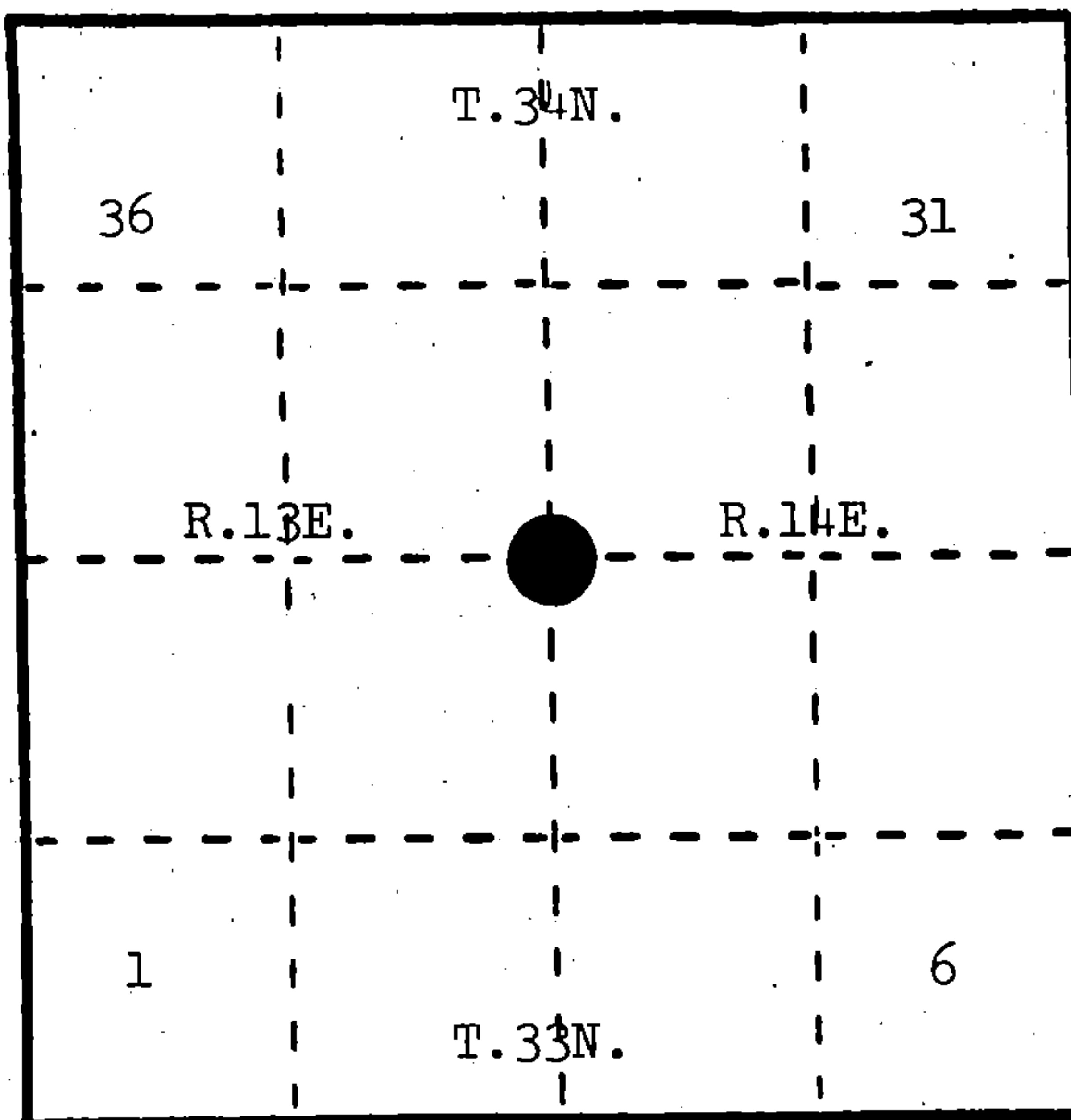
INSTRUCTIONS: This record shall show the location of the corner and shall include all of the following nine elements (a. through i).

- (a) Identify the corner by reference to the U.S. public land survey system.

○ = Corner monument restored.

Township corner to T.33-34N., R.13-14E.

REGISTER'S OFFICE
Forest County, Wis.
Received for record this 15th day
of April A.D., 1985 at
3:10 o'clock P.M. and recorded
in Vol. CORNER RESTORATIONS
page 21
Paul Aschenbrenner
Register of Deeds



- (b) Describe any record evidence, monument evidence, occupational evidence, testimonial evidence or any other material evidence you considered, and whether the monument was found or placed.

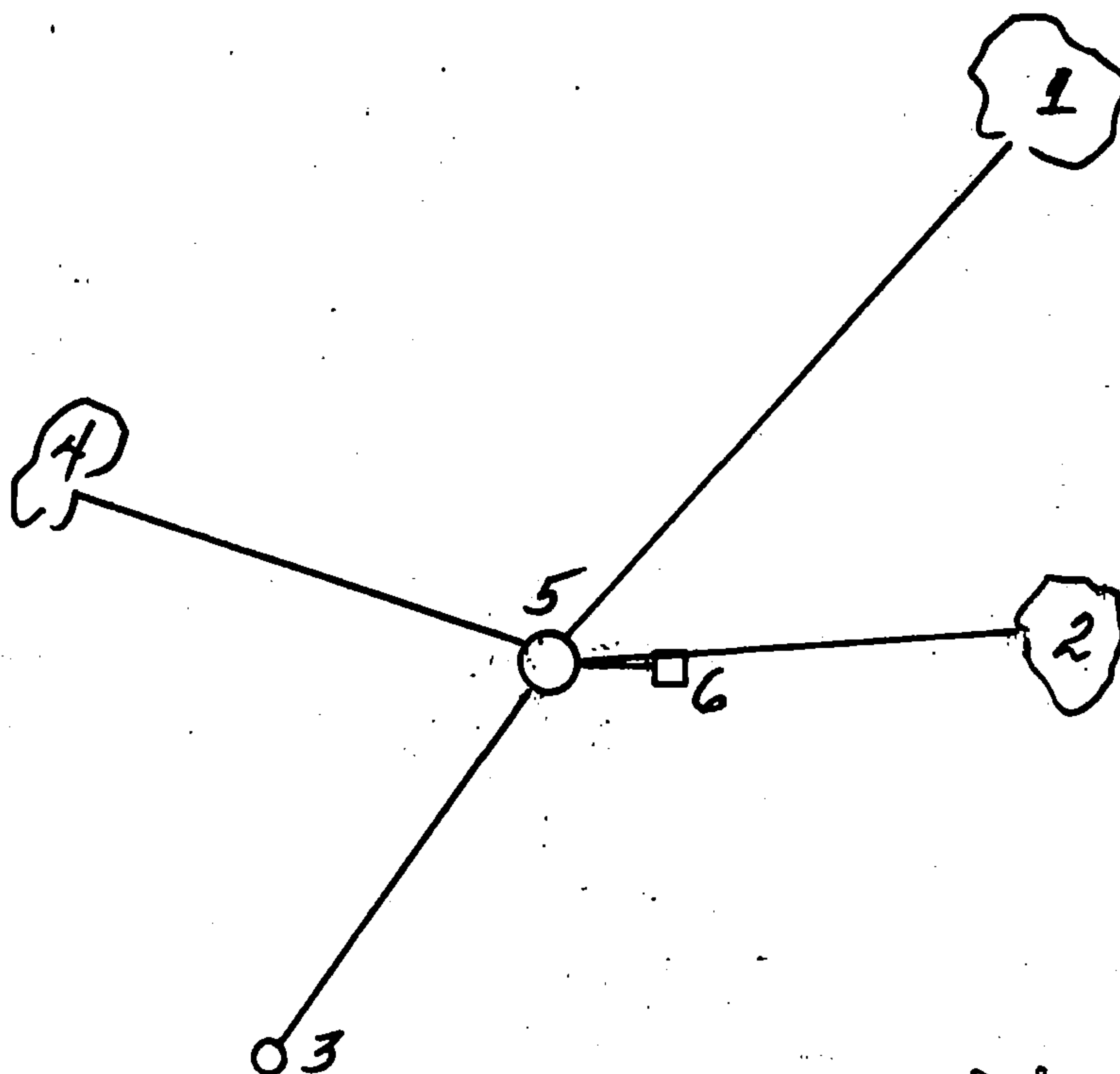
June, 1857, Alfred Millard set post for township corner and made the following BTs: Yellow Birch, 12", N.70°W., 11 links; White Pine, 14", S.62°W., 15 links; Yellow Birch, 10", S.71°E., 23 links; Yellow Birch, 11", N.28°E., 53 links.

1983, Milo Stefan found corner position marked by a 4" Langlade County monument, from which the remains of the original bearing trees were recovered.

- (c) In the plan view drawing below, provide reference ties to at least 4 witness monuments, or, if the location is within a municipality, to at least 2 witness monuments. (Witness monuments shall be made of concrete, natural stone, iron or other equally durable material.) Describe witness monuments.

- (d) Show a plan view drawing depicting the relevant monuments and reference ties which is sufficient in detail to enable accurate relocation of the corner monument if the corner monument is disturbed. Indicate north.

1. White Spruce, 14", N.39°E., 123.26 feet
2. White Spruce, 8", N.87°E., 76.80 feet
3. Power Pole #3313-1E1, S.33°W., 63.41 feet
4. Red Maple, 6", N.83°W., 70.98 feet
5. Langlade County Monument
6. Steel Sign Post, East, 2.05'



(e) Describe any material discrepancy between the location of the corner as restored or reestablished and the location of that corner as previously restored or reestablished by distance and direction. Show the discrepancy on the plan view drawing under (d), above. Show the distances between the corner as previously restored or reestablished and (1) the corner as restored or reestablished, and (2) to at least 2 of the witness monuments shown on the drawing in (d), above.

(f) Was the corner restored through acceptance of (1) an obliterated evidence location, or, (2) a found perpetuated location?

(2) a found perpetuated location.

(g&h) Was the corner reestablished through lost corner proportionate methods? If so, show the method, including the directions and distances to other public land survey corners used as evidence or used for proportioning in determining the corner location?

Milo E. Stefan

(i) I, Milo E. Stefan
(type or print name) certify that the corner location shown on this record was determined by me or under my direction and control and that this U.S. Public Land Survey Monument Record is correct and complete to the best of my knowledge and belief.

Milo E. Stefan
Signature

2/19/85
Date

Affix Land Surveyor Seal

