

Document Number

195324

REGISTER'S OFFICE
Forest County, Wis.

Received for record this 29th day
of August A.D., 2007 at
2:09 clock P.M. and recorded
in Vol. Corner Restoration
page J-19

Kay Swanson, Deputy
Register of Deeds

U.S. PUBLIC LAND SURVEY MONUMENT RECORD

(As Required by WI Adm. Code)

History of original corner establishment and subsequent restorations and descriptions of any record, monument, occupational, testimonial or other evidence considered:

1859 - James McBride, set quarter post and made the following B.T.'s:

Fir, 12", N 19° E, 44 lks., 29.04 feet.
Birch, 10", S 26° W, 30 lks., 19.80 feet.

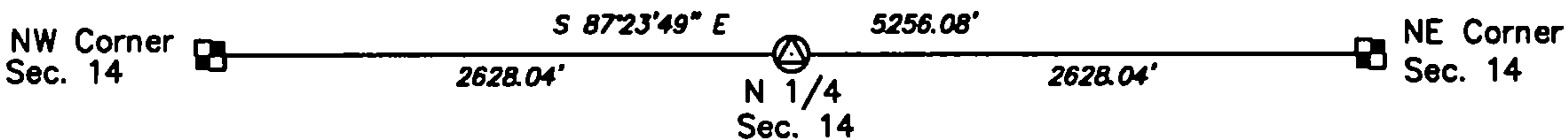
2007 - I found no evidence of the original corner or accessories.

I set 1/4 corner midpoint and on line between the NW and NE corners of Section 14.

Corner was: (Check All That Apply)

- ☐ Restored through acceptance of an obliterated evidence location.
☐ Restored through acceptance of a found perpetuated location.
☒ Considered a lost corner and reestablished through lost corner proportionate methods (include a plan view drawing showing distances and directions to other Public Land Survey Corners used for proportioning and determining the corner location).
☐ Restored or reestablished in a location that differs from a previous restoration or reestablishment (include a plan view drawing and indicate what was set and/or found).

Describe the monument and accessories used to perpetuate the location of this corner (include a plan view drawing and indicate what was set and/or found).

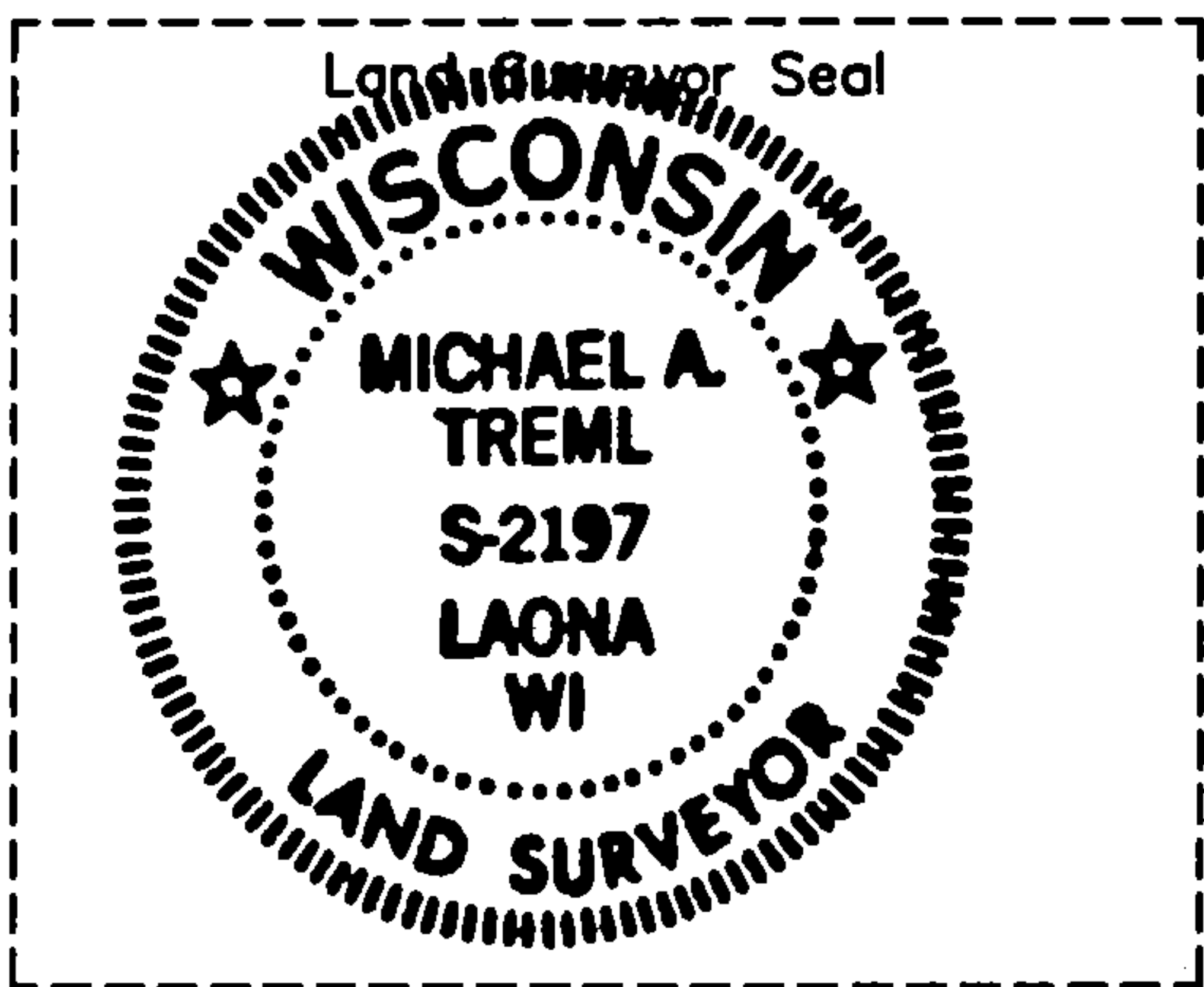
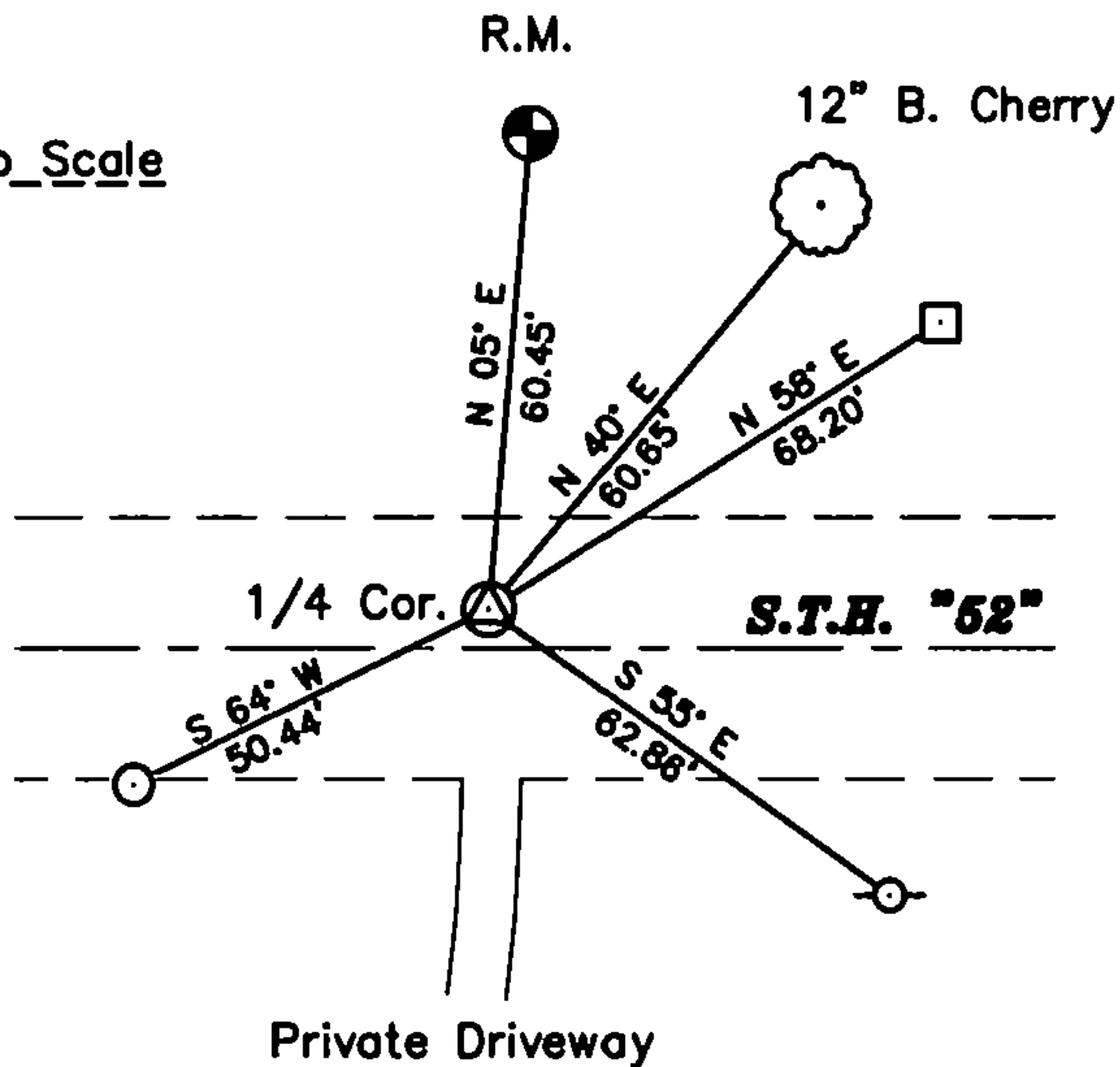


LEGEND:

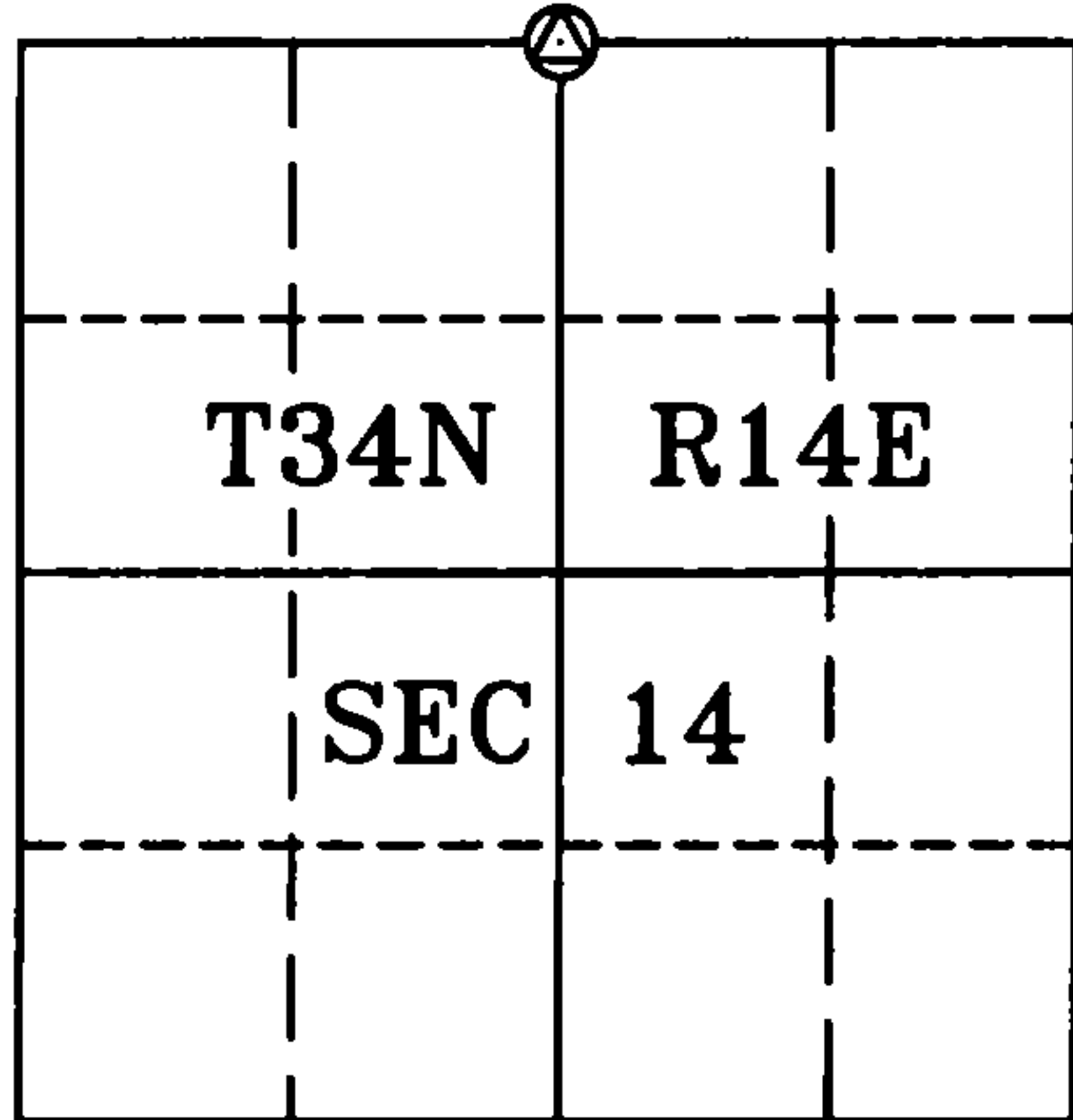
- ☒ Existing Monument of Record
☒ North 1/4 Corner PK Nail Set
☒ 2"x 30" Forest County Aluminum Pipe Reference Monument Set
☐ Existing 4" x 4" wood plantation post
☐ Existing Utility Pole #3414-14w8 measured to PK nail in side
☐ 1" x 30" Iron Pipe Set

Note: Distances are taken to nail in side of tree.

Sketch Not To Scale



ASSUMED



I, Michael A. Tremi, RLS
(type or print name) certify that the corner location shown on this record was determined by me or under my direction and control and that this U.S. Public Land Survey Monument Record is correct and complete to the best of my knowledge and belief.

Michael A. Tremi 8/2/07
Signature Date

The North 1/4 corner of
Section 14 T. 34 N., R. 14 E.
Forest County, WI

Index No. J-19

2007

43414110020

J-19