

U. S. PUBLIC LAND SURVEY MONUMENT RECORD

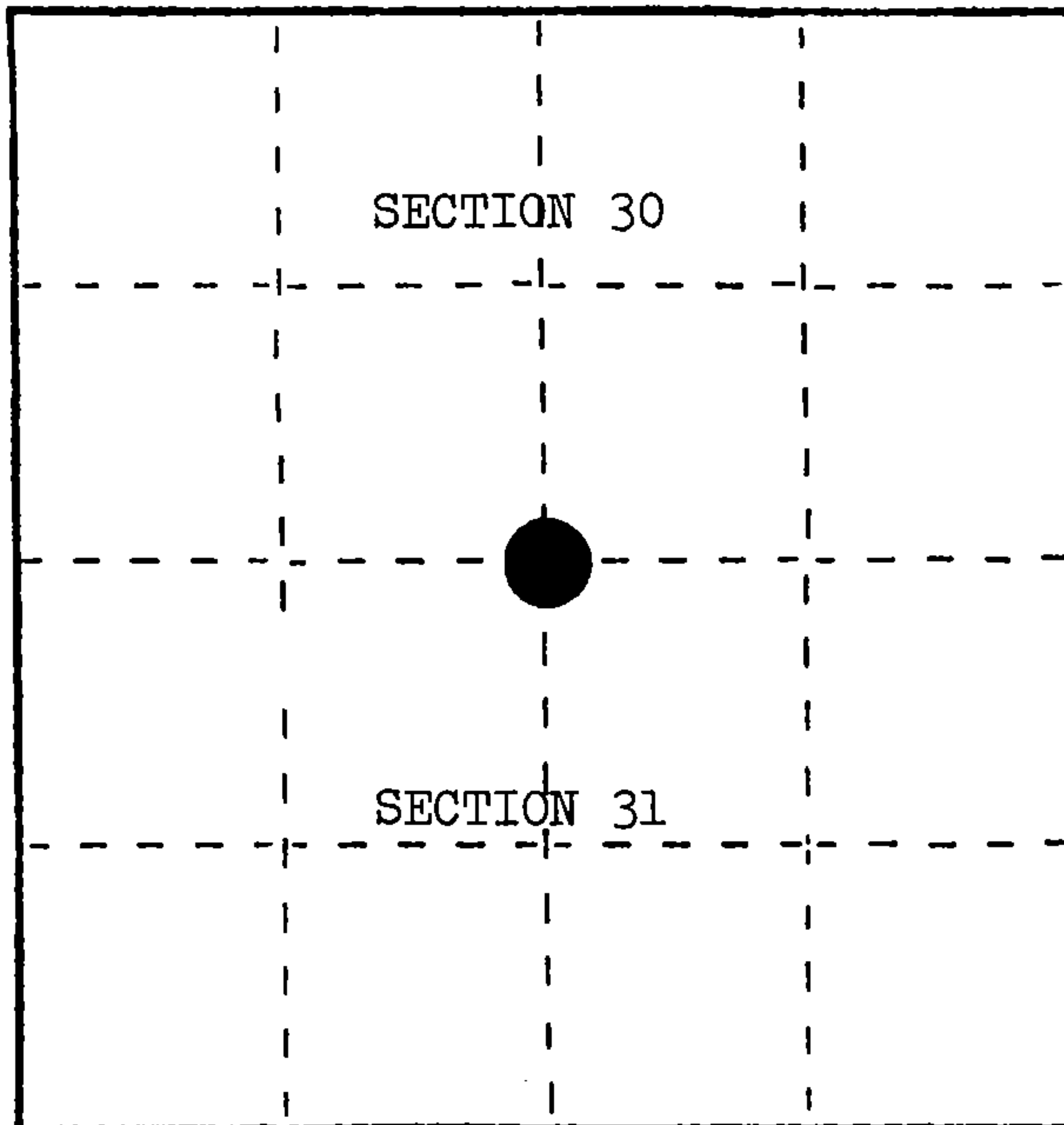
INSTRUCTIONS:

This record shall show the location of the corner and shall include all of the following nine elements (a through i).

- (a) Identify the corner by reference to the U.S. public land survey system.

○ = Corner monument restored.

Quarter corner to Sections 30 and 31, T.34N., R.14E.



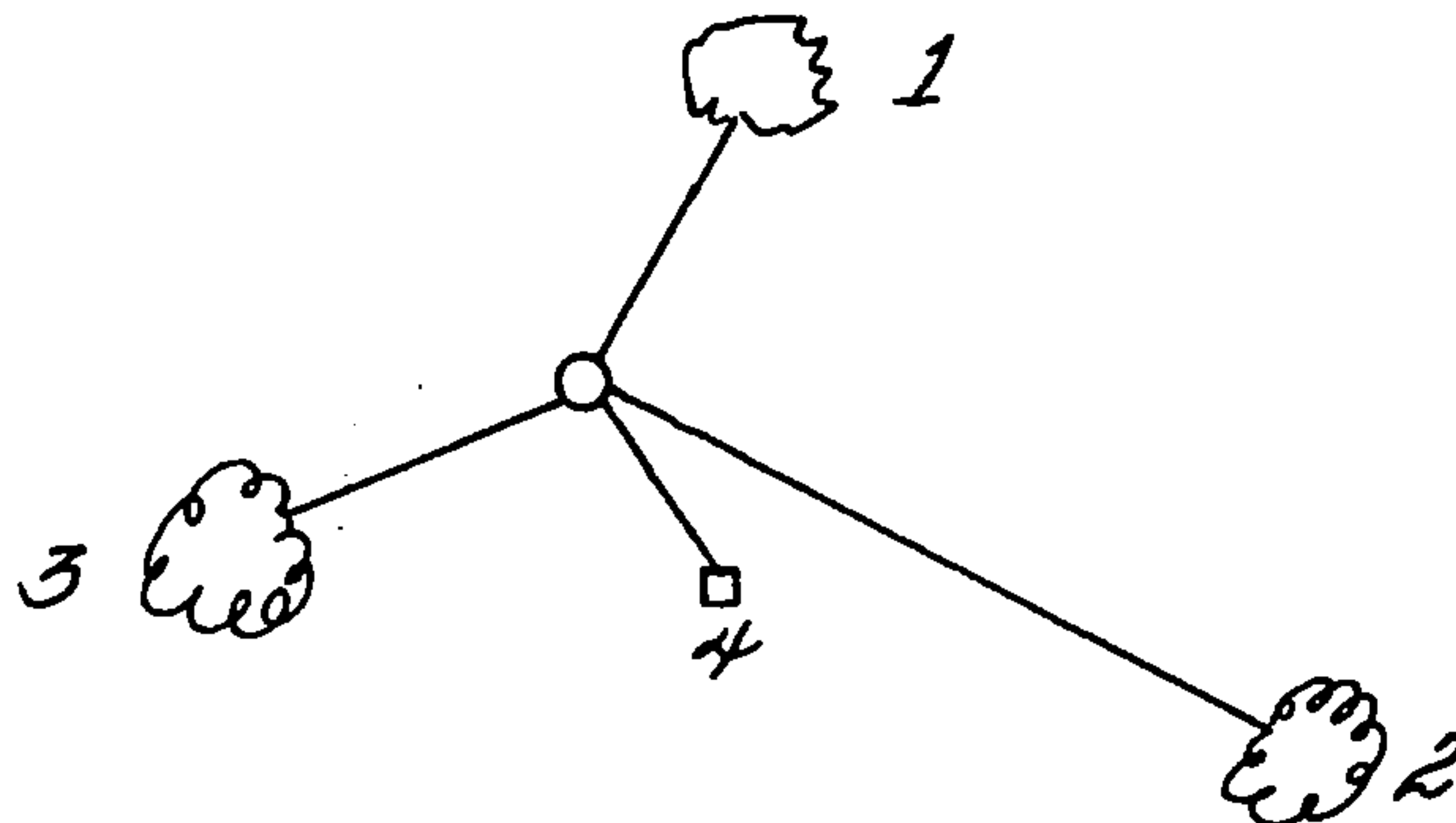
- (b) Describe any record evidence, monument evidence, occupational evidence, testimonial evidence or any other material evidence you considered, and whether the monument was found or placed.

Monument was placed by lost methods.

- (c) In the plan view drawing below, provide reference ties to at least 4 witness monuments, or, if the location is within a municipality, to at least 2 witness monuments. (Witness monuments shall be made of concrete, natural stone, iron or other equally durable material.)
Describe witness monuments.

- (d) Show a plan view drawing depicting the relevant monuments and reference ties which is sufficient in detail to enable accurate relocation of the corner monument if the corner monument is disturbed. Indicate north.

1. White Spruce, 3", N.12°E., 4.97 feet
2. White Spruce, 4", S.67°E., 19.36 feet
3. White Spruce, 4", S.79°W., 3.60 feet
4. Steel Sign Post, Southwest, 3.70 feet



REGISTER'S OFFICE }
Forest County, Wis. }

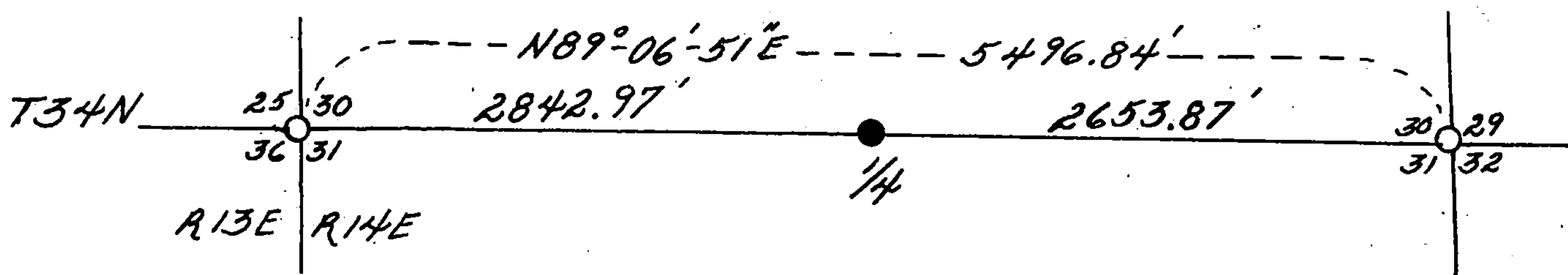
Received for record this.....day
of.....A. D., 1985 at
...o'clock.....M. and

recorded in Vol. **CORNER RESTORATIONS**

on page **V-3**
Paul Aschenbrenner
REGISTER

- (f). Was the corner restored through acceptance of (1) an obliterated evidence location, or, (2) a found perpetuated location?

- Corner restored by lost methods, single proportionate measure.



- Milo E. Stefan
Signature

3721184
Date