

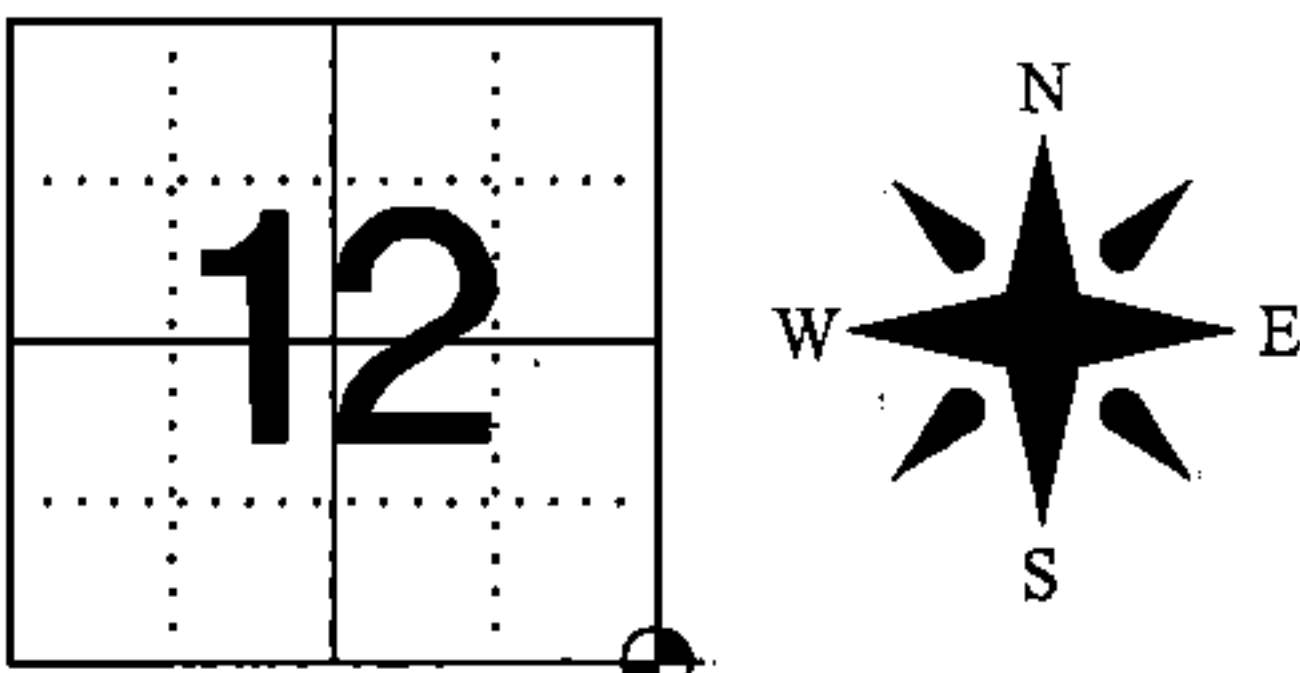
Document Number
209970

REGISTER'S OFFICE
Forest County, Wis.
Received for record this 17th day
of September A.D., 2012 at
9:00 o'clock A.M. and recorded
in Vol. CORNER RESTORATION
page 125
Cathy Mosinee, Wis.
Register of Deeds

U.S. PUBLIC LAND SURVEY MONUMENT RECORD
FOREST COUNTY, WISCONSIN

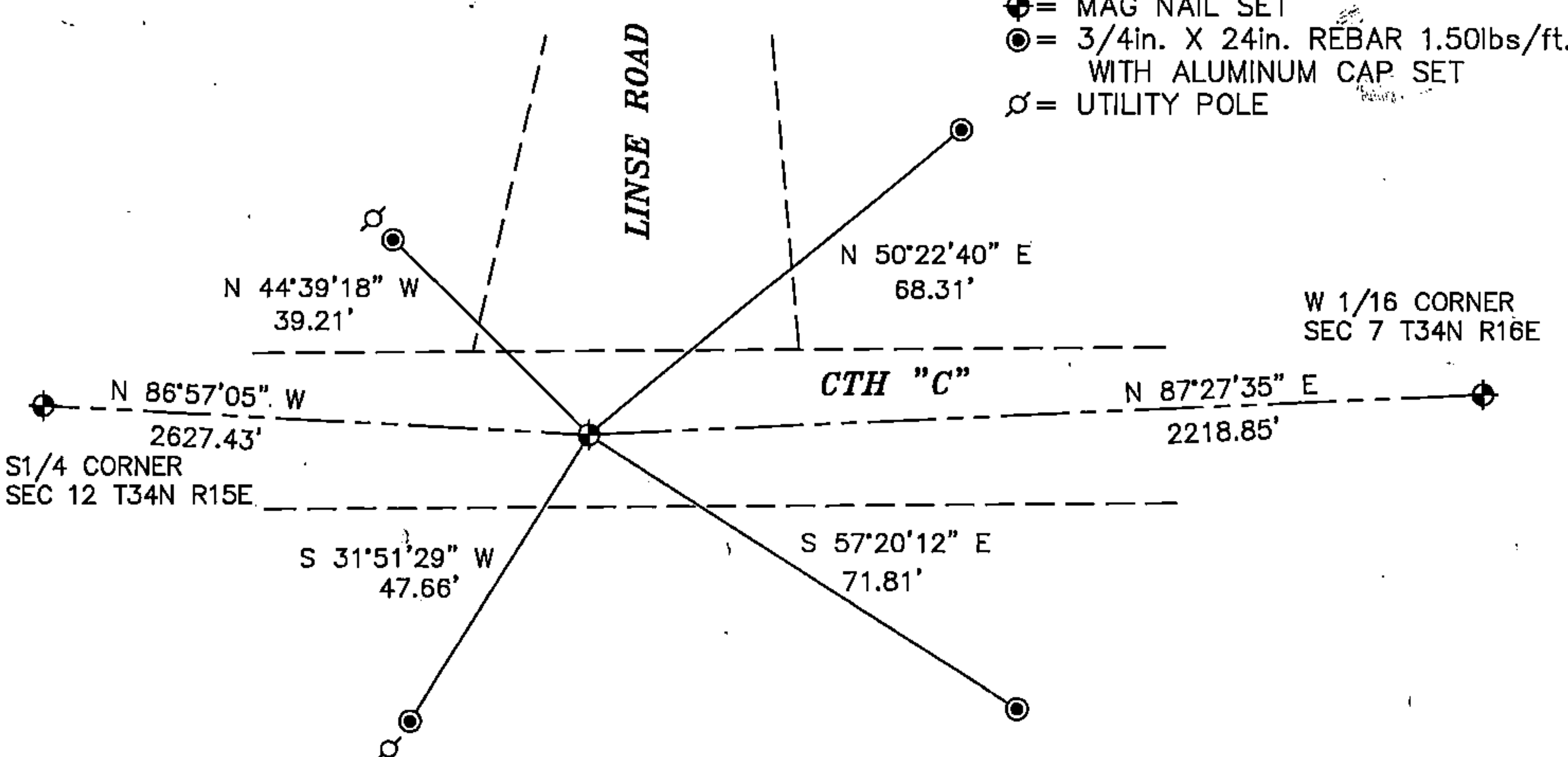
IN ACCORDANCE WITH WISCONSIN ADMINISTRATIVE CODE, CHAPTER A-E 7.08 (3) (A)-(I)

LOCATION: CHAPTER A-E 7.08 (3): (A)
SECTION 12 TOWNSHIP 34 NORTH RANGE 15 EAST
TYPE OF CORNER: SOUTHEAST SECTION CORNER
TYPE OF MONUMENT: MAG NAIL OVER 3/4in. REBAR
WITH ALUMINUM CAP
HORIZONTAL DATUM: NAD 83(2007) GRID
FOREST COUNTY COORDINATES
NORTHING: 521109.585
EASTING: 925653.044



RECOVERY PROCEDURES: CHAPTER A-E 7.08 (3): (B), (F), (G), (H)
1993: PLAT OF SURVEY BY RLS 1651 CALLS FOR A RAILROAD SPIKE AT CORNER AND STATES:
CORNER RECOVERED AS SET BY MILO STEFAN (RLS). CERTIFICATE ON FILE IN FOREST COUNTY,
7 JUNE 2012: FOUND CALLED FOR RAILROAD SPIKE AND RECORDED LOCATION IN PREPRATION OF CTH
"C" RESURFACE PROJECT
30 JULY 2012: SET 3/4in. X 24in. REBAR WITH ALUMINUM CAP IN ROAD BASE AND THEN SET A MAG
NAIL OVER REBAR IN BITUMINOUS SURFACE AFTER COMPLETION OF CTH "C" RESURFACE PROJECT

PLAN VIEW: CHAPTER A-E 7.08 (3): (C), (D), (E),



SURVEYOR'S CERTIFICATE: CHAPTER 7.08 (3): (I)

THE UNDERSIGNED HEREBY CERTIFIES THAT THE U.S. PUBLIC LAND
SURVEY MONUMENT RECORD IS CORRECT AND COMPLETE TO THE BEST
OF MY KNOWLEDGE AND BELIEF.



Darren B. Krzanowski
DARREN B. KRZANOWSKI
WISCONSIN LAND SURVEYOR S-2663
DATED THIS 2nd DAY OF AUGUST 2012

43415120000

125