

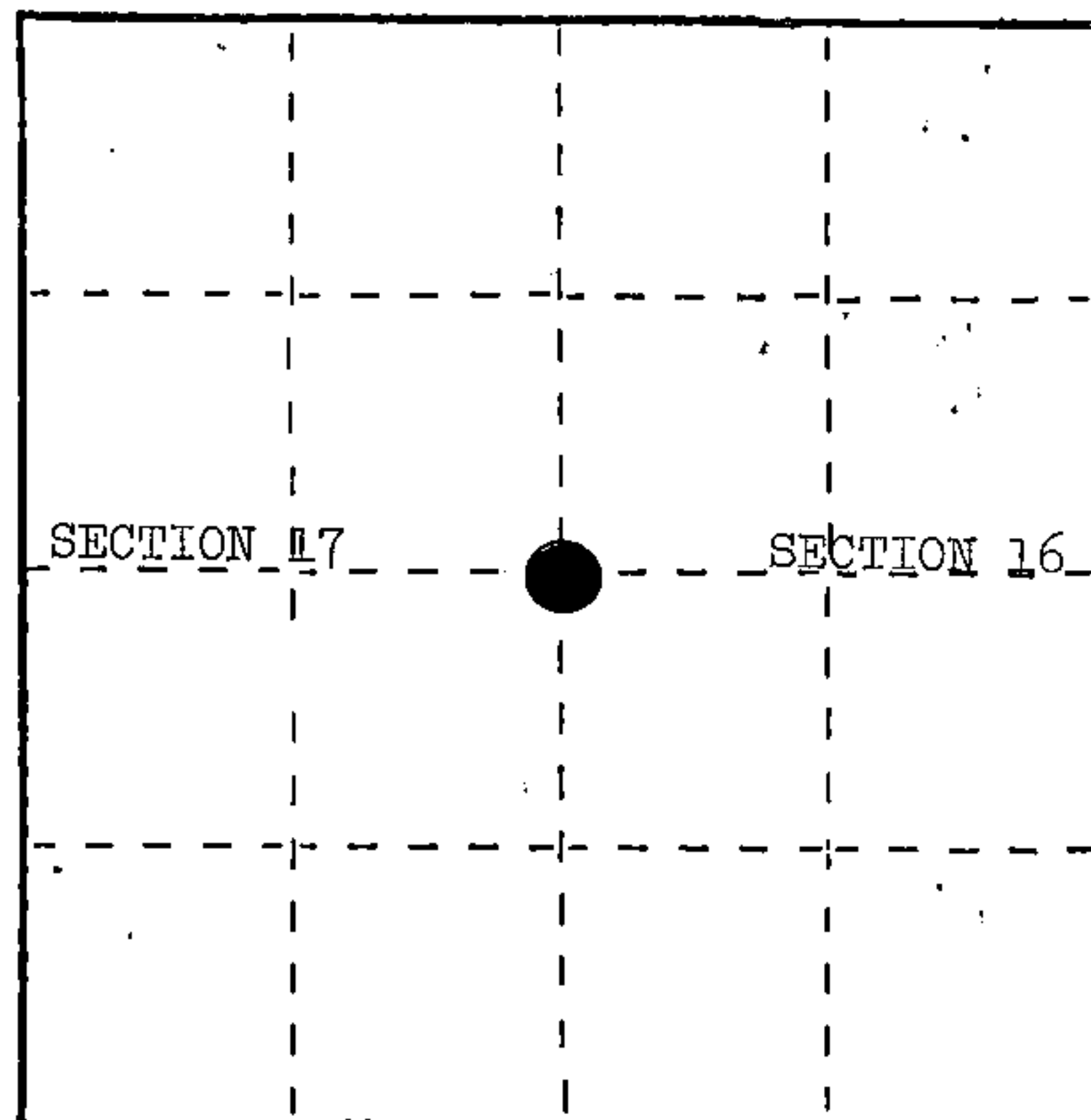
## U. S. PUBLIC LAND SURVEY MONUMENT RECORD

INSTRUCTIONS: This record shall show the location of the corner and shall include all of the following nine elements (a through i).

- (a) Identify the corner by reference to the U.S. public land survey system.

○ = Corner monument restored.

Quarter corner to Sections 16 and 17, T.34N., R.15E., Forest County, Wisconsin.



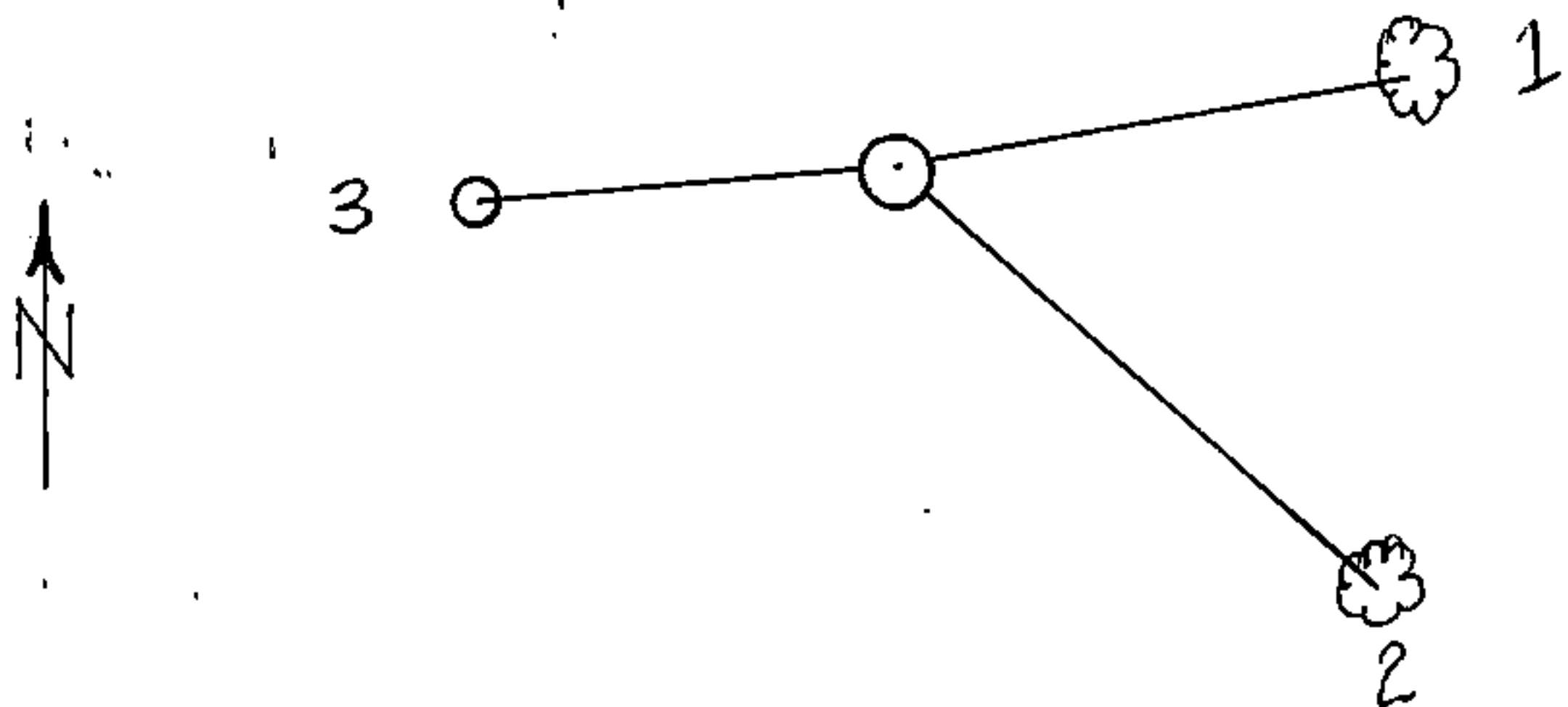
- (b) Describe any record evidence, monument evidence, occupational evidence, testimonial evidence or any other material evidence you considered, and whether the monument was found or placed.

Corner position falls in abandoned Hwy. "32"--all original evidence destroyed. In 1906, Nathan Smith found original BTs standing and ran north to set N 1/16. We restored this corner by extending the line from section corner north through N 1/16 and doubled the distance. This position fits well with fence line west and the call on 1916 railroad right-of-way plat, marked with a 2" x 30" aluminum monument.

- (c) In the plan view drawing below, provide reference ties to at least 4 witness monuments, or, if the location is within a municipality, to at least 2 witness monuments. (Witness monuments shall be made of concrete, natural stone, iron or other equally durable material.) Describe witness monuments.

- (d) Show a plan view drawing depicting the relevant monuments and reference ties which is sufficient in detail to enable accurate relocation of the corner monument if the corner monument is disturbed. Indicate north.

1. Red Maple, 6", N.73°E., 58.46 feet
2. Balsam, 8", S.56°E., 73.37 feet
3. Power Pole #3415-17E7, S.85°W., 27.22 feet



REGISTER'S OFFICE }  
Forest County, Wis. }

Received for record this 11th day

of January, A.D., 1985 at

1:00 o'clock P.M. and

recorded in Vol. CORNER RESTORATIONS

on page 9

Paul Aschenbrenner  
REGISTER

T 34- R 15

43415172000

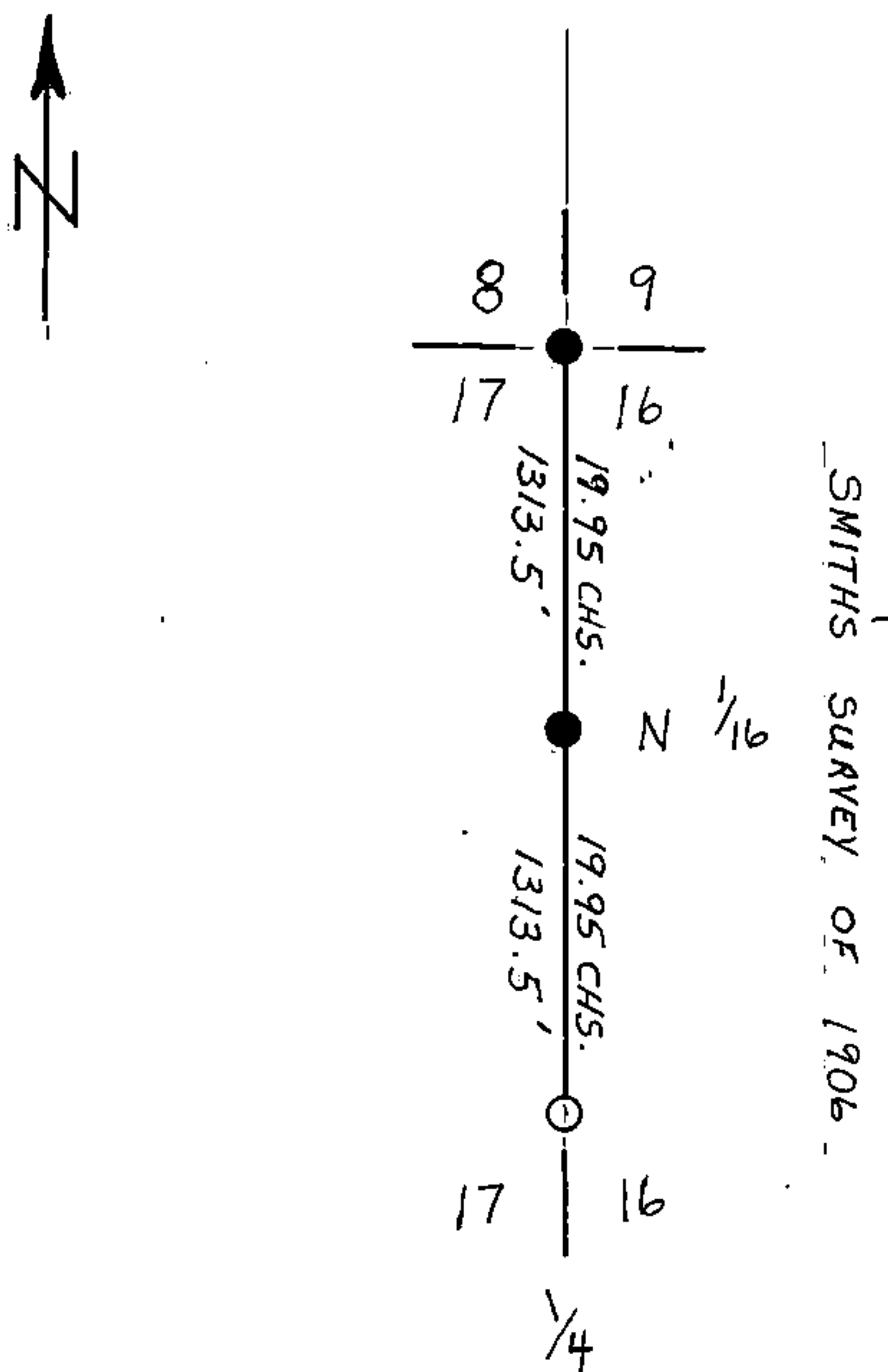
(e) Describe any material discrepancy between the location of the corner as restored or reestablished and the location of that corner as previously restored or reestablished by distance and direction. Show the discrepancy on the plan view drawing under (d), above. Show the distances between the corner as previously restored or reestablished and (1) the corner as restored or reestablished, and (2) to at least 2 of the witness monuments shown on the drawing in (d), above.

None.

(f) Was the corner restored through acceptance of (1) an obliterated evidence location, or, (2) a found perpetuated location?

Obliterated evidence.

(g&h) Was the corner reestablished through lost corner proportionate methods? If so, show the method, including the directions and distances to other public land survey corners used as evidence or used for proportioning in determining the corner location?



(1) I, Milo E. Stefan  
(Type or print name) certify that the corner location shown on this record was determined by me or under my direction and control and that this U.S. Public Land Survey Monument Record is correct and complete to the best of my knowledge and belief.

Milo E. Stefan  
Signature

12/24/84  
Date