

Document Number

189256

REGISTER'S OFFICE
Forest County, Wis.
Received for record this 15th day
of November A.D., 2005 at
10:45 o'clock A M., and recorded
in Vol. Corner Restoration
page N-21
Kay Swanson, Deputy
Register of Deeds

U.S. PUBLIC LAND SURVEY MONUMENT RECORD
(As Required by WI Adm. Code)

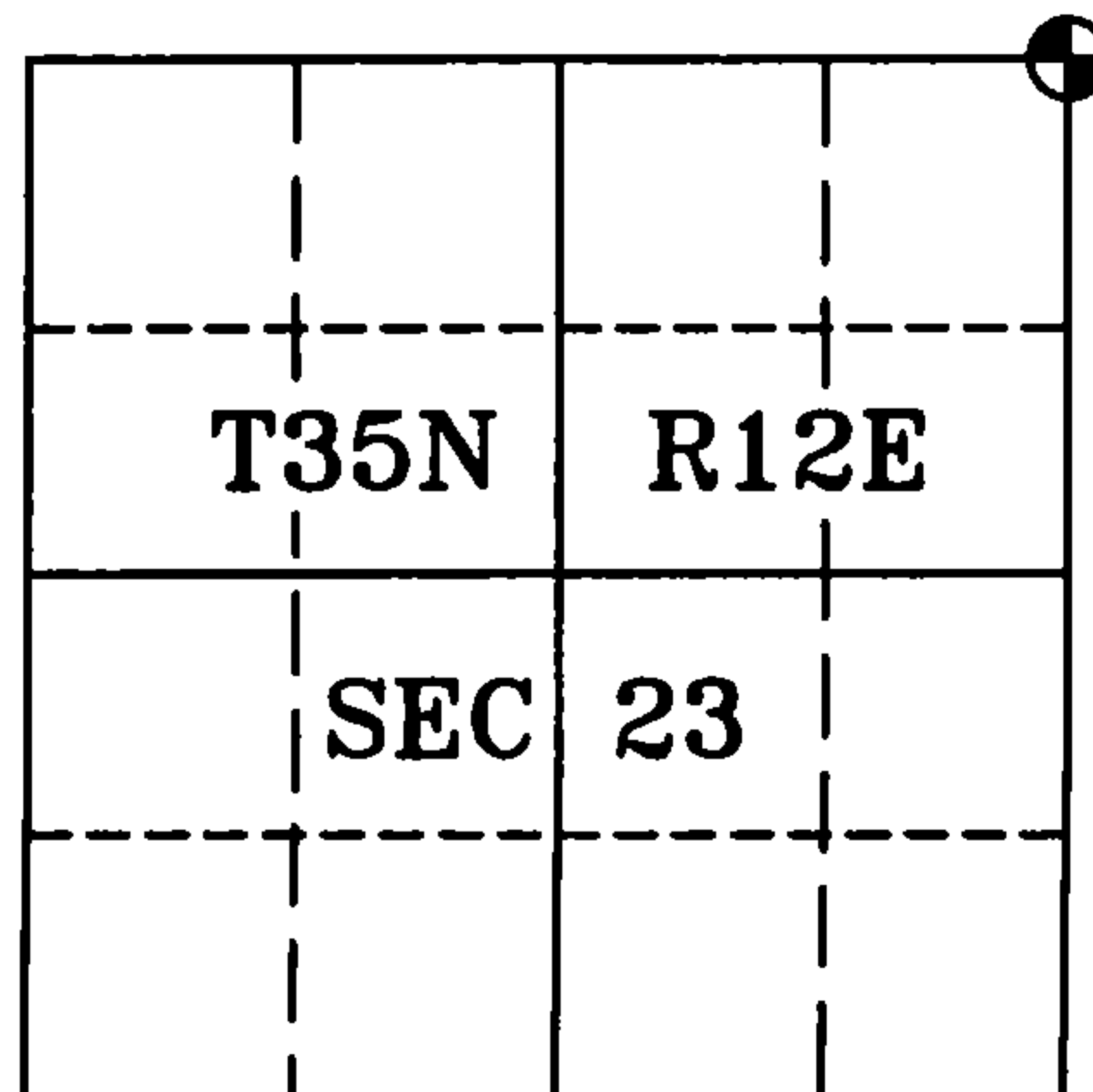
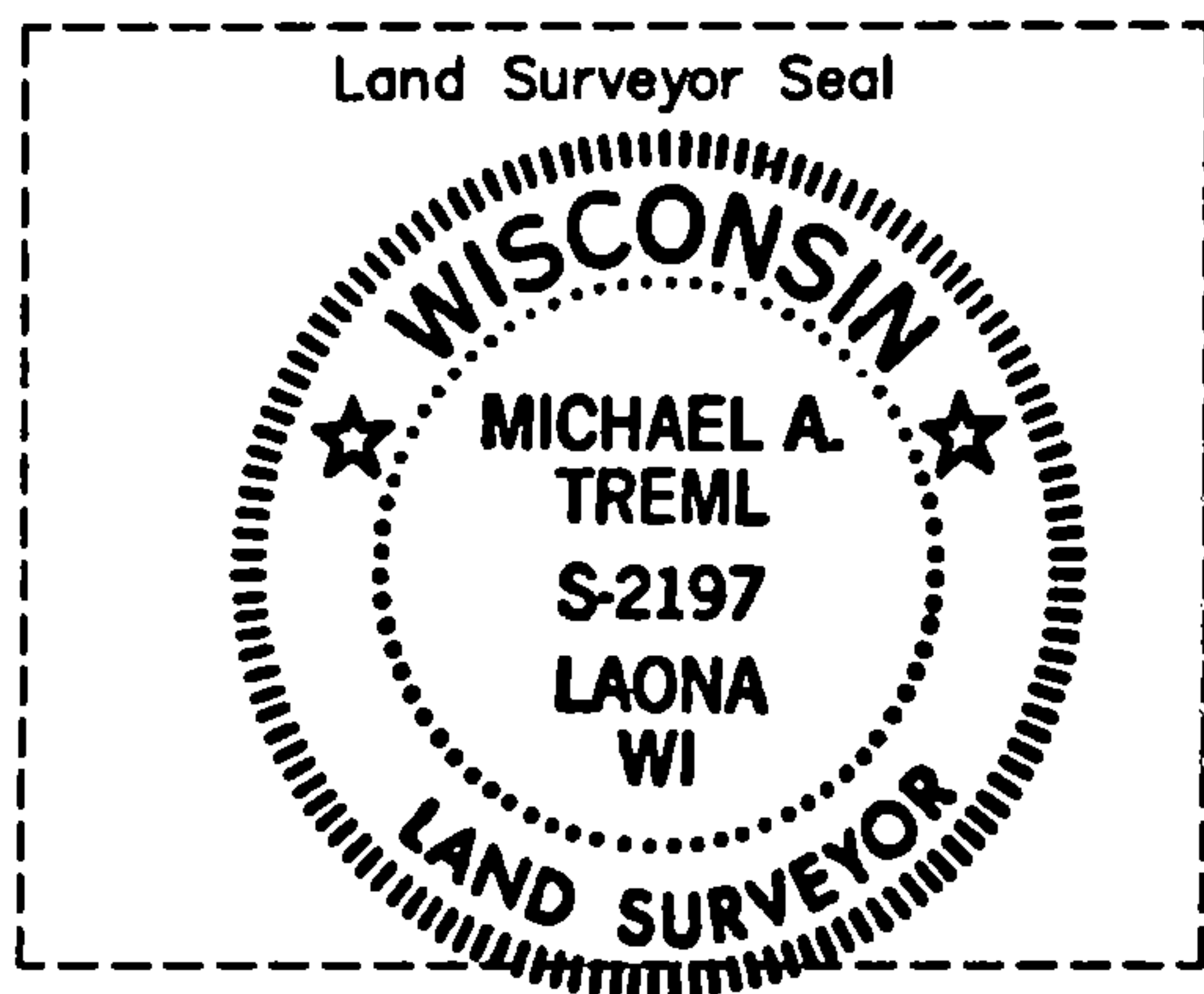
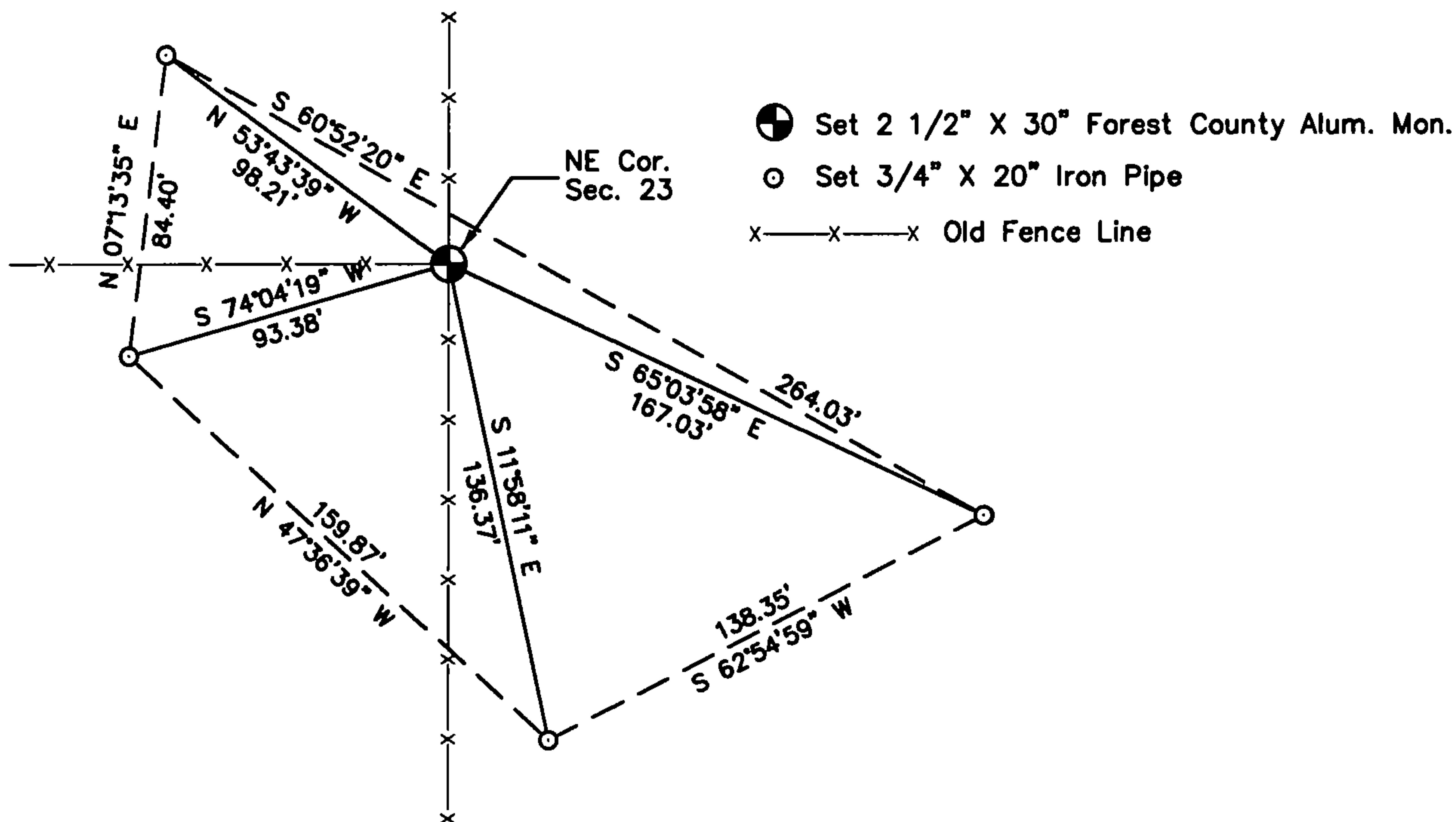
History of original corner establishment and subsequent restorations and descriptions of any record, monument, occupational, testimonial or other evidence considered:

- 1865 - J. L. Nowlin set post for corner to Sections 13, 14, 23 & 24 and made the following B.T.'s:
Aspen, 5", N 27° W, 15 lks., 9.90'
Aspen, 4", N 33° E, 20 lks., 13.20'
- 2005 - I found no evidence of the original corner. I set a 2 1/2" x 30" Forest County Aluminum Pipe Monument at intersection of old fence lines running North and South and West. I accepted the fence line intersection as the best available evidence of the Section corner position.

Corner was: (Check All That Apply)

- ☐ Restored through acceptance of an obliterated evidence location.
☒ Restored through acceptance of a found perpetuated location.
☐ Considered a lost corner and reestablished through lost corner proportionate methods (include a plan view drawing showing distances and directions to other Public Land Survey Corners used for proportioning and determining the corner location).
☐ Restored or reestablished in a location that differs from a previous restoration or reestablishment (include a plan view drawing and indicate what was set and/or found).

Describe the monument and accessories used to perpetuate the location of this corner (include a plan view drawing and indicate what was set and/or found).



I, Michael A. Trembl, RLS
(type or print name) certify that the corner location shown on
this record was determined by me or under my direction and
control and that this U.S. Public Land Survey Monument Record
is correct and complete to the best of my knowledge and belief.

Michael A. Trembl 10/28/05
Signature Date

The Northeast corner of
Section 23 T. 35 N., R. 12 E.
Forest County, WI

Index No. N-21
2005

43512140000

N-21