

239583

REGISTER OF DEEDS OFFICE
FOREST COUNTY
FILED

FEB 21 2023

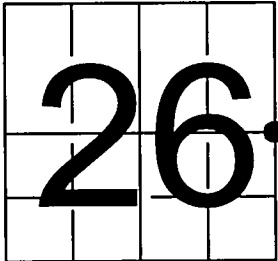
CORTNEY BRITTEN CLEEREMAN
REGISTER OF DEEDS

U S PUBLIC LAND SURVEY MONUMENT RECORD

NOTE: This form is intended and designed to fulfill all requirements of Wisconsin Administrative Code, Chapter A-E 7.08 U.S. Public Land Survey Monument Record (3) (a-i)

A-E 7.08(3)(a) Identity of corner
EAST CORNER OF SECTION 26
TOWNSHIP 35 NORTH
RANGE 12 EAST OF THE 4TH PM
TOWN OF NASHVILLE
COUNTY OF FOREST

WISCORS - FOREST COUNTY
N: 540221.548 USft
E: 825605.21 USft
Datum: NAD83 (2011)
GNSS Method RTN - Direct
GNSS Control WISCORS VRS



The coordinate value shown has been verified by the average of two or more GPS observations at a markedly different time.

A-E 7.08(3)(b) Description of any record evidence, monument evidence, occupational evidence, testimonial evidence, or any other material evidence.

Original Surveyor: JAMES L. NOWLIN

Date of Original Survey Commenced: JUNE 26, 1865 Original Accessories:
Completed: JULY 7, 1865 W. PINE 20 N 50° E 250 Links
Note: no other tree near

NOV. 10, 1975 - Surveyor S-887 - Thomas R. Arnott - indicates this position as Forest County Aluminum Monument reset from found 1-1/4" Iron Pipe with Wooden Post on USPLSS Monument Record #43512262000. Arnott noted the following ties:

Oak 8" N10E 21.24 feet
Oak 10" S24W 39.53 feet

FEB. 23, 1977 - Surveyor S-1170 - Stuart L. Foltz - indicates this position as Forest County Aluminum Monument found on Map #351225-19770223. Foltz noted the following ties:

Oak 10" N10E 21.0 feet
Oak 8" S23W 39.2 feet

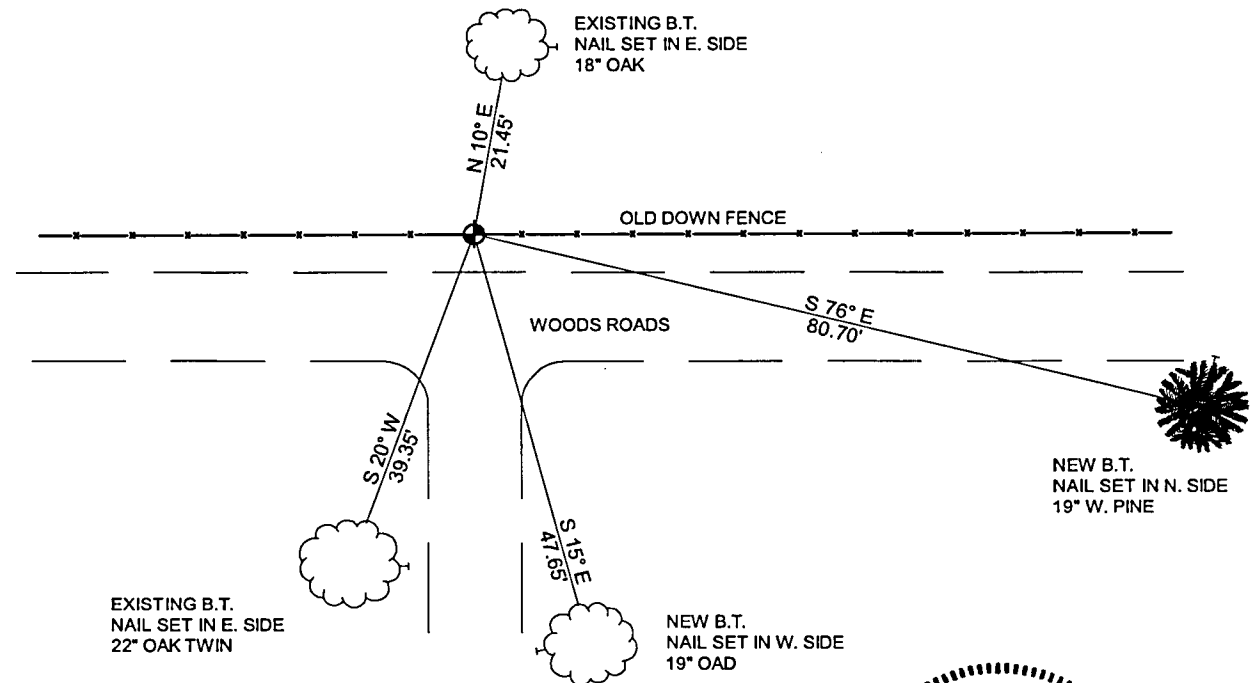
July 6, 2010- Surveyor S-2118 - Michael L. Oestreich - indicates this position as a Brass Capped 2.4" dia. Mon. found in place on Map #351225-351331.

A-E 7.08(3)(f) Whether the corner was restored through acceptance of an obliterated location or a found perpetuated location.

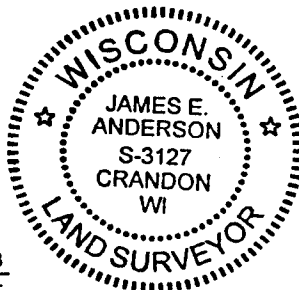
April 17, 2021 - I found a Forest County Aluminum Monument and referenced corner as shown below.

I accept this monument as a FOUND PERPETUATED LOCATION OF THE CORNER and established 4 new witnesses as shown below.

A-E 7.08(3)(c)(d)(e)(h) Plan view of corner with references to at least 4 witness monuments. If in disagreement with previously established corner, show the distances between the two corners and also indicate the ties to the disputed. The directions and distances to other public land survey corners used as evidence or used for determining the corner location.



A-E 7.08(3)(i) I, James E. Anderson, Professional Land Surveyor No. S-3127, hereby certify that the corner location on this record was determined by me or under my direction and control and that this U.S. Public Land Survey Monument Record is correct and complete to the best of my knowledge, and belief



SIGNATURE

FEBRUARY 12, 2023

DATE

43512262000

T-21