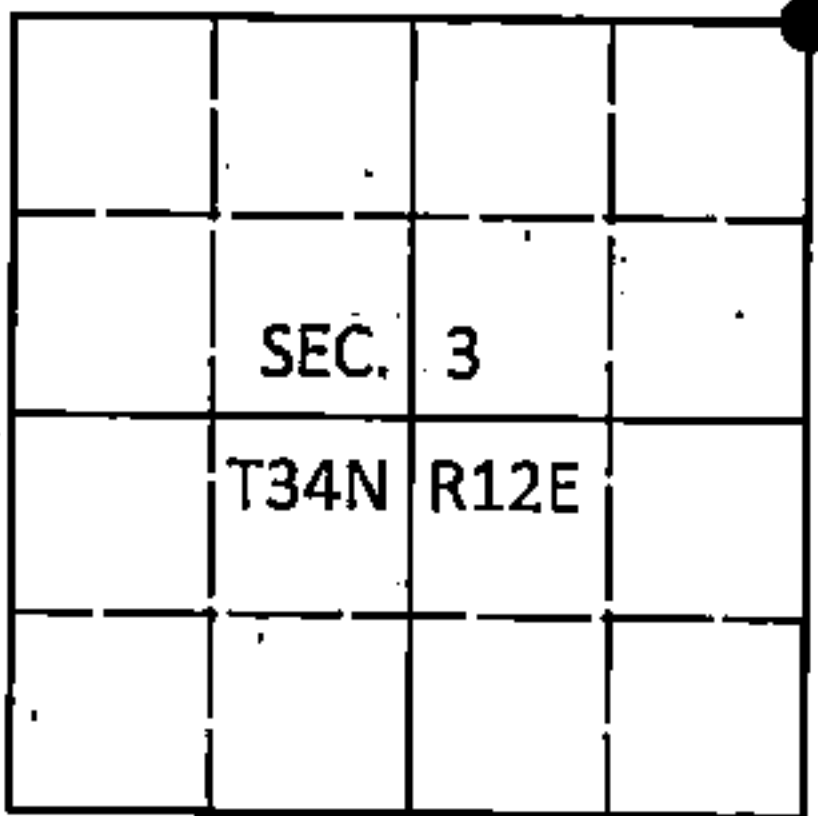


U.S. PUBLIC LAND SURVEY MONUMENT RECORD

Note: This form is intended and designed to fulfill all requirements of Wisconsin Administrative Code, Chapter A-E 7.08 U.S. Public Land Survey Monument Record (3)(a-l).

(a) CORNER LOCATION
Cor. of Secs. 2, 3, 34 & 35
Township 34 & 35 North
Range 12 East of the 4th P.M.
Town of Ainsworth/Nashville
County of Langlade/Forest

WISCRS - Langlade County
N: 458,688.98 USft
E: 668,810.33 USft
WISCRS - Forest County
N: 532,262.48 USft
E: 820,170.07 USft
Datum: NAD 83(2011)
GNSS Method: WISCORS RTN



(b) HISTORY OF ORIGINAL CORNER ESTABLISHMENT

Original Surveyor: Alfred Millard

Original Accessories:

Date of Survey Commenced: August, 1857
Completed: August, 1857

Tamarack 12" N65°E, 24 lks.
Spruce 10" N40°W, 9 lks.
Spruce 10" S50°W, 13 lks.
Tamarack 12" S80°E, 22 lks.

(b)(f)(g)(h) Description of monument found at this corner and if it was accepted, state all evidence (material, testimonial, occupational, plats, records, other monuments) used as a basis for accepting. If not accepted or if nothing was found, state evidence used as basis for establishing location. If re-established through lost corner proportionate methods, indicate all monuments, distances and directions used to establish. Indicate type of monument and sign post found or set.

This is a perpetuation of a previous USPLS Monument Record by Raymond J. Hallisy, RLS dated July 5, 1971 and filed in the office of the Langlade County Surveyor. A complete history of the corner can be found on the previous monument record. I accept the previous location as a true and faithful perpetuation or reestablishment of the original corner location and further perpetuate it as follows.

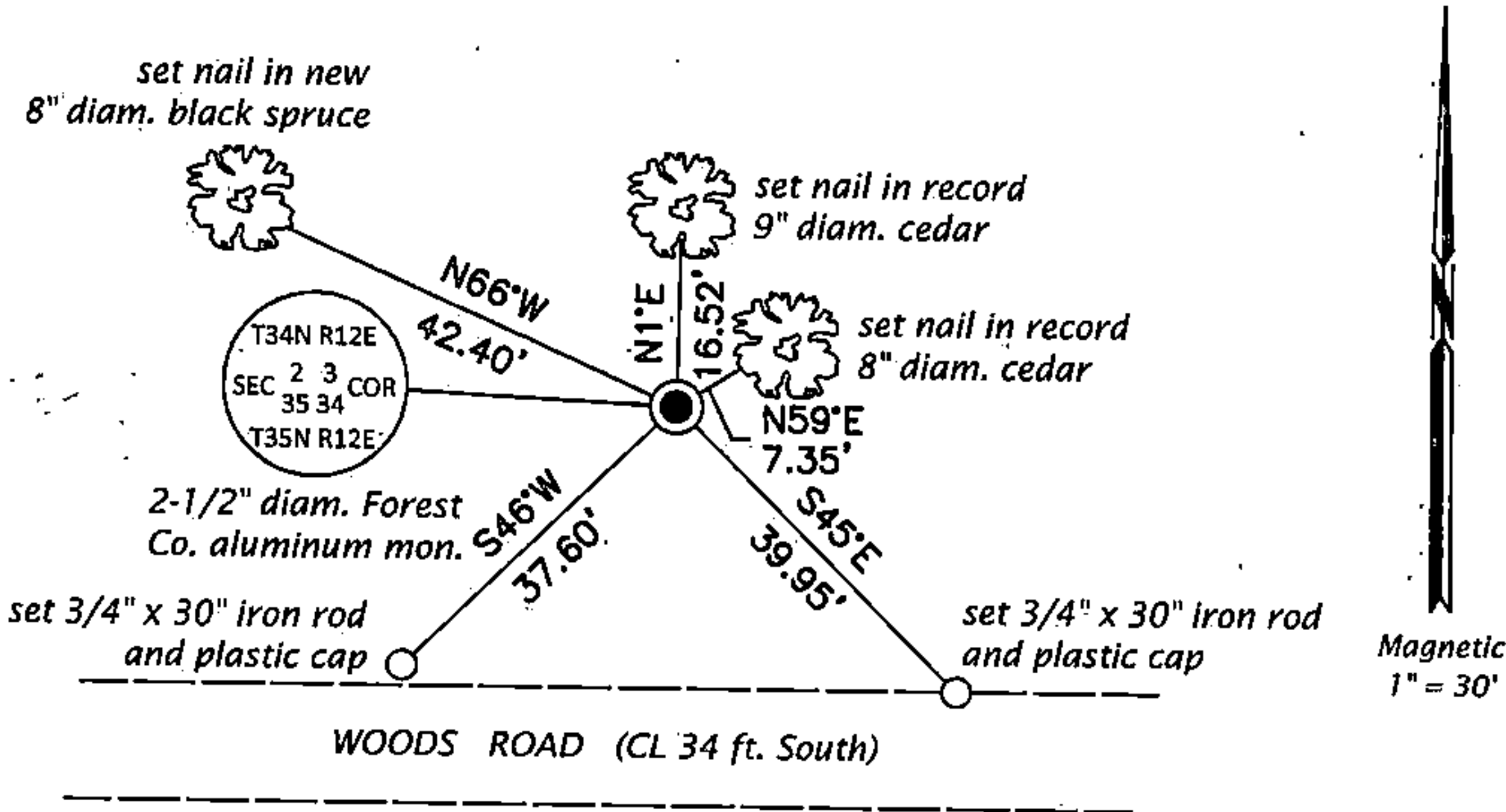
This is a perpetuation of a previous USPLS Monument Record by Thomas R. Arnott, RLS dated November 10, 1975 and filed in the office of the Forest County Register of Deeds. A complete history of the corner can be found on the previous monument record. I accept the previous location as a true and faithful perpetuation or reestablishment of the original corner location and further perpetuate it as follows.

To augment the record:

September 8, 1982: Survey of Sec. 35 for Exxon by Stuart L. Foltz, RLS indicates corner is marked by a Forest County aluminum monument with the following BT's: 5" w. pine S26°E, 9.6'; 4" cedar N58°E, 7.3'; 6" cedar N2°E, 16.2'.

October 23, 2016: I found and accepted the record monument, a 2-1/2" diam. aluminum pipe with a 3-1/4" diam. Forest Co. aluminum cap flush with the ground surface. I set a DEEP-1 magnet adjacent to the monument. The record white pine bearing tree is down. I found or established accessories as shown below. I found a white vinyl sign post bearing West, 1.1 ft.

(c)(d)(e) Plan view of corner with ties to at least 4 witness monuments. If in disagreement with previously established corner, show the distances between the two corners and also indicate the ties to the disputed.

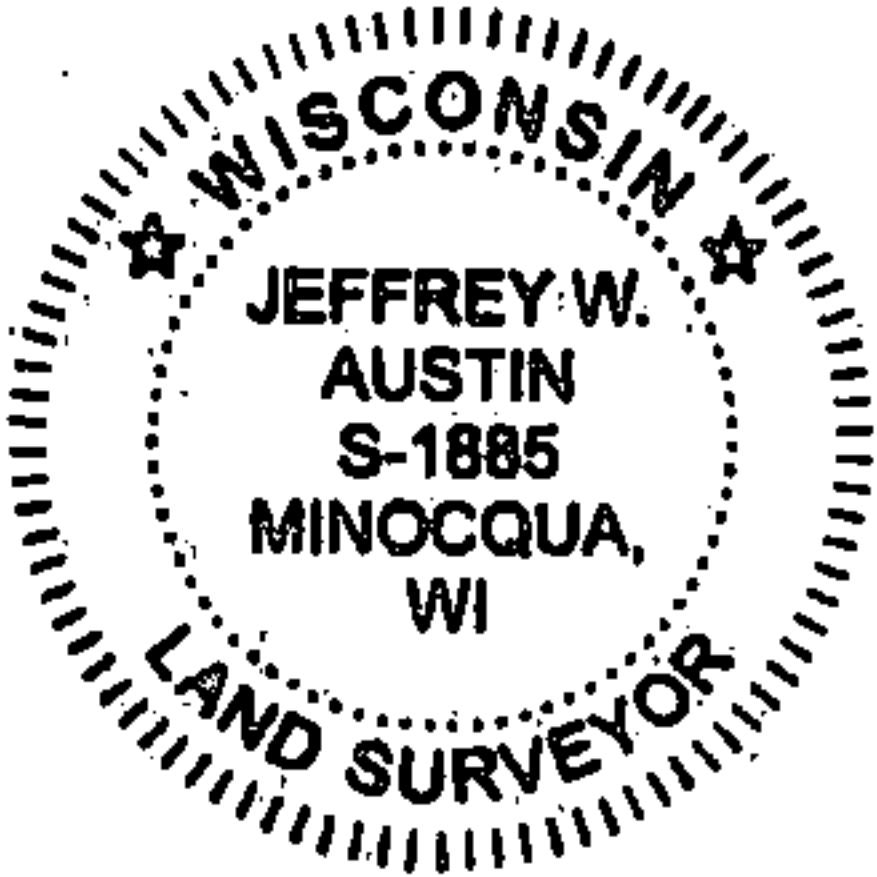



FOREST COUNTY, WI
CORTNEY BRITTEN CLEEREMAN
REGISTER OF DEEDS
RECEIVED FOR RECORD

APR 27 2018

Time: 10:00 A.M.
Vol.: Corner Restoration
Page Number: 2-17

(i) I, Jeffrey W. Austin, Professional Land Surveyor No. S-1885, hereby certify that the corner location on this record was determined by me or under my direction and control and that this U.S. Public Land Survey Monument Record is correct and complete to the best of my knowledge and belief.




Signature

May 4, 2017
Date

CERTIFIED LAND CORNER RESTORATION

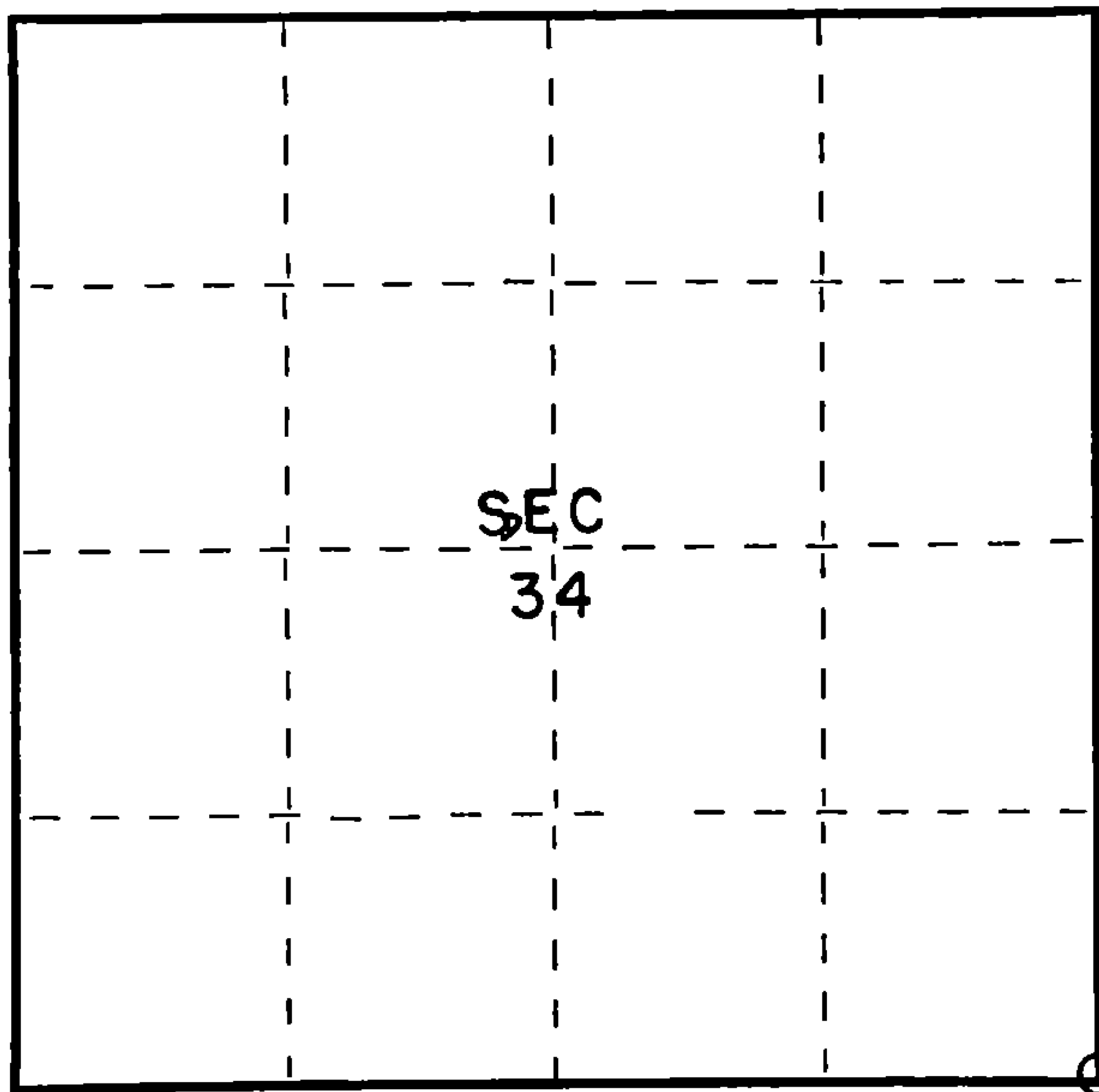
Index No. **217**

State of Wisconsin }
County of Forest } ss.

I Thomas R. Arnott, do hereby
certify that on the 22nd day
of September, 19 75, I found
evidence of the section
corner of sections 2, 3, 34 & 35
Township 34 & 35, North, Range
12 E, Fourth Principal Meridian,
as described hereon; and that from this evidence
I established a new monument and accessories
as described hereon to perpetuate the original
location of this corner.

Resident witnesses:

Herbert Wagoner



○ = Corner monument restored.

History of original corner establishment:

Tamarac	12	N65E	24 Lks.
Spruce	10	N40W	9 Lks.
Spruce	10	S50W	13 Lks.
Tamarac	12	S80E	22 Lks.

Description of corner evidence found:

3 wood post found



Description of monument and accessories I established to perpetuate the original location of this corner.

set new Forest County aluminum monument

Ties:

Cedar	8"	N9E	16.57 feet	(BT found)
Cedar	6"	N66E	7.50 feet	
W. Pine	6"	S24E	9.70 feet	(BT found)

Dated at Crandon, Wis., this 10th day of November, 19 75.

Signature Thomas R. Arnott Title Land Surveyor Registration No. S-887
(County Surveyor, Registered Land Surveyor, or other duly authorized official)

Office of Register of Deeds, County of Forest, I hereby certify that the within
instrument was filed in this office for record on the 10th day of November, 19 75
at 3 o'clock P. M.

EUGENE STATEZNY
(Register of Deeds)

Document Number **108187**

By Eileen Schmidt Deputy