

232900

JAN 08 2021

U.S. PUBLIC LAND SURVEY MONUMENT RECORD

Time: 10:00 A.M.
Vol.: Corner Restoration
Page Number: E-14

NOTE: This form is intended and designed to fulfill all requirements of Wisconsin Administrative Code, Chapter A-E 7.08 U.S. Public Land Survey Monument Record. An additional sheet may be added if necessary to conform with said requirements.

CORNER LOCATION:
Meander Corner between Sections 3 & 10
Township 35 North, Range 13 East of the 4th P.M.
Town of Lincoln, Forest County, Wisconsin

ROMPORTL ID NUMBER:
43513030029

FOREST COUNTY COORDINATES:
(NAD83/2011)
N: 558,487.992
E: 848,096.258

HISTORY OF ORIGINAL CORNER:
ORIGINAL SURVEYOR: James L. Nowlin
DATE OF SURVEY: September 1865
ORIGINAL ACCESSORIES: 20" White Pine, S56°W, 40 lks
12" Cedar, N38°E, 9 lks

6	5	4	3	2	1
7	8	9	10	11	12
18	17	16	15	14	13
19	20	21	22	23	24
30	29	28	27	26	25
31	32	33	34	35	36

T35N - R13E

DESCRIPTION OF MONUMENT FOUND AT THIS CORNER AND IF IT WAS ACCEPTED, STATE ALL EVIDENCE (MATERIAL, TESTIMONIAL, OCCUPATIONAL, PLATS, RECORDS, OTHER MONUMENTS) USED AS A BASIS FOR ACCEPTING. IF NOT ACCEPTED OR IF NOTHING WAS FOUND, STATE EVIDENCE USED AS BASIS FOR ESTABLISHING LOCATION. IF RE-ESTABLISHED THROUGH LOST CORNER PROPORTIONATE METHODS, INDICATE ALL MONUMENTS, DISTANCES AND DIRECTIONS USED TO ESTABLISH. INDICATE TYPE OF MONUMENT AND SIGN POST FOUND OR SET.

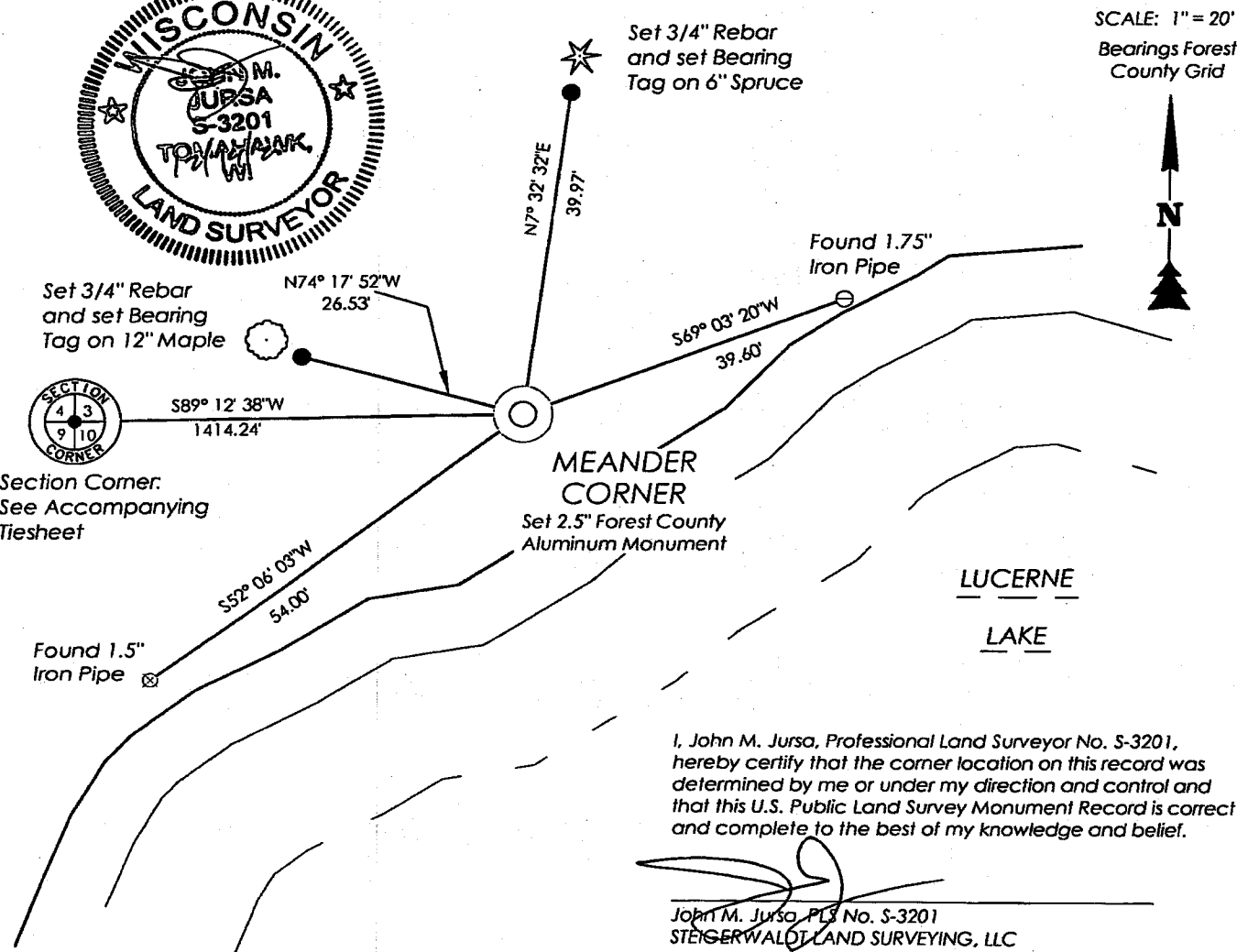
7/15/1998 - Michael A. Tremi shows an Iron Pipe for Meander Corner on CSM 139.

9/10/2008 - Michael L. Oestreich shows a 2.4" Iron Pipe for Meander Corner on Map No. 08-31

3/21/11 - Kip W. Soder shows a 2" Iron Pipe for Meander Corner on CSM 152.

10/29/2020 - Visited corner location and found a 2.5" Iron Pipe. I accepted the Pipe as the corner after measurements coincided with other monuments from maps described above. I found pipe to be damaged and replaced the pipe with a standard Forest County 2.5" X 30" long Aluminum Pipe with 3.25" Aluminum Cap. I established ties as shown below.

PLAN VIEW OF CORNER WITH TIES TO AT LEAST 4 WITNESS MONUMENTS. IF IN DISAGREEMENT WITH PREVIOUSLY ESTABLISHED CORNER, SHOW THE DISTANCES BETWEEN THE TWO CORNERS AND ALSO INDICATE THE TIES TO THE DISPUTED.



I, John M. Jursa, Professional Land Surveyor No. S-3201, hereby certify that the corner location on this record was determined by me or under my direction and control and that this U.S. Public Land Survey Monument Record is correct and complete to the best of my knowledge and belief.

John M. Jursa, PLS No. S-3201
STEIGERWALD LAND SURVEYING, LLC

43513030029

E-14

1/5/23 re-scanned to reflect correct recording date 1/8/2021 - CCR/ROD.