

Document Number

180134

REGISTER'S OFFICE
Forest County, Wis.
Received for record this 15th day
of July A.D., 2003 at
8:40'clock A.M. and recorded
in Vol. Corner Restoration
page C-13
Kay Swanson, Deputy
Register of Deeds

U.S. PUBLIC LAND SURVEY MONUMENT RECORD

(As Required by WI Adm. Code)

History of original corner establishment and subsequent restorations and descriptions of any record, monument, occupational, testimonial or other evidence considered:

1865 - James Nowlin, set original corner post and made the following B.T.'s:

Sugar, 12", S 86° E, 20 lks., 13.20 feet;
Lind, 7", N 78° W, 15 lks., 9.90 feet.

2003 - I found a 3" X 48" iron pipe in a mound of stone. The iron pipe had been used by local surveyors as the 1/4 corner. I accepted the iron pipe as the best possible evidence of the 1/4 corner position. I replaced the iron pipe with a 2" X 30" Forest County Aluminum Pipe Monument and made 4 new B.T.'s as shown below.

Corner was: (Check All That Apply).

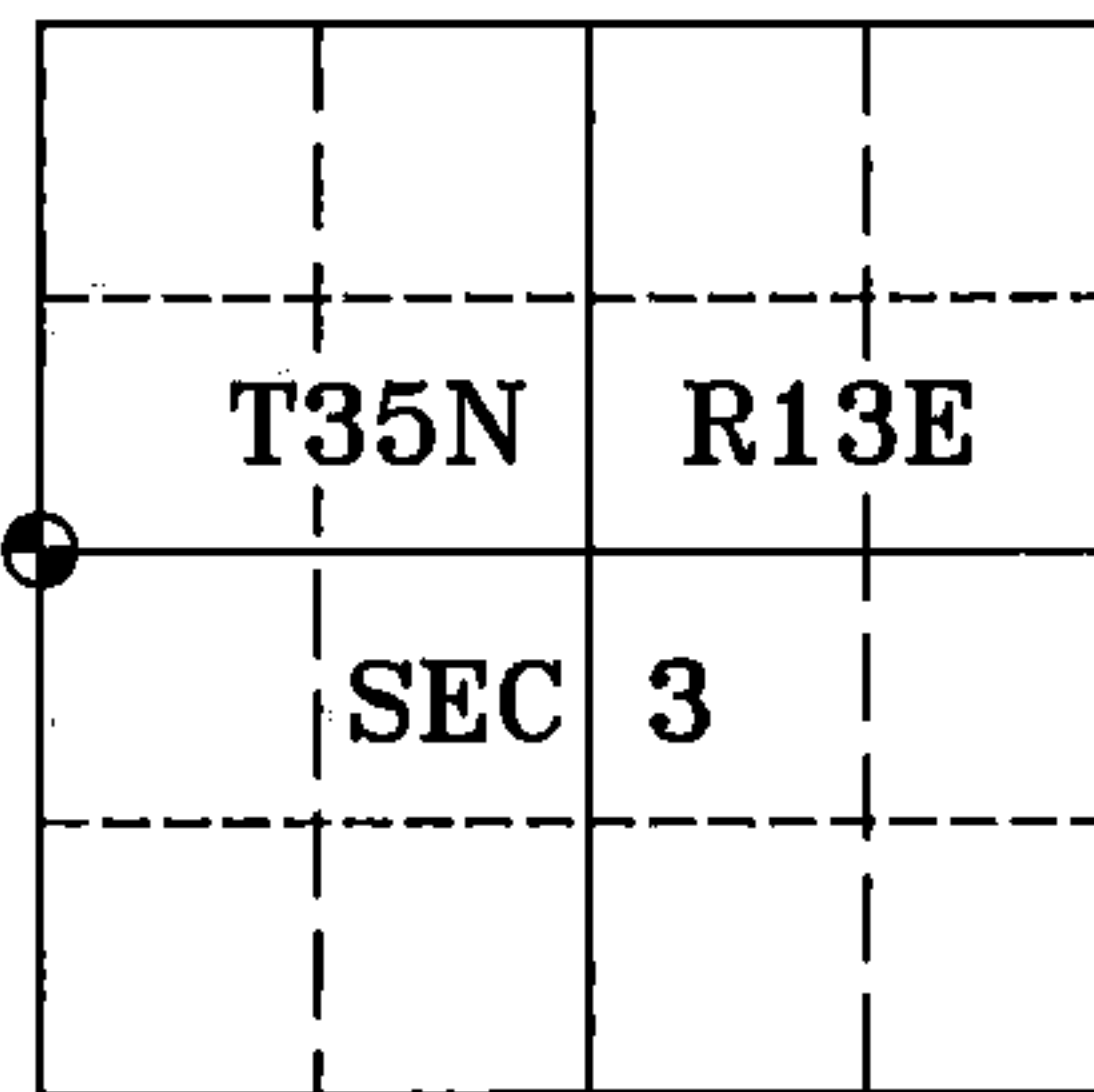
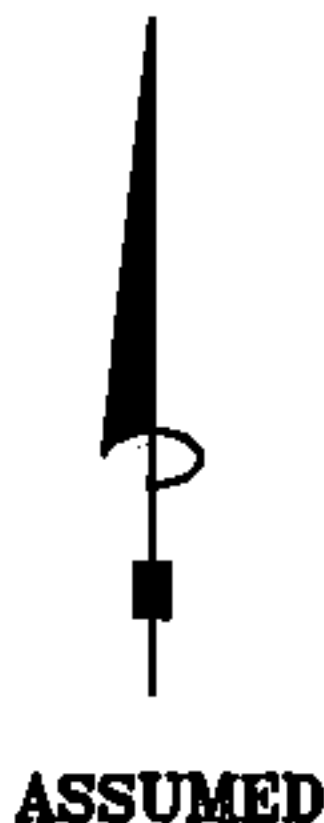
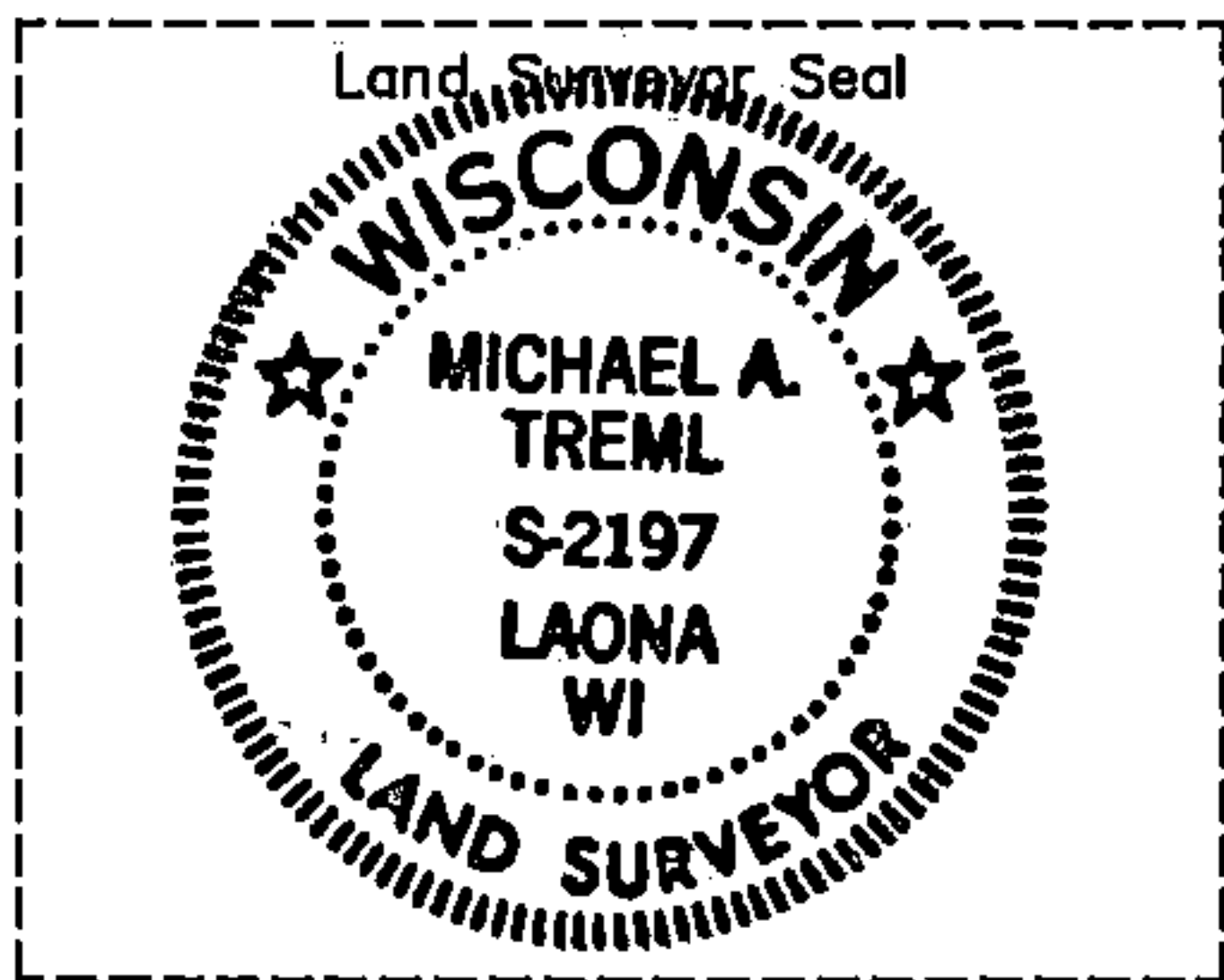
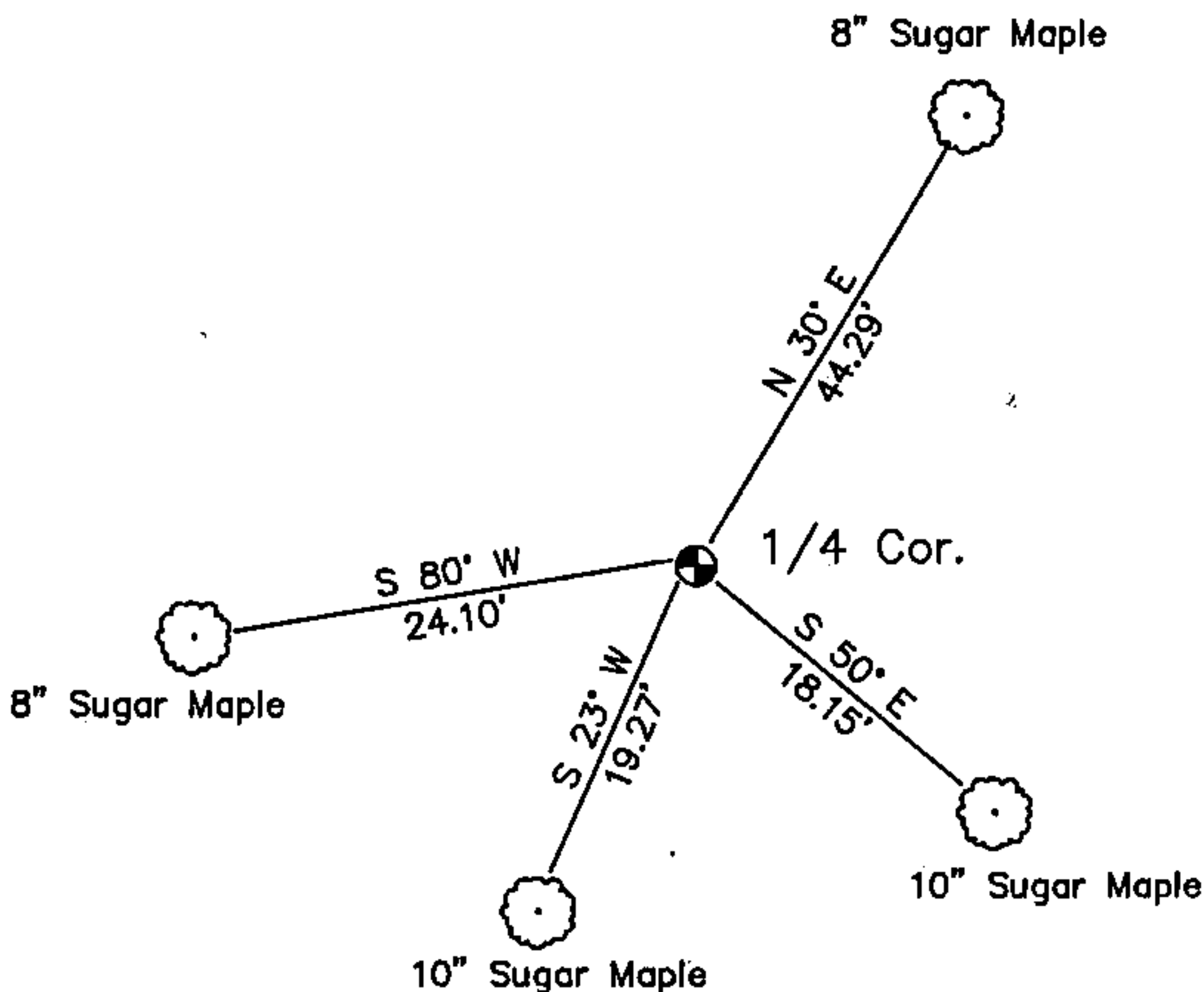
- ☐ Restored through acceptance of an obliterated evidence location.
- ☒ Restored through acceptance of a found perpetuated location.
- ☐ Considered a lost corner and reestablished through lost corner proportionate methods (include a plan view drawing showing distances and directions to other Public Land Survey Corners used for proportioning and determining the corner location).
- ☐ Restored or reestablished in a location that differs from a previous restoration or reestablishment (include a plan view drawing and indicate what was set and/or found).

Describe the monument and accessories used to perpetuate the location of this corner (include a plan view drawing and indicate what was set and/or found).

LEGEND:

⊕ Set 2" X 30" Aluminum Pipe Monument

Note: All distances are
taken to nail in
side of tree.



I, Michael A. Tremel, RLS
(type or print name) certify that the corner location shown on
this record was determined by me or under my direction and
control and that this U.S. Public Land Survey Monument Record
is correct and complete to the best of my knowledge and belief.

Michael A. Tremel 6/16/03
Signature Date

The West Quarter corner of
Section 3 T. 35 N., R. 13 E.
Forest County, WI

Index No. C-13

43513042000

C-13