

JAN 16 2019

Time: 8:30 A.M.
Vol.: Corner Restoration
Page Number: J-K 5

U.S. PUBLIC LAND SURVEY MONUMENT RECORD

(Prepared and as required by S. A-E 7.08 Wi Administrative Code)

Corner was: (check all that apply)

- ☒ Restored through acceptance of an obliterated evidence location
- ☐ Restored through acceptance of a found perpetuated location
- ☐ Determined to be lost and reestablished through proportionate methods.
(Show bearings and distances to PLSS corners used for proportioning)
- ☐ Restored/recovered/reestablished in a location that differs from a previously established position. (Show difference in plan view below.)
- ☐ Check here if additional information is shown on the reverse side of this form

Describe record evidence, recovered physical evidence, occupational evidence, testimonial evidence and all other evidence considered in the recovery/restoration of corner.

1865 - Original Corner established by James L. Nowlin
Original BT'S: SPRUCE 8" N46°E 10 LINKS
BIRCH 10" N65°W 4 LINKS

1960 - Phil Hansen located corner on retracement of north line from N1/4 Section 18 onto lake at 2640 feet and from N1/4 Section 17 onto lake, corner in lake established mid point between two stakes. Then running North from W 1/4 Section 17 to midpoint in lake, established MC at 2111.60 feet North of W 1/4 corner.
At MC Corner between Sections 17 and 18 tied two BT'S and one accessory.
BT'S: ELM 26" NE 11.55 FEET
ELM 7" WEST 13/3 FEET
Accessory
WEST EDGE OF EAST CONCRETE WING OF DAM 86.5 FEET EAST

2019 - Dean A. Williams, James Gardner traversed North from W 1/4 Section 17 through N 1/16 Corner, Sections 17 and 18 at 1322 feet, continued North record 789.60 feet, and used remaining accessory Dam at 85.5 feet east.
Accepted as best possible evidence of corner location.

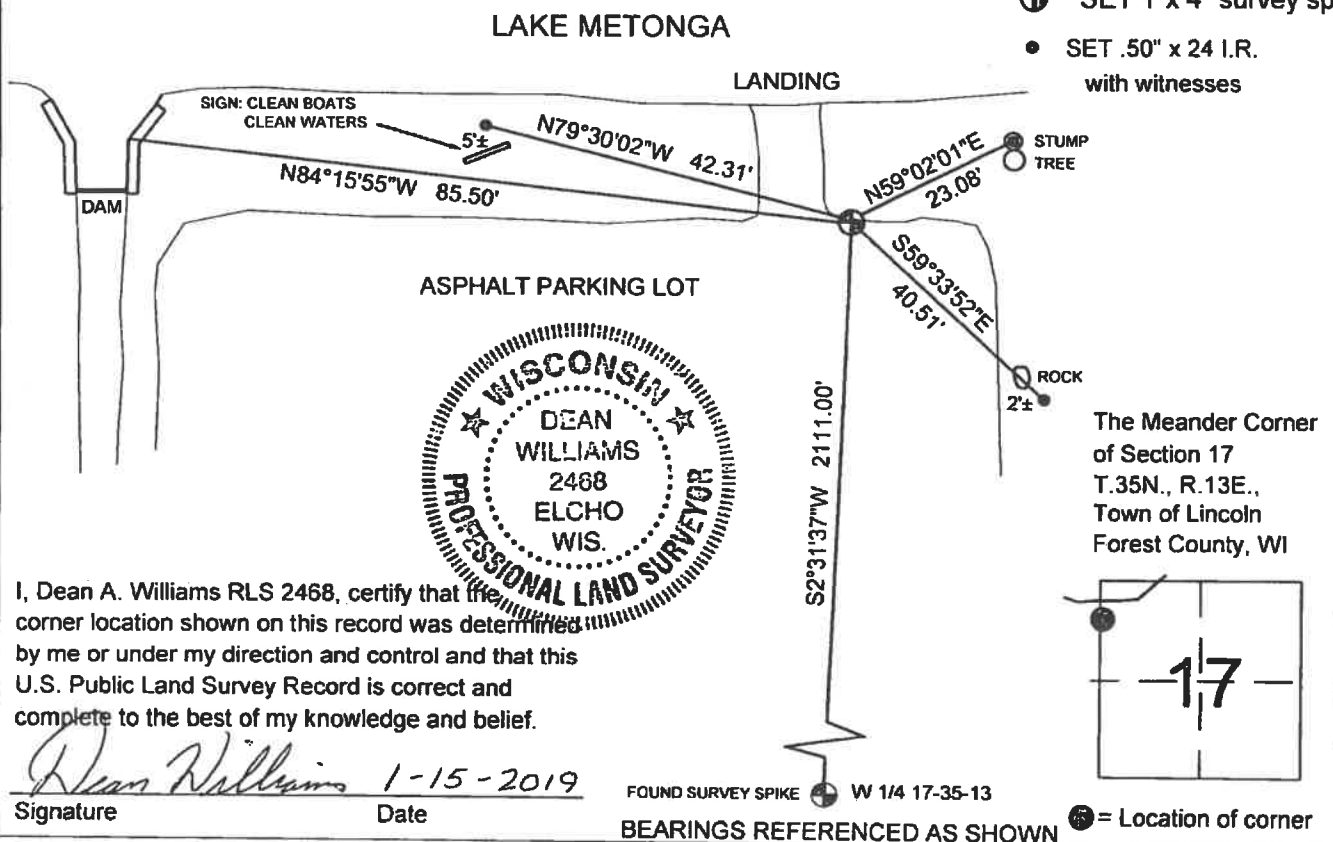
Physical description of the monument set:

2019 - Dean A. Williams Set 1" x 4" survey spike in edge of asphalt parking lot for county park by lake landing.

Describe the accessories used to perpetuate the location of the corner. Include a plan view drawing and indicate accessories found/set. Describe measuring point on bearing trees. Show any topographic features that would aid in future recovery of the corner.

LEGEND

- ⊕ SET 1"x 4" survey spike
- SET .50" x 24 I.R. with witnesses



I, Dean A. Williams RLS 2468, certify that the corner location shown on this record was determined by me or under my direction and control and that this U.S. Public Land Survey Record is correct and complete to the best of my knowledge and belief.

Signature: *Dean Williams* Date: 1-15-2019

FOUND SURVEY SPIKE W 1/4 17-35-13

BEARINGS REFERENCED AS SHOWN

⊕ = Location of corner

435B183700

1/5/2019 re-scanned to reflect correct recording date 1/10/19 - CBE/ROD.

INDEX NO.

J-K 5

241614

NOV 08 2023

CORTNEY BRITTEN CLEEREMAN
REGISTER OF DEEDS

U S PUBLIC LAND SURVEY MONUMENT RECORD

NOTE: This form is intended and designed to fulfill all requirements of Wisconsin Administrative Code, Chapter A-E 7.08 U.S. Public Land Survey Monument Record (3) (a-i)

A-E 7.08(3)(a) Identity of corner:
MEANDER CORNER EAST LINE OF
SECTION 18,
TOWNSHIP 35 NORTH,
RANGE 13 EAST OF THE 4TH PM,
TOWN OF LINCOLN, COUNTY OF FOREST

WISCRS - FOREST COUNTY
N: 552,951.124 USft (XXX,XXX.XXX)
E: 836,096.216 USft (XXX,XXX.XXX)
Datum: NAD83 (2011)
GNSS Method RTK
GNSS Control WISCORS VRS



The coordinate value shown has been verified by the average of two or more GPS observations at a markedly different time. Coordinates shown in parenthesis are previously published values.

A-E 7.08(3)(b)

Original Surveyor: James L. Nowlin

Date of Original Survey	Commenced:	September 11, 1865	Original Accessories:	
	Completed:	September 21, 1865	Spruce	8 N 46° E 10 Links
			Birch	10 N 65° W 4 Links

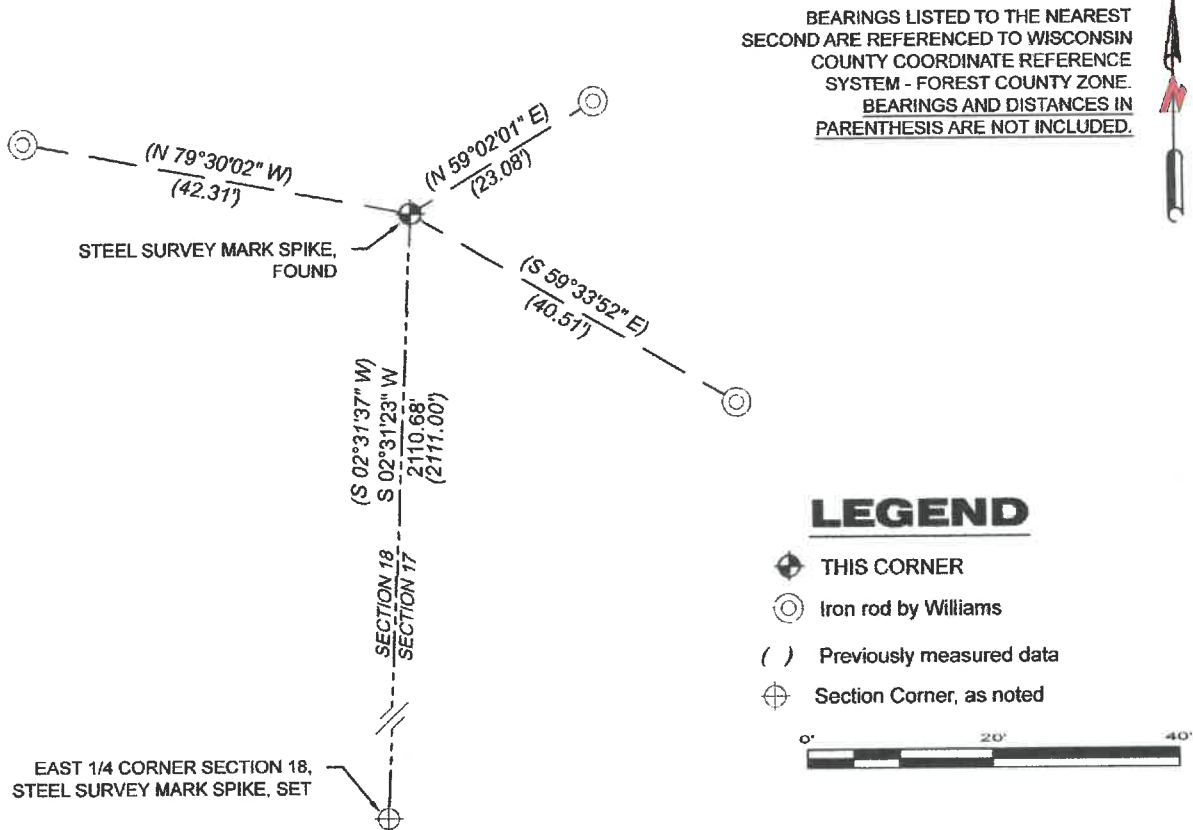
See U.S. Public Land Survey Monument Record J-K 5 - January 15, 2019 - Surveyor 2468 - Dean Williams

THENCE:

February 17, 2023 - I found a steel survey mark spike with a 1" diameter head near the edge of the asphalt parking lot. I also found all of the witnesses as established by Williams in 2019.

THIS U S PUBLIC LAND SURVEY MONUMENT RECORD IS FOR COORDINATES ONLY.

A-E 7.08(3)(c)(d) Plan view of corner with references to at least 4 witness monuments.



A-E 7.08(3)(e) 2019 Surveyor set a 1" x 4" survey spoke. I found a steel survey mark spike with a 1" diameter head.

A-E 7.08(3)(f) I accept this monument as a FOUND PERPETUATED LOCATION of the corner.

A-E 7.08(3)(g)(h) This corner was not determined through lost-corner-proportionate methods.

A-E 7.08(3)(i) I, Jeffrey L. DeMuth, Professional Land Surveyor No. S-2656, hereby certify that the corner location on this record was determined by me or under my direction and control, and that this U.S. Public Land Survey Monument Record is correct and complete to the best of my knowledge, and belief.

SIGNATURE

June 1, 2023

DATE



43513183700

JK5