

U. S. PUBLIC LAND SURVEY MONUMENT RECORD

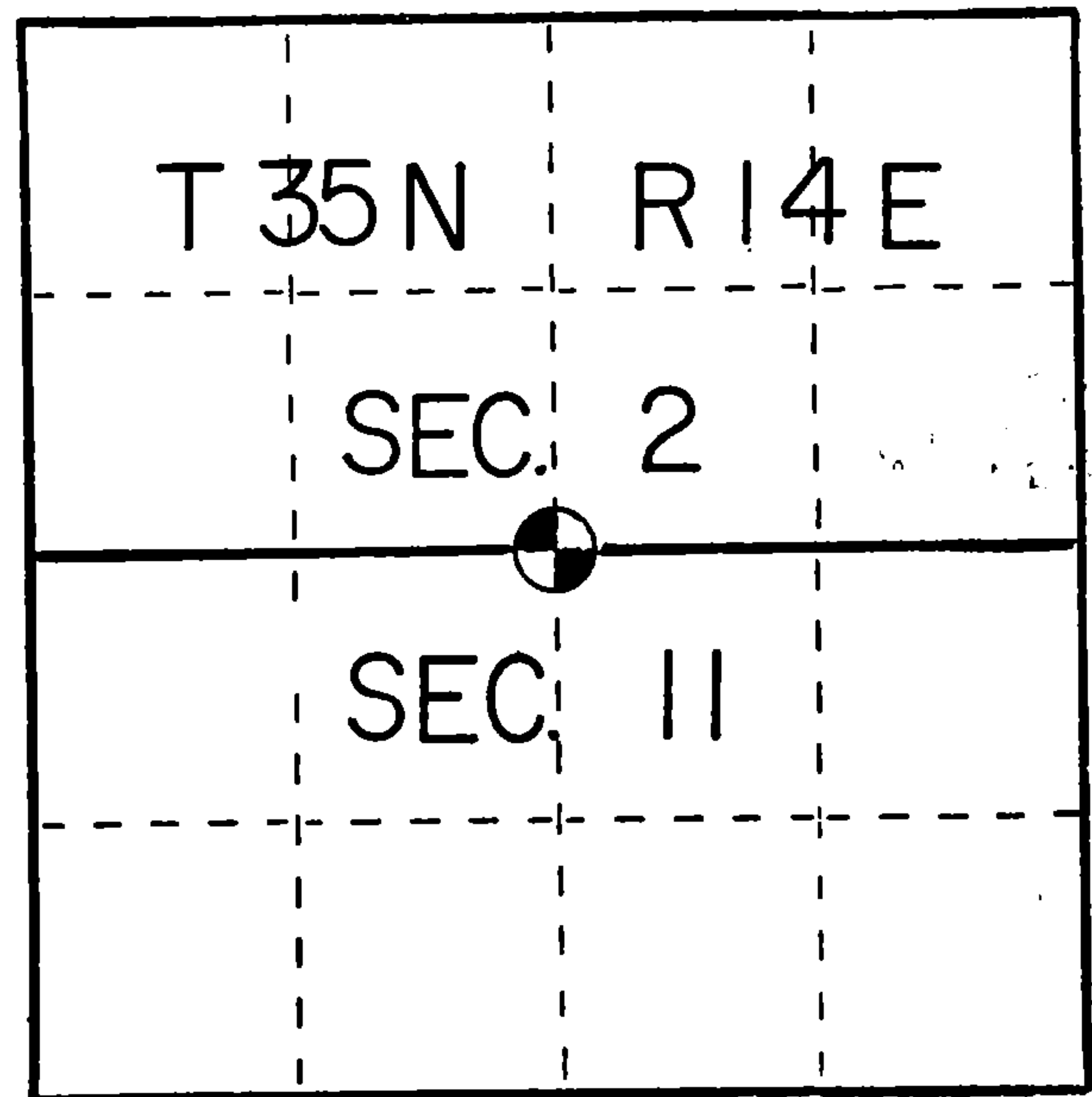
INSTRUCTIONS:

This record shall show the location of the corner and shall include all of the following nine elements (a. through i).

- (a) Identify the corner by reference to the U.S. public land survey system.

○ = Corner monument restored.

Quarter corner to Sections 2-11,
T35N, R14E, Forest County, Wisconsin



- (b) Describe any record evidence, monument evidence, occupational evidence, testimonial evidence or any other material evidence you considered, and whether the monument was found or placed.

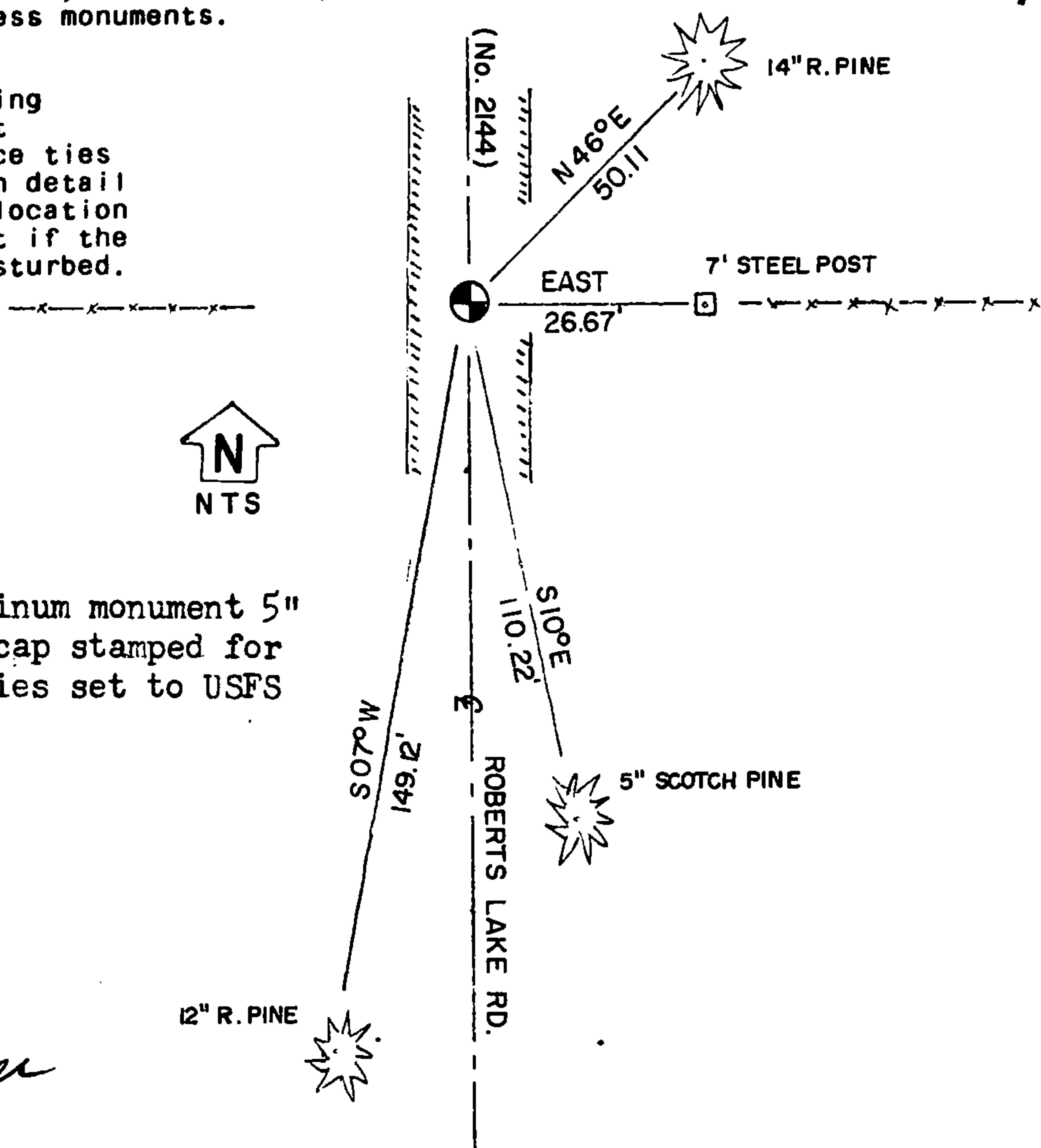
In 1859 J McBride set a wood post with:

Sugar 14" S47W 20 links
Sugar 14" N59W 14 links

Found a railroad spike in the center of a blacktopped roadway and an east-west fence intersection with a 1 1/4" iron pipe west. Road construct on ruined original evidence and after evaluating the occupational fences I accepted the railroad spike as the corner location.

- (c) In the plan view drawing below, provide reference ties to at least 4 witness monuments, or, if the location is within a municipality, to at least 2 witness monuments. (Witness monuments shall be made of concrete, natural stone, iron or other equally durable material.) Describe witness monuments.

- (d) Show a plan view drawing depicting the relevant monuments and reference ties which is sufficient in detail to enable accurate relocation of the corner monument if the corner monument is disturbed. Indicate north.



Set a 2"x 30" Aluminum monument 5" under asphalt with cap stamped for corner and accessories set to USFS standard

REGISTER'S OFFICE
Forest County, Wis.
Received for record this 4th day
of August A.D., 1985 at
3:00 o'clock P M. and recorded
in Vol. CORNER RESTORATIONS
page E-19
Paul Aschubrenner
Register of Deeds

INDEX NO. E-19

43514020020

- (e) Describe any material discrepancy between the location of the corner as restored or reestablished and the location of that corner as previously restored or reestablished by distance and direction. Show the discrepancy on the plan view drawing under (d), above. Show the distances between the corner as previously restored or reestablished and (1) the corner as restored or reestablished, and (2) to at least 2 of the witness monuments shown on the drawing in (d), above.

No discrepancy

See map
The corner was restored by the same method as previously restored or reestablished by distance and direction. The discrepancy is shown on the plan view drawing under (d), above. The distances between the corner as previously restored or reestablished and (1) the corner as restored or reestablished, and (2) to at least 2 of the witness monuments shown on the drawing in (d), above.

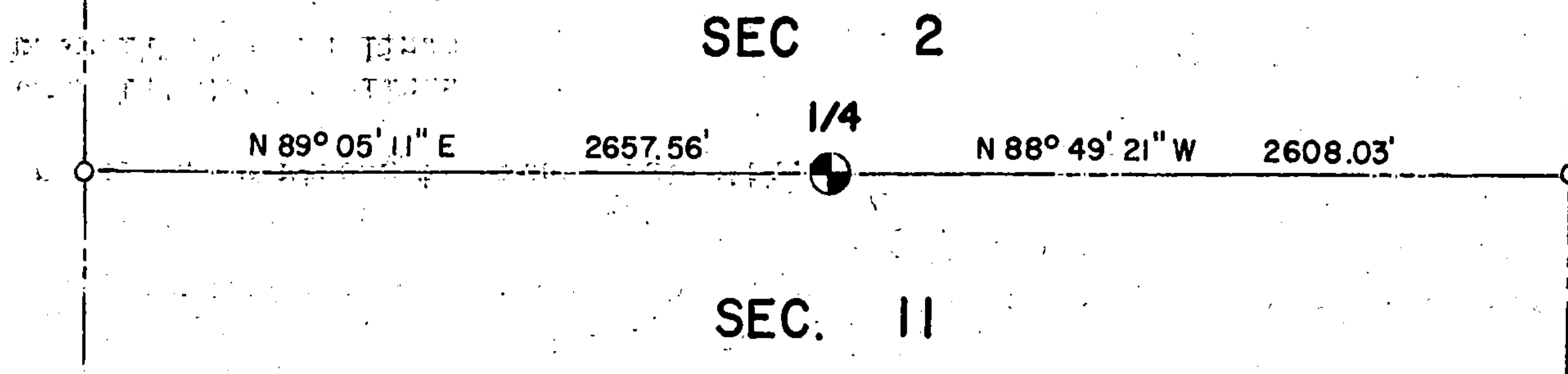
- (f) Was the corner restored through acceptance of (1) an obliterated evidence location, or, (2) a found perpetuated location?

Found perpetuated location

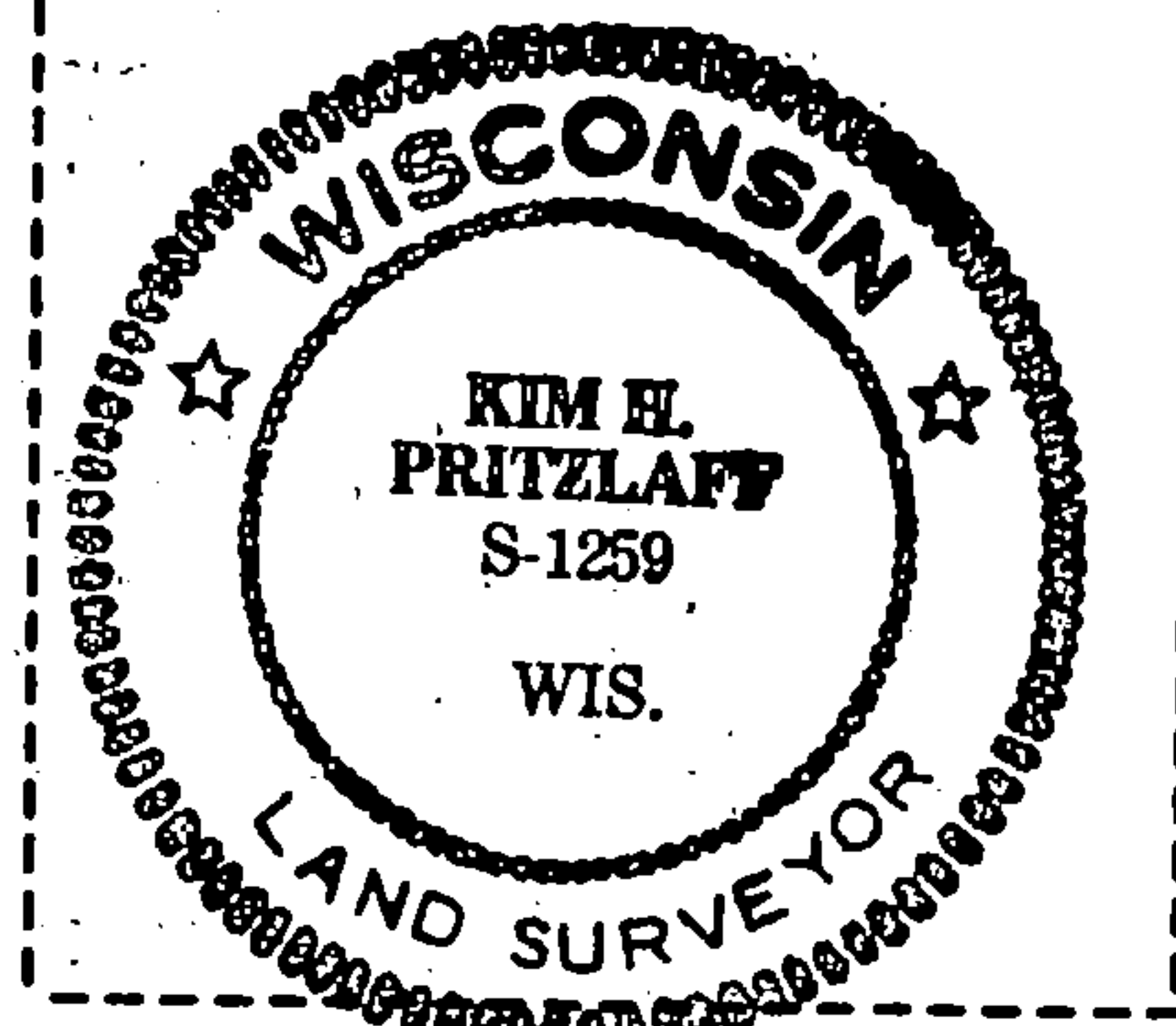
- (g&h) Was the corner reestablished through lost corner proportionate methods? If so, show the method, including the directions and distances to other public land survey corners used as evidence or used for proportioning in determining the corner location?

No

The corner was restored by the same method as previously restored or reestablished by distance and direction. The discrepancy is shown on the plan view drawing under (d), above. The distances between the corner as previously restored or reestablished and (1) the corner as restored or reestablished, and (2) to at least 2 of the witness monuments shown on the drawing in (d), above.



Affix Land Surveyor Seal



- (i) Kim H Pritzlaff
(type or print name) certify that the corner location shown on this record was determined by me or under my direction and control and that this U.S. Public Land Survey Monument Record is correct and complete to the best of my knowledge and belief.

Signature

Date

Kim H Pritzlaff

3-14-85