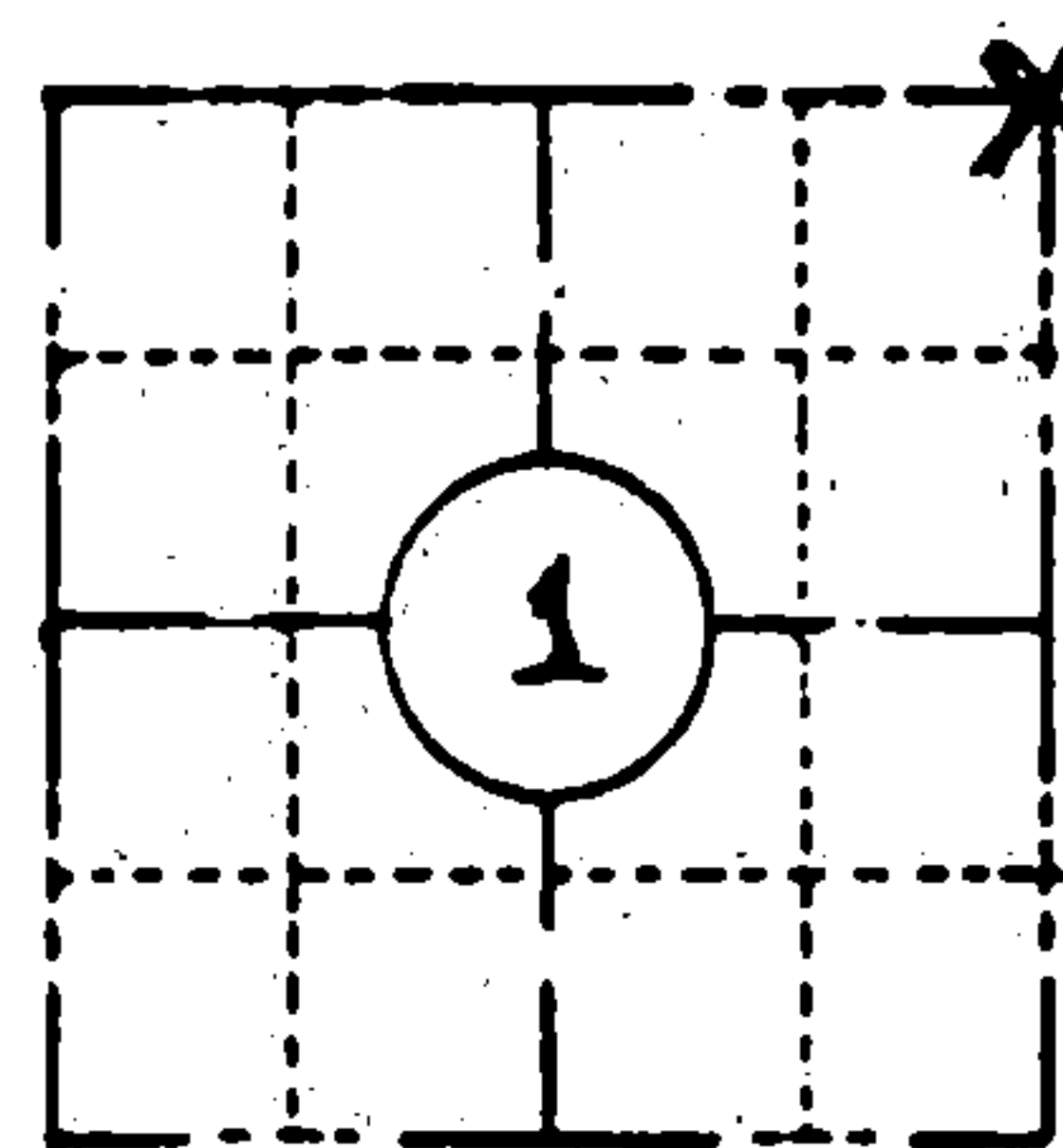


ORIGINAL ON FILE IN CO CLERK'S OFFICE  
COPY HERE FOR REFERENCE

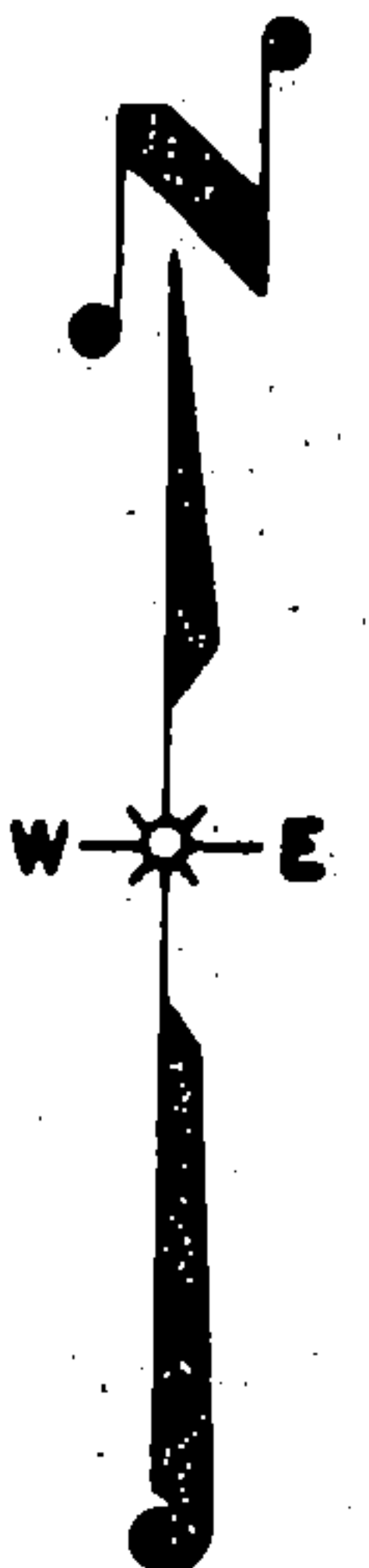
FIELD SURVEY NOTES  
PRESERVATION OF LANDMARKS  
(Pursuant to Section 59.635(7) Wisconsin Statutes  
E-D-707-69

State of Wisconsin / Department of Transportation

COUNTY <i>FOREST</i>		
TOWN <i>FREEDOM, WABENO, LAONA</i>		
HIGHWAY <i>S.T.H. 32</i>		
SECTION <i>1</i>	TOWNSHIP <i>34 N</i>	RANGE <i>14 E</i>
TYPE OF LANDMARK <i>DE MAIL - AGREES WITH U.S.F.S. R.M.'s</i>		

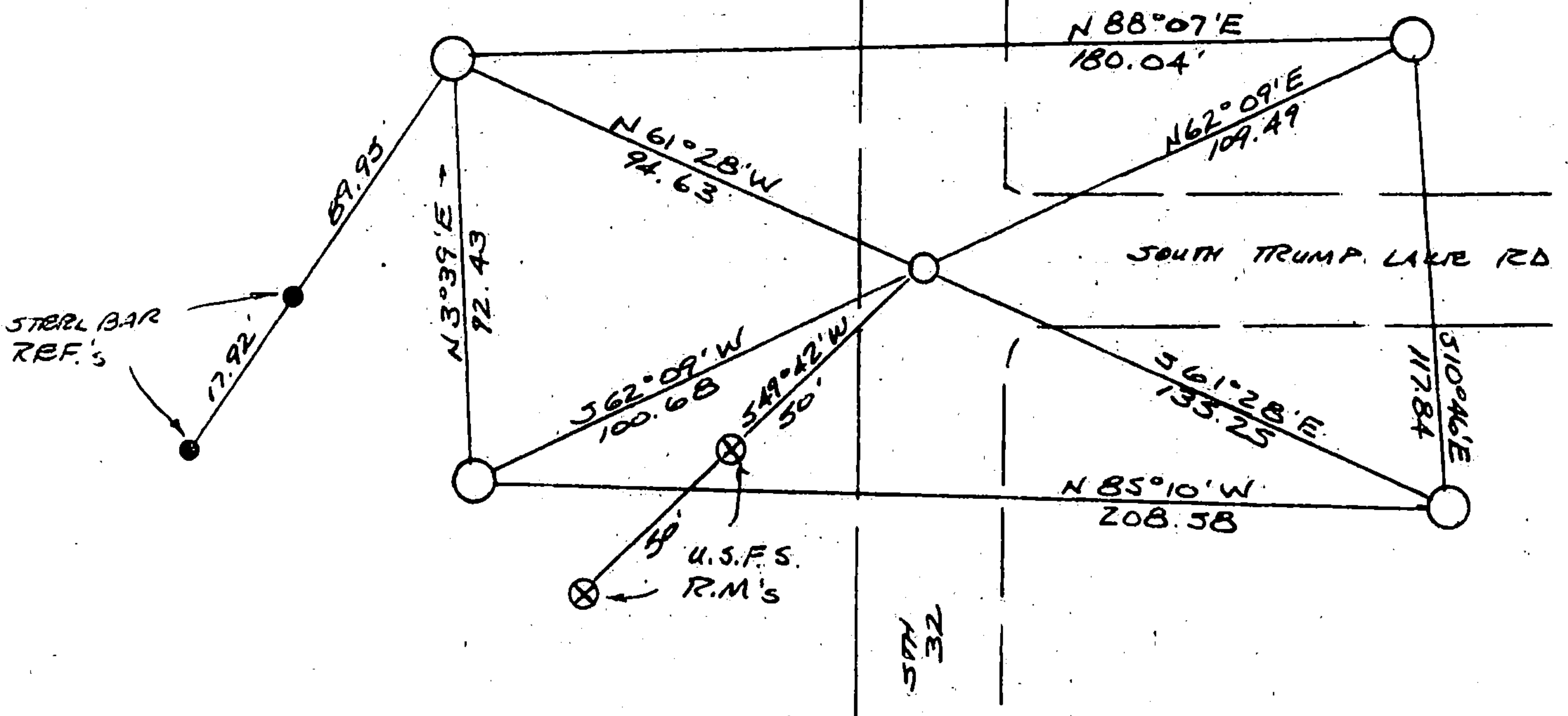


LOCATION SKETCH  
(Location of landmark indicated by "x")



This space for copy of field notes or ties to the above described landmarks

ALL MONUMENTS ARE BRANTSEN MAG.  
ALUMINUM MONUMENTS AND ARE STAMPED:  
WITH "W.C." & DIST. TO CORNER.  
BRGS ARE REFERENCE TO S.T.H. 32 Q



FILED UNDER PROJECT <i>9131-03-70</i>			COUNTY CLERK'S OFFICE COUNTY OF <i>Forest</i> WISCONSIN } 85	
DISTRICT OFFICE NUMBER <i>03-07</i>	CITY <i>RHINELANDER</i>	COUNTY <i>ONEIDA</i>	DATE RECEIVED FOR RECORD <i>11/20/85</i>	DATE COPY SENT TO COUNTY SURVEYOR <i>N/A</i>
LOCATED OR ESTABLISHED BY NAME <i>J.R. WALLIN under the direction of MICHAEL HESS 2nd Surveyor 500809</i> TITLE <i>SURVEY CREW CHIEF</i> DATE <i>5-16-85</i>			SIGNATURE OF COUNTY CLERK <i>Dora C. James</i>	