

138172

## U. S. PUBLIC LAND SURVEY MONUMENT RECORD.

## INSTRUCTIONS:

This record shall show the location of the corner and shall include all of the following nine elements (a through i).

- (a) Identify the corner by reference to the U.S. public land survey system.

● = Corner monument restored.

Quarter Corner to Sections 5 & 8,  
T35N, R15E, 4th P.M.

REGISTER'S OFFICE  
Forest County, Wis.

Received for record this 16<sup>th</sup> day

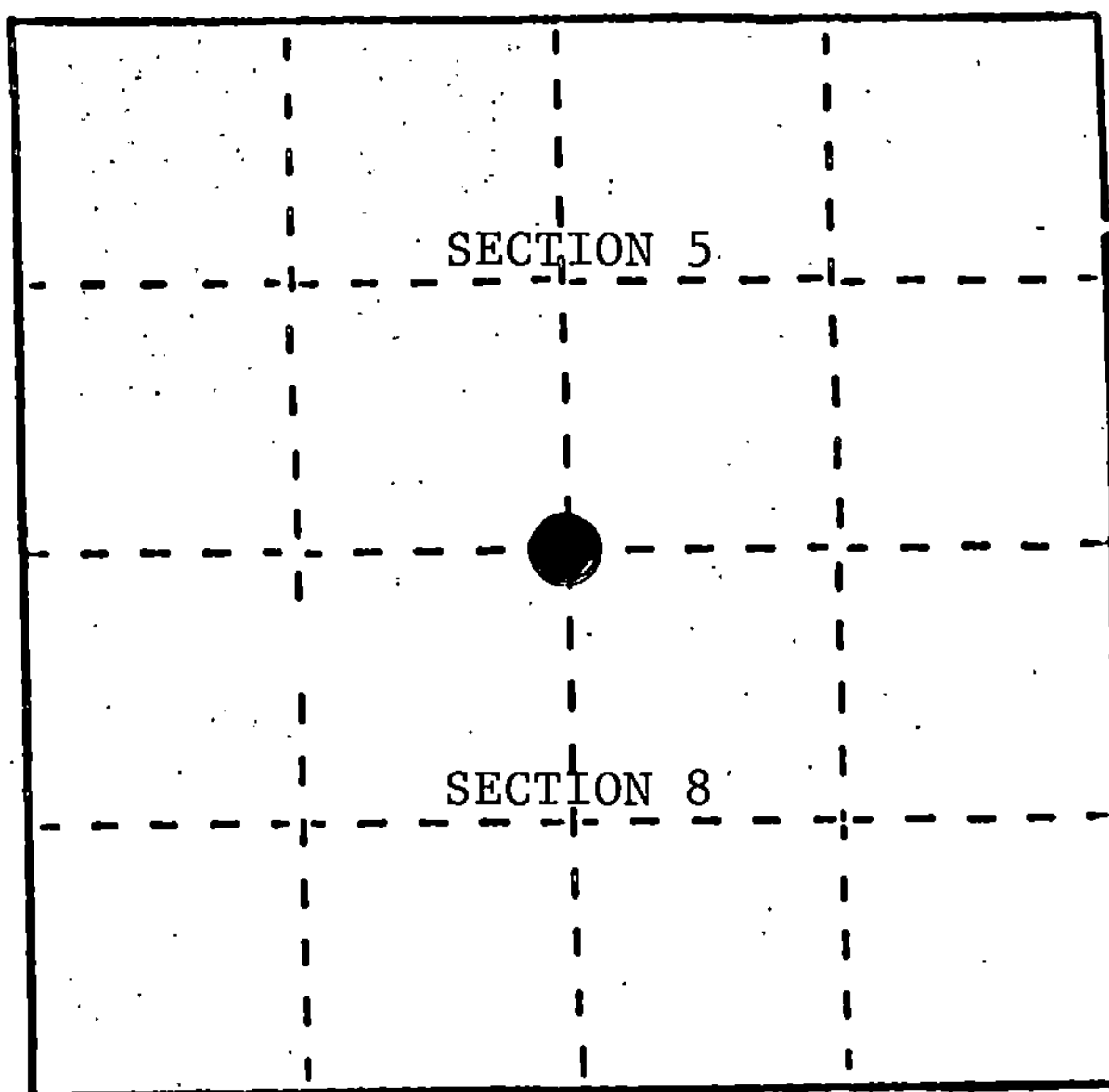
of Sept. A.D., 1989 at

10:25 o'clock A. M. and recorded

in Vol. CORNER RESTORATIONS

page E-7

Paul Achenbrenner  
Register of Deeds



- (b) Describe any record evidence, monument evidence, occupational evidence, testimonial evidence or any other material evidence you considered, and whether the monument was found or placed.

In 1859, James McBride established this corner and set a wood post and BTs:  
8" Hemlock, N17°E, 24 Links      6" Fir, S27°E, 41 Links

1973 - Thomas Arnott restored this corner by lost methods and placed a railroad spike in the road surface.

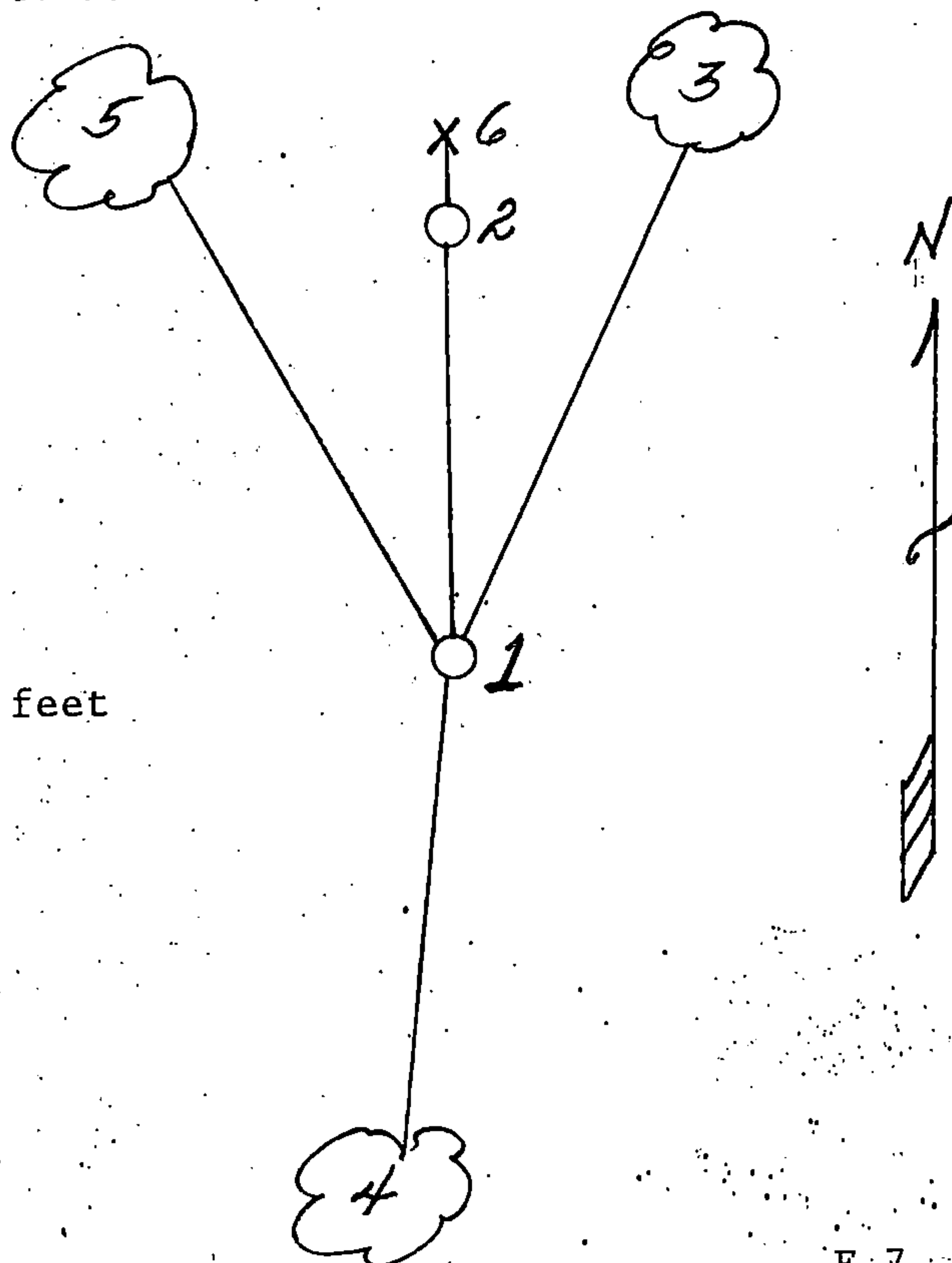
1982 - John Fisher used the Arnott corner to subdivide Section 5 for the Forest Service. He made bearing trees and established a Witness Corner N1°-40'W, 40.00 feet.

3/23/89 - I found corner in good condition needing no further work.

- (c) In the plan view drawing below, provide reference ties to at least 4 witness monuments, or, if the location is within a municipality, to at least 2 witness monuments. (Witness monuments shall be made of concrete, natural stone, iron or other equally durable material.) Describe witness monuments.

- (d) Show a plan view drawing depicting the relevant monuments and reference ties which is sufficient in detail to enable accurate relocation of the corner monument if the corner monument is disturbed. Indicate north.

- 1) Railroad spike
- 2) Witness Corner, N1°-40'W, 40.00'
- 3) 6" Cedar, N17°E, 45.61'
- 4) 5" Cedar, S2°W, 45.20'
- 5) 5" Cedar, N34°W, 47.81'
- 6) Steel sign post, N1°-40'W of W.C., 1.0 feet



43515050020

E-7

35-15

- (e) Describe any material discrepancy between the location of the corner as restored or reestablished and the location of that corner as previously restored or reestablished by distance and direction. Show the discrepancy on the plan view drawing under (d), above. Show the distances between the corner as previously restored or reestablished and (1) the corner as restored or reestablished, and (2) to at least 2 of the witness monuments shown on the drawing in (d), above.

None

- (f) Was the corner restored through acceptance of (1) an obliterated evidence location, or, (2) a found perpetuated location?

A perpetuated location

- (g&h) Was the corner reestablished through lost corner proportionate methods? If so, show the method, including the directions and distances to other public land survey corners used as evidence or used for proportioning in determining the corner location?

(i) I, Milo E. Stefan

(type or print name) certify that the corner location shown on this record was determined by me or under my direction and control and that this U.S. Public Land Survey Monument Record is correct and complete to the best of my knowledge and belief.

Milo E. Stefan  
Signature

July 8, 1989  
Date

CERTIFICATE READY FOR FILING:

Dale B. Staege  
District Ranger

Affix Land Surveyor Seal



Document Number  
210674

REGISTER'S OFFICE  
Forest County, Wis.  
Received for record this 5<sup>th</sup> day  
of December A.D., 2012 at  
10:00 o'clock A.M. and recorded  
in Vol. Corner Restoration  
page E-7  
Wm. M. Miller  
Register of Deeds

## U.S. PUBLIC LAND SURVEY MONUMENT RECORD

(As Required By s. A-E 7.08, WI Adm. Code)

History of original corner establishment and subsequent restorations and description of any record, monument, occupational, testimonial or other evidence considered:

- 1859 James McBride, Deputy Surveyor, established corner  
Tom Arnott sets railroad spike for corner ( no date )  
1982 John Fisher finds railroad spike in his survey of Section 5  
1989 Milo Steffan finds railroad spike in his survey of Section 8  
2000 Ayres Associates survey for County Highway H reconstruction and find  
County monument at corner location  
2012 H. Guy sets a PK nail for corner using Ayres Associates traverse  
through corner and corners East and West and makes new ties

Corner was: (Check All That Apply)

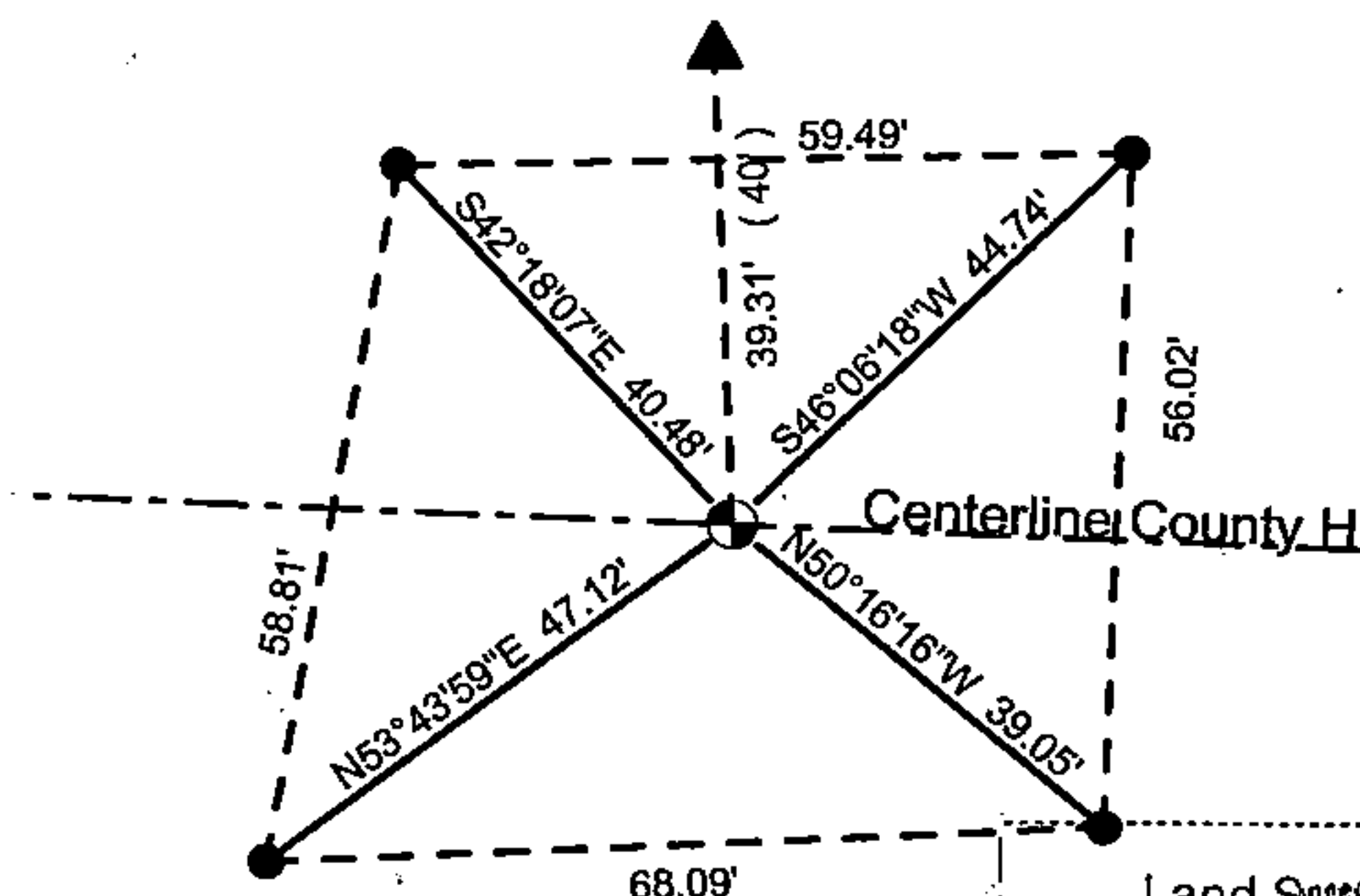
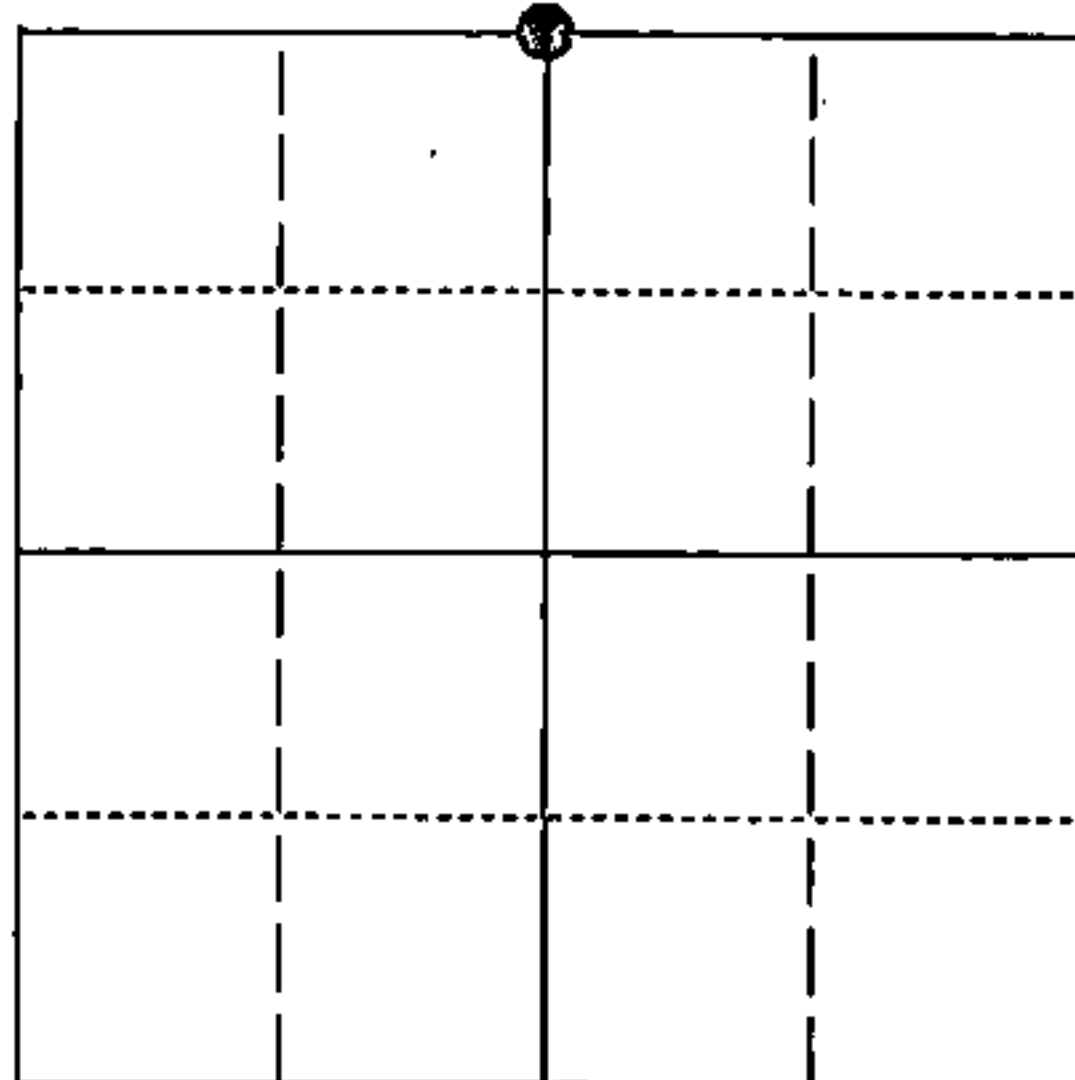
- ☒ Restored through acceptance of an obliterated evidence location  
☐ Restored through acceptance of a found perpetuated location  
☐ Considered a lost corner and reestablished through lost corner proportionate methods (include a plan view drawing showing distances and directions to other Public Land Survey Corners used for proportioning and determining the corner location)  
☐ Restored or reestablished in a location that differs from a previous restoration or reestablishment (include a plan view drawing and indicate what was set and/or found)

Describe the monument and accessories used to perpetuate the location of this corner. (include a plan view drawing and indicate what was set and/or found)

- ▲ 2" forest Service Monument  
● 5/8" x 24" iron rod set

SCALE 1" = 30'

The North 1/4  
corner of Section 8,  
T. 35 N., R. 15 E.,  
Fourth Principal Meridian,  
Marinette County, Wisconsin



● = Location of Corner

I, Hugh W. Guy Jr. RLS #1301  
(type or print name) certify that the corner location shown in this record was determined by  
me or under my direction and control and that this U.S. Public Land Survey Monument Record  
is correct and complete to the best of my knowledge and belief.

Signature

Date

11-10-2012

Index No. \_\_\_\_\_



43515050620

E-7