

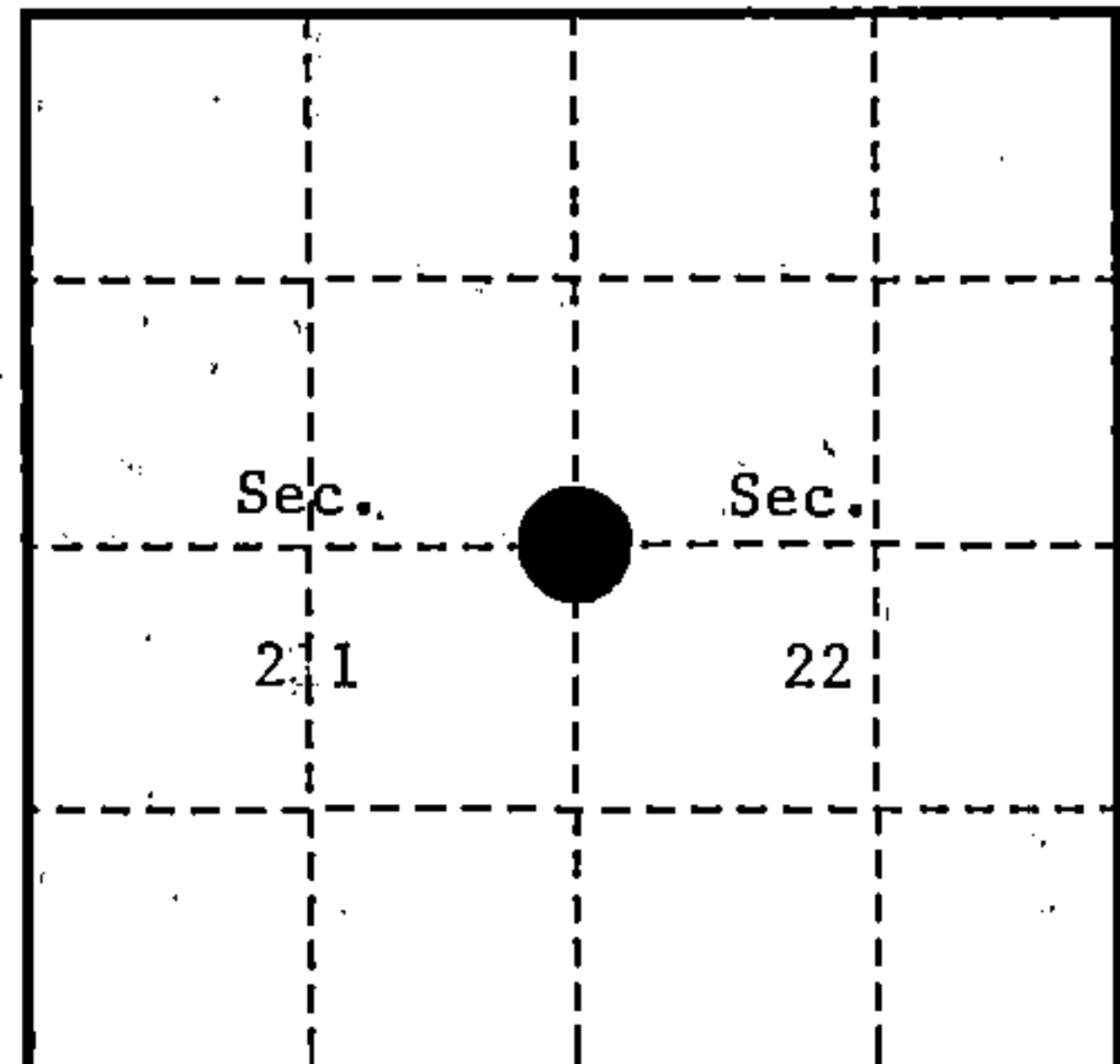
U. S. PUBLIC LAND SURVEY MONUMENT RECORD

INSTRUCTIONS:

This record shall show the location of the corner and shall include all of the following nine elements (a through i).

- (a) Identify the corner by reference to the U.S. public land survey system.
 ○ = Corner monument restored.

Quarter Corner to Sections 21 and 22,
 T.35N., R.15E., Forest County, Wisconsin.



- (b) Describe any record evidence, monument evidence, occupational evidence, testimonial evidence or any other material evidence you considered, and whether the monument was found or placed.

In 1859, James McBride set a wood post with the following BTs: Hemlock, 12", S.72°W., 14 links; Sugar, 12", N.65°E., 41 links.

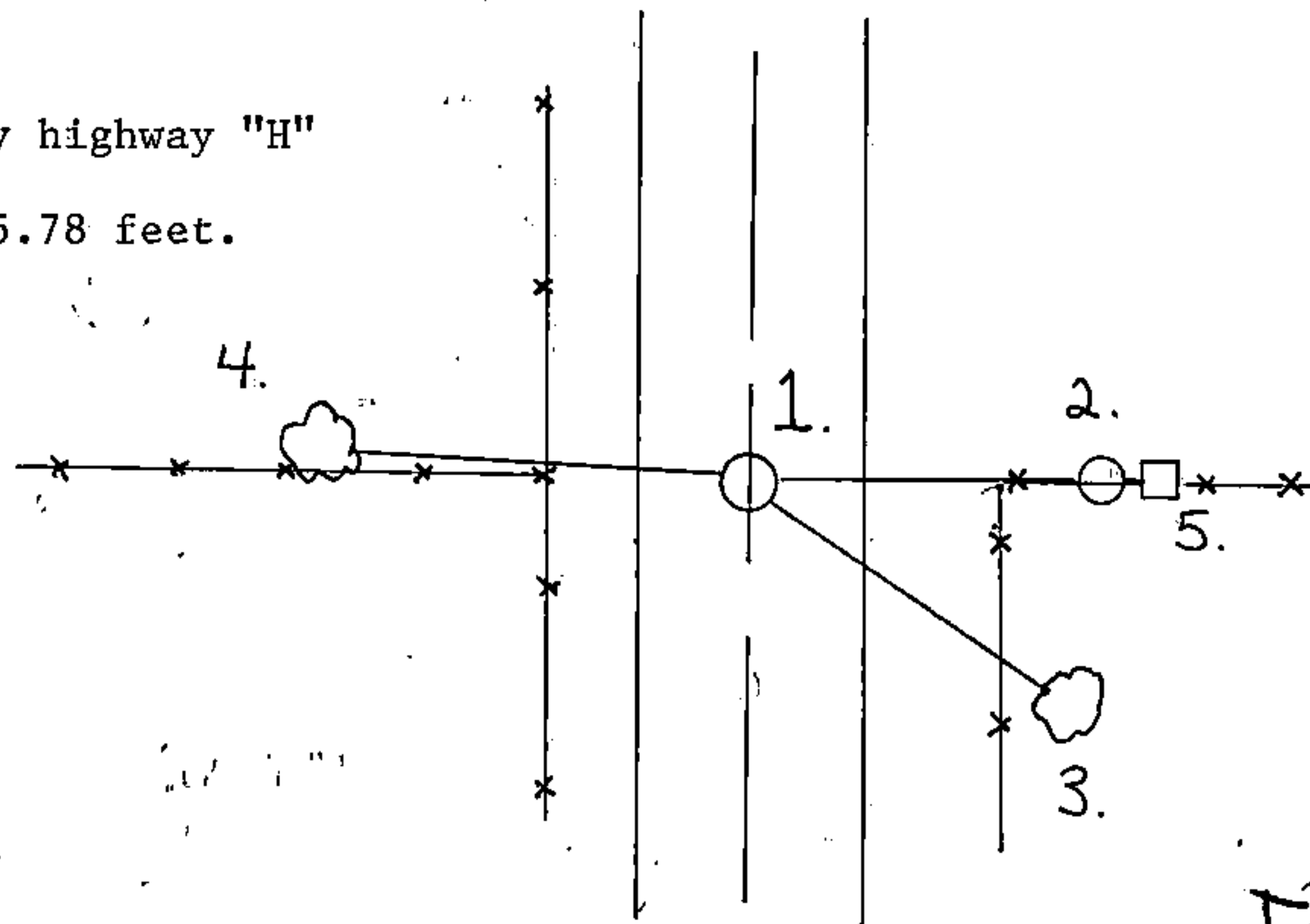
In 1908, N.H. Smith found original corner and original Sugar BT ok. Made the following BTs: Sugar, 20", N.36°W., 57 1/3 links; Sugar, 24", N.81 1/2°E., 44 links.

In 1991, Alan Harrison (R.L.S.) found very old fence lines running east and west with no original or subsequent corner evidence. Set corner position in centerline of county highway "H" at the intersection of the fence lines extended. This position fits the 1908 N.H. Smith survey and is accepted as the corner position.

- (c) In the plan view drawing below, provide reference ties to at least 4 witness monuments, or, if the location is within a municipality, to at least 2 witness monuments. (Witness monuments shall be made of concrete, natural stone, iron or other equally durable material.)

- (d) Show a plan view drawing depicting the relevant monuments and reference ties which is sufficient in detail to enable accurate relocation of the corner monument if the corner monument is disturbed. Indicate north.

1. Railroad spike in centerline of county highway "H" marking the corner location.
2. Witness Corner, 2 1/2" x 36", N.90°E., 45.78 feet.
3. Sugar, 7", S.51°E., 46.48 feet.
4. Sugar, 7", N.82°W., 68.88 feet.
5. Steel Sign Post, East, 46.74 feet.



REGISTER'S OFFICE
 Forest County, Wis.

Received for record this 13th day
 of May A.D., 1992 at
11:30 o'clock A.M. and recorded
 in Vol. 13 Restorations
 page 13

Paul Schoenberger
 Register of Deeds

(e) Describe any material discrepancy between the location of the corner as restored or reestablished and the location of that corner as previously restored or reestablished by distance and direction. Show the discrepancy on the plan view drawing under (d), above. Show the distances between the corner as previously restored or reestablished and (1) the corner as restored or reestablished, and (2) to at least 2 of the witness monuments shown on the drawing in (d), above.

None.

(f) Was the corner restored through acceptance of (1) an obliterated evidence location, or, (2) a found perpetuated location?

(1) An obliterated evidence location.

(g & h) Was the corner reestablished through lost corner proportionate methods? If so, show the method, including the directions and distances to other public land survey corners used as evidence or used for proportioning in determining the corner location?

No.

(1) I, Alan D. Harrison
(type or print name) certify that the corner location shown on this record was determined by me or under my direction and control and that this U.S. Public Land Survey Monument Record is correct and complete to the best of my knowledge and belief.

Alan D. Harrison

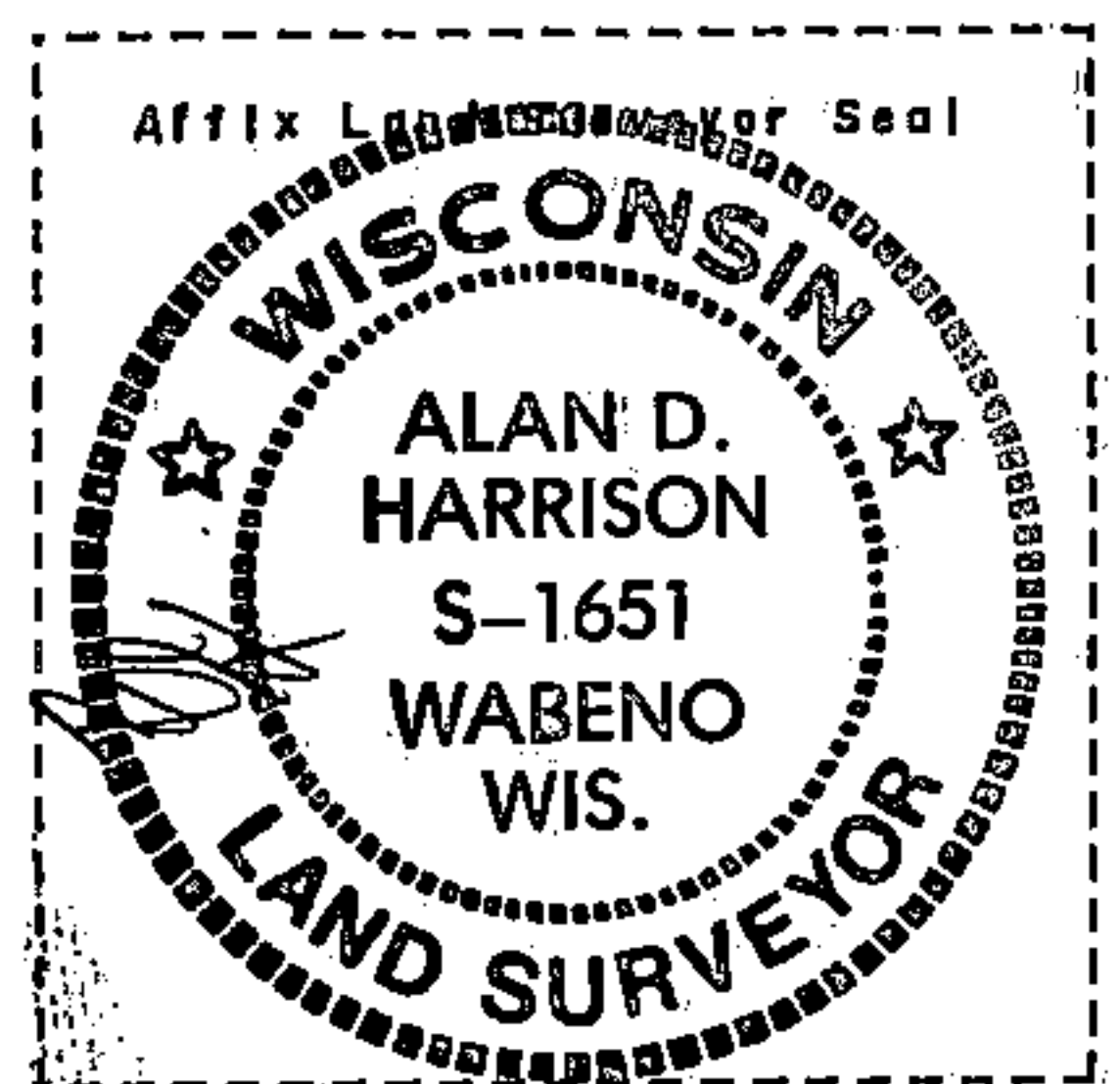
Signature

4/29/92

Date

CERTIFICATE READY FOR FILING:

Sue Vap
District Ranger



Document Number

191722

REGISTER'S OFFICE
Forest County, Wis.

Received for record this 3rd day
of AUGUST A.D., 2006 at
8:45 o'clock AM and recorded
in Vol. CORNER RESTORATIONS
page P-13

Paul Aschardinger
Register of Deeds

U.S. PUBLIC LAND SURVEY MONUMENT RECORD

(AS REQUIRED BY S. A-E 5.02, WI ADM. CODE)

HISTORY OF ORIGINAL CORNER ESTABLISHMENT AND SUBSEQUENT RESTORATIONS AND DESCRIPTION OF ANY RECORD, MONUMENT, OCCUPATIONAL, TESTIMONIAL, OR OTHER EVIDENCE CONSIDERED:

1859 - JAMES McBRIDE, SURVEYOR, SET POST

SET THE FOLLOWING WITNESSES:
HEMLOCK 12" S72°W 14 LINKS
SUGAR MAPLE 12" N65°E 41 LINKS

1908 - N.H. SMITH FOUND ORIGINAL CORNER AND ORIGINAL SUGAR BT OK.

SET THE FOLLOWING WITNESSES:
SUGAR MAPLE 20" N36°W 57-1/3 LINKS
SUGAR MAPLE 24" N81-1/4°E 44 LINKS

1991 - SURVEY MONUMENT RECORD DOC #144428, ALAN HARRISON, SURVEYOR, S-1651, FOUND VERY OLD FENCE LINES RUNNING EAST AND WEST WITH NO ORIGINAL OR SUBSEQUENT CORNER EVIDENCE. SET RAILROAD SPIKE AS CORNER LOCATION IN CENTERLINE OF COUNTY HIGHWAY "H" AT THE INTERSECTION OF THE FENCE LINES EXTENDED. THIS POSITION FITS THE 1908 N.H. SMITH SURVEY AND IS ACCEPTED AS THE CORNER POSITION.

SET THE FOLLOWING WITNESSES:
SUGAR MAPLE 7" S51°E 46.48 FEET
SUGAR MAPLE 7" N82°W 68.88 FEET
STEEL SIGN POST EAST 46.74 FEET
WITNESS CORNER, 2.5" x 36" N90°E 45.78 FEET

2005 - WISDOT PLANS 9334-02-00 SHOWS A FOUND NAIL.

CORNER WAS: (CHECK ALL THAT APPLY)

- ☐ RESTORED THROUGH ACCEPTANCE OF AN OBLITERATED LOCATION
☒ RESTORED THROUGH ACCEPTANCE OF A FOUND PERPETUATED LOCATION
☐ CONSIDERED A LOST CORNER AND REESTABLISHED THROUGH LOST CORNER PROPORTIONATE METHODS (INCLUDING A PLAN VIEW DRAWING SHOWING DISTANCES AND DIRECTIONS TO OTHER PUBLIC LAND SURVEY CORNERS USED FOR PROPORTIONING AND DETERMINING THE CORNER LOCATION)
☐ RESTORED OR REESTABLISHED IN A LOCATION THAT DIFFERS FROM A PREVIOUS RESTORATION OF REESTABLISHMENT (INCLUDE A PLAN VIEW DRAWING AND INDICATE WHAT WAS SET AND/OR FOUND)

DESCRIBE THE MONUMENT AND ACCESSORIES USED TO PERPETUATE THE LOCATION OF THIS CORNER. (INCLUDE A PLAN VIEW DRAWING AND INDICATE WHAT WAS SET AND/OR FOUND)

2006 - ZACHARY J. STEVENS, SURVEYOR, S-2467-008, FOUND MAG NAIL IN CENTERLINE OF BIT.

FOUND THE FOLLOWING WITNESSES:

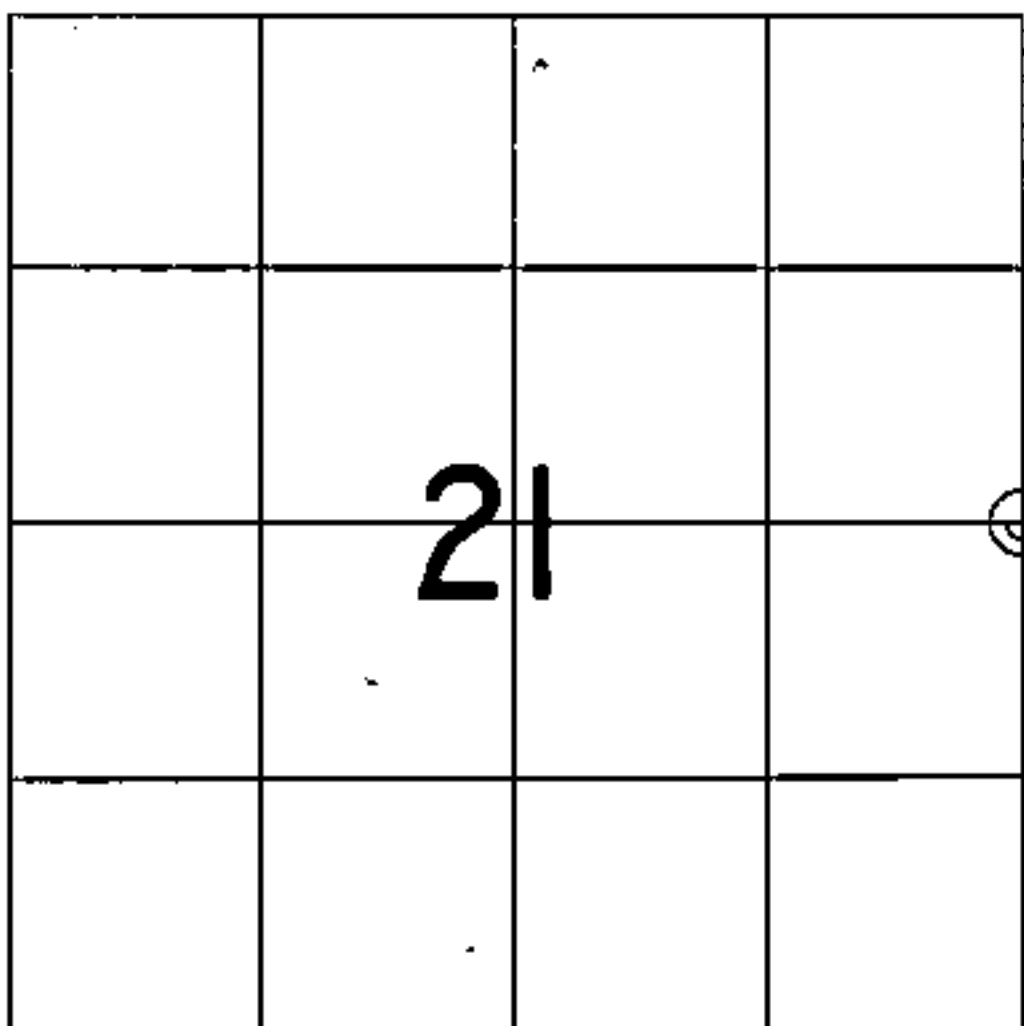
2.5" ALUMINUM WITNESS MONUMENT S86°E 45.75 FEET

WISDOT SET THE FOLLOWING WITNESSES:
Z. STEVENS MEASURED THE FOLLOWING:

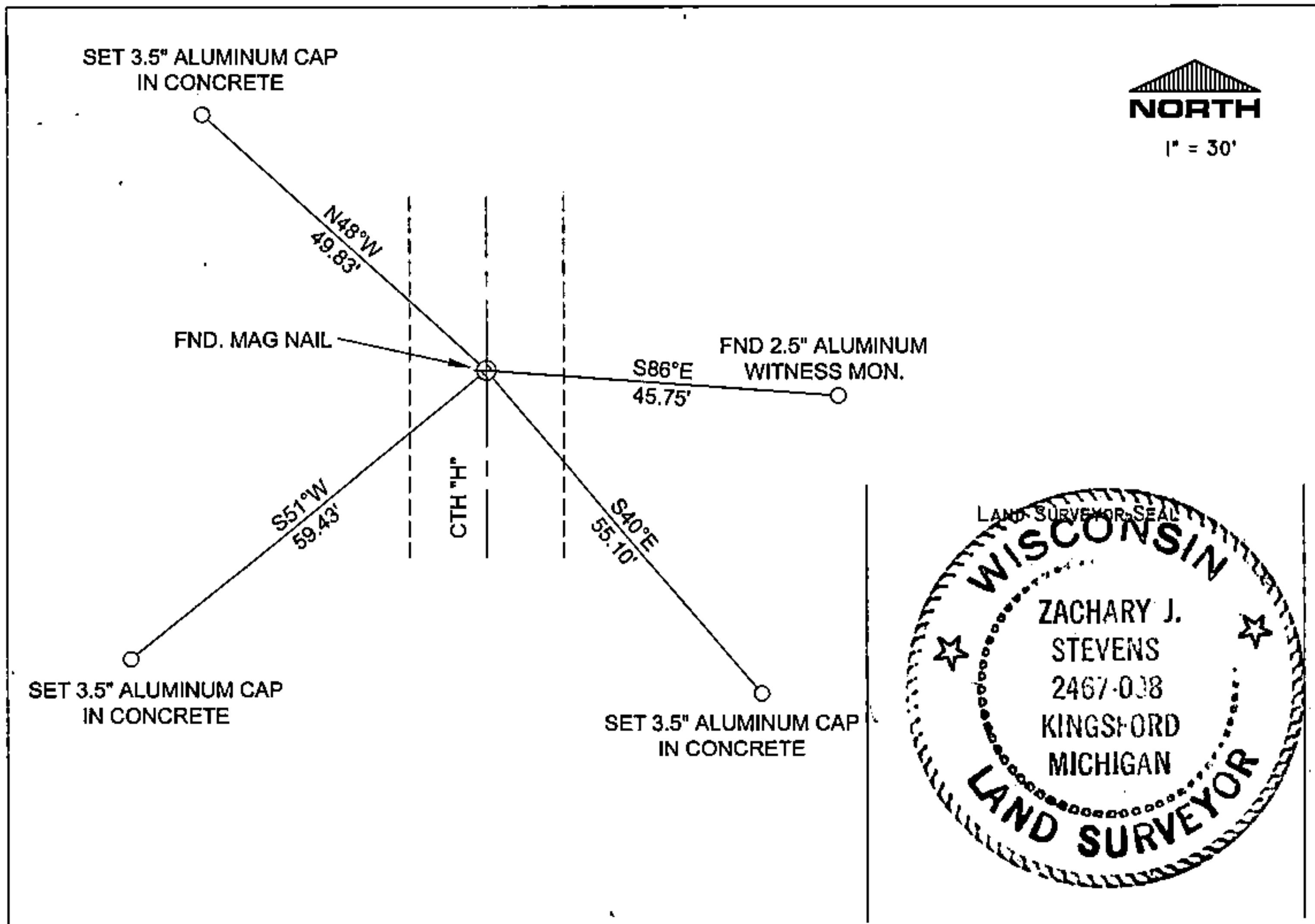
3.5" MONUMENT CAP IN CONCRETE N48°W 49.83 FEET
3.5" MONUMENT CAP IN CONCRETE S40°E 55.10 FEET
3.5" MONUMENT CAP IN CONCRETE S51°W 59.43 FEET

THE EAST 1/4

CORNER OF SECTION 21,
T. 35 N., R. 15 E.,
FOREST COUNTY, WISCONSIN



⊕ = LOCATION OF CORNER



I, ZACHARY J. STEVENS R.L.S. S-2467-008

(TYPE OR PRINT NAME) CERTIFY THAT THE CORNER LOCATION SHOWN ON THIS ABOVE RECORD WAS DETERMINED BY ME OR UNDER MY DIRECTION AND CONTROL AND THAT THIS U.S. PUBLIC LAND SURVEY MONUMENT RECORD IS CORRECT AND COMPLETE TO THE BEST OF MY KNOWLEDGE AND BELIEF.

INDEX No. P-13

SIGNATURE

Zachary J. Stevens 7/31/06
DATE

43515212000

P-13