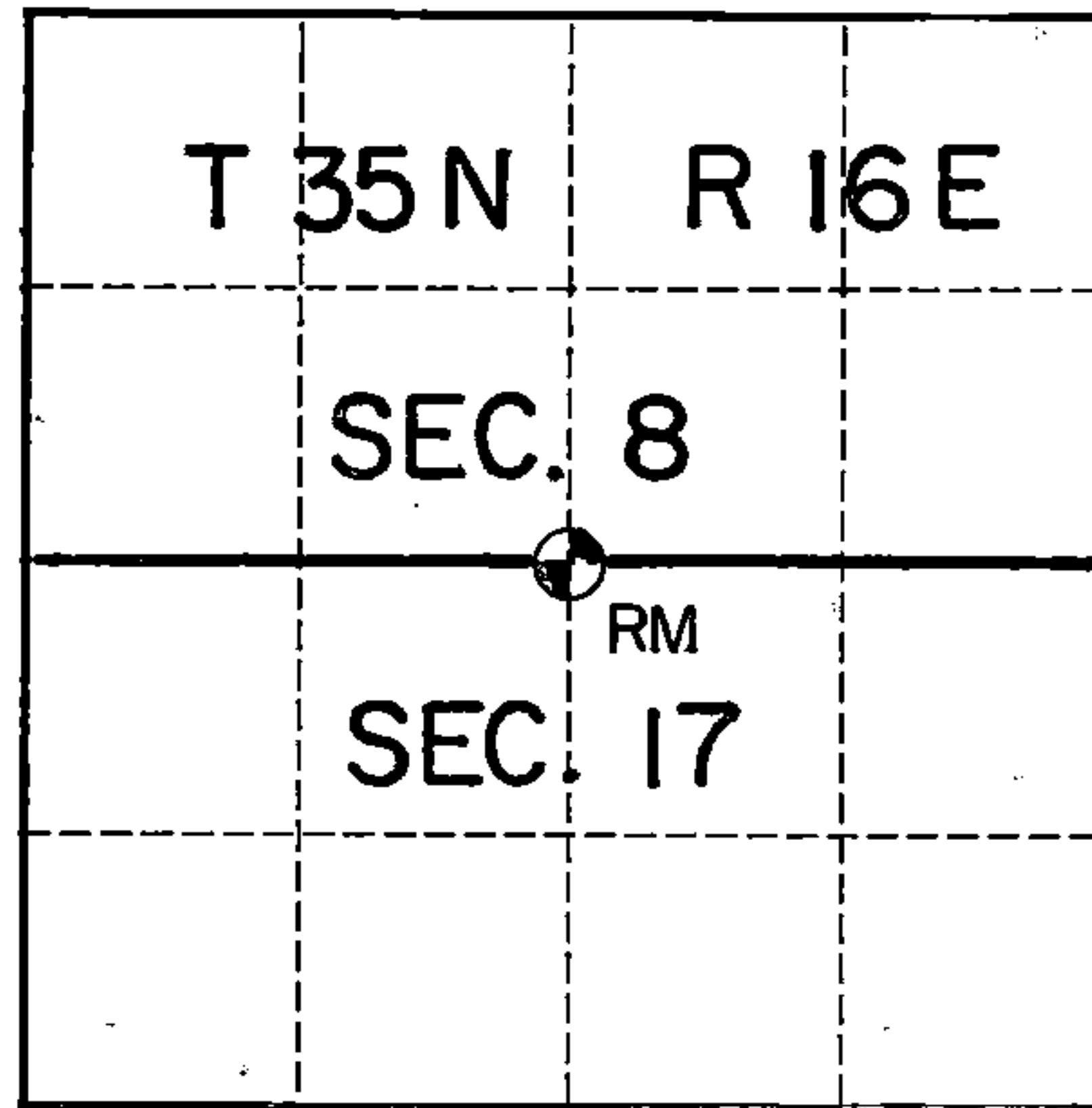


U. S. PUBLIC LAND SURVEY MONUMENT RECORD

INDEX NO. J-7

Quarter _____ Corner to Section 8 17 T35 N, R16 E
(Section/Quarter)



Show distances and bearings if set by proportional measurement.

○ = Corner monument restored.



Set a railroad spike at the corner location with a 2"x 36" aluminum post with cap stamped Reference Monument as shown. Measurements are to aluminum nails driven into tree centers which trees were scribed and blazed. Bearings are magnetic

History of original corner establishment, record evidence, monument evidence, occupational evidence, testimonial evidence or any other material evidence, and what you found and how the monument was set.

In 1858 James McBride, contract surveyor, set this corner position using the following bearing trees:

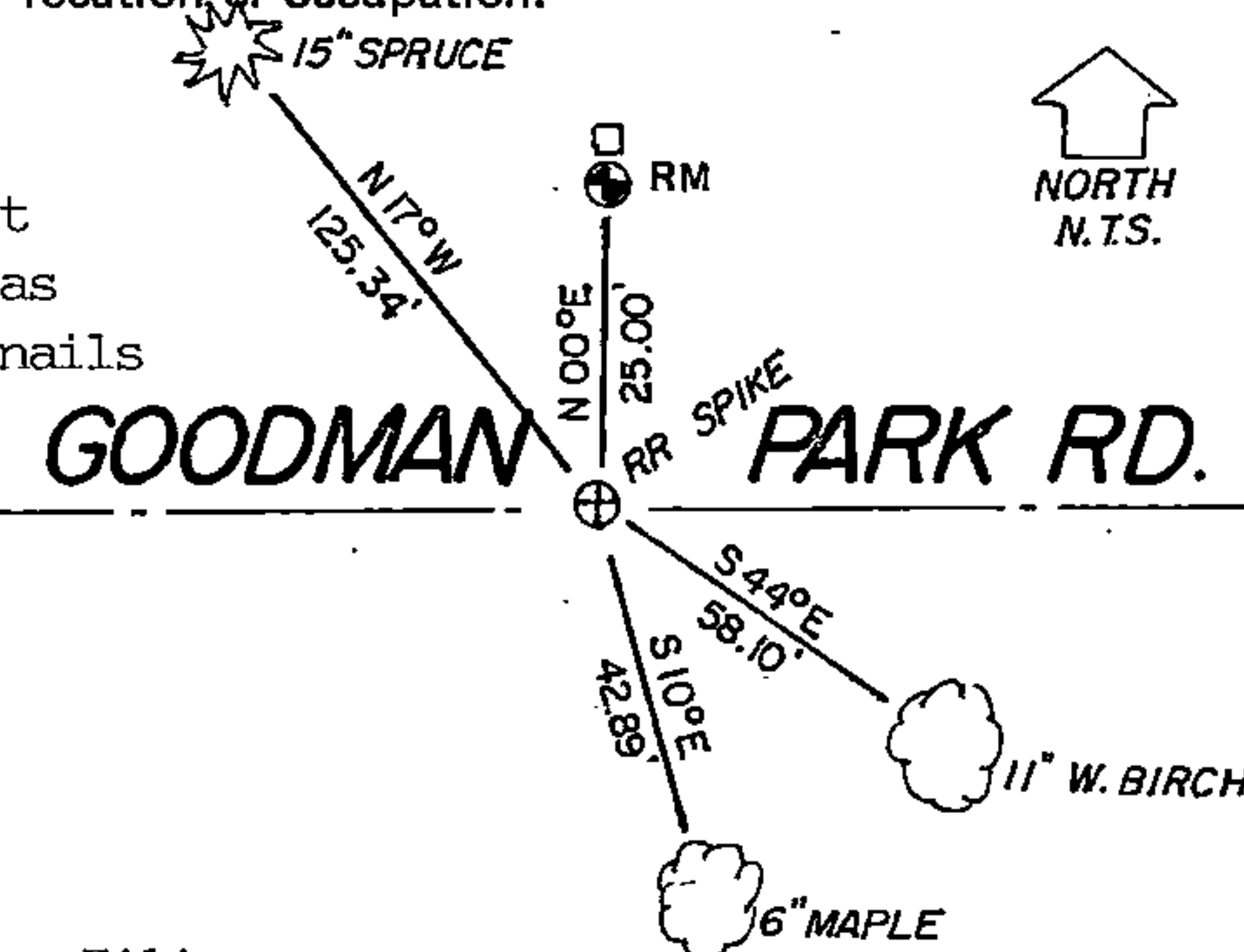
Hemlock 24" N10W 31

Hemlock 18" S46E 43

At 37.50 chains running west corrected a stream call fell running south

Located the centerline of Goodman Park Road and the stream which had been diverted from road construction and did not fit the call distances. There was no evidence of occupation at this corner other than the road centerline. I set this corner in the road centerline at single proportionate distance between the south section corners of section 8.

In the plan view drawing below, provide reference ties to at least 4 witness monuments, or, if the location is within a municipality, to at least 2 witness monuments. (Witness monuments shall be made of concrete, natural stone, iron or other equally durable material, except wood other than bearing trees.) Also, show any material discrepancies between the corner restored or re-established and the location of any other previous corner location or occupation.



I, Kim H Pritzlaff, RLS No. 1259
(Type or print name) certify that the corner location shown on this record was determined by me or under my direction and control and that this U.S. Public Land Survey Monument Record is correct and complete to the best of my knowledge and belief.

Kim Pritzlaff
Signature

1993
Date

Certificate Ready For Filing:

Ralph Williams
District Ranger

149055

43516080020

INDEX NO. _____

MAINTENANCE RECORD

Condition of Monument _____

Condition of Ties _____

New Ties, if any:

Date

Signature

Condition of Monument _____

Condition of Ties _____

New Ties, if any:

Date

Signature

Condition of Monument _____

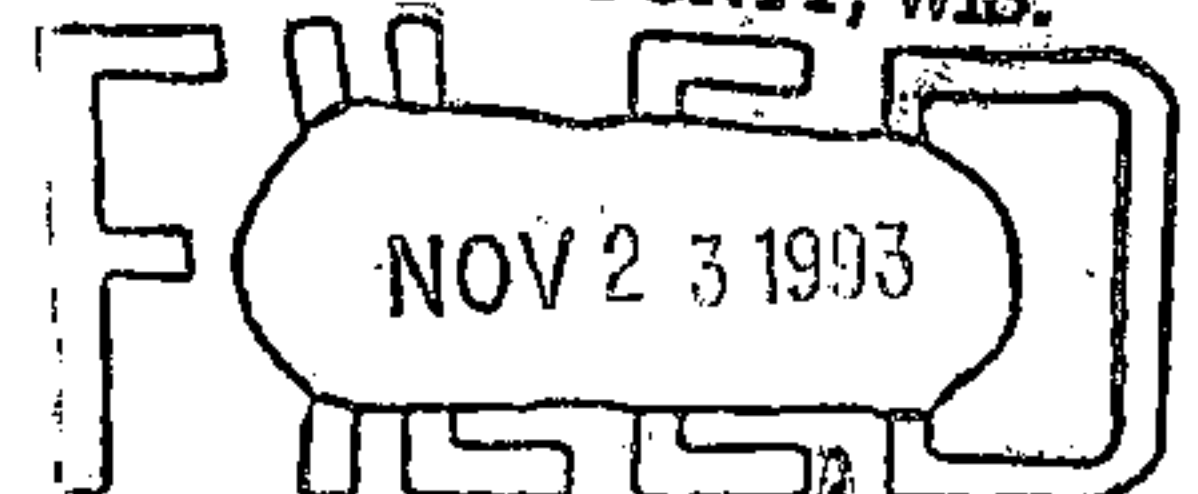
Condition of Ties _____

New Ties, if any:

Date

Signature

REGISTER'S OFFICE
FOREST COUNTY, WIS.



At 9 O'clock A.M.
Paul A. [Signature] Register of Deeds