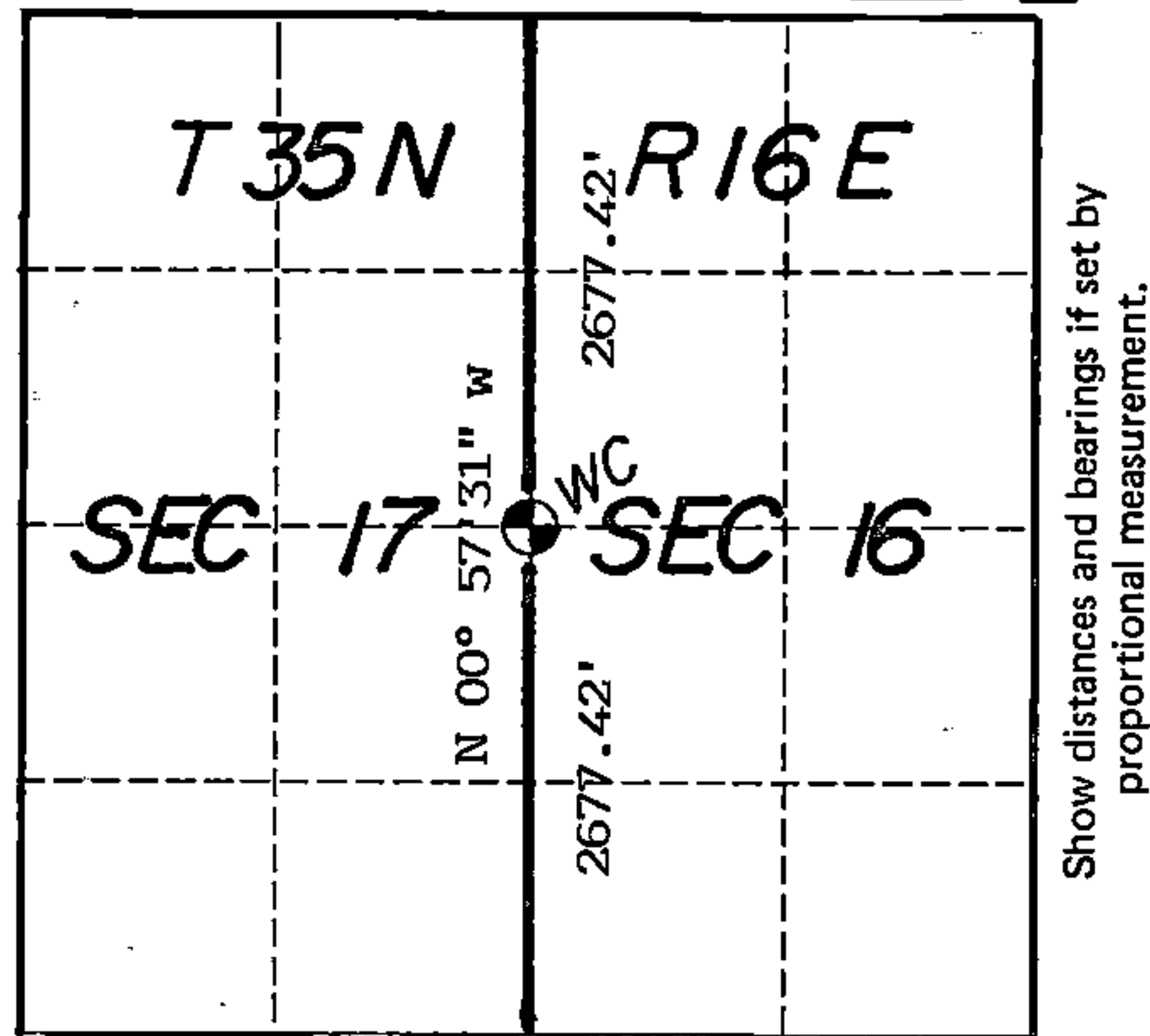


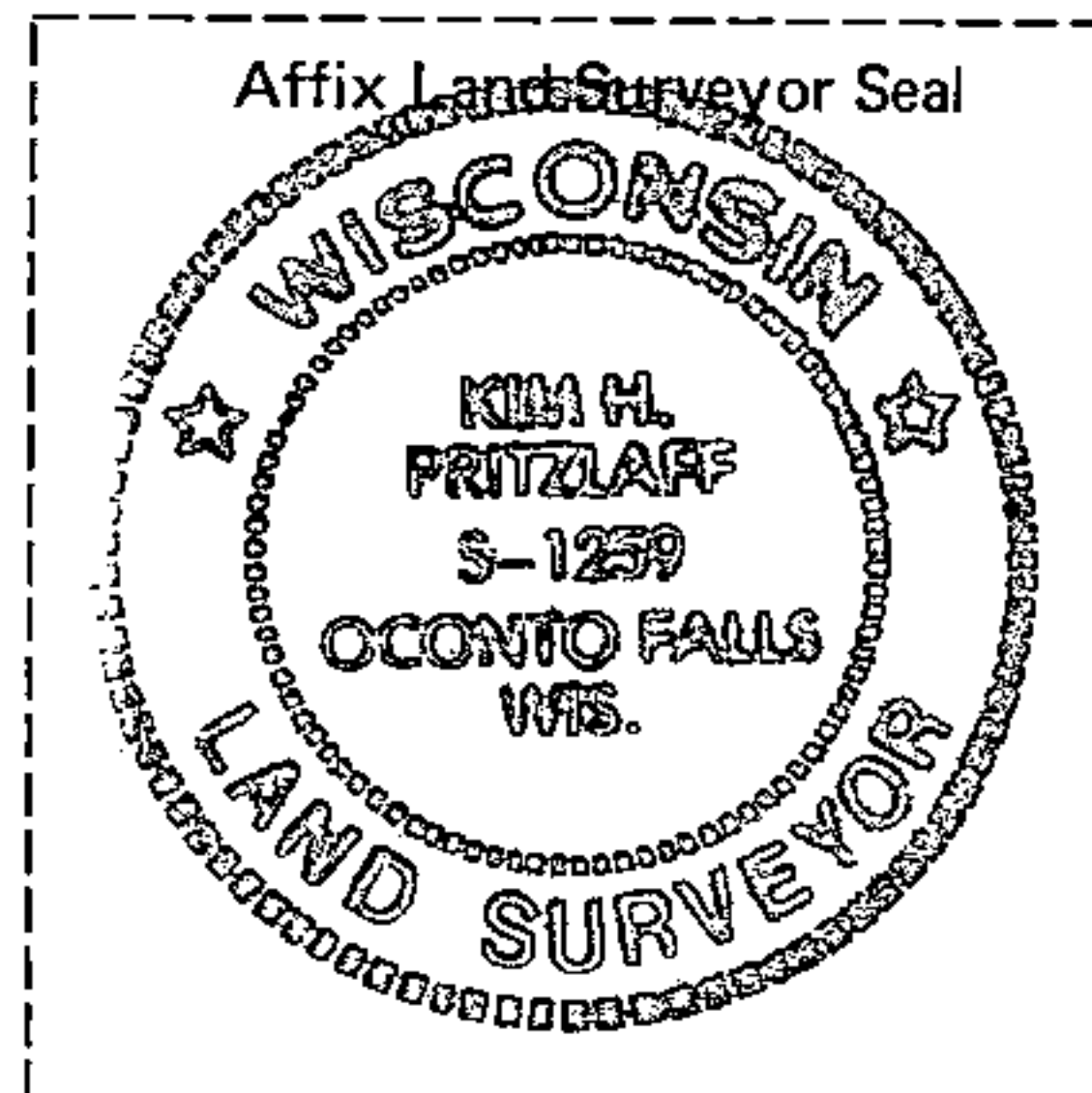
U. S. PUBLIC LAND SURVEY MONUMENT RECORD

INDEX NO. L-9

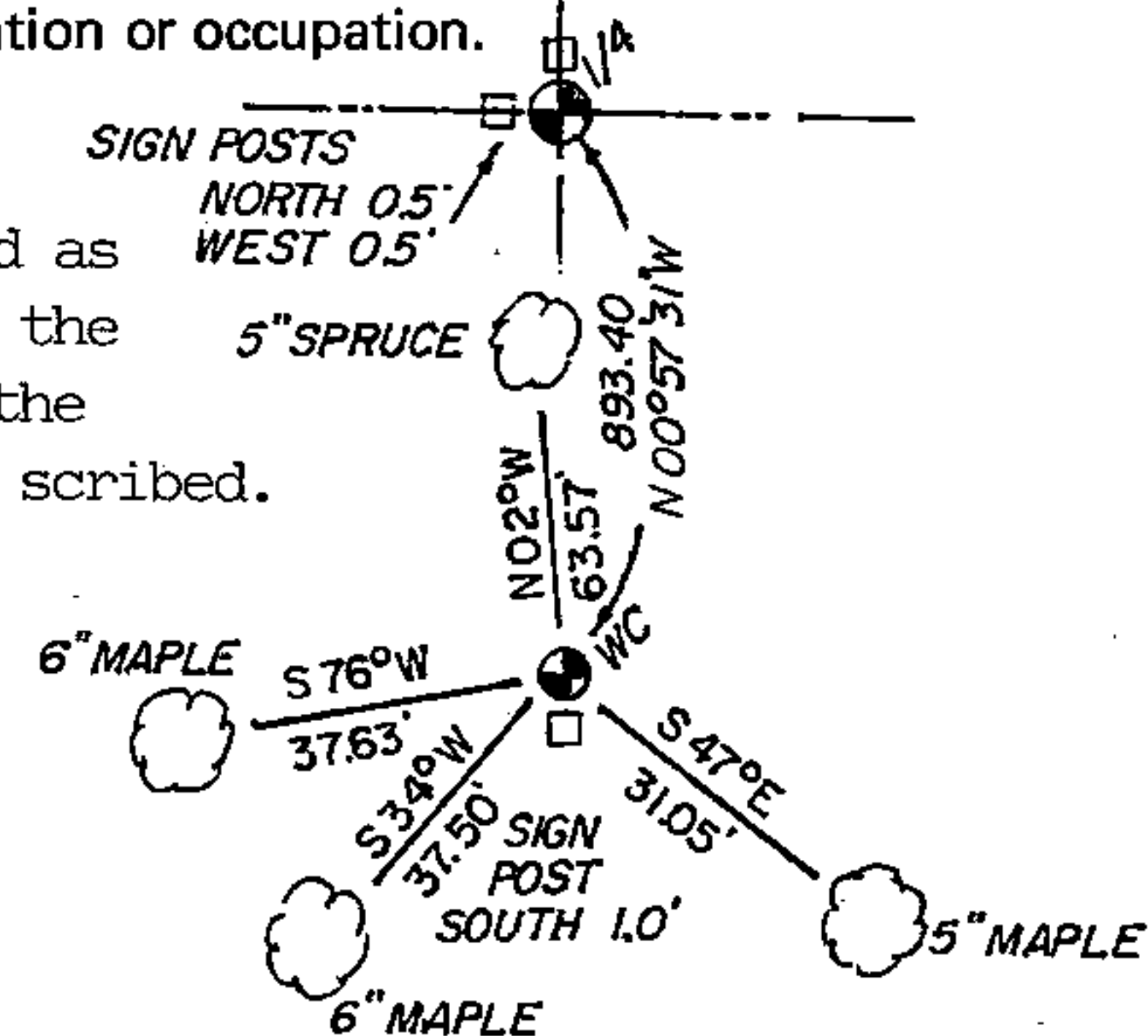
Quarter _____ Corner to Section 16 17 T 35 N, R 16 E
(Section/Quarter)



○ = Corner monument restored.



Set 2"x 60" aluminum post stamped for corner with 2"x 60" aluminum post stamped as Witness Corner 893.40 ft. south. Ties to the Witness Corner are to aluminum nails in the tree centers which trees were blazed and scribed. Bearings are magnetic



History of original corner establishment, record evidence, monument evidence, occupational evidence, testimonial evidence or any other material evidence, and what you found and how the monument was set.

In 1858 James McBride set this corner position at 40 chains with the following bearing trees:

Tamarack	8"	S88W	7
Tamarack	8"	S52E	11

In CCC notes, R. Reineke found a wood post with 14" Spruce BT N52E for 31 links and placed a metal tag on a 5" Yellow Birch S13W for 9 links.

Both the Tamarack BTs and metal tag on the yellow birch gave a lot of promise for corner evidence location. Beavers had, however, severely flooded and damaged the area in a radius of over 1000 feet. All Yellow Birch stumps were located in the area that were above water for metal tag evidence but none was found. After several man hours of search on different occasions I determined the corner to be lost and set it at single proportionate measure with Witness Monuments South and West.

In the plan view drawing below, provide reference ties to at least 4 witness monuments, or, if the location is within a municipality, to at least 2 witness monuments. (Witness monuments shall be made of concrete, natural stone, iron or other equally durable material, except wood other than bearing trees.) Also, show any material discrepancies between the corner restored or re-established and the location of any other previous corner location or occupation.

I, Kim H Pritzlaff, RLS No.1259

(Type or print name) certify that the corner location shown on this record was determined by me or under my direction and control and that this U.S. Public Land Survey Monument Record is correct and complete to the best of my knowledge and belief.

Kim Pritzlaff
Signature

1993
Date

Certificate Ready For Filing:

Ralph [Signature]
District Ranger

149060

43516172000

INDEX NO. _____

MAINTENANCE RECORD

Condition of Monument _____

Condition of Ties _____

New Ties, if any:

Date

Signature

Condition of Monument _____

Condition of Ties _____

New Ties, if any:

Date

Signature

Condition of Monument _____

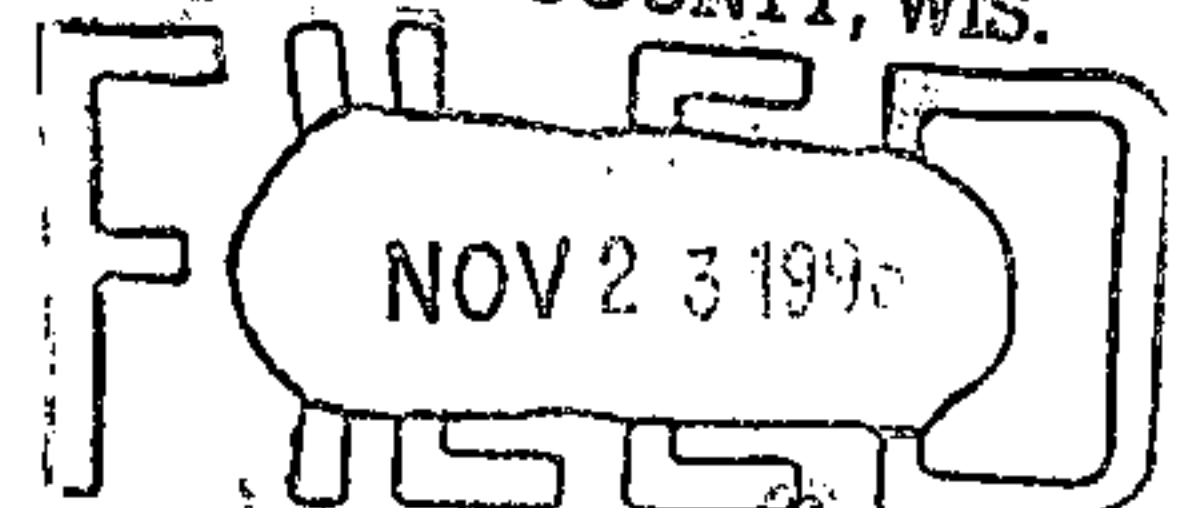
Condition of Ties _____

New Ties, if any:

Date

Signature

REGISTER'S OFFICE
FOREST COUNTY, WIS.

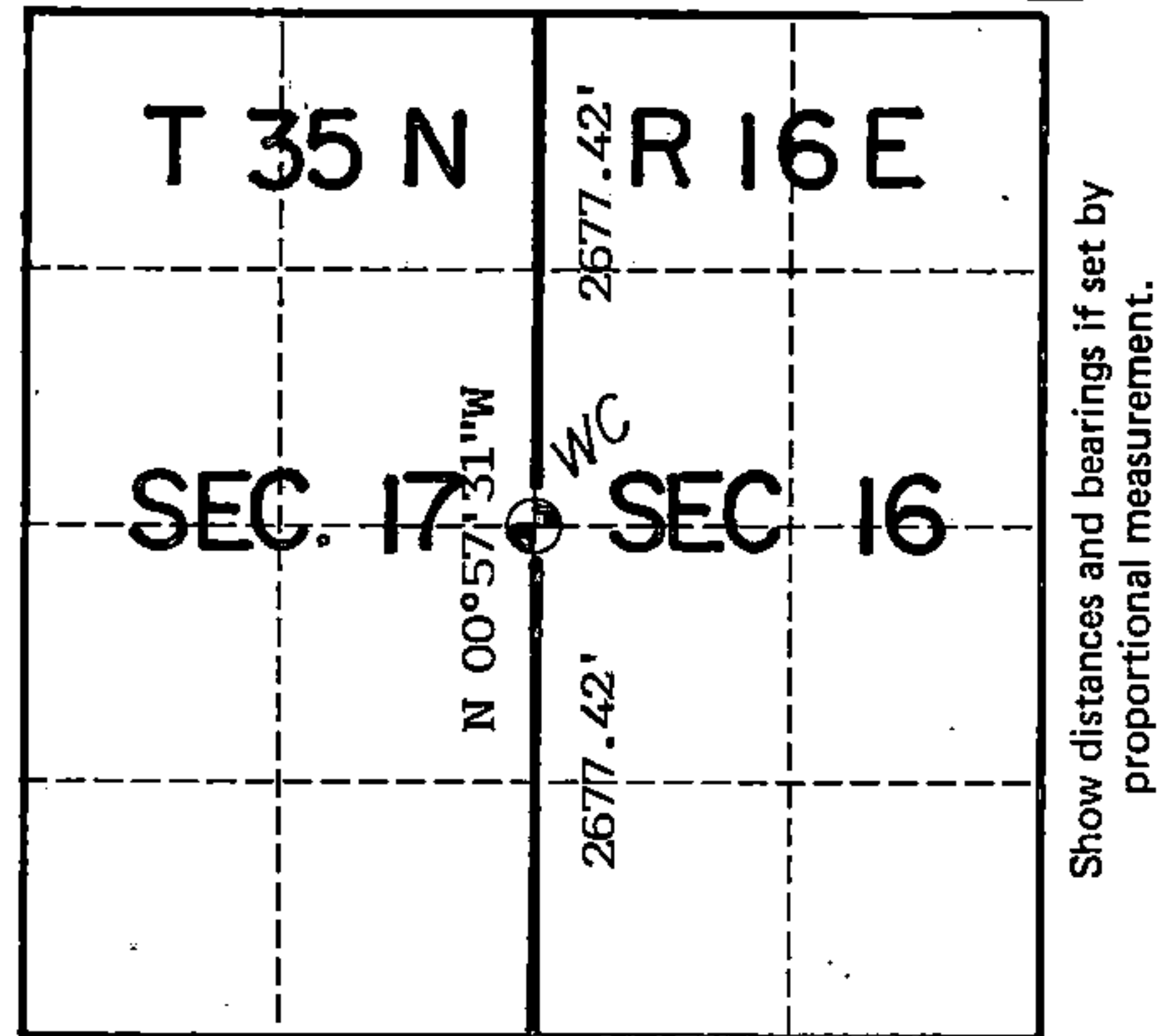


At 9 O'clock PM M.
Paul A. [Signature] Register of Deeds

U. S. PUBLIC LAND SURVEY MONUMENT RECORD

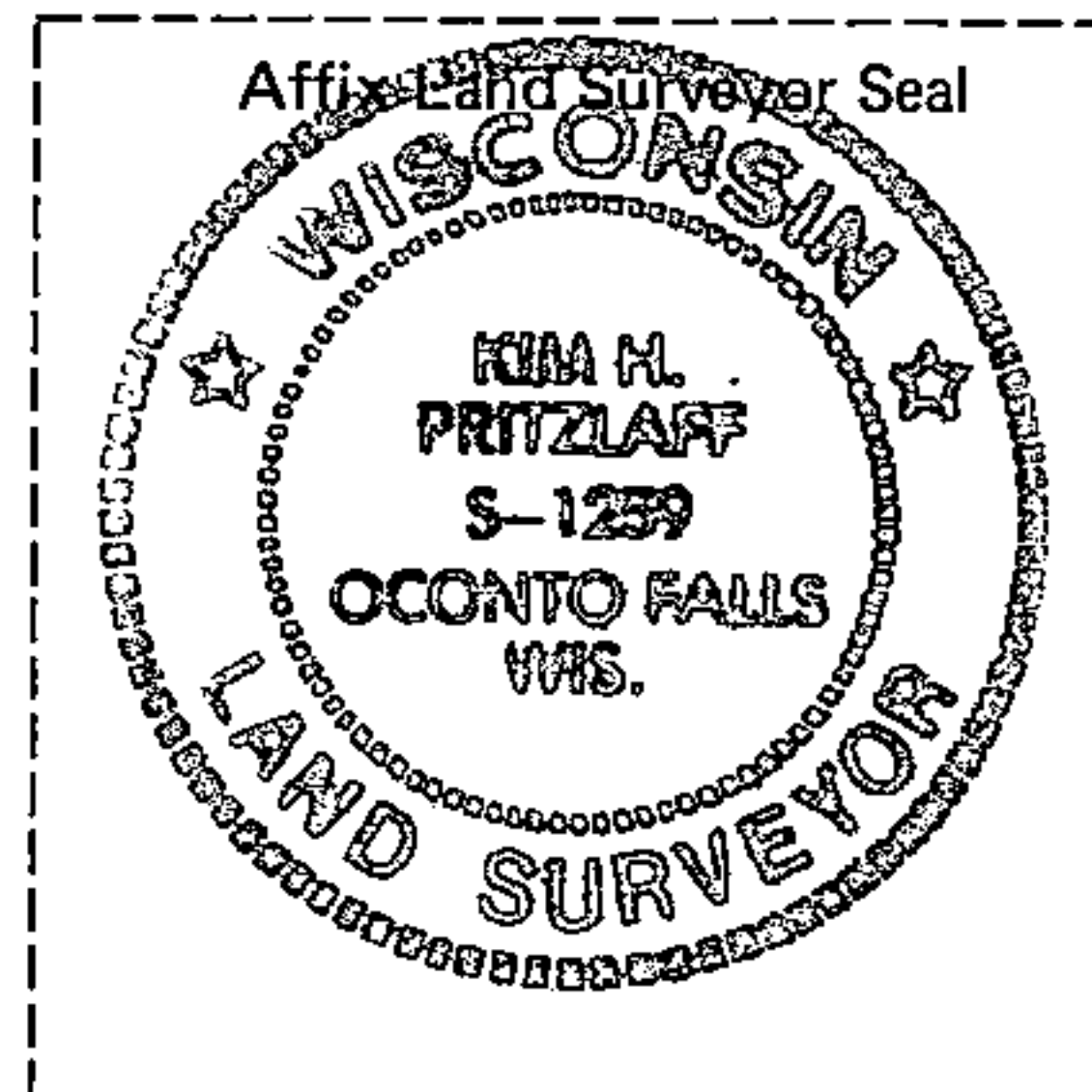
INDEX NO. L-9

Quarter _____ Corner to Section 16 17 T 35N, R 16E
(Section/Quarter)

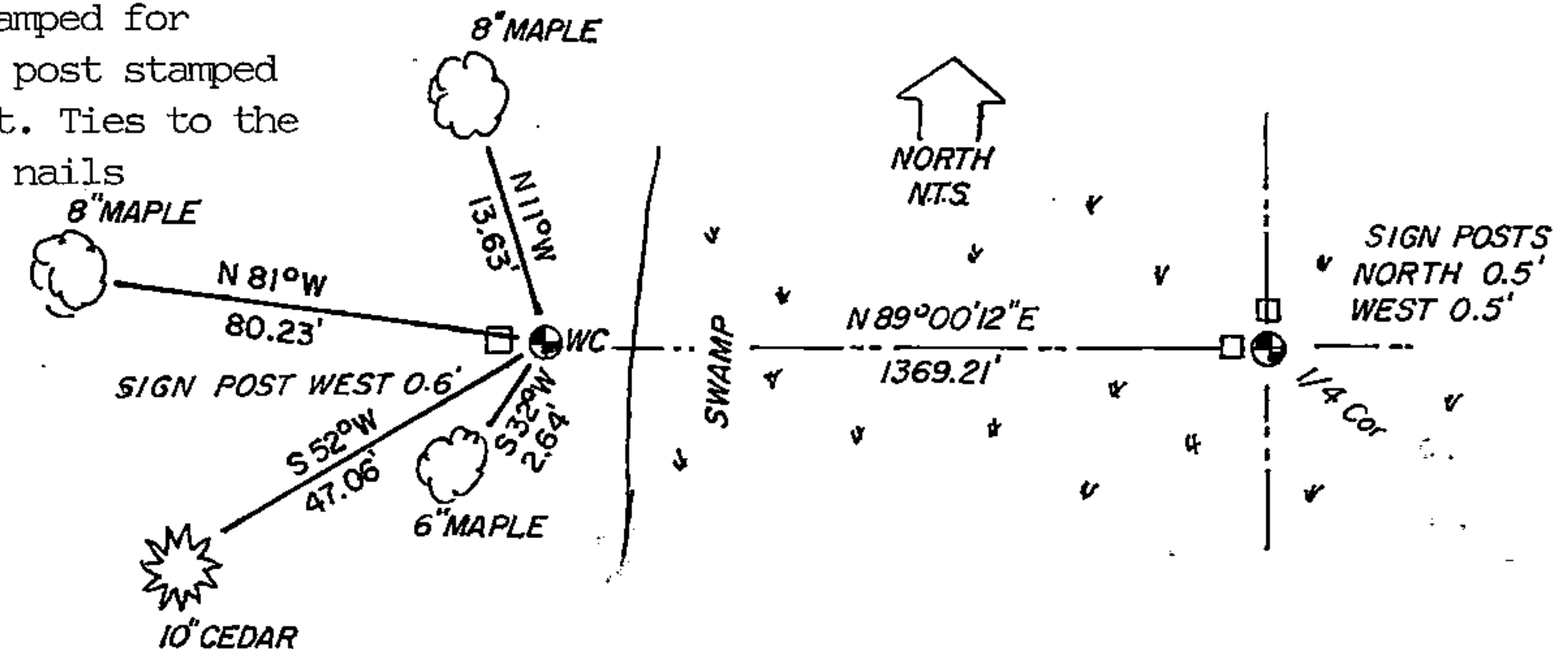


Show distances and bearings if set by proportional measurement.

○ = Corner monument restored.



Set a 2"x 60" aluminum post stamped for corner with a 2"x 36" aluminum post stamped Witness Corner 1369.21 ft. west. Ties to the Witness Corner are to aluminum nails in the tree centers which trees were blazed and scribed. Bearings are magnetic.



History of original corner establishment, record evidence, monument evidence, occupational evidence, testimonial evidence or any other material evidence, and what you found and how the monument was set.

In 1858 James McBride, contract surveyor, set a wood post at 40 chains with the following bearing trees:

Tamarack	8"	S88W	7
Tamarack	8"	S52E	11

In CCC notes, R. Rieneke found a wood post with a 14" Spruce BT N52E for 31 links and placed a metal tag on a 5" Yellow Birch S13W for 9 links.

Both of the Tamarack trees and the yellow birch with metal tag made the search for this corner worth while. Beavers, however, had severely damaged the area flooding lands with over a 1000 ft. radius killing every tree in their path. After several trips to the site and many man hours of search in the water and muck proved unsuccessful, I determined the corner lost and set it at single proportionate measure.

In the plan view drawing below, provide reference ties to at least 4 witness monuments, or, if the location is within a municipality, to at least 2 witness monuments. (Witness monuments shall be made of concrete, natural stone, iron or other equally durable material, except wood other than bearing trees.) Also, show any material discrepancies between the corner restored or re-established and the location of any other previous corner location or occupation.

I, Kim H Pritzlaff, RLS No. 1259
(Type or print name) certify that the corner location shown on this record was determined by me or under my direction and control and that this U.S. Public Land Survey Monument Record is correct and complete to the best of my knowledge and belief.

Kim Pritzlaff
Signature

1993
Date

Certificate Ready For Filing:

Ralph Bell
District Ranger

149059

43516172000

INDEX NO. _____

MAINTENANCE RECORD

Condition of Monument _____

Condition of Ties _____

New Ties, if any:

_____ Date

_____ Signature

Condition of Monument _____

Condition of Ties _____

New Ties, if any:

_____ Date

_____ Signature

Condition of Monument _____

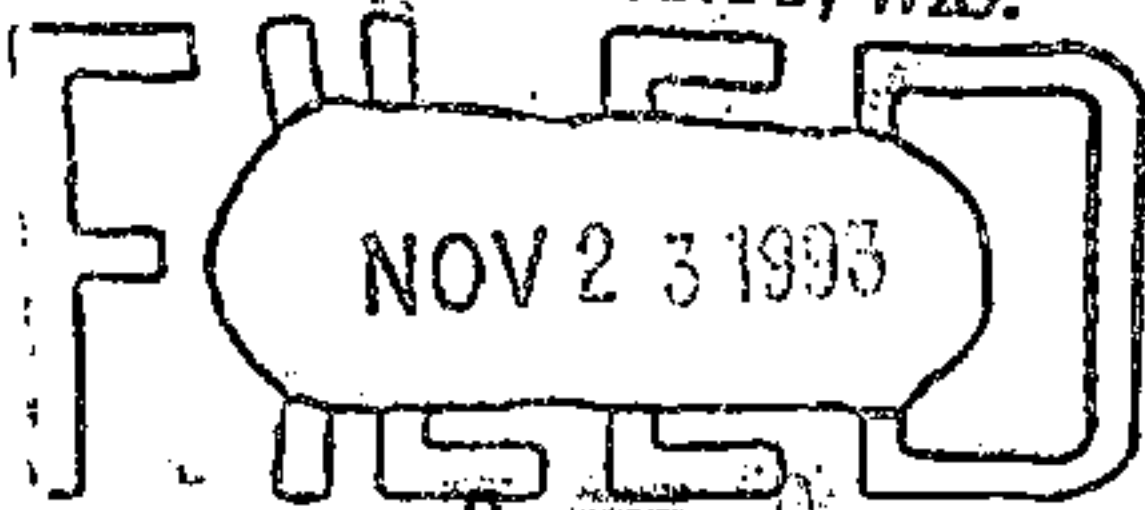
Condition of Ties _____

New Ties, if any:

_____ Date

_____ Signature

REGISTER'S OFFICE
FOREST COUNTY, WIS.



Paul A. Schumacher

Register of Deeds