

Document Number
203102

REGISTER'S OFFICE
Forest County, Wis.

Received for record this 20th day
of April A.D., 2010 at
1:00 o'clock P.M. and recorded
in Vol. COGNATE RESTORATIONS
page J-25

Paul H. Schaeffer
Register of Deeds

U.S. PUBLIC LAND SURVEY MONUMENT RECORD

(As Required by WI Adm. Code)

History of original corner establishment and subsequent restorations and descriptions of any record, monument, occupational, testimonial or other evidence considered:

1858 - Alfred Millard, set original corner post and made the following B.T.'s:

Spruce, 5", N 01° E, 32 lks., 21.12 feet.
Spruce, 5", N 30° W, 24 lks., 15.84 feet.

1919 - I.R. Ritter, set an iron pipe at the section corner position and made the following B.T.'s:

Spruce, 4", N 50° E, 15 lks., 9.90 feet.
Spruce, 4", S 85° W, 24 lks., 15.84 feet.

2009 - I found Ritter's 1 1/4" iron pipe below surface of swamp in fair condition.

I placed a 1" X 40" iron pipe inside found iron pipe and made the following new B.T.'s:

B. Spruce, 4", N 47° E, 20.09 feet B. Spruce, 5", N 62° W, 13.75 feet
B. Spruce, 4", S 09° W, 14.99 feet B. Spruce, 5", N 38° W, 12.06 feet

Corner was: (Check All That Apply)

- ☐ Restored through acceptance of an obliterated evidence location.
☒ Restored through acceptance of a found perpetuated location.
☐ Considered a lost corner and reestablished through lost corner proportionate methods (include a plan view drawing showing distances and directions to other Public Land Survey Corners used for proportioning and determining the corner location).
☐ Restored or reestablished in a location that differs from a previous restoration or reestablishment (include a plan view drawing and indicate what was set and/or found).

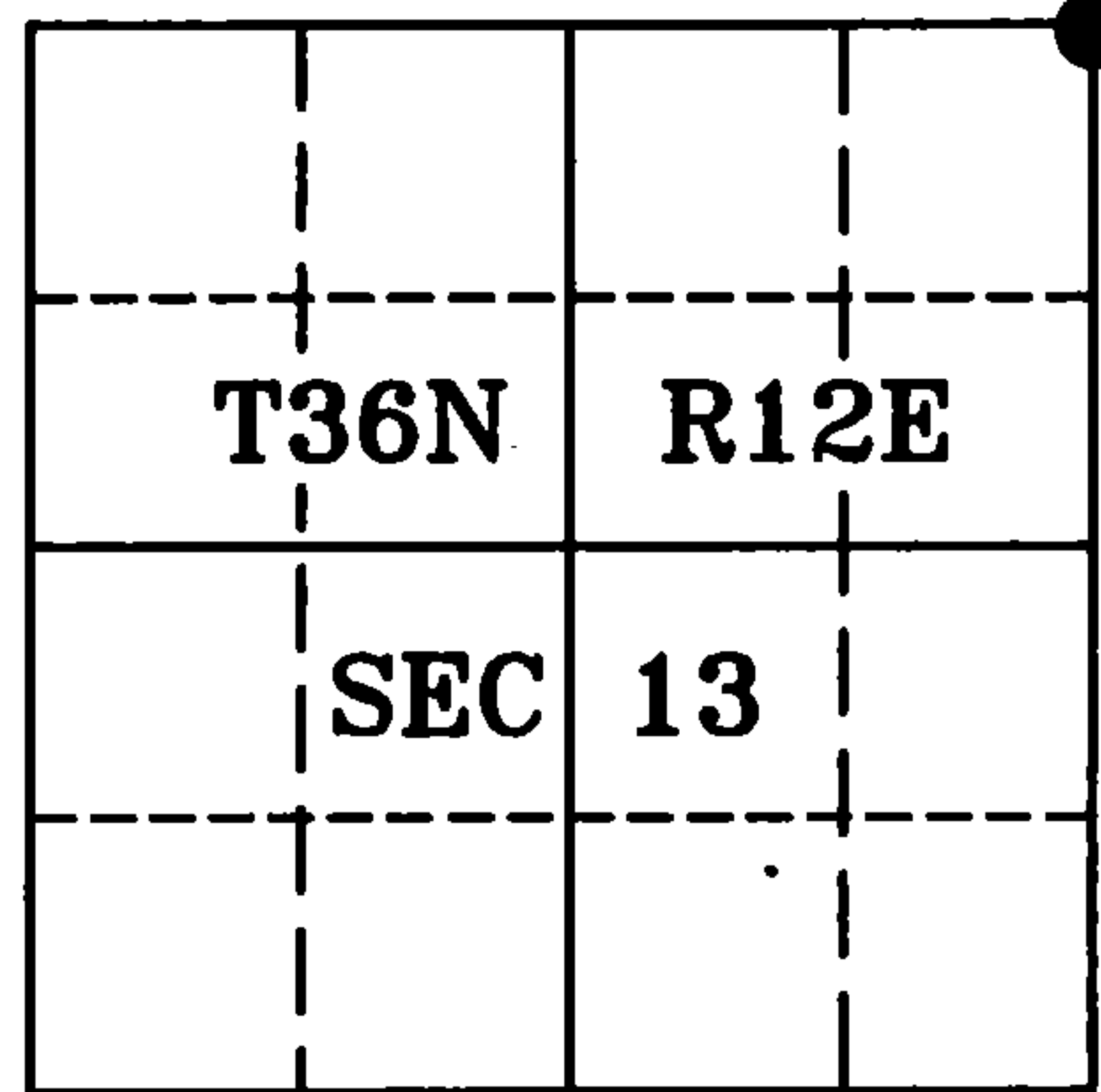
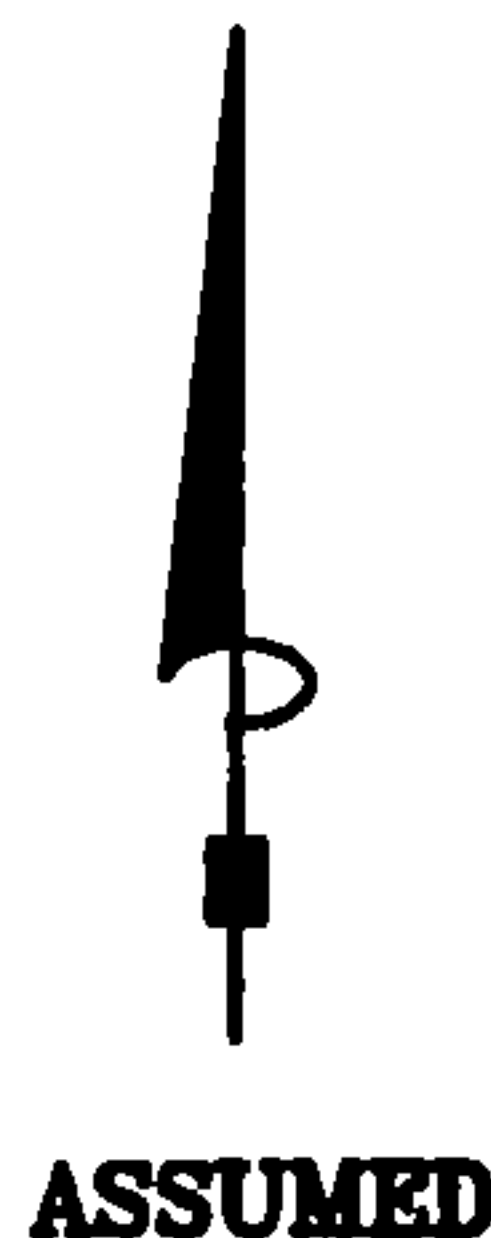
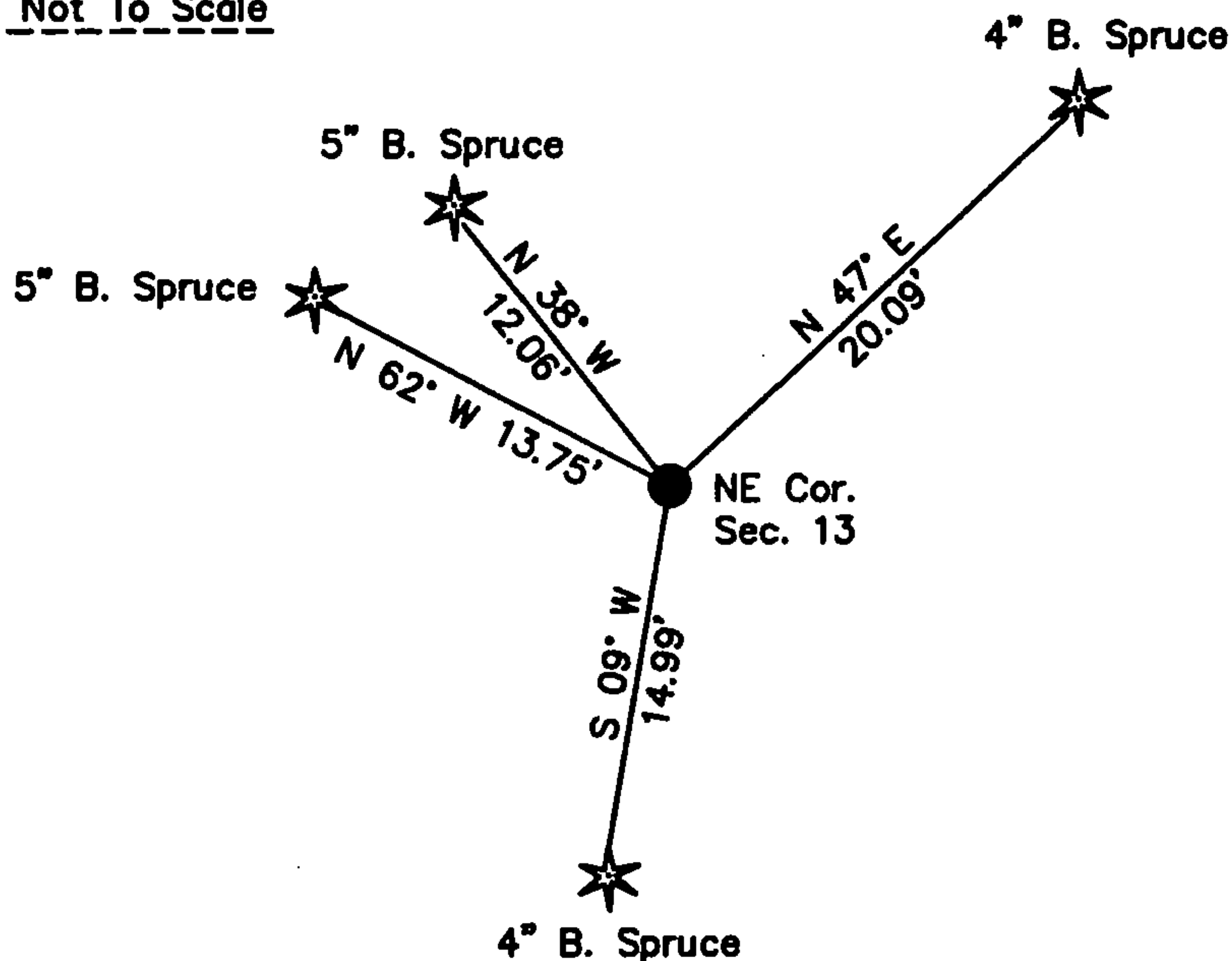
Describe the monument and accessories used to perpetuate the location of this corner (include a plan view drawing and indicate what was set and/or found).

Sketch Not To Scale

LEGEND:

- Found 1 1/4" Iron Pipe
○ Set 1" X 40" Iron Pipe inside found 1 1/4" Iron Pipe

Note: All distances are
taken to nail in
side of tree.



I, Michael A. Trembl, RLS
(type or print name) certify that the corner location shown on
this record was determined by me or under my direction and
control and that this U.S. Public Land Survey Monument Record
is correct and complete to the best of my knowledge and belief.

Michael A. Trembl 3/12/10
Signature Date

The Northeast corner of
Section 13 T. 36 N., R. 12 E.
Forest County, WI

Index No. J-25

43612120000

J-25