

Document Number
199362

REGISTER'S OFFICE
Forest County, WI

Received for record this 31ST day
of December AD, 2008
at 10:10 o'clock A M. and
recorded in Vol. Corner Restoration
on page L-25.

Kay Swanson
Deputy REGISTER

U.S. PUBLIC LAND SURVEY MONUMENT RECORD

(As Required by WI Adm. Code)

History of original corner establishment and subsequent restorations and descriptions of any record, monument, occupational, testimonial or other evidence considered:

1858 - Alfred Millard, set quarter corner section post and made the following B.T.'s:

Hemlock, 12", N 10° W, 13 lks., 8.58 feet.
Yellow Birch, 10", S 32° E, 34 lks., 22.44 feet.

1919 - I. R. Ritter set an iron pipe at quarter corner position and made the following B.T.'s:

Hemlock, 20", N 15° W, 48 lks., 31.68 feet.
Hemlock, 5", N 60° W, 23 lks., 15.18 feet.

2008 - I found a 3/4" iron pipe confirmed by Mel Statezny, long time resident,
to be the 1/4 corner position.

I replaced the Iron Pipe with a 2" Forest County Aluminum Pipe Monument
from which the following bear:

Balsam, 8", S 84° E, 9.60 feet.
Power Pole, #3613 18L10, S 14° E, 39.20 feet.
5/8" Rebar, S 17° W, 27.35 feet.
5/8" Rebar, N 35° W, 37.26 feet.

Corner was: (Check All That Apply)

- ☐ Restored through acceptance of an obliterated evidence location.
☒ Restored through acceptance of a found perpetuated location.
☐ Considered a lost corner and reestablished through lost corner proportionate methods (include a plan view drawing showing distances and directions to other Public Land Survey Corners used for proportioning and determining the corner location).
☐ Restored or reestablished in a location that differs from a previous restoration or reestablishment (include a plan view drawing and indicate what was set and/or found).

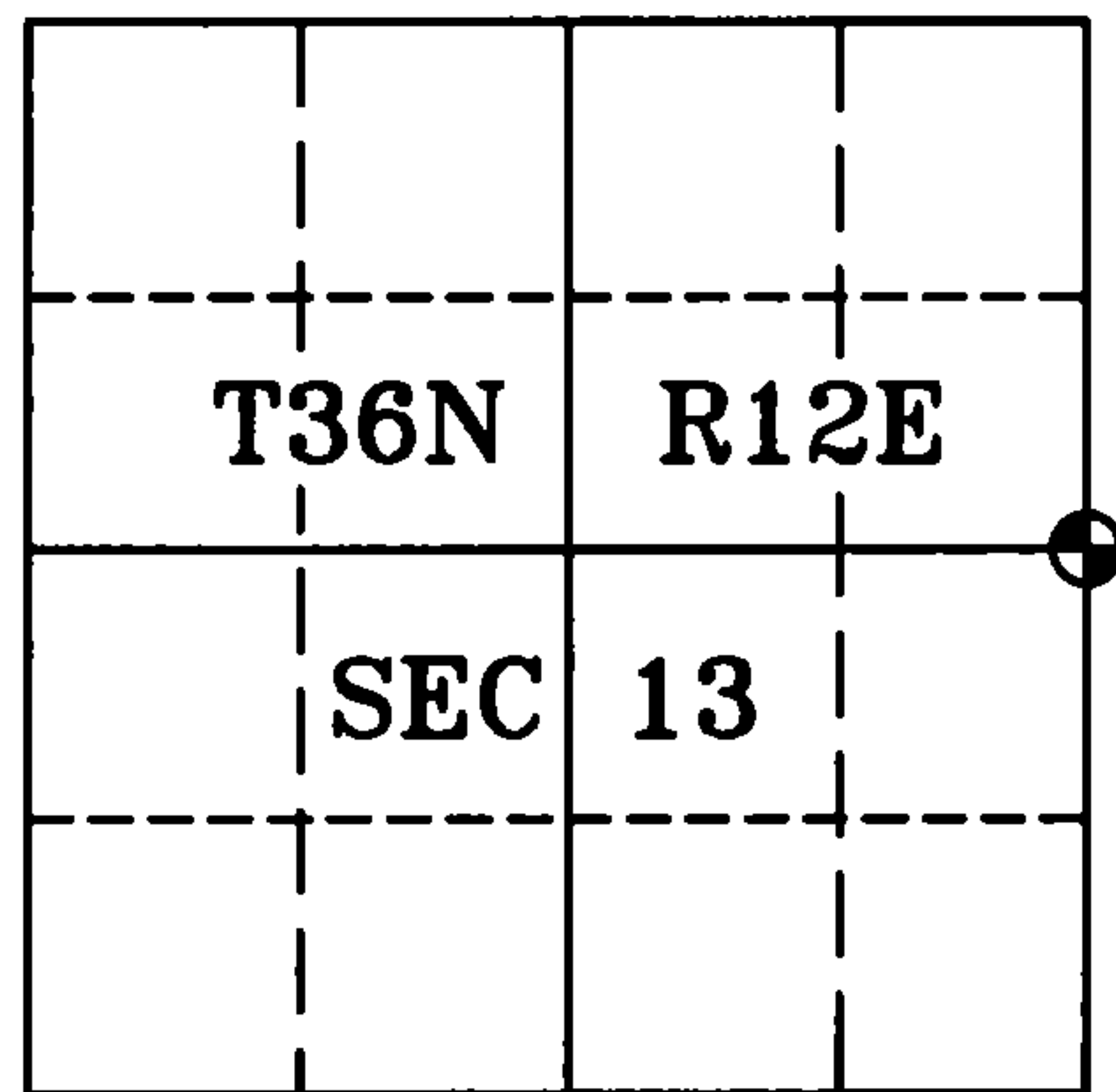
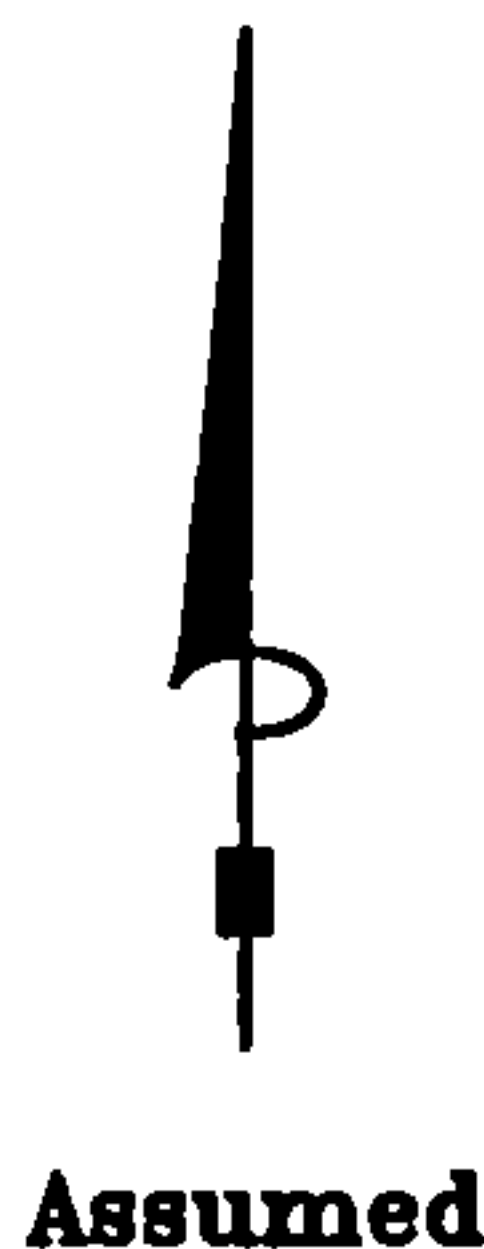
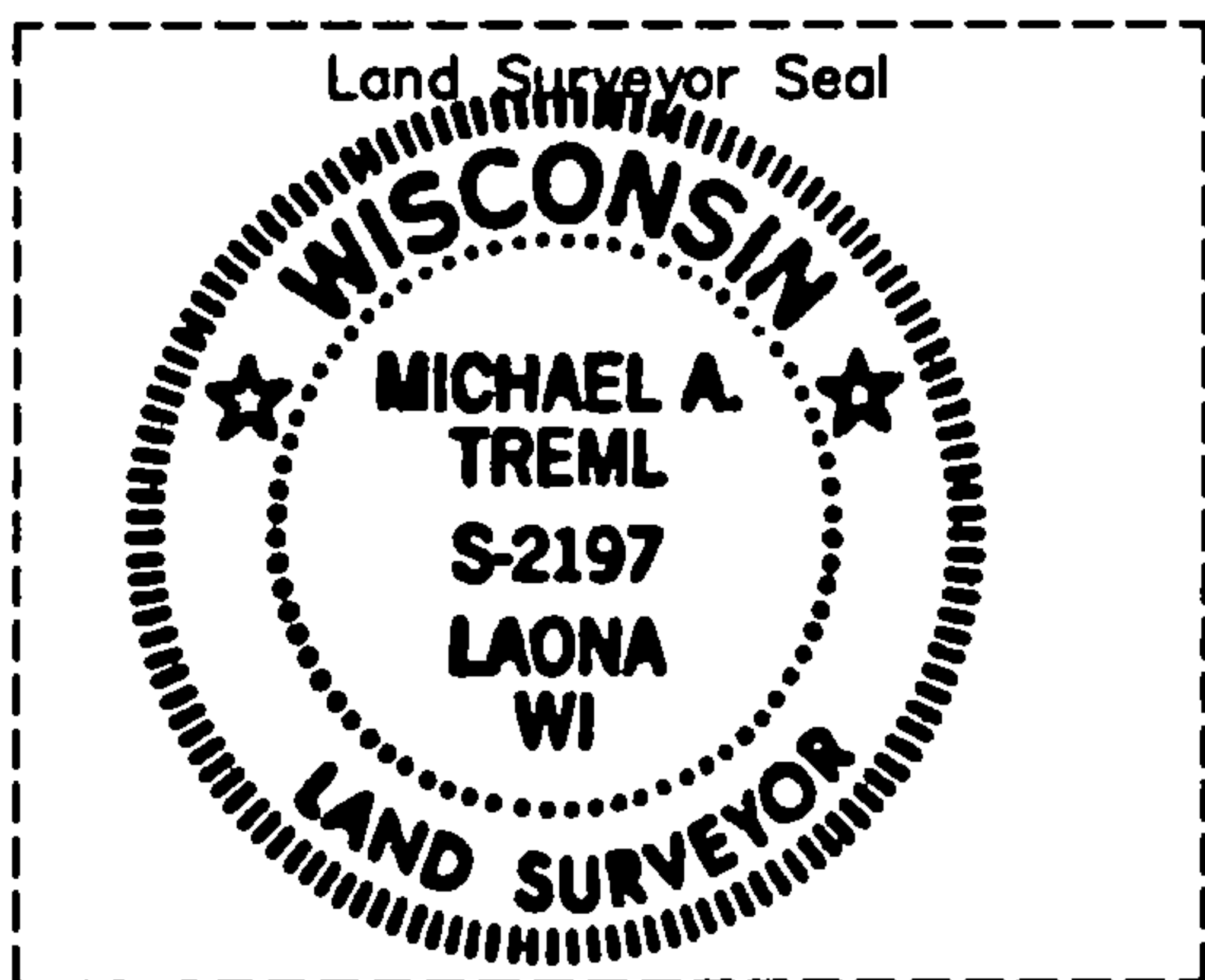
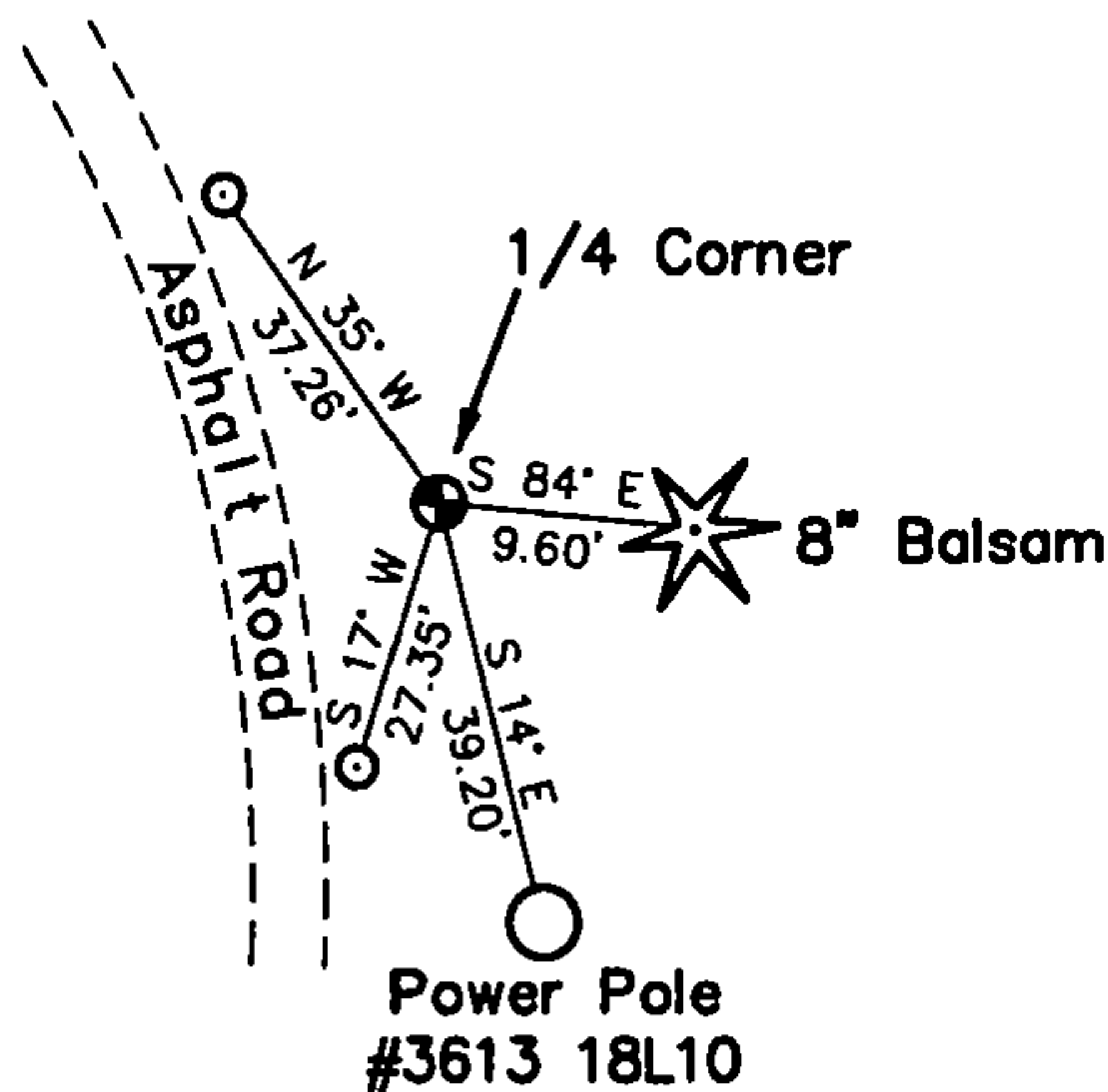
Describe the monument and accessories used to perpetuate the location of this corner (include a plan view drawing and indicate what was set and/or found).

Sketch Not To Scale

LEGEND:

- Set 2" X 30" Forest County
Aluminum Pipe Monument
○ Set 5/8" X 24" Rebar

Note: Distances are taken
to nail in side of tree
& power pole, and to
center of rebar.



I, Michael A. Tremi, RLS
(type or print name) certify that the corner location shown on
this record was determined by me or under my direction and
control and that this U.S. Public Land Survey Monument Record
is correct and complete to the best of my knowledge and belief.

Michael A. Tremi 11/11/08
Signature Date

The East Quarter corner of
Section 13 T. 36 N., R. 12 E.
Forest County, WI

Index No. L-25

43612132000

L-25