

Document Number

187591

REGISTER'S OFFICE
Forest County, Wis.
Received for record this 8th day
of June A.D., 2005 at
3:10 o'clock P.M. and recorded
in Vol. Corner Restoration
page N-17
Kay Swanson Deputy
Register of Deeds

U.S. PUBLIC LAND SURVEY MONUMENT RECORD

(As Required by WI Adm. Code)

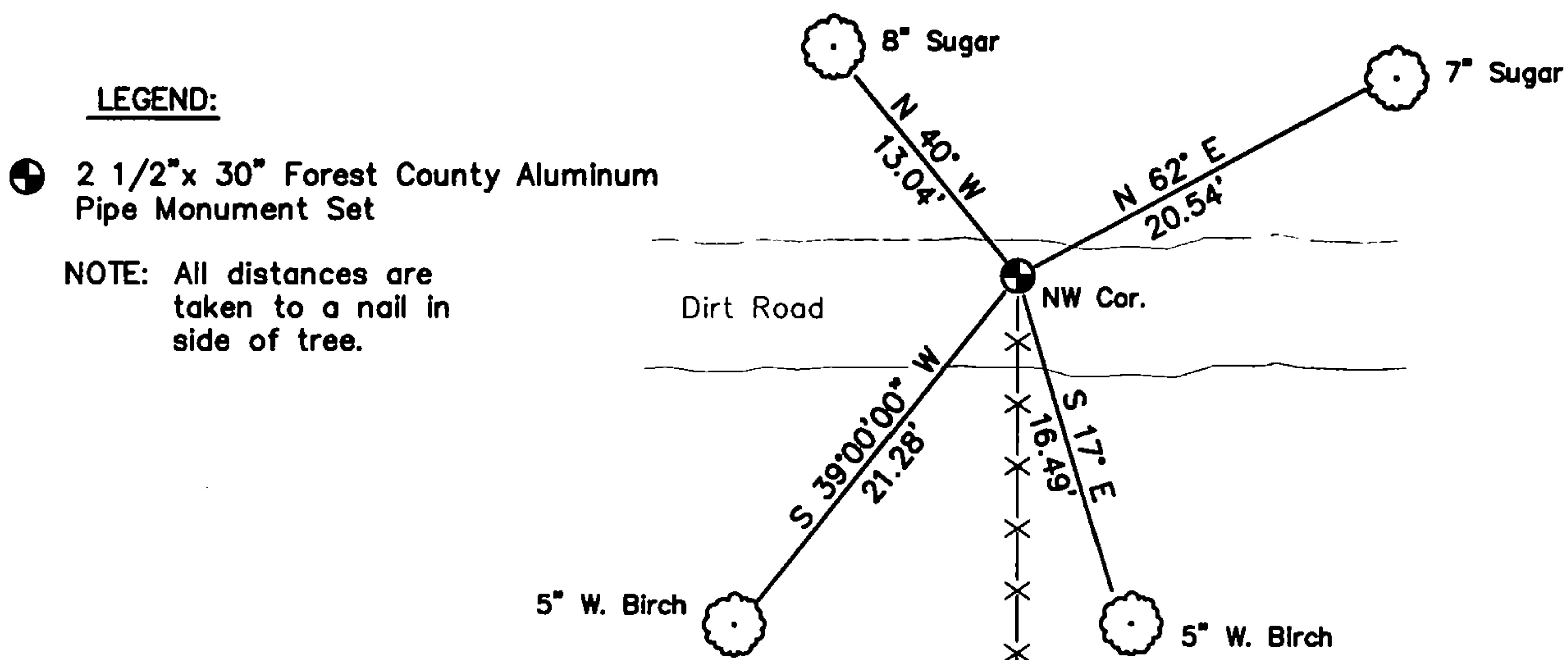
History of original corner establishment and subsequent restorations and descriptions of any record, monument, occupational, testimonial or other evidence considered:

- 1859 - William E. Daugherty, set corner to sections 14, 15, 22 and 23 and made the following B.T.'s:
Hemlock, 10", N 70° W, 13 lks., 8.58 feet.
Birch, 10", N 60° E, 21 lks., 13.86 feet.
- 1921 - I. R. Ritter, County Surveyor, It is assumed that Ritter found good evidence of the Section corner, and replaced it with a wooden stake.
- 2005 - I found no evidence of original corner or accessories.
I found a 1 1/8" Iron Pipe in North lane of a dirt road running east and west, and on an old barbwire fenceline running South. I accepted the Iron Pipe as the perpetuated Section corner & replaced pipe with a 2 1/2" x 30" Aluminum Pipe Monument. Left Iron Pipe next to monument.

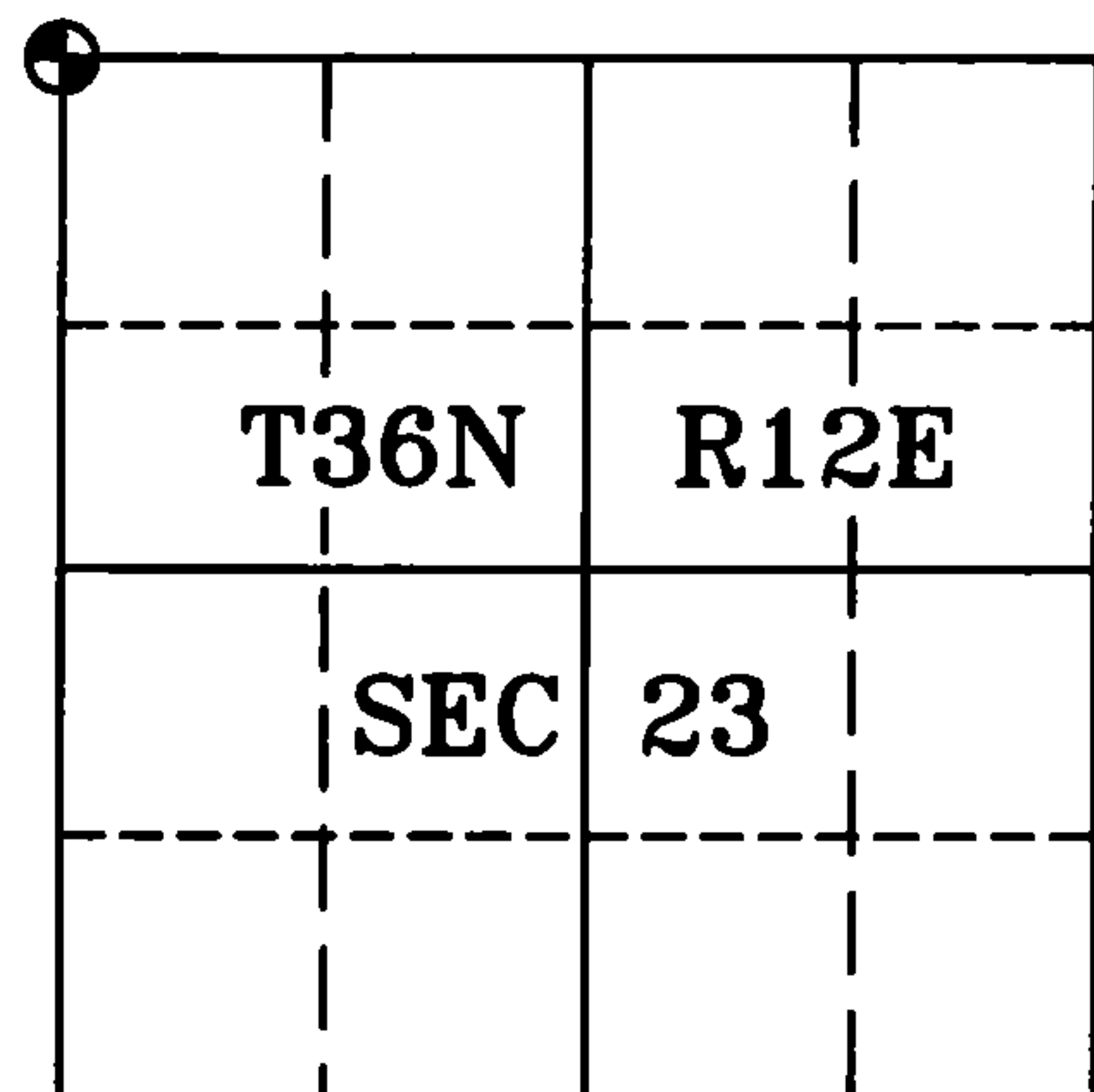
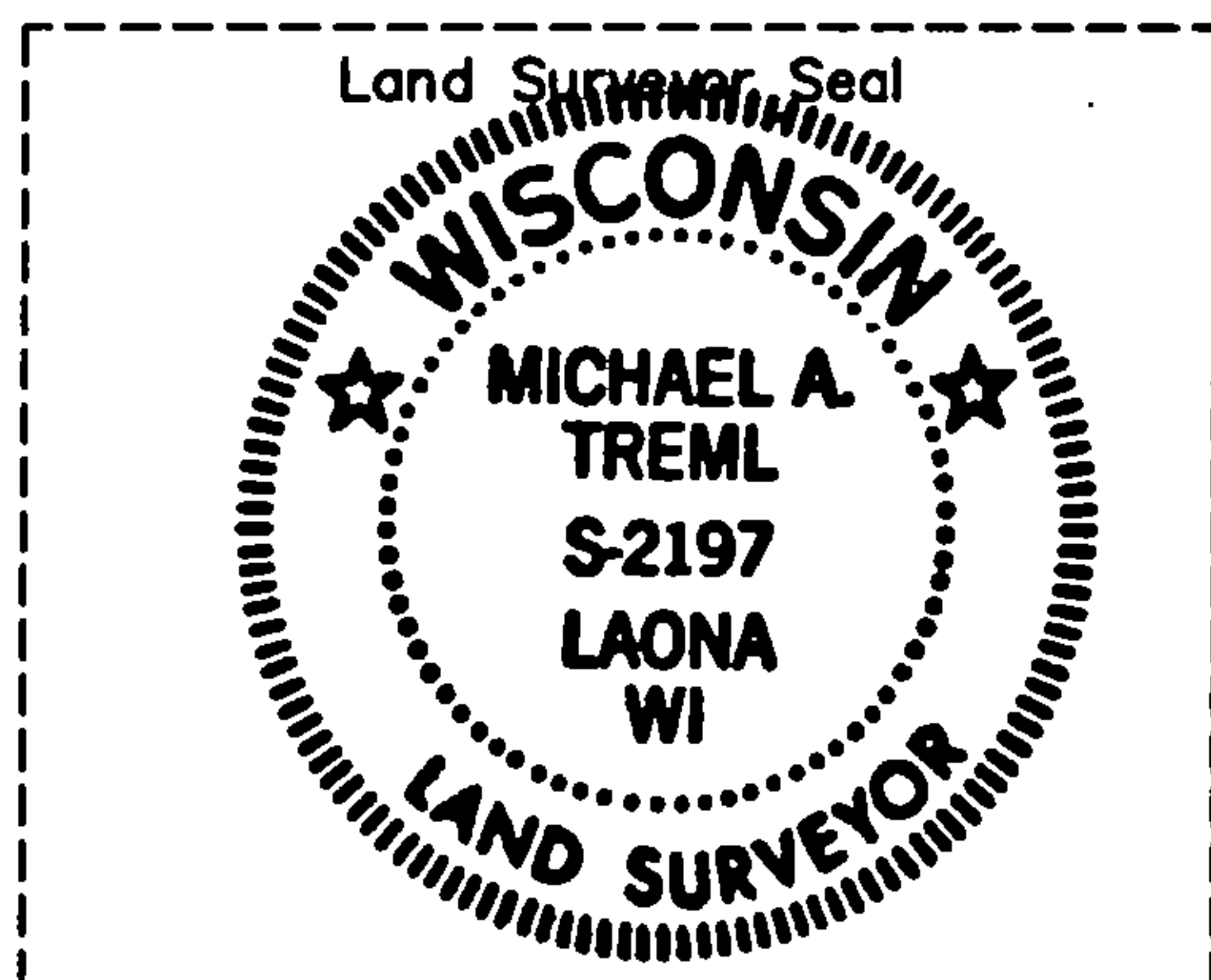
Corner was: (Check All That Apply)

- ☐ Restored through acceptance of an obliterated evidence location.
☒ Restored through acceptance of a found perpetuated location.
☐ Considered a lost corner and reestablished through lost corner proportionate methods (include a plan view drawing showing distances and directions to other Public Land Survey Corners used for proportioning and determining the corner location).
☐ Restored or reestablished in a location that differs from a previous restoration or reestablishment (include a plan view drawing and indicate what was set and/or found).

Describe the monument and accessories used to perpetuate the location of this corner (include a plan view drawing and indicate what was set and/or found).



Sketch Not To Scale



I, Michael A. Trembl, RLS
(type or print name) certify that the corner location shown on this record was determined by me or under my direction and control and that this U.S. Public Land Survey Monument Record is correct and complete to the best of my knowledge and belief.

Michael A. Trembl 6/8/05
Signature Date

The Northwest corner of
Section 23 T. 36 N., R. 12 E.
Forest County, WI

Index No. N-17

4361215 0006

N-17