

Document Number

195685

REGISTER'S OFFICE {  
Forest County, Wis. }  
Received for record this 17<sup>th</sup> day  
of October A.D., 2007 at  
9:00 o'clock A M. and recorded  
in Vol. Corner Restoration  
page N-11  
Kay Swanson, Deputy  
Register of Deeds

Project # 772

**U.S. PUBLIC LAND SURVEY MONUMENT RECORD**

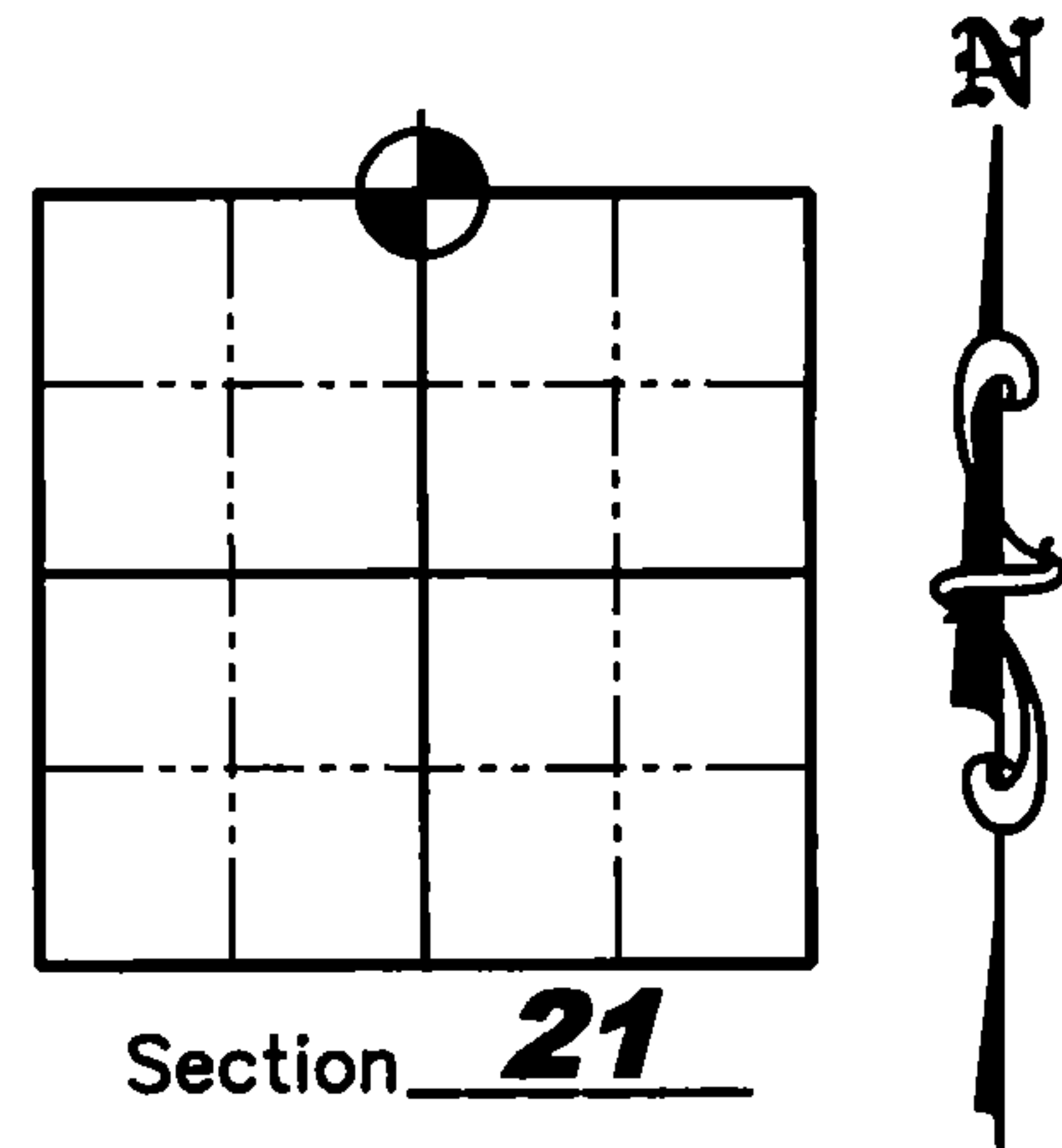
NOTE: This form is intended and designed to fulfill all requirements of Wisconsin Administrative Code, Chapter A-E 7 .08 U.S. Public Land Survey Monument Record (3)(a)(b)(c)(d)(e)(f)(g)(h)(i). An additional sheet may be added if necessary to conform with said requirements.

(a) Corner location: Township 36 North

Range 12 East

Town of Crandon

County of Forest



(b)(f)(g)(h) Description of monument found at this corner and if it was accepted, state all evidence (material, testimonial, occupation, plats, records, other monuments) used as a basis for accepting. If not accepted or if nothing was found, state evidence used as a basis for establishing location. If reestablished through lost corner proportionate methods, indicate all monuments, distances and directions used to establish. Indicate type of monument found or set and sign post.

August 1859 – William Daugherty set quarter Section post and BT's: Cedar 12" S80°W 10lks.; Tamarack 16" S55°E 15 lks.

July 19, 1937 – A.J. Lytle found Original cedar face down buried in swamp. He dug around and found iron marks all there. He set new stake. BT: Cedar 10" S80°W 10 lks.

June 10, 1998 – Devon Vanden Heuvel Set a 3/4" iron rod per Certified Survey Map recorded in Volume 5 Page 119 for the one-quarter corner.

May 10, 2002 – Eugene C. Uttech shows a calculated position per corner established by Devon Vanden Heuvel in 1998. He used this corner to reestablish the Northwest corner of Section 21 and to subdivide Section 16 to the North.

February 28, 2007 – Matthew E. Hoglund searched for the corner and found no evidence of the corner. We talked to Eugene C. Uttech and he said that they had also searched for the corner and found nothing. We calculated the corner per Certified Survey Map recorded in Volume 5 on Page 119 and set a 7/8" iron rebar with an Aluminum Cap and set 4 BT's as shown on Sheet 2 hereof. See Plat of Survey By: Matthew E. Hoglund dated April 22, 2007

(c)(d)(e) Plan view of corner with ties to at least 4 witness monuments. If in disagreement with previously established corner, show the distances between the two corners and also indicate the ties to the disputed corner.

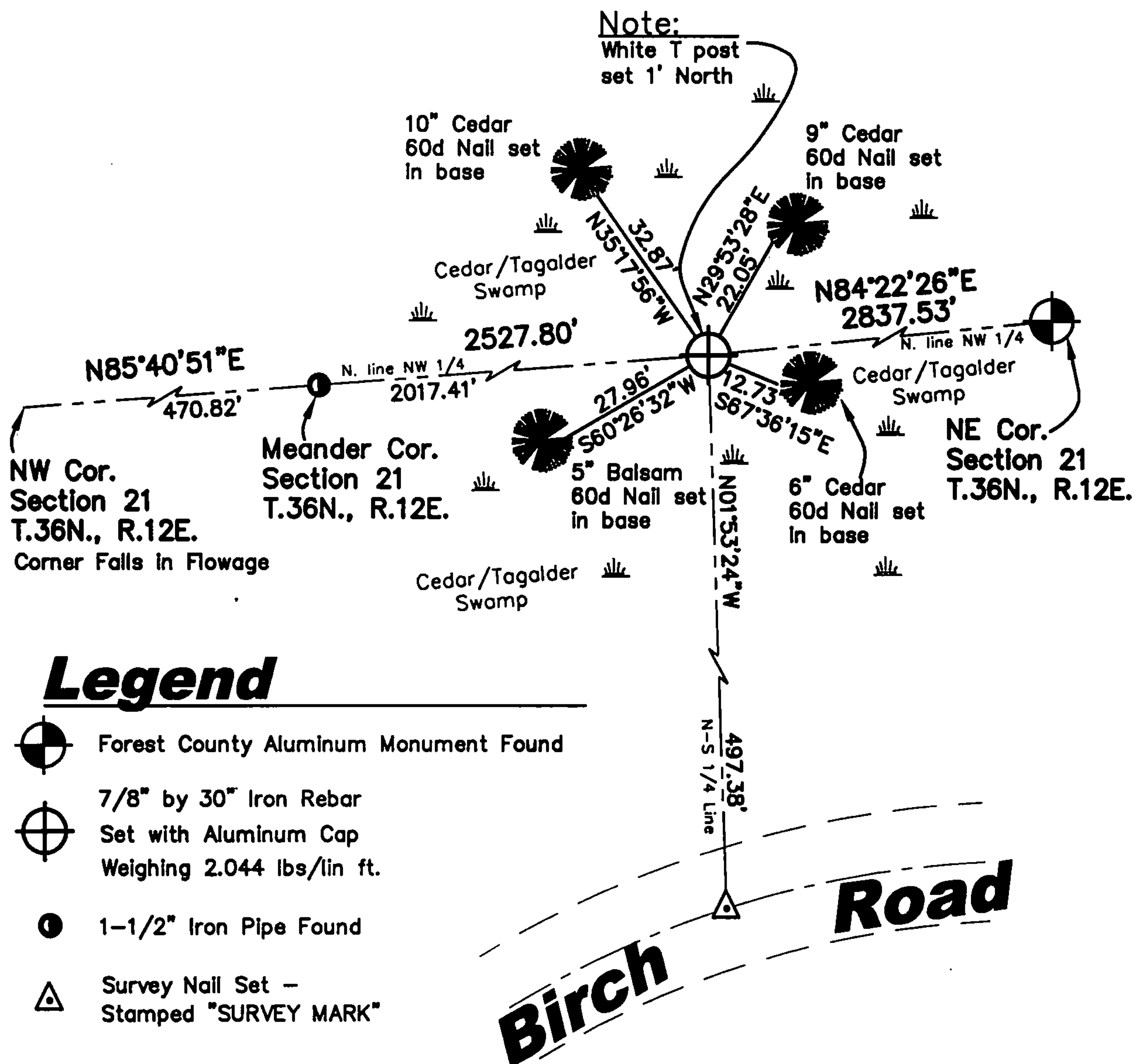
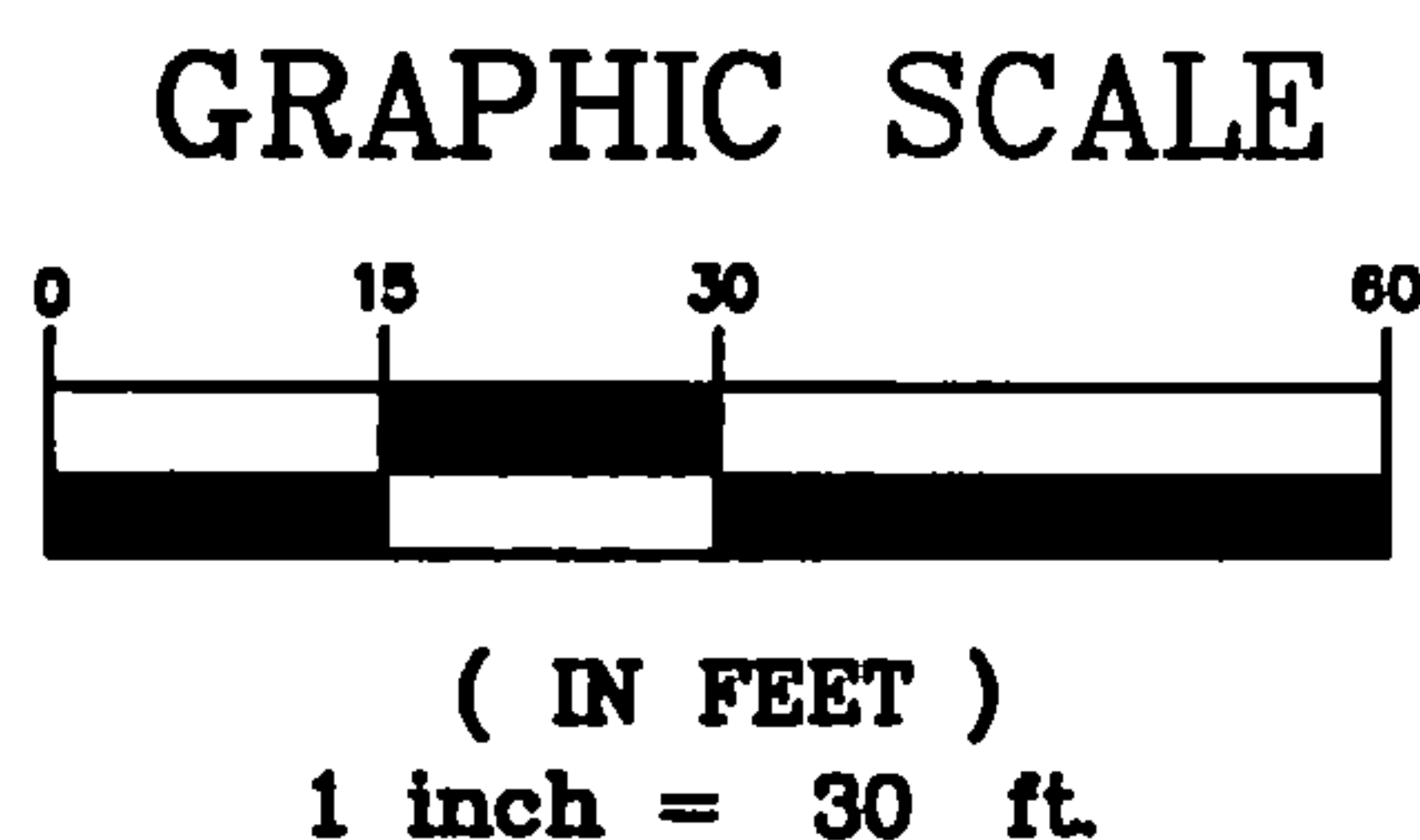
See Sheet 2 Hereof.

Sheet 1 of 2

43612160020

N-11

# U.S. PUBLIC LAND SURVEY MONUMENT RECORD



## Legend

- Forest County Aluminum Monument Found
- 

(I) I, Matthew E. Hoglund, certify that the corner location on this record was determined by me under my direction and control and that this U.S. Public Land Survey Monument is correct and complete to the best of my knowledge and belief.

Signature Date 10/16/07

**WISCONSIN**  
MATTHEW E. HOGSLUND  
S-1910  
TOMAHAWK  
WI  
LAND SURVEYOR