

Document Number

192901

REGISTER'S OFFICE
Forest County, Wis.

Received for record this 28th day

of NOVEMBER A.D., 2006 at

8:45 o'clock A.M. and recorded

in Vol. CR CORNEL

page N-3 RESTORATIONS

Paul A. Schenck
Register of Deeds

U.S. PUBLIC LAND SURVEY MONUMENT RECORD

(As Required by WI Adm. Code)

History of original corner establishment and subsequent restorations and descriptions of any record, monument, occupational, testimonial or other evidence considered:

1859 - William E. Daugherty, set original corner post and made the following B.T.'s:

Hemlock, 6", S 50° W, 12 lks., 7.92 feet.

Birch, 7", N 10° E, 6 lks., 3.96 feet.

2006 - I found no evidence of original corner. Existing Fence line running West & North.

I accepted the fence intersection as best available evidence of corner position.

I set a 2" X 30" Forest County Aluminum Monument at this position.

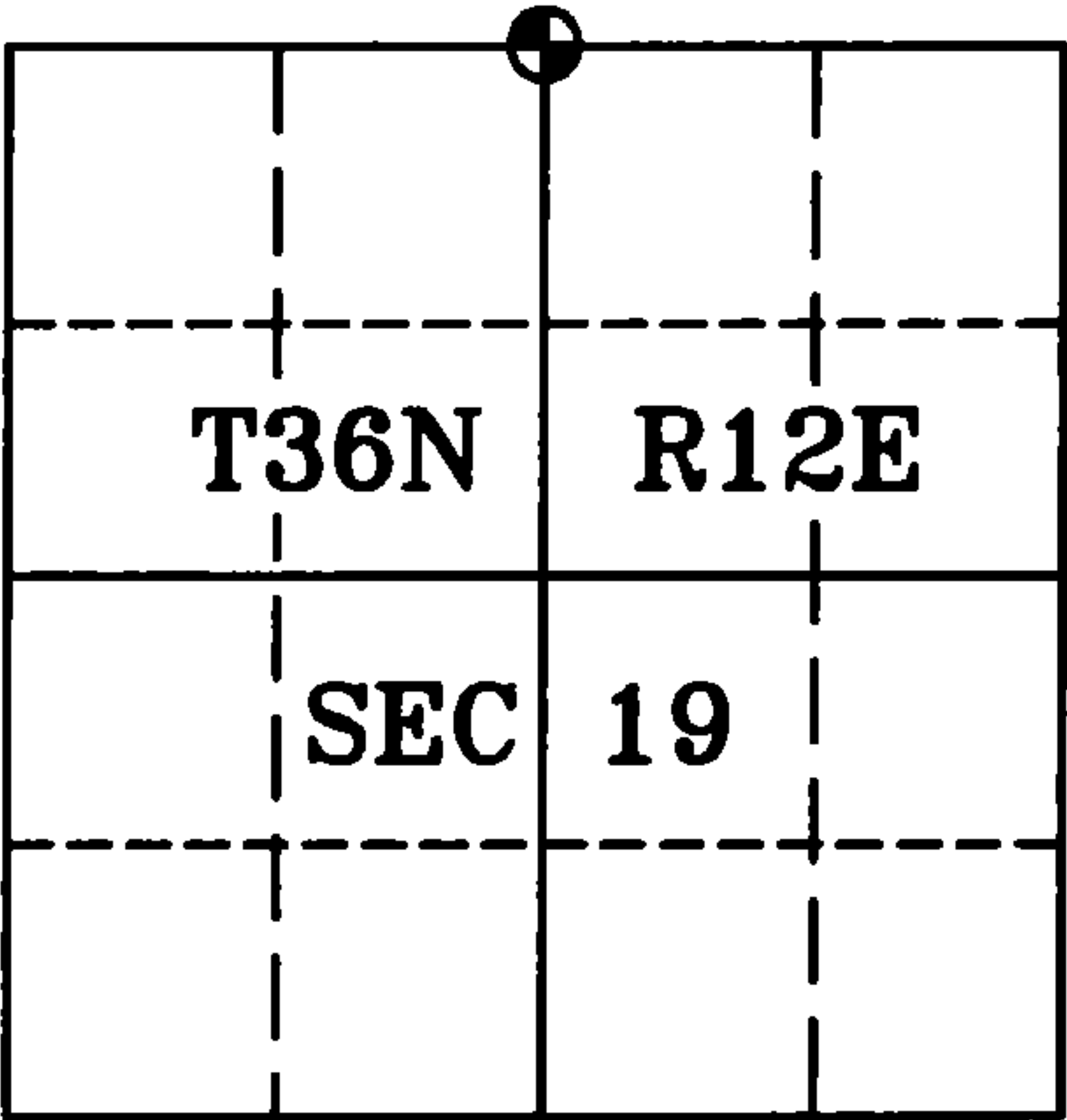
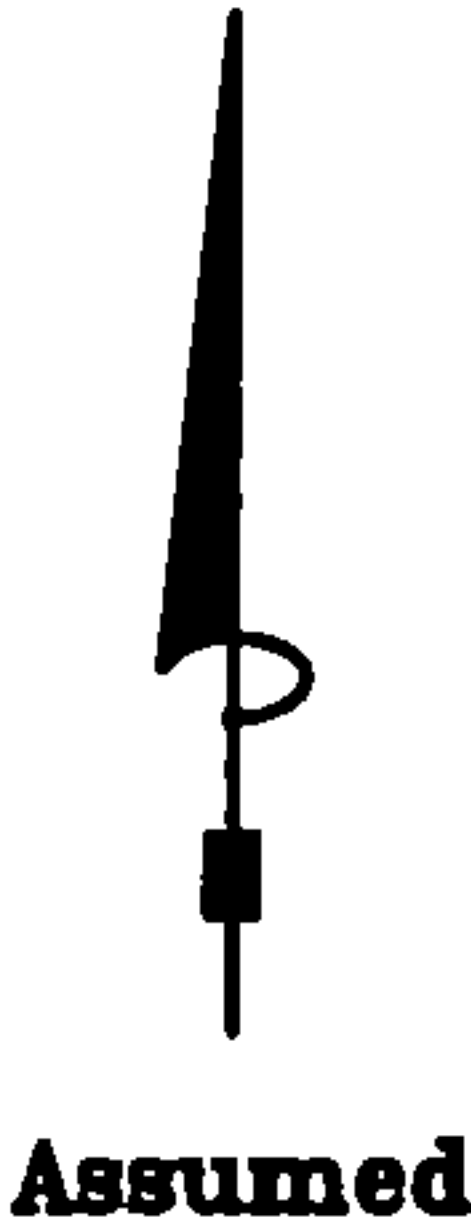
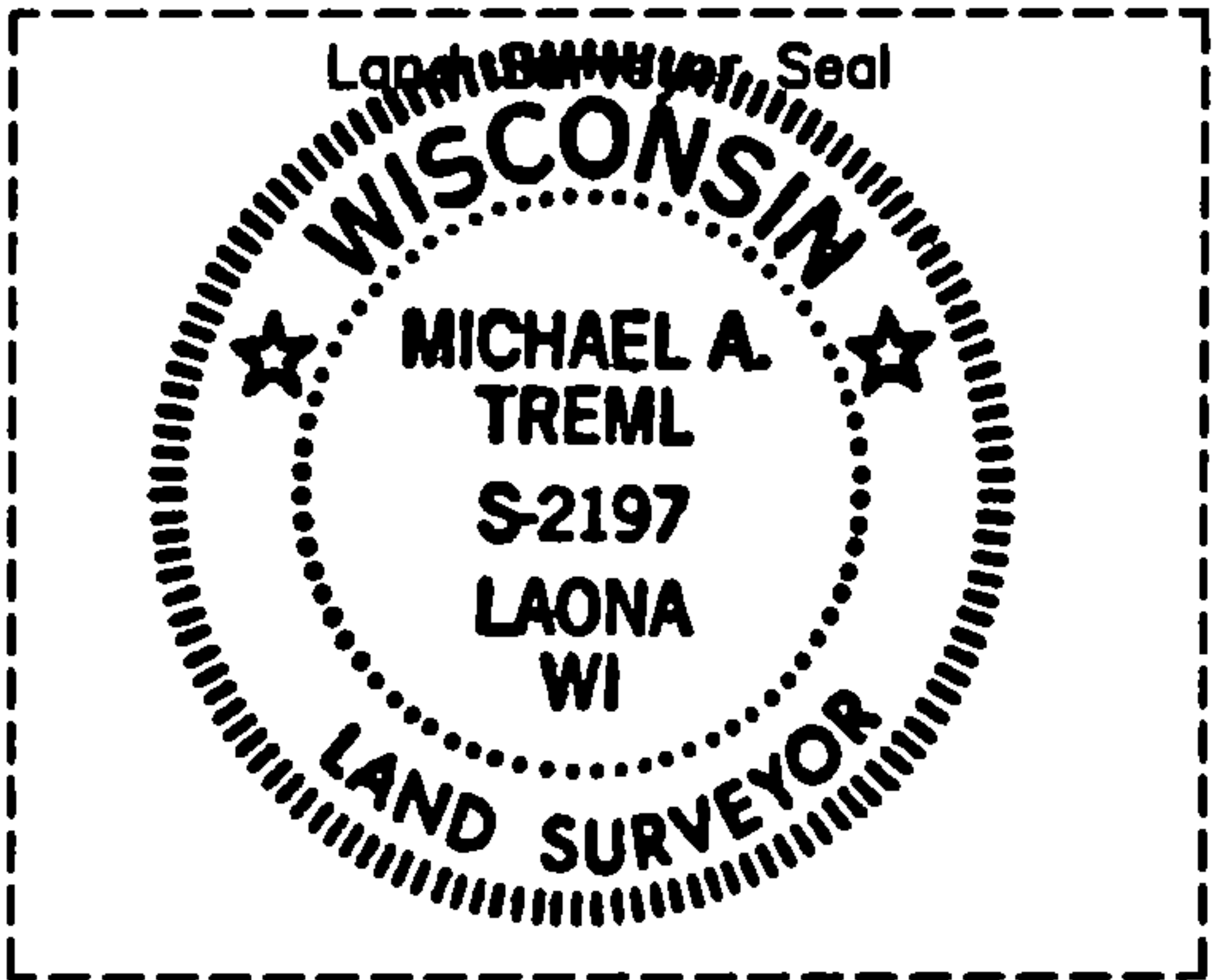
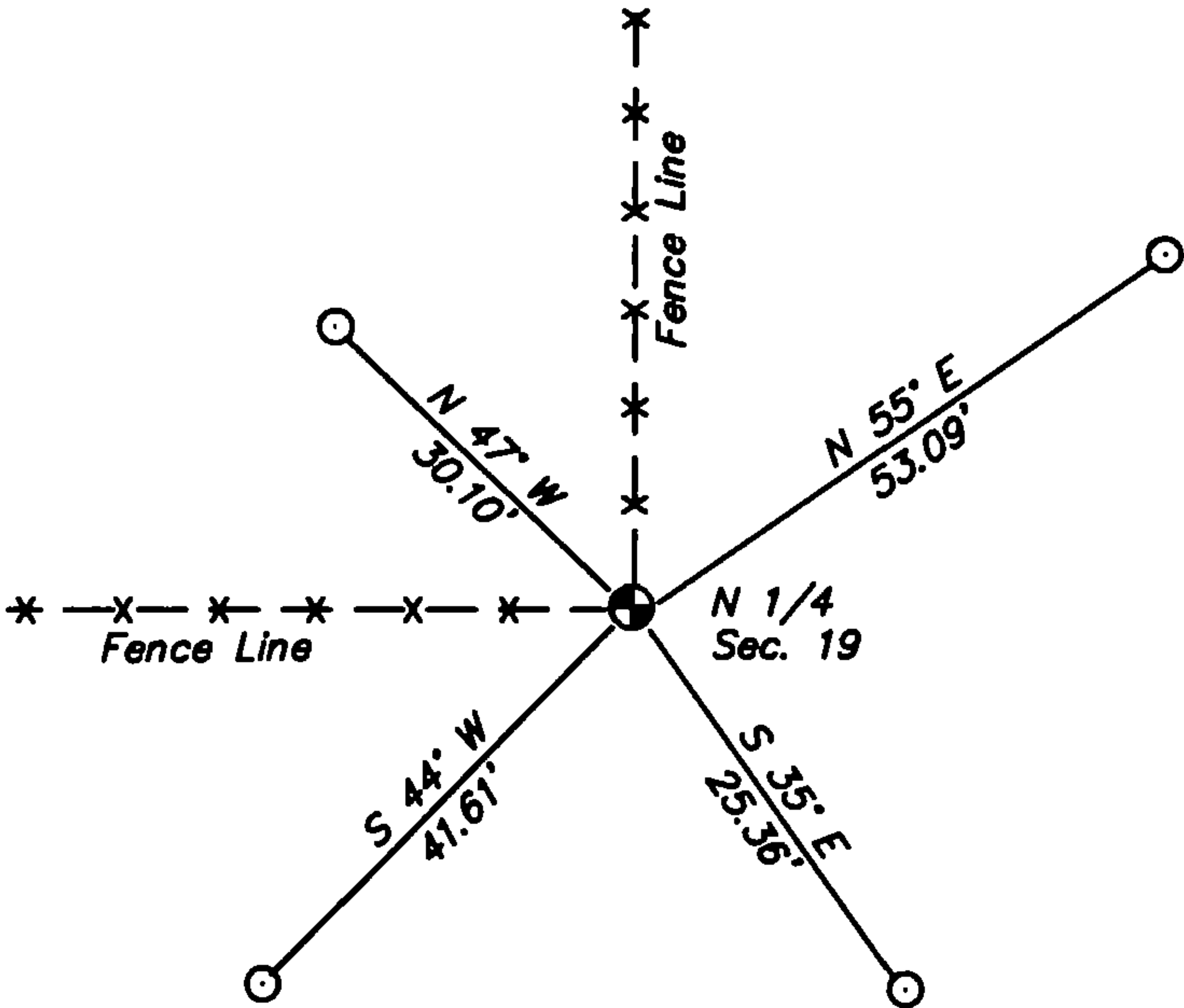
Corner was: (Check All That Apply)

- ☐ Restored through acceptance of an obliterated evidence location.
☒ Restored through acceptance of a found perpetuated location.
☐ Considered a lost corner and reestablished through lost corner proportionate methods (include a plan view drawing showing distances and directions to other Public Land Survey Corners used for proportioning and determining the corner location).
☐ Restored or reestablished in a location that differs from a previous restoration or reestablishment (include a plan view drawing and indicate what was set and/or found).

Describe the monument and accessories used to perpetuate the location of this corner (include a plan view drawing and indicate what was set and/or found).

LEGEND:

- ⊕ Set 2" X 30" Alu. Mon.
○ Set 1" o.d. X 20" Iron pipe



I, Michael A. Tremel, RLS
(type or print name) certify that the corner location shown on this record was determined by me or under my direction and control and that this U.S. Public Land Survey Monument Record is correct and complete to the best of my knowledge and belief.

Michael A. Tremel 11-25-06
Signature Date

The North Quarter corner of
Section 19 T. 36 N., R. 12 E.
Forest County, WI

Index No. N-3
2006

43612180020