

CERTIFIED LAND CORNER RESTORATION

Index No. R-5

State of Wisconsin }
County of Forest } ss.

History of original corner establishment: By James L. Nowlan, 8/8/1859, at 80.00 Chains, set Section Corner Post/two BTs:
10" Fir, S71°E, 24 Lks
7" Hemlock, N40°W, 22 Lks

I Milo E. Stefan, do hereby certify that on the 14th day of December, 1993, I found evidence of the Section corner ~~88~~ to Sections 19, 20, 29 & 30 Township 36, North, Range 12 East, Fourth Principal Meridian, as described hereon; and that from this evidence I established a new monument and accessories as described hereon to perpetuate the original location of this corner.

Resident witnesses:

Myron Smith
Charles Blomdahl
Virgil Gumm (Local Resident)

Description of corner evidence found:
May 2, 1921 - I.R. Ritter's "Record of Survey" as filed with the Forest County Register of Deeds indicates he found evidence of this corner. As the corner falls in the roadway he placed a post East and West, 38 Links of the corner position.

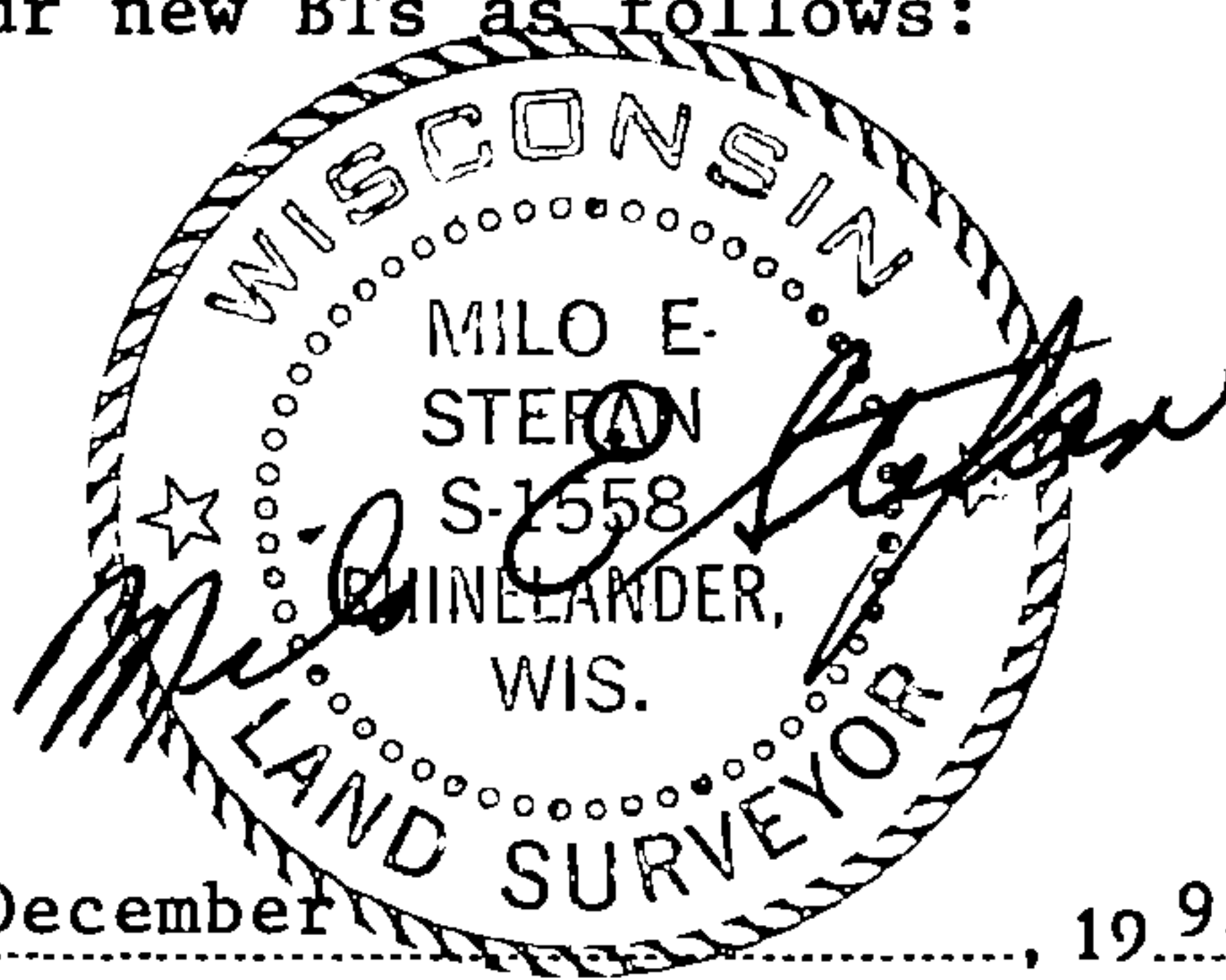
3/23/1990 - CSM, Vol. 4, Page 98 by William Kelly calls a PK Nail over an iron in road and 2656.98 feet North of 1/4 Corner to Sections.

7/10/1992 - CSM, Vol. 4, Page 162 & 162A by Glen Barker used PK Nail over an iron in road and 2605.57 feet South of 1/4 Corner to Sections 19 and 20.

12/14/1993 - After study of Ritter's "Record of Survey" and the two CSMs, I conclude that this corner must be restored by proportional measure from Ritter's notes & centerline of old Hwy 8. Description of monument and accessories I established to perpetuate the original location of this corner.

We placed a railroad spike in the road surface for the Section Corner, set a Witness Corner, a 1" x 24" aluminum monument East, 24.75 feet and made four new BTs as follows:

12" Red Maple, N84°E, 222.71 Feet
12" Red Pine, N66°W, 44.20 Feet
Power Pole #3612-30E12, S20°W, 80.07 Feet
Northwest Corner of House, S63°E, 104.05 Feet



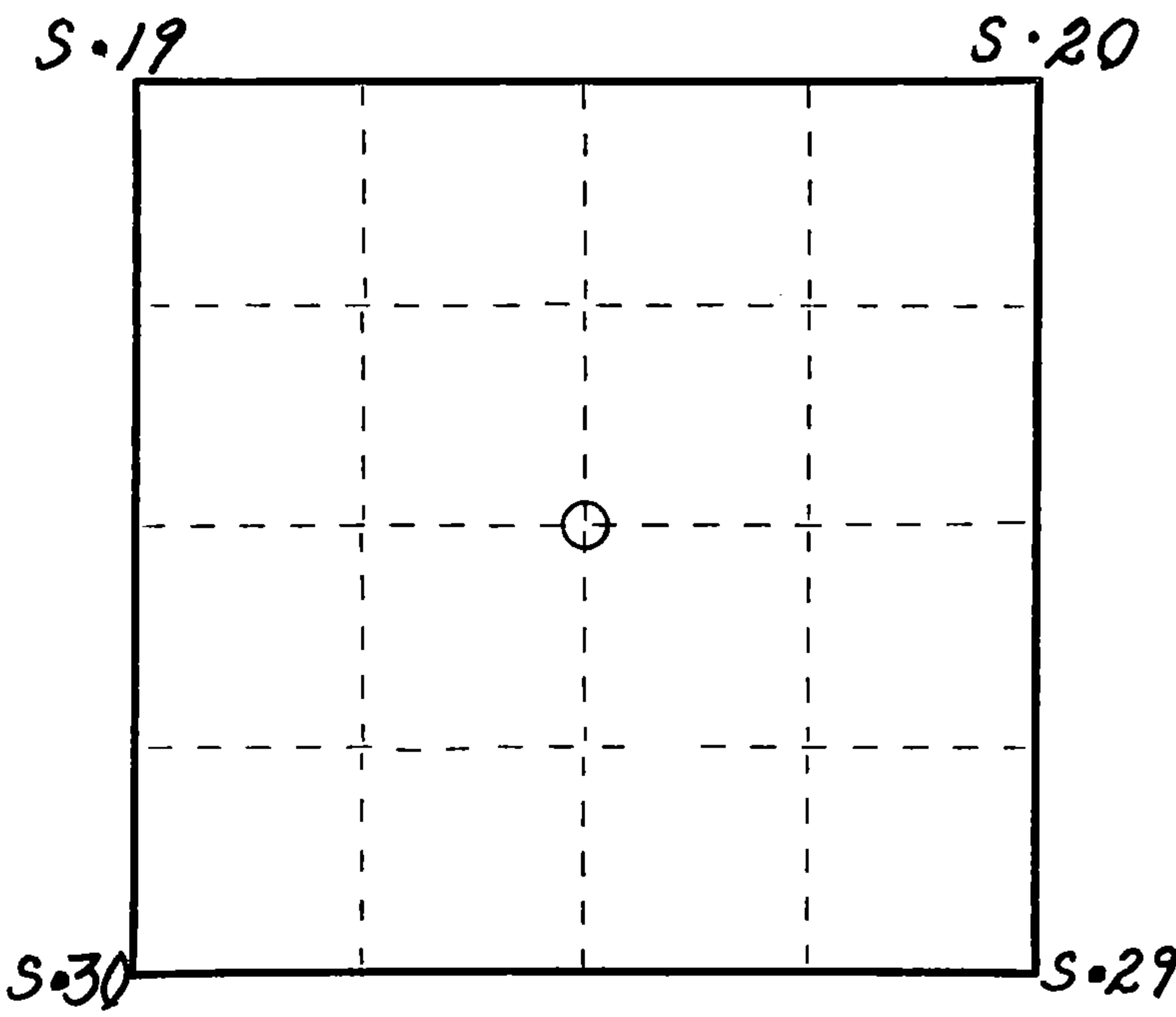
Dated at Rhinelander, Wis., this 30th day of December, 1993

Signature Milo E. Stefan Title Registered Land Surveyor Registration No. 1558
(County Surveyor, Registered Land Surveyor, or other duly authorized official)

Office of Register of Deeds, County of Forest, I hereby certify that the within instrument was filed in this office for record on the 7th day of FEBRUARY, 1994 at 1:30 o'clock P. M.

Paul A. Schaeffer
(Register of Deeds)

By Deputy



○ = Corner monument restored.

DOCUMENT NUMBER
149576

FORM 985 M. G. MILLER CO., MILWAUKEE

4301219000

- e) Describe any material discrepancy between the location of the corner as restored or reestablished and the location of that corner as previously restored or reestablished by distance and direction. Show the discrepancy on the plan view drawing under (d), above. Show the distances between the corner as previously restored or reestablished and (1) the corner as restored or reestablished, and (2) to at least 2 of the witness monuments shown on the drawing in (d), above.

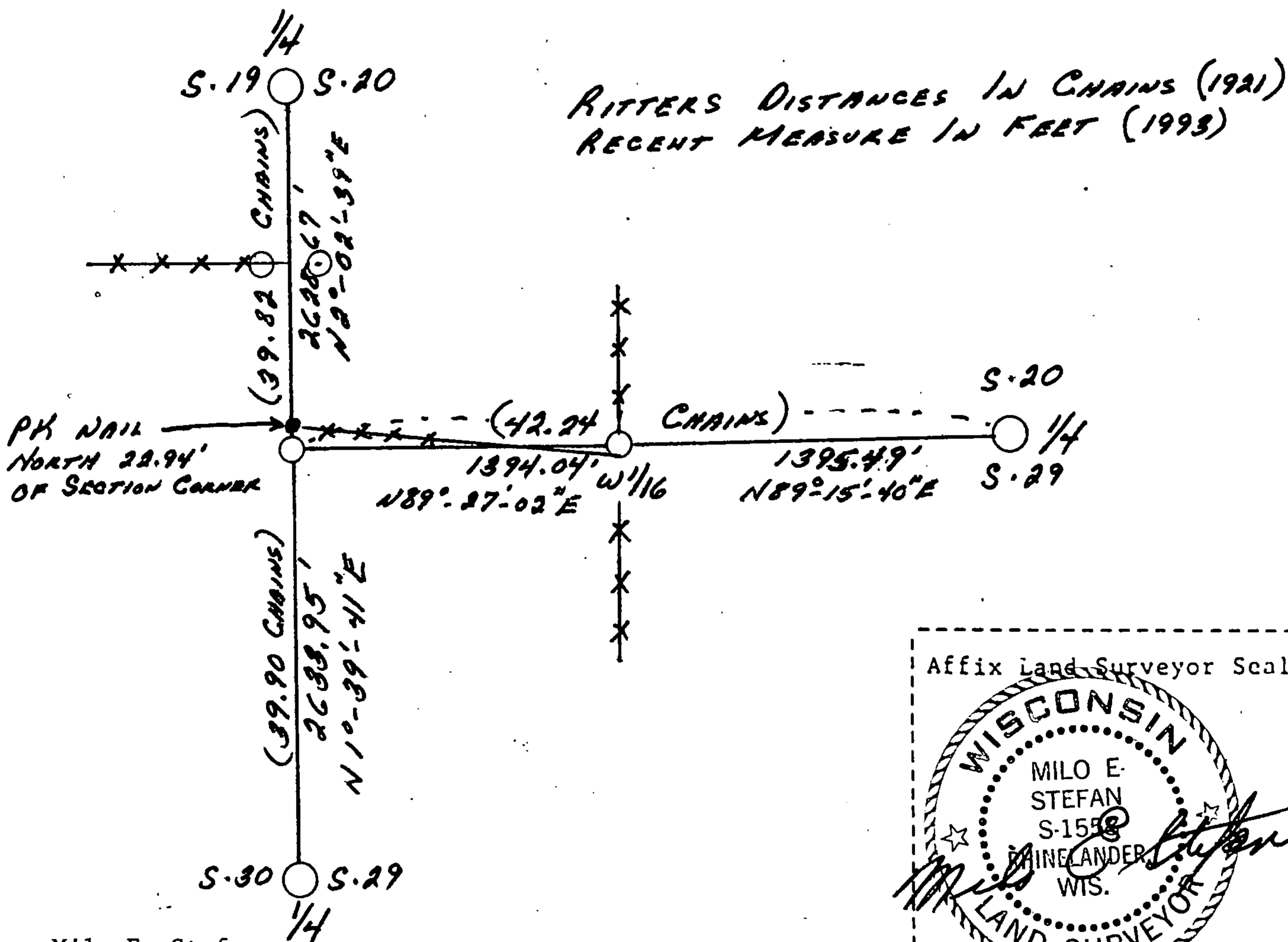
Position of this corner as used by Kelly and Barker on the CSMs in 1990 and 1992 does not conform with what I.R. Ritter indicates on his "Record of Survey" of Section 20 and Section 29 in May 1921. The source of the iron pipe as Kelly states he found has no record of who and when it was placed here. See paragraph g & h for details of how we restored this corner position.

- (f) Was the corner restored through acceptance of (1) an obliterated evidence location, or, (2) a found perpetuated location?

N/A

- (g&h) Was the corner reestablished through lost corner proportionate methods? If so, show the method, including the directions and distances to other public land survey corners used as evidence or used for proportioning in determining the corner location?

This corner position being restored by proportional measure using the Ritter Survey records North and South and using the centerline of the "old Highway 8" East and West.



- (i) I, Milo E. Stefan
(type or print name) certify that the corner location shown on this record was determined by me or under my direction and control and that this U.S. Public Land Survey Monument Record is correct and complete to the best of my knowledge and belief.

Milo E. Stefan
Signature

12/30/93
Date