

# U S PUBLIC LAND SURVEY MONUMENT RECORD

NOTE: This form is intended and designed to fulfill all requirements of Wisconsin Administrative Code, Chapter A-E 7.08 U.S. Public Land Survey Monument Record (3) (a-i)

A-E 7.08(3)(a) Identity of corner  
SOUTHEAST CORNER OF SECTION 22  
TOWNSHIP 36 NORTH  
RANGE 12 EAST OF THE 4TH PM  
TOWN OF CRANDON  
COUNTY OF FOREST

WISCRS - FOREST COUNTY  
N: 574,540.574 USft  
E: 820,990.224 USft  
Datum: NAD83 (2011)  
GNSS Method RTN - Direct  
GNSS Control WISCORS VRS



The coordinate value shown has been verified by the average of two or more GPS observations at a markedly different time.

A-E 7.08(3)(b) Description of any record evidence, monument evidence, occupational evidence, testimonial evidence, or any other material evidence.

Original Surveyor: William E. Daugherty

Date of Original Survey    Commenced:    August 4, 1859  
   Completed:    August 9, 1859

Original Accessories:

Hemlock    10    N 51° E    40  
Birch        14    S 22° W    14

See Previous Monument Record:  
Index No. R-17  
Document No. 172368

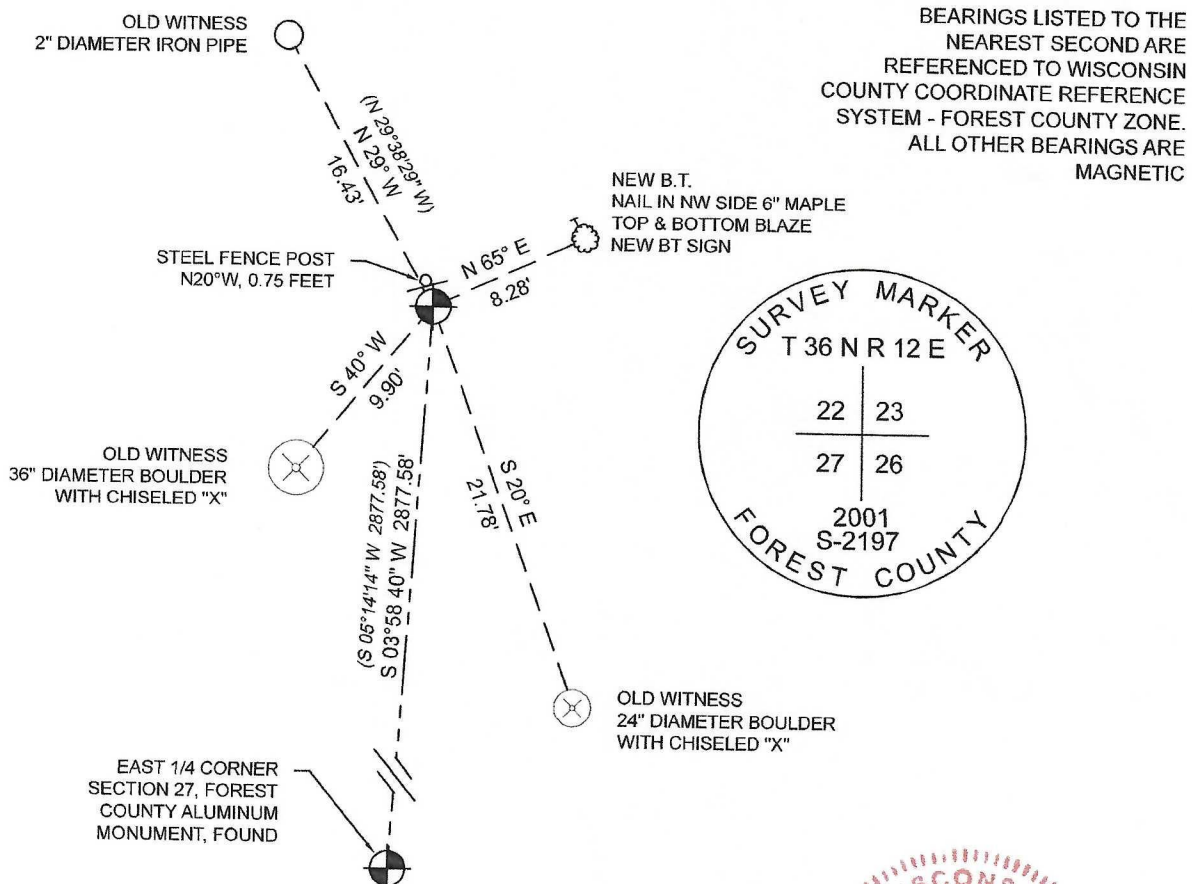
July 23, 2001 - Surveyor 2197 - Michael A. Trembl - Found witnesses and remains of wooden stake at corner location. Trembl set a stamped Forest County aluminum monument.

A-E 7.08(3)(f) The corner is a found perpetuated location.

September 13, 2021 - I found a 2 1/2" diameter aluminum pipe with a 3 1/4" diameter aluminum capped Forest County aluminum monument stamped to identify the corner. I also found 3 witness monuments intact, and established 1 new witness as shown below.

A-E 7.08(3)(c)(d)(e)(h) Plan view of corner with references to at least 4 witness monuments. If in disagreement with previously established corner, show the distances between the two corners and also indicate the ties to the disputed. The directions and distances to other public land survey corners used as evidence or used for determining the corner location.

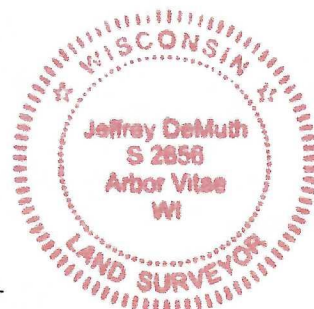
( ) = PREVIOUSLY RECORDED AS



A-E 7.08(3)(i) I, Jeffrey L. DeMuth, Professional Land Surveyor No. S-2656, hereby certify that the corner location on this record was determined by me or under my direction and control and that this U.S. Public Land Survey Monument Record is correct and complete to the best of my knowledge, and belief

SIGNATURE

February 2, 2022  
DATE



43612220000

DOCUMENT NUMBER  
A49578

FORM 985 H. C. MILLER CO., MILWAUKEE

State of Wisconsin }  
County of Forest } ss.

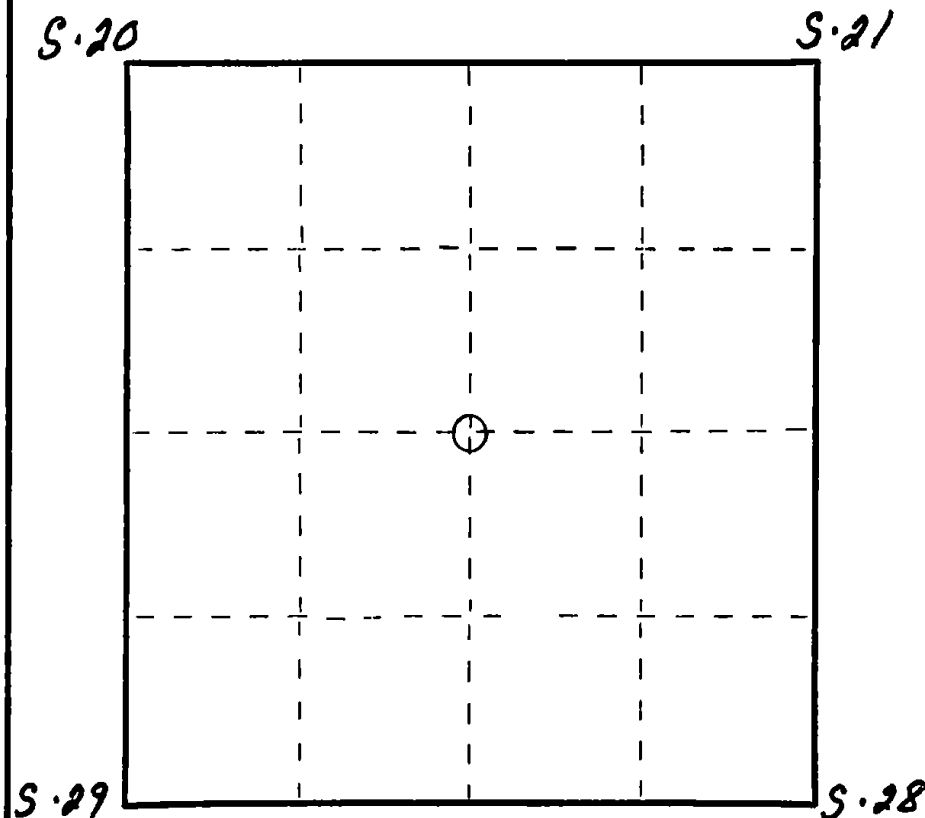
I, Milo E. Stefan, do hereby  
certify that on the 14th day  
of December, 1993, I found  
evidence of the Section  
corner ~~88~~ to Sections 21, 20, 28 & 29  
Township 36, North, Range  
12 East, Fourth Principal Meridian,  
as described hereon; and that from this evidence  
I established a new monument and accessories  
as described hereon to perpetuate the original  
location of this corner.

Resident witnesses:

Myron Smith

Charles Blomdahl

Ted Golden (Local Resident)



○ = Corner monument restored.

# CERTIFIED LAND CORNER RESTORATION

Index No. R-9

History of original corner establishment: By James L. Nowlan, 8/8/1859, at 80.00 Chains, set post  
for Section Corner and two BTs:

24" Hemlock, N40°E, 18 Lks

6" Sugar, S18°W, 10 Lks

Description of corner evidence found:

May 2, 1921 - I.R. Ritter's "Record of Survey" as filed with the Forest County Register  
of Deeds indicates he found evidence of this corner and made two new BTs:

12" Sugar, N80°W, 25 Lks

12" Hemlock, S75°E, 28 Lks

12/14/1993 - Milo E. Stefan and crew found scribed Cedar Post and three iron pipes in  
mound of stone - also pointed out to us by local resident that this was the Section  
Corner.

Description of monument and accessories I established to perpetuate the original location of this corner.

We replaced iron pipes with a 2" x 48" aluminum monument in mound of stone and made four  
new BTs as follows:

8" Sugar Maple, N80°E, 17.06 Feet

4" Sugar Maple, S15°E, 70.51 Feet

6" Sugar Maple, S72°W, 52.79 Feet

6" Sugar Maple, N33°E, 45.65 Feet



Dated at Rhinelander, Wis., this 30th day of December, 1993.

Signature Milo E. Stefan Title Registered Land Surveyor Registration No. 1558  
(County Surveyor, Registered Land Surveyor, or other duly authorized official)

Office of Register of Deeds, County of FOREST, I hereby certify that the within  
instrument was filed in this office for record on the 7th day of FEBRUARY, 1994  
at 1:30 o'clock P. M.

Paul Achenbrenner  
(Register of Deeds)

By Deputy

43612 20 0000

e) Describe any material discrepancy between the location of the corner as restored or reestablished and the location of that corner as previously restored or reestablished by distance and direction. Show the discrepancy on the plan view drawing under (d), above. Show the distances between the corner as previously restored or reestablished and (1) the corner as restored or reestablished, and (2) to at least 2 of the witness monuments shown on the drawing in (d), above.

N/A

(f) Was the corner restored through acceptance of (1) an obliterated evidence location, or, (2) a found perpetuated location?

(2) a found perpetuated location

(g&h) Was the corner reestablished through lost corner proportionate methods? If so, show the method, including the directions and distances to other public land survey corners used as evidence or used for proportioning in determining the corner location?

N/A

(i) I, Milo E. Stefan  
(type or print name) certify that the corner location shown on this record was determined by me or under my direction and control and that this U.S. Public Land Survey Monument Record is correct and complete to the best of my knowledge and belief.



Milo E. Stefan  
Signature

12/30/93  
Date