

Document Number

192903

U.S. PUBLIC LAND SURVEY MONUMENT RECORD

(As Required by WI Adm. Code)

History of original corner establishment and subsequent restorations and descriptions of any record, monument, occupational, testimonial or other evidence considered:

1859 - William E. Daugherty, set original corner post and made the following B.T.'s:

Hemlock, 16", S 52° W, 19 lks., 12.54 feet.

Hemlock, 12", N 14° E, 23 lks., 15.18 feet.

2006 - I found no evidence of original corner. I re-established corner midpoint and on line between the NW cor. and NE cor. of Section 27.

I set a 2" X 30" Forest County Aluminum Monument at this position.

Corner was: (Check All That Apply)

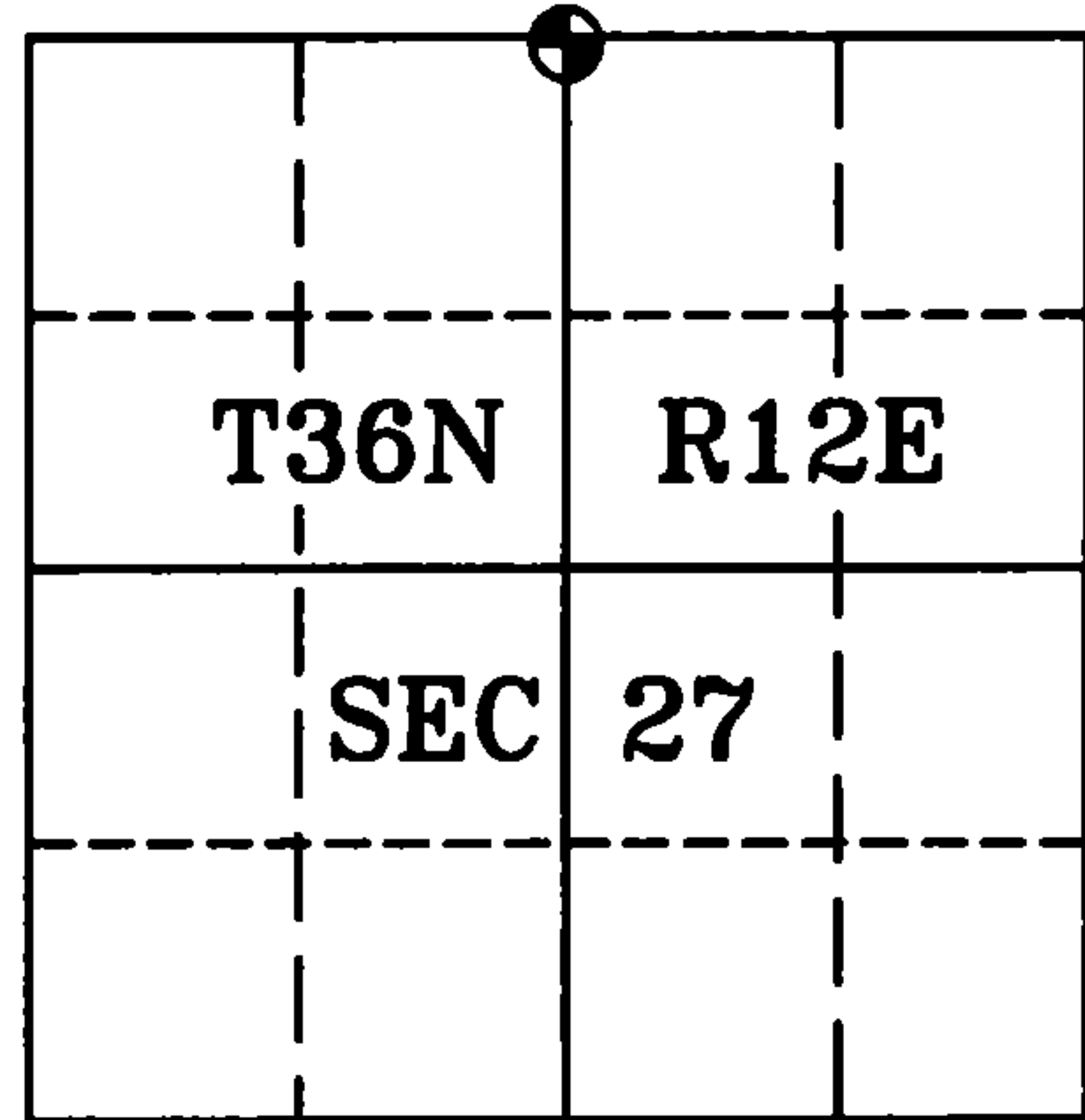
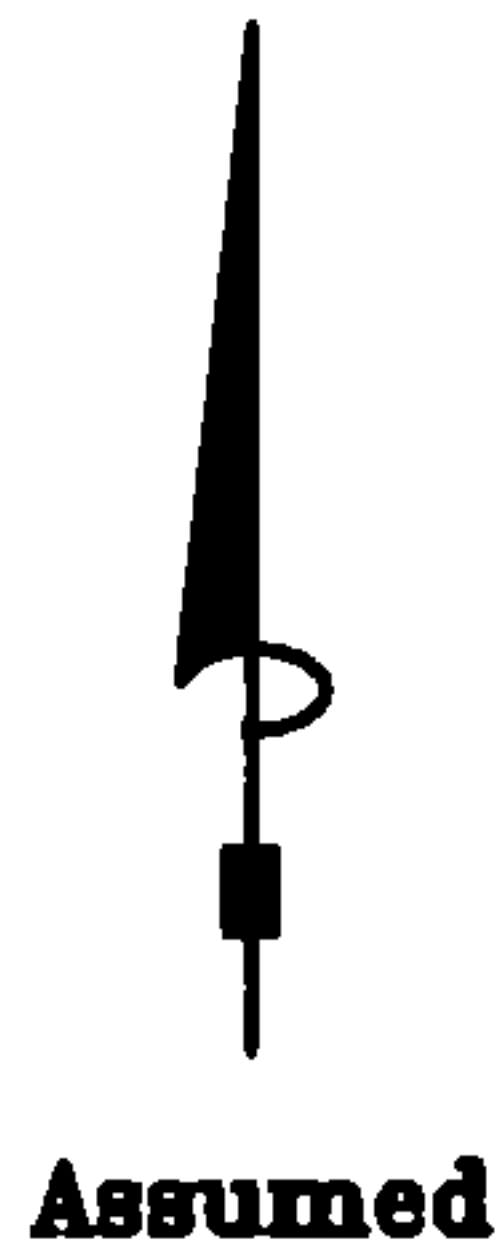
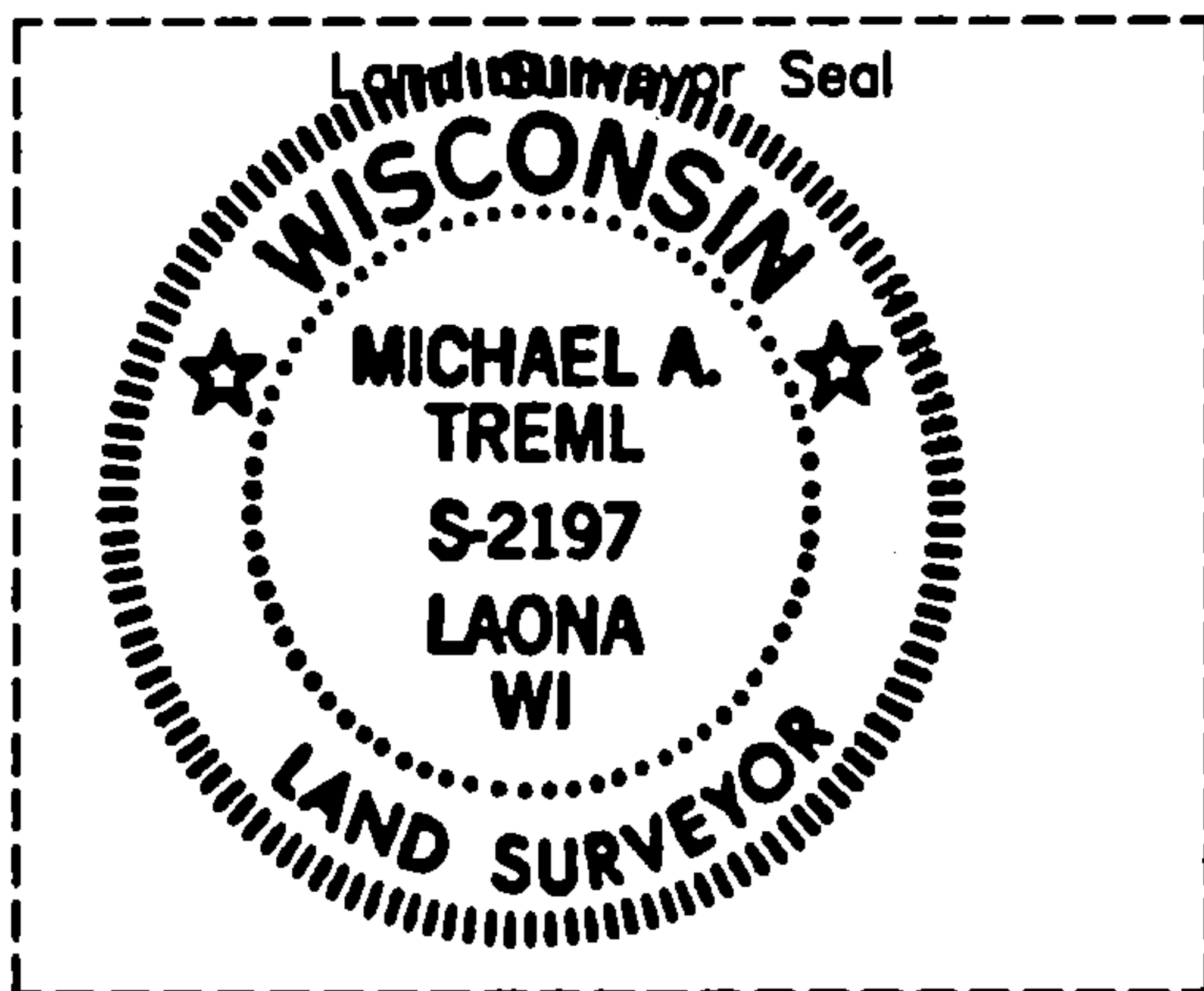
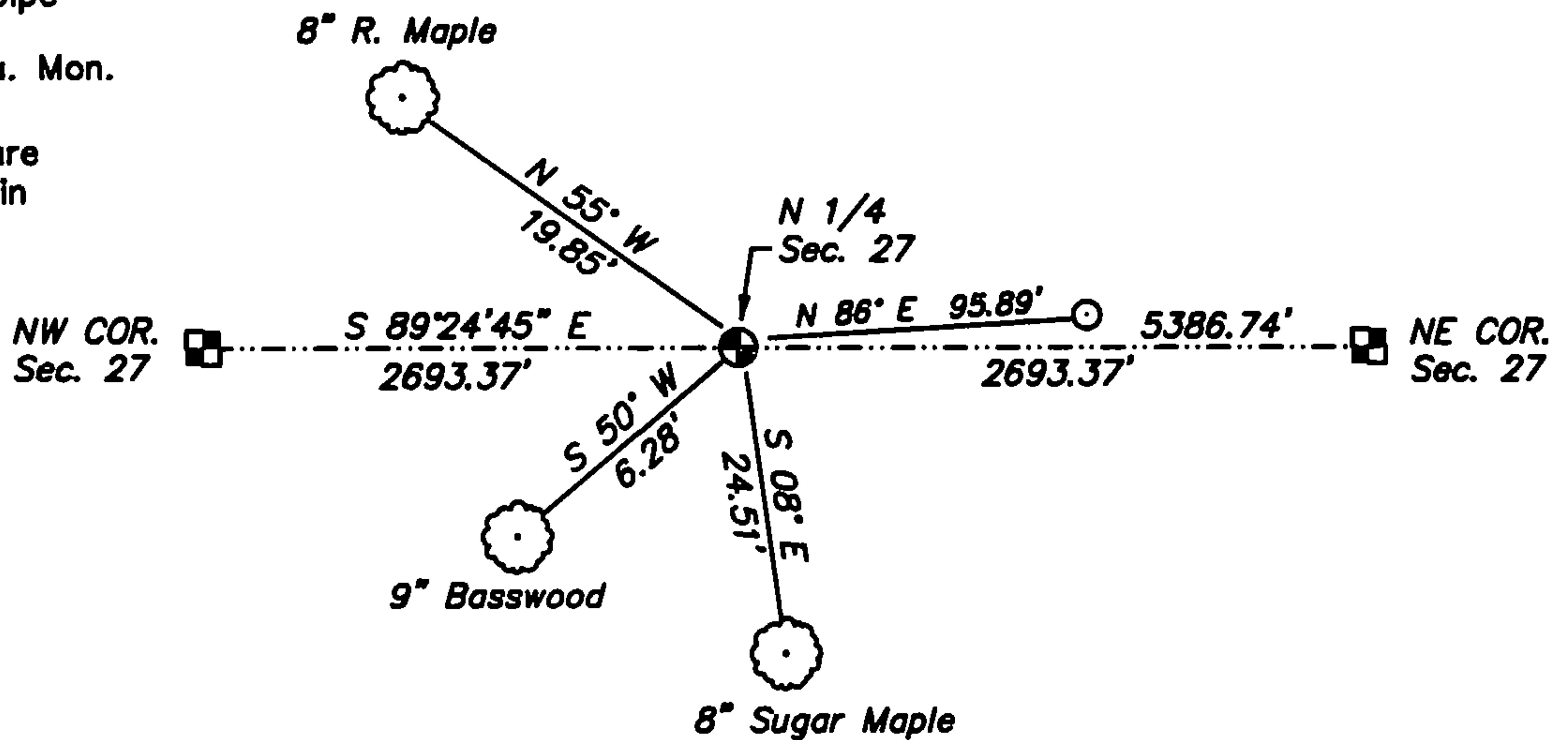
- ☐ Restored through acceptance of an obliterated evidence location.
☐ Restored through acceptance of a found perpetuated location.
☒ Considered a lost corner and reestablished through lost corner proportionate methods (include a plan view drawing showing distances and directions to other Public Land Survey Corners used for proportioning and determining the corner location).
☐ Restored or reestablished in a location that differs from a previous restoration or reestablishment (include a plan view drawing and indicate what was set and/or found).

Describe the monument and accessories used to perpetuate the location of this corner (Include a plan view drawing and indicate what was set and/or found).

LEGEND:

- Existing 2" Alu. Mon.
- Existing 2" iron pipe
- ⊕ Set 2" X 30" Alu. Mon.

Note: All distances are taken to nail in side of tree.



I, Michael A. Trembl, RLS
(type or print name) certify that the corner location shown on this record was determined by me or under my direction and control and that this U.S. Public Land Survey Monument Record is correct and complete to the best of my knowledge and belief.

Michael A. Lenz 11-25-06
Signature Date

The North Quarter corner of
Section 27 T. 36 N., R. 12 E.
Forest County, WI

Index No. R-15

2008

43612220020