

234115

MAY 13 2021

Time: 1:00 P.M.
Vol. Corner Registration
Page Number: 2-3

U.S. PUBLIC LAND SURVEY MONUMENT RECORD

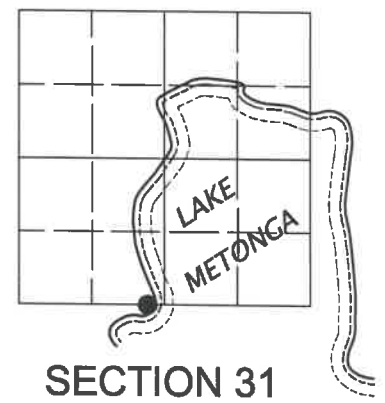
Note: This form is intended and designed to fulfill all requirements of the Wisconsin Administrative Code, Chapter A-E 7.08 U.S. Public Land Monument Record (3)(a)(b)(c)(d)(e)(f)(g)(h)(i). An additional sheet may be added if necessary to conform with said requirements.

(a) CORNER LOCATION:

Meander Corner on the south line of
Section 31, westerly shore of Lake Metonga
Township 36 North
Range 13 East
Town of Lincoln
County of Forest
Wisconsin

COORDINATES

North:
East:
Control Station:
Latitude:
Longitude:
Datum:
Method:



(b) HISTORY OF ORIGINAL CORNER ESTABLISHMENT

Original Surveyor: Alfred Millard; set meander post
Date of Survey: Commenced - May 1858
Completed - June 1858

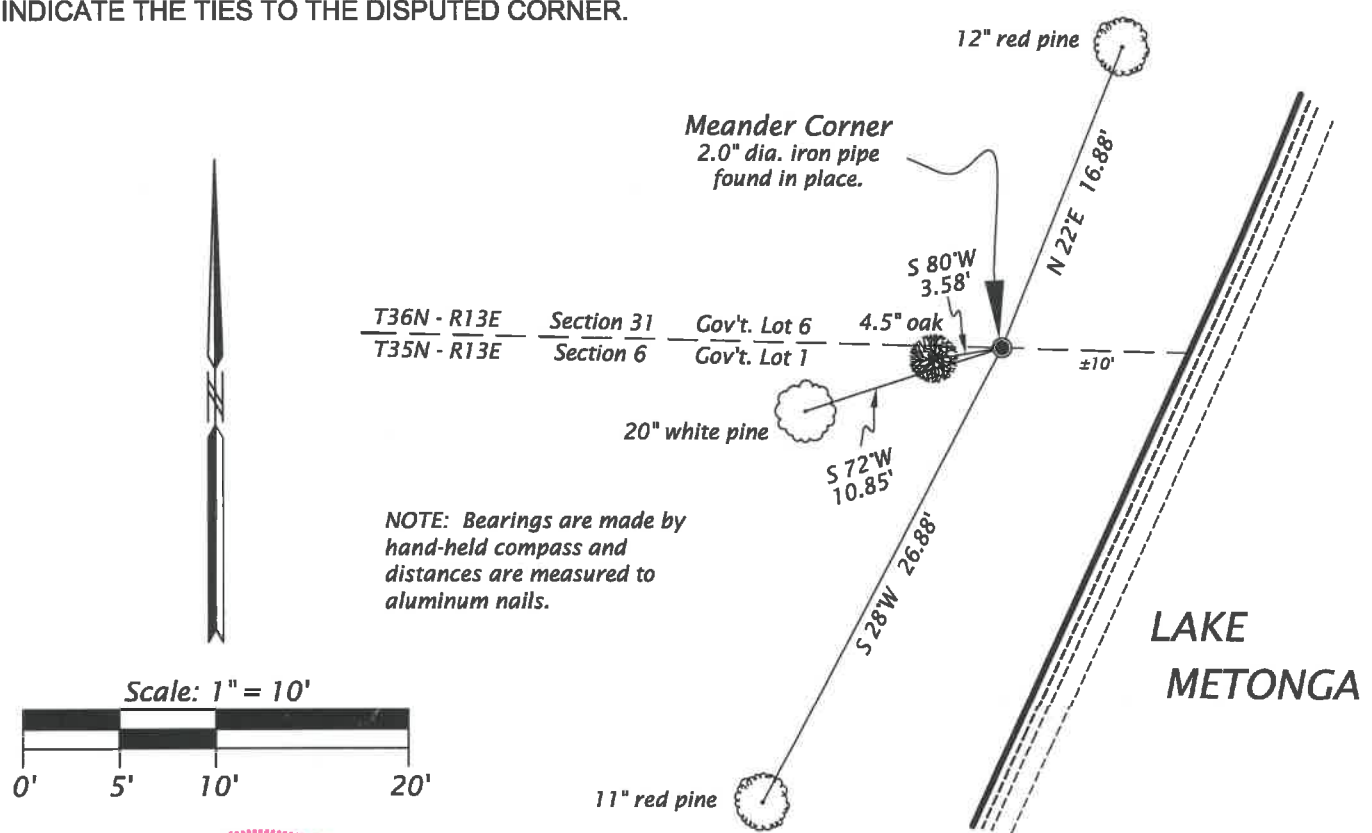
Original B.T.'S - 18" Yellow Pine; S15°W; 80 links
- 18" Yellow Pine; N40°E; 127 links

(f)(g)(h) DESCRIPTION OF MONUMENT FOUND AT THIS CORNER AND IF IT WAS ACCEPTED, STATE ALL EVIDENCE (MATERIAL, TESTIMONIAL, OCCUPATIONAL, PLATS, RECORDS, OTHER MONUMENTS) USED AS A BASIS FOR ESTABLISHING LOCATION. IF NOT ACCEPTED OF IF NOTHING WAS FOUND, STATE EVIDENCE USED AS BASIS FOR ESTABLISHING LOCATION. IF REESTABLISHED THROUGH LOST CORNER PROPORTIONATE METHODS, INDICATE ALL MONUMENTS, DISTANCES AND DIRECTIONS USED TO ESTABLISH. INDICATE TYPE OF MONUMENT AND SIGN POST FOUND OR SET.

October 9, 2007 - Michael A. Treml, Registered Land Surveyor No. S-2197, notes an "existing 1-1/2" iron pipe" for the Meander Corner on his Dwg. No. 743-07.

September 2, 2010 - I, James D. Rein, Registered Land Surveyor No. S-1234, found a 2.0" O.D. iron pipe near the westerly shore of Lake Metonga and accept its location as said Meander Corner. I made four (4) new scribed bearing trees as shown in the sketch below.

(c)(d)(e) PLAN VIEW OF CORNER WITH TIES TO AT LEAST 4 WITNESS MONUMENTS. IF IN DISAGREEMENT WITH PREVIOUSLY ESTABLISHED CORNER, SHOW THE DISTANCE BETWEEN THE TWO CORNERS AND ALSO INDICATE THE TIES TO THE DISPUTED CORNER.



(i) I, JAMES D. REIN, REGISTERED LAND SURVEYOR NO. S-1234
HEREBY CERTIFY THAT THE CORNER LOCATION ON THIS RECORD
WAS DETERMINED BY ME OR UNDER MY DIRECTION AND CONTROL
AND THAT THIS U.S. PUBLIC LAND SURVEY MONUMENT RECORD IS
CORRECT AND COMPLETE TO THE BEST OF MY KNOWLEDGE AND
BELIEF.

SIGNATURE: [Signature]
DATE: Nov. 2nd, 2010

43613310025

INDEX NO. 2-3