

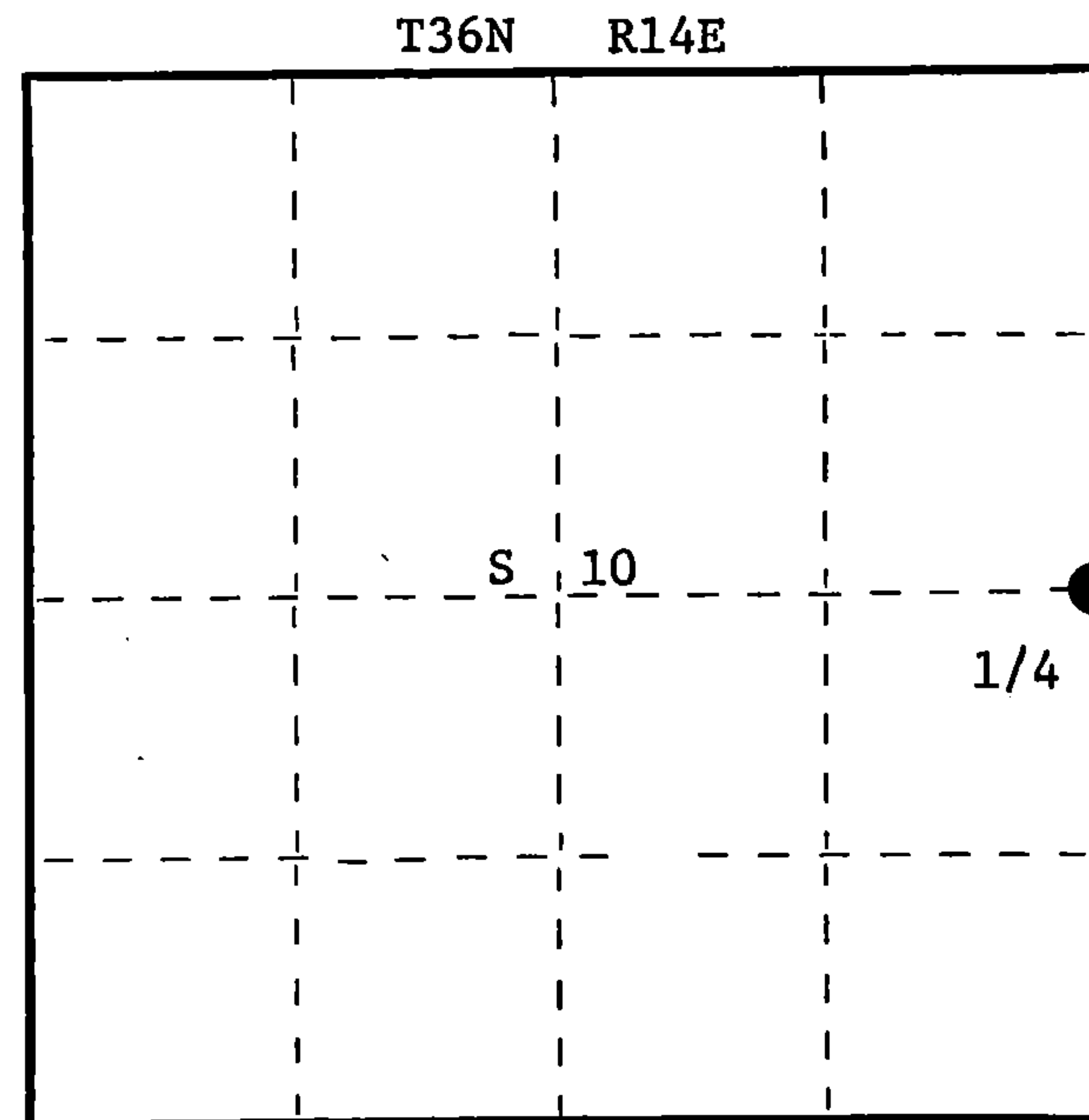
State of Wisconsin }
County of Forest } ss.

I Glen Barker, do hereby
certify that on the 6th day
of November, 1985, I found
evidence of the Quarter
corner of Sections 10 & 11
Township 36, North, Range
14 East, Fourth Principal Meridian,
as described hereon; and that from this evidence
I established a new monument and accessories
as described hereon to perpetuate the original
location of this corner.

Resident witnesses:

N. Spiess

H. Wagoner



CERTIFIED LAND CORNER RESTORATION

US Public Land Survey

History of original corner establishment:

Original corner established by James McBride, deputy surveyor in 1859. From which
Birch 10" bears N31W 22 links
Hemlock 6" S67E 24 links

Description of corner evidence found:

Recovered an old 2" squared cedar post being held in place by wire on a tree.
Checked original call south to swamp. Original calls north between sections 10 & 11,
38.50 leave swamp, 40.0 set 1/4 corner. On measuring south to swamp from old post
1.50 chains (+ -).
Distance to section corner 2-3-10-11 is 2642.59 ft.

Description of monument and accessories I established to perpetuate the original location of this corner.
Replaced old post with a 2 1/4" aluminum Forest County monument with 3" diameter alloy
cap stamped:

Monument projects 4" above ground.

Marked NBTs:

White Birch	9"	N31W	27.67'
White Birch	8"	N65E	22.06'
Cedar	4"	S18E	10.91'
Bl. Spruce	8"	S71W	37.90'

T36N R14E
1/4 S10 S11
1985
S1682

Dated at Rhineland, Wis., this 23rd day of December, 1985.

Signature Glen Barker Title Registered Land Surveyor Registration No. S1682
(County Surveyor, Registered Land Surveyor, or other duly authorized official)

Office of Register of Deeds, County of Forest, I hereby certify that the within
instrument was filed in this office for record on the 1st day of May, 1986
at 10:30 o'clock A. M.

Paul Aschenbrenner
(Register of Deeds)

By Deputy

(c) Describe any material discrepancy between the location of the corner as restored or reestablished and the location of that corner as previously restored or reestablished by distance and direction. Show the discrepancy on the plan view drawing under (d), above. Show the distances between the corner as previously restored or reestablished and (1) the corner as restored or reestablished, and (2) to at least 2 of the witness monuments shown on the drawing in (d), above.

(f) Was the corner restored through acceptance of (1) an obliterated evidence location, or, (2) a found perpetuated location?

Perpetuated Location.

(g&h) Was the corner reestablished through lost corner proportionate methods? If so, show the method, including the directions and distances to other public land survey corners used as evidence or used for proportioning in determining the corner location?

(i) I, Glen Barker
(type or print name) certify that the corner location shown on this record was determined by me or under my direction and control and that this U.S. Public Land Survey Monument Record is correct and complete to the best of my knowledge and belief.

Signature

Date

Affix Land Surveyor Seal





Stock No. 26273

158096

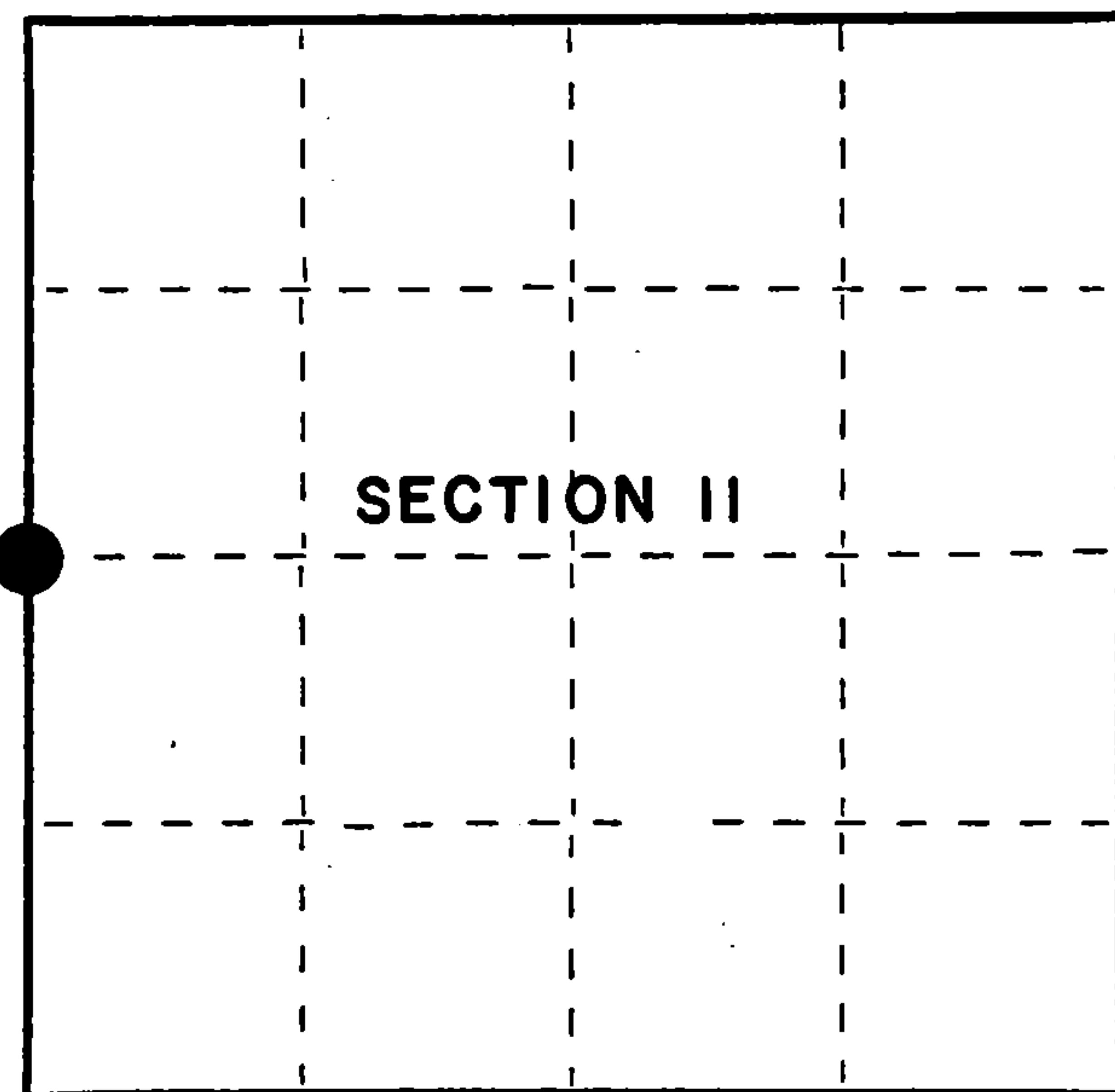
State of Wisconsin

County of Forest

ss.

I Gary L. Pisoni, do hereby
 certify that on the 30th day
 of August, 1994, I found
 evidence of the West Quarter
 corner of Section 11
 Township 36, North, Range
14 East, Fourth Principal Meridian,
 as described hereon; and that from this evidence
 I established a new monument and accessories
 as described hereon to perpetuate the original
 location of this corner.

Resident witnesses:



● = Corner monument restored.

CERTIFIED LAND CORNER RESTORATION

Index No. G-17

History of original corner establishment:

Original Government Survey in 1859 by James McBride, deputy surveyor. North between Sections 10 and 11 at 40.00 chains, set Quarter Section post from which the following bear: Birch, 10", N 31°W, 22 lks; Hemlock, 6", S 67°E, 24 lks.

In 1985, Glen Barker RLS, recovered an old 2" squared cedar post being held in place by wire on a tree. He accepted the cedar post as the best available evidence for restoring the corner position. Replaced old post with a 2½" dia. aluminum Forest County monument from which the following bear:

White Birch	9"	N 31°W	27.67 feet	White Birch	8"	N 65°E	22.06 feet
Cedar	4"	S 18°E	10.91 feet	Black Spruce	8"	S 71°W	37.90 feet

Description of corner evidence found:

Found the monument and bearing trees as described above

Cedar	5"	S 17°E	10.93 feet
Black Spruce	7"	S 70°W	37.53 feet

Description of monument and accessories I established to perpetuate the original location of this corner.

Blazed and scribed the following new bearing trees: (Measurements taken to a nail in side of tree)

Cedar	8"	N 31°E	34.78 feet
Black Spruce	10"	S 64°E	31.05 feet
Steel sign post		N 41°W	1.35 feet

Dated at Iron River, MI, this 12th day of June, 1995.

Signature Gary L. Pisoni Title Land Surveyor Registration No. S-1634
 (County Surveyor, Registered Land Surveyor, or other duly authorized official)

Office of Register of Deeds, County of Forest, I hereby certify that the within
 instrument was filed in this office for record on the 20th day of March, 1997
 at 1:30 o'clock P. M.

(Register of Deeds)

By Glen Barker Deputy

43014102000

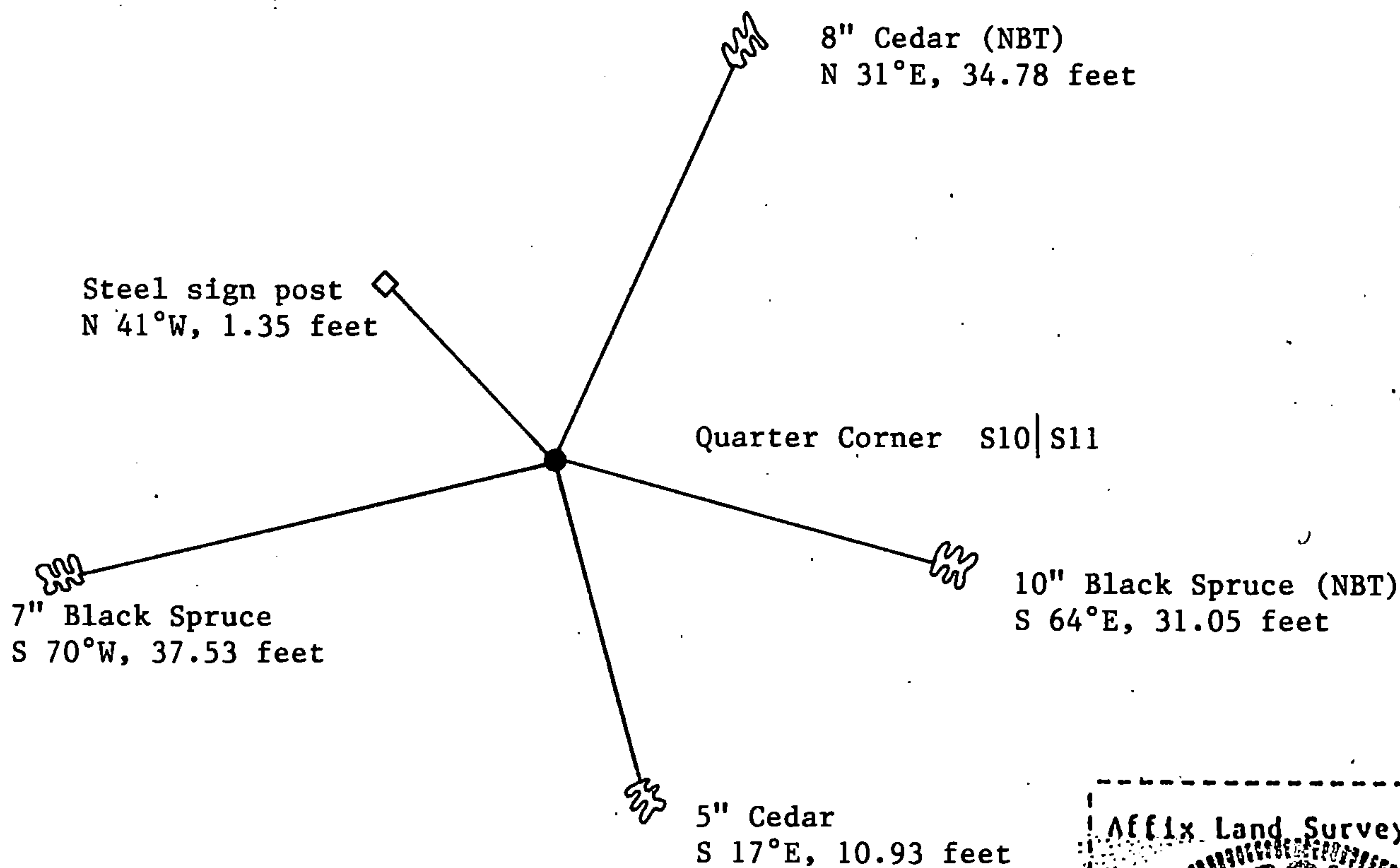
d) Describe any material discrepancy between the location of the corner as restored or reestablished and the location of that corner as previously restored or reestablished by distance and direction. Show the discrepancy on the plan view drawing under (d), above. Show the distances between the corner as previously restored or reestablished and (1) the corner as restored or reestablished, and (2) to at least 2 of the witness monuments shown on the drawing in (d), above.

None

(f) Was the corner restored through acceptance of (1) an obliterated evidence location, or, (2) a found perpetuated location?

Restored through acceptance of a found perpetuated location.

(g&h) Was the corner reestablished through lost corner proportionate methods? If so, show the method, including the directions and distances to other public land survey corners used as evidence or used for proportioning in determining the corner location?



(i) I, Gary L. Pisoni
(type or print name) certify that the corner location shown on this record was determined by me or under my direction and control and that this U.S. Public Land Survey Monument Record is correct and complete to the best of my knowledge and belief.

Signature

Date

Survey requested by:

District Ranger

Date

