



Stock No. 26273

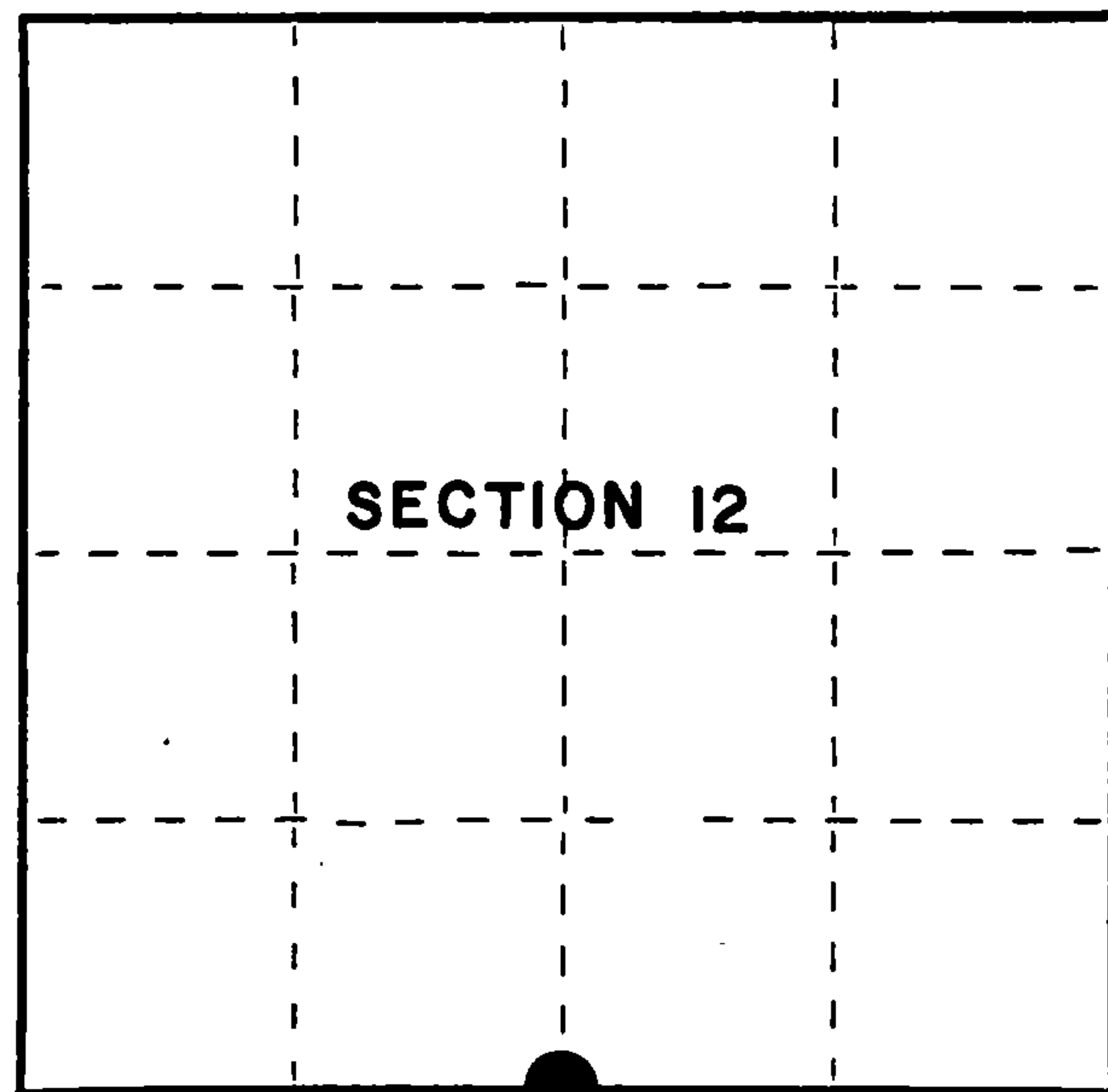
158100

State of Wisconsin }  
County of Forest } ss.

I Gary L. Pisoni, do hereby  
certify that on the 17th day  
of August, 1993, I found  
evidence of the South Quarter  
corner of Section 12  
Township 36, North, Range  
14 East, Fourth Principal Meridian,  
as described hereon; and that from this evidence  
I established a new monument and accessories  
as described hereon to perpetuate the original  
location of this corner.

Resident witnesses:

.....  
.....  
.....



● = Corner monument restored.

## CERTIFIED LAND CORNER RESTORATION

Index No. J-23

History of original corner establishment:

Original Government Survey in 1859 by James McBride, deputy surveyor. West corrected  
between Sections 12 and 13 at 40.05 chains, set Quarter Section post from which the  
following bear: Cedar, 8", N 22°W, 7 lks; Tamarack, 10", S 05°E, 10 lks.

Description of corner evidence found:

No original corner evidence found.

I re-established the corner position at proportionate distances and on line  
between the Southeast and the Southwest Section Corners of Section 12.

Description of monument and accessories I established to perpetuate the original location of this corner.

At the corner position, set a 2½" x 36" aluminum pipe monument with an aluminum cap  
stamped; T36N, R14E, 1/4, S.12, S.13 1993, S-1634; from which the following new blazed  
and scribed bearing trees bear: (all measurement taken to a nail in side of tree

Steel sign post	6'	S 29°W	1.05 feet
Steel sign post	6'	North	1.05 feet
Steel sign post	6'	N 72°E	0.92 feet

Dated at Iron River, MI, ~~Wis.~~, this 12th day of June, 1995

Signature Gary L. Pisoni Title Land Surveyor Registration No. S-1634  
(County Surveyor, Registered Land Surveyor, or other duly authorized official)

Office of Register of Deeds, County of Forest, I hereby certify that the within  
instrument was filed in this office for record on the 20th day of March, 1997  
at 1:30 o'clock P M.

(Register of Deeds)

By Gail J. Jurewicz Deputy

43614120020

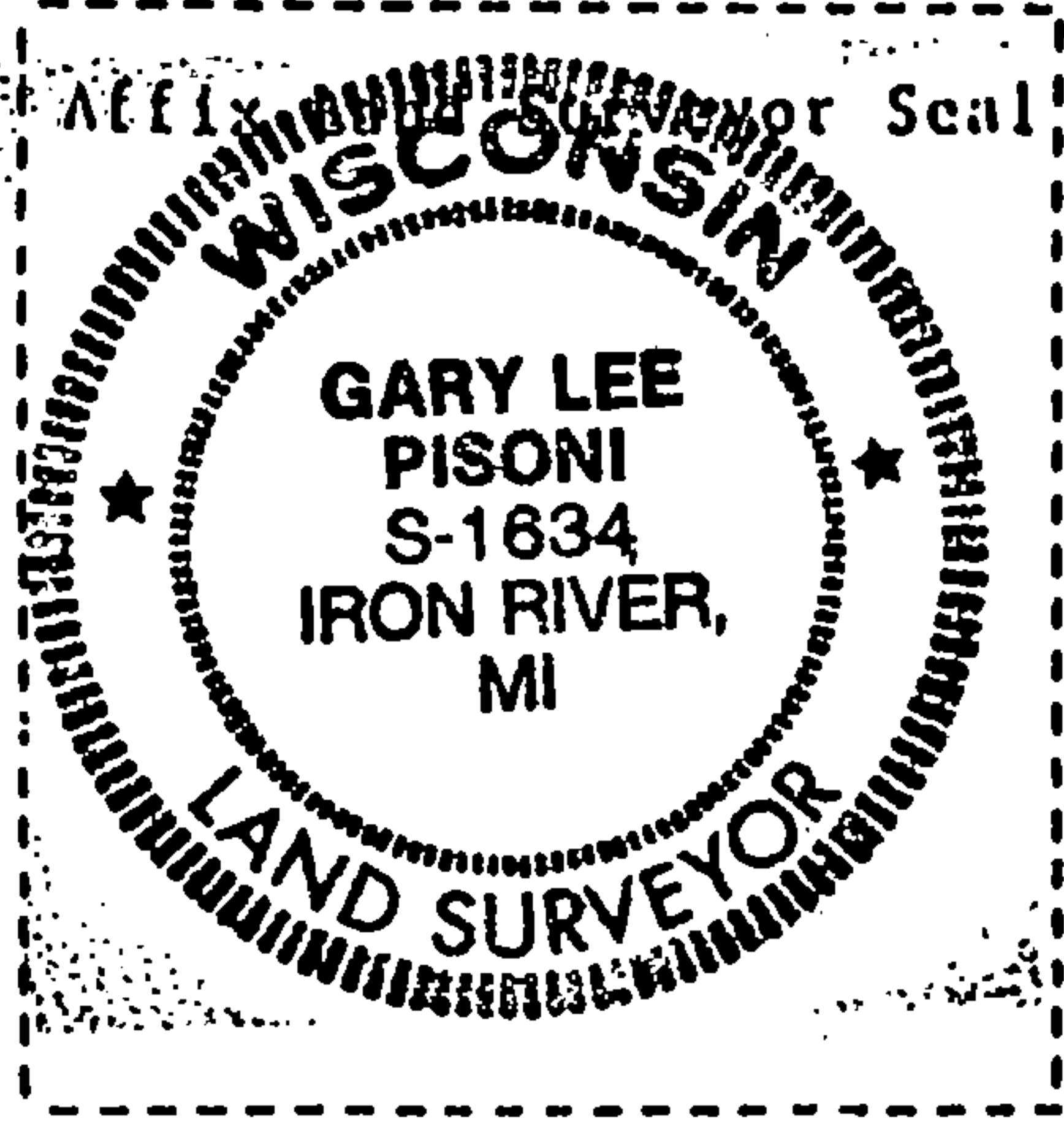
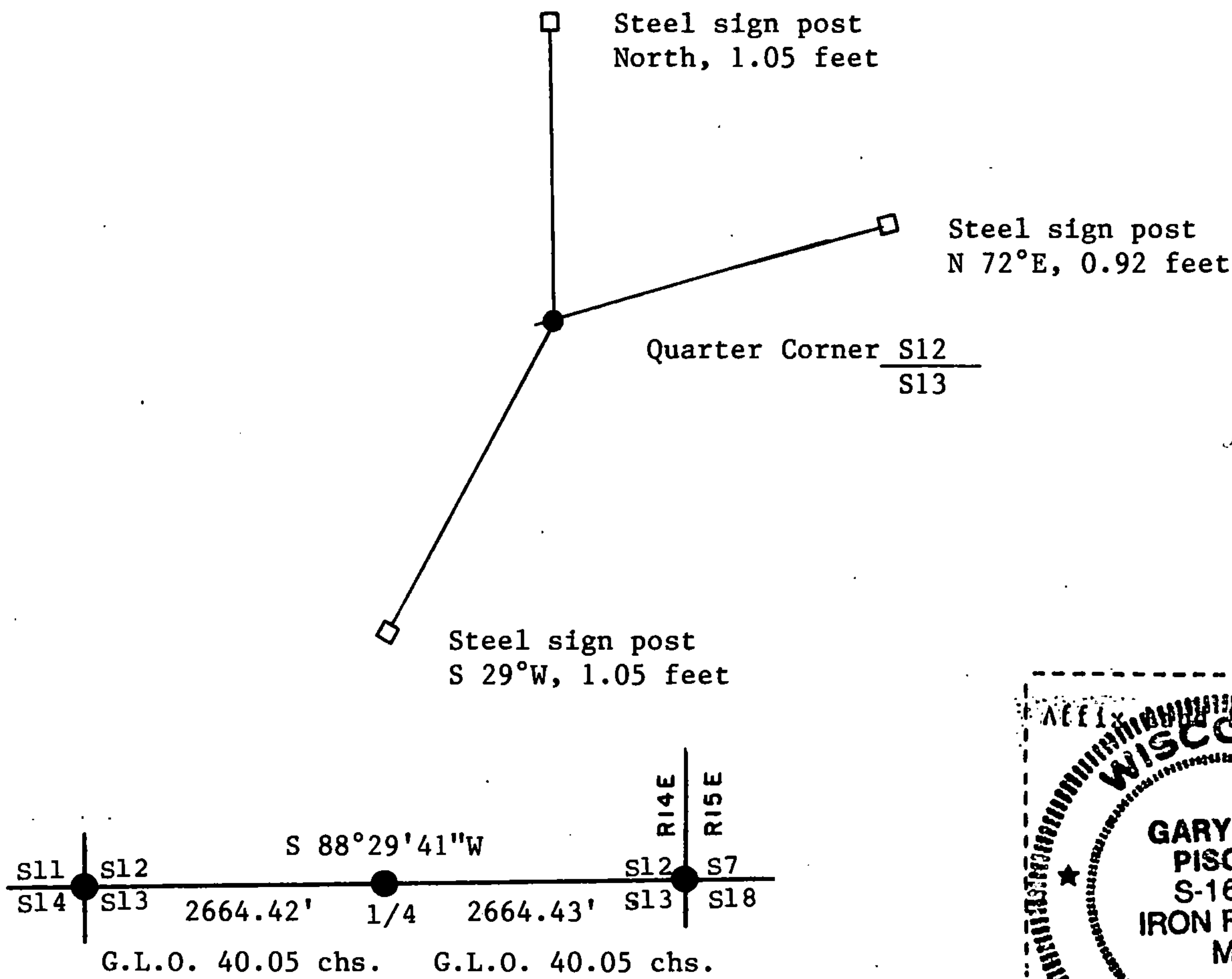
e) Describe any material discrepancy between the location of the corner as restored or reestablished and the location of that corner as previously restored or reestablished by distance and direction. Show the discrepancy on the plan view drawing under (d), above. Show the distances between the corner as previously restored or reestablished and (1) the corner as restored or reestablished, and (2) to at least 2 of the witness monuments shown on the drawing in (d), above.

None

(f) Was the corner restored through acceptance of (1) an obliterated evidence location, or, (2) a found perpetuated location?

(g/h) Was the corner reestablished through lost corner proportionate methods? If so, show the method, including the directions and distances to other public land survey corners used as evidence or used for proportioning in determining the corner location?

Re-established through lost corner proportionate methods.



(i) I, Gary L. Pisoni  
(type or print name) certify that the corner location shown on this record was determined by me or under my direction and control and that this U.S. Public Land Survey Monument Record is correct and complete to the best of my knowledge and belief.

Gary L. Pisoni 6-24-75  
Signature Date

Survey requested by: \_\_\_\_\_  
District Ranger Date