

CERTIFIED LAND CORNER RESTORATION

State of Wisconsin }
County of Forest } ss.

I Milo E. Stefan, do hereby certify that on the day of , 19 ,
I found evidence of the Southwest corner of Section 1
Township 36 North, Range 15 East, Fourth Principal Meridian, as described
hereon; and that from this evidence I established a new monument and accessories as described hereon to per-
petuate the original location of this corner:

Description of original monument and accessories and subsequent restorations:

North between Sections 11 and 12
80.00 chains set section corner post
Elm 8", N75E, 26 links
Elm 6", S47E, 8 links
Elm 8", S48W, 33 links
Elm 10", N45W, 43 links

Description of corner evidence found:

Original NE "BT" standing, 24" DBH with BT blazed closed and face blaze open
Original SE "BT" a stump hole
Original SW "BT" a decayed stump and hole
Original NW "BT" a decayed stump.
Newly blazed Hemlock (30-40 years ago) NE and SE of corner position

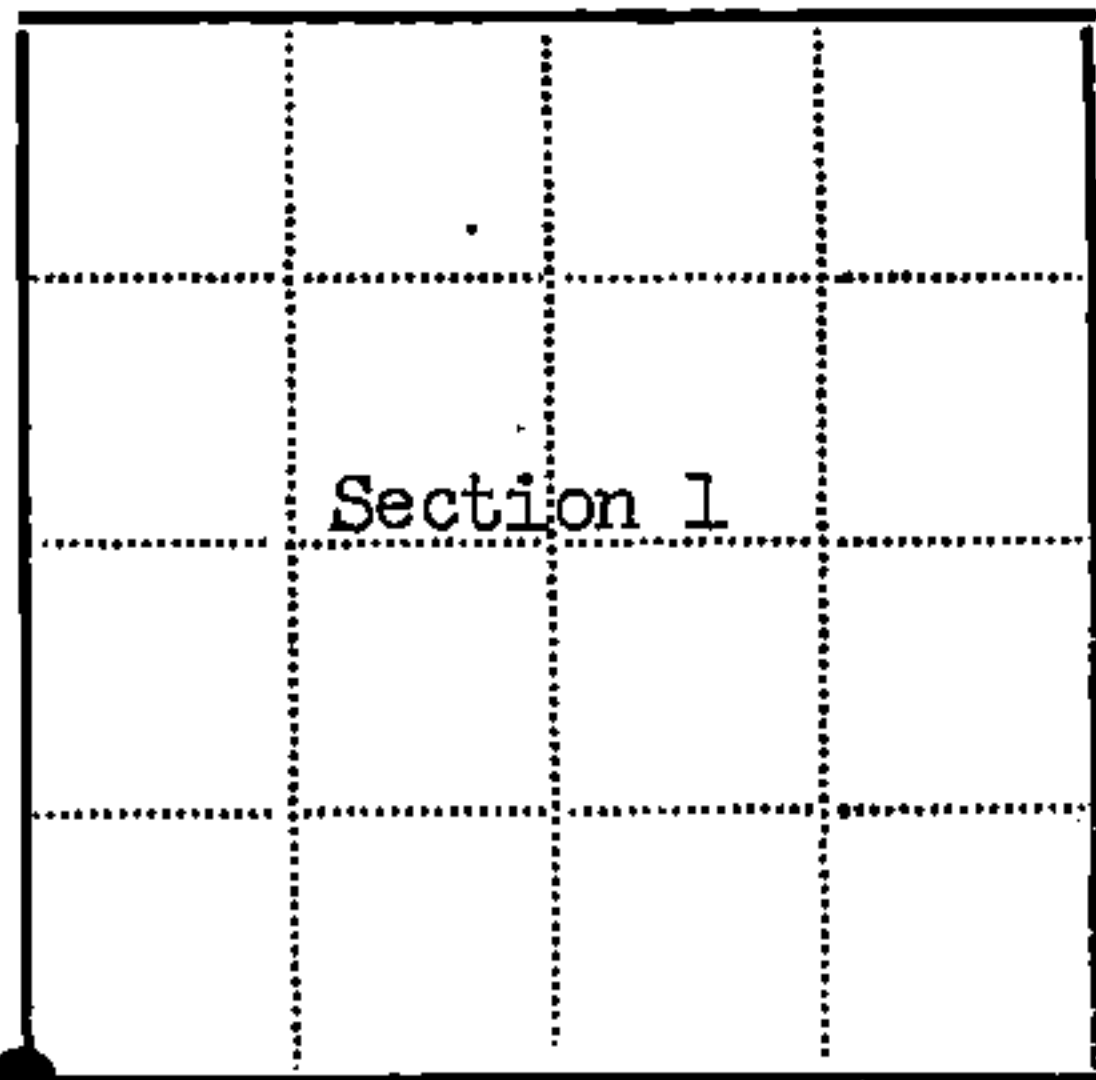
Description of monument and accessories I established to perpetuate the location of this corner:

Placed a 2" x 30" aluminum monument, 24" in ground supported by mound of stone.

References:

Red Maple 6", N66E, 15.45 feet
Hemlock 14", S51E, 10.66 feet
Sugar Maple 8", S19W, 26.40 feet
Sugar Maple 6", N6W, 26.40 feet
Steel sign post

DOCUMENT NO.
124200



● - Corner monument restored
□ -

Resident witnesses.....

Dated at Laona Wisconsin, this 5th day of October
19 81.

Signature Milo E. Stefan Title Land Surveyor
(County Surveyor, Registered Land Surveyor, or other duly authorized official)

Surveyors Registration No. 1558

Office of Register of Deeds County of Forest

I hereby certify that the within instrument was filed in this office for record
on the 13th day of September 19 83, and was filed in Book
No. Page No. of County Records.

Signature Eugene Stetson Title Register of Deeds

Township 36 North, Range 15 East, Section 1, Index No. E-21, Page No.

432615 02 0000

E
21

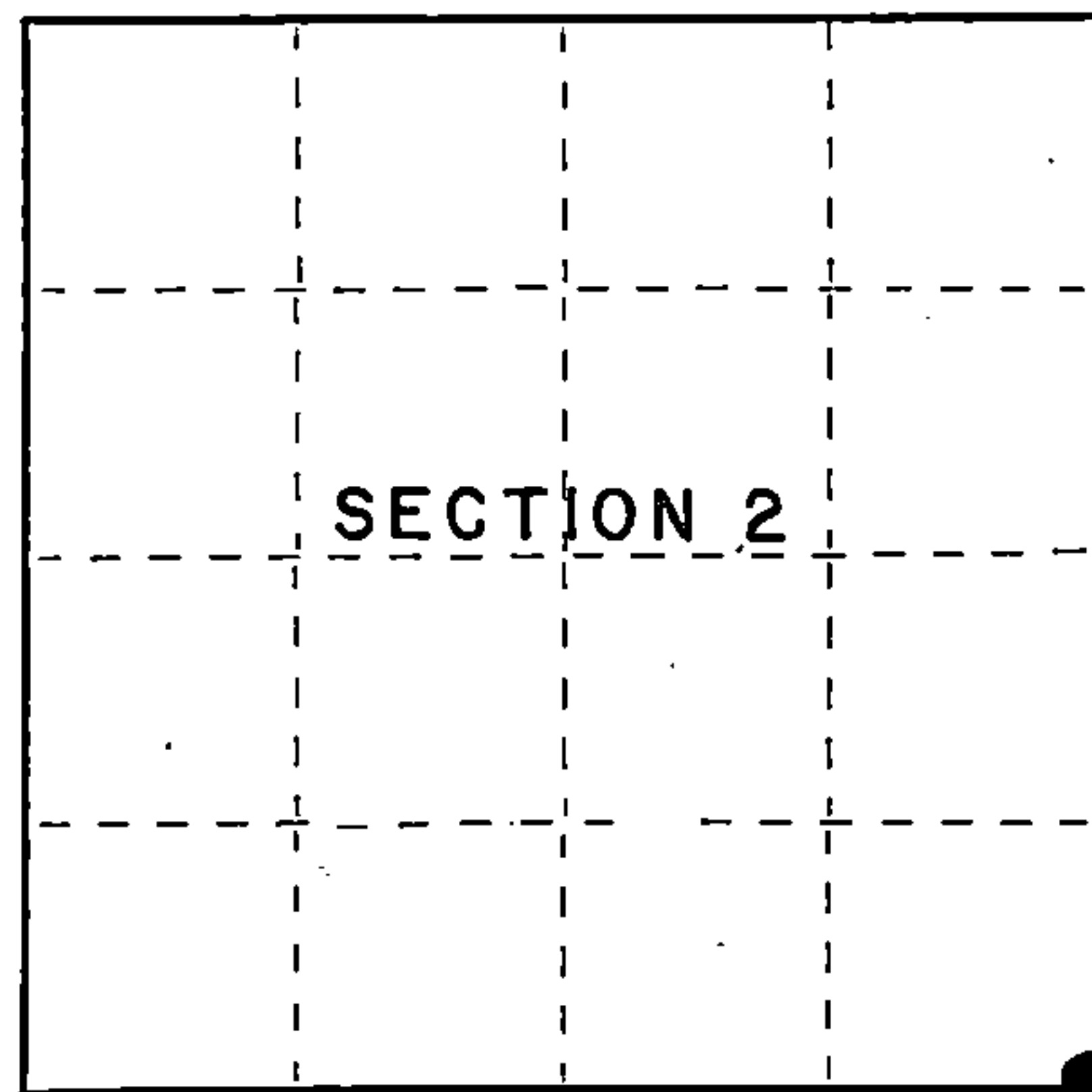
Stock No. 26273

158112

State of Wisconsin }
County of Forest } ss.

I Gary L. Pisoni, do hereby
certify that on the 10th day
of May, 1994, I found
evidence of the Southeast Section
corner of Section 2
Township 36, North, Range
15 East, Fourth Principal Meridian,
as described hereon; and that from this evidence
I established a new monument and accessories
as described hereon to perpetuate the original
location of this corner.

Resident witnesses:



● = Corner monument restored.

CERTIFIED LAND CORNER RESTORATION

Index No. E-21

History of original corner establishment:

Original Government Survey in 1859 by James McBride, deputy surveyor. North between Sections 11 and 12, at 80.00 chains, set Section corner post to Sections 1, 2, 11, 12 from which the following bear: Elm, 8", N 75° E, 26 lks; Elm, 6", S 47° E, 8 lks; Elm, 8", S 48° W, 33 lks; Elm, 10", N 45° W, 43 lks.

In 1981, Milo E. Stefan, RLS, with the U.S.F.S., restored the corner position from the original bearing trees and set a 2" x 30" aluminum pipe monument with an aluminum cap and blazed and scribed the following bearing trees:

Red Maple 6"	N 66° E	15.45 feet	Hemlock 14"	S 51° E	10.66 feet
Sugar Maple 8"	S 19° W	26.40 feet	S. Maple 6"	N 06° W	26.40 feet
Description of corner evidence found:			Steel sign post	N 85° E	1.7 feet

Found monument as described above and the following bearing trees:

Red Maple 7"	N 63° E	15.34 feet
Sugar Maple 9"	S 20° W	26.30 feet
Sugar Maple 7"	N 11° W	26.51 feet
Steel sign post	N 85° E	1.70 feet

Description of monument and accessories I established to perpetuate the original location of this corner.

Blazed and scribed the following new bearing tree (measurements taken to a nail in side of tree)

Sugar Maple 10"	S 88° W	21.50 feet
-----------------	---------	------------

Dated at Iron River, MI, this 8th day of April, 1995.

Signature Gary L. Pisoni Title Land Surveyor Registration No S-1634
(County Surveyor, Registered Land Surveyor, or other duly authorized official)

Office of Register of Deeds, County of Forest, I hereby certify that the within instrument was filed in this office for record on the 10th day of March, 1997 at 1:30 o'clock P M.

(Register of Deeds)

By Paul J. Jankiewicz Deputy

43615020000

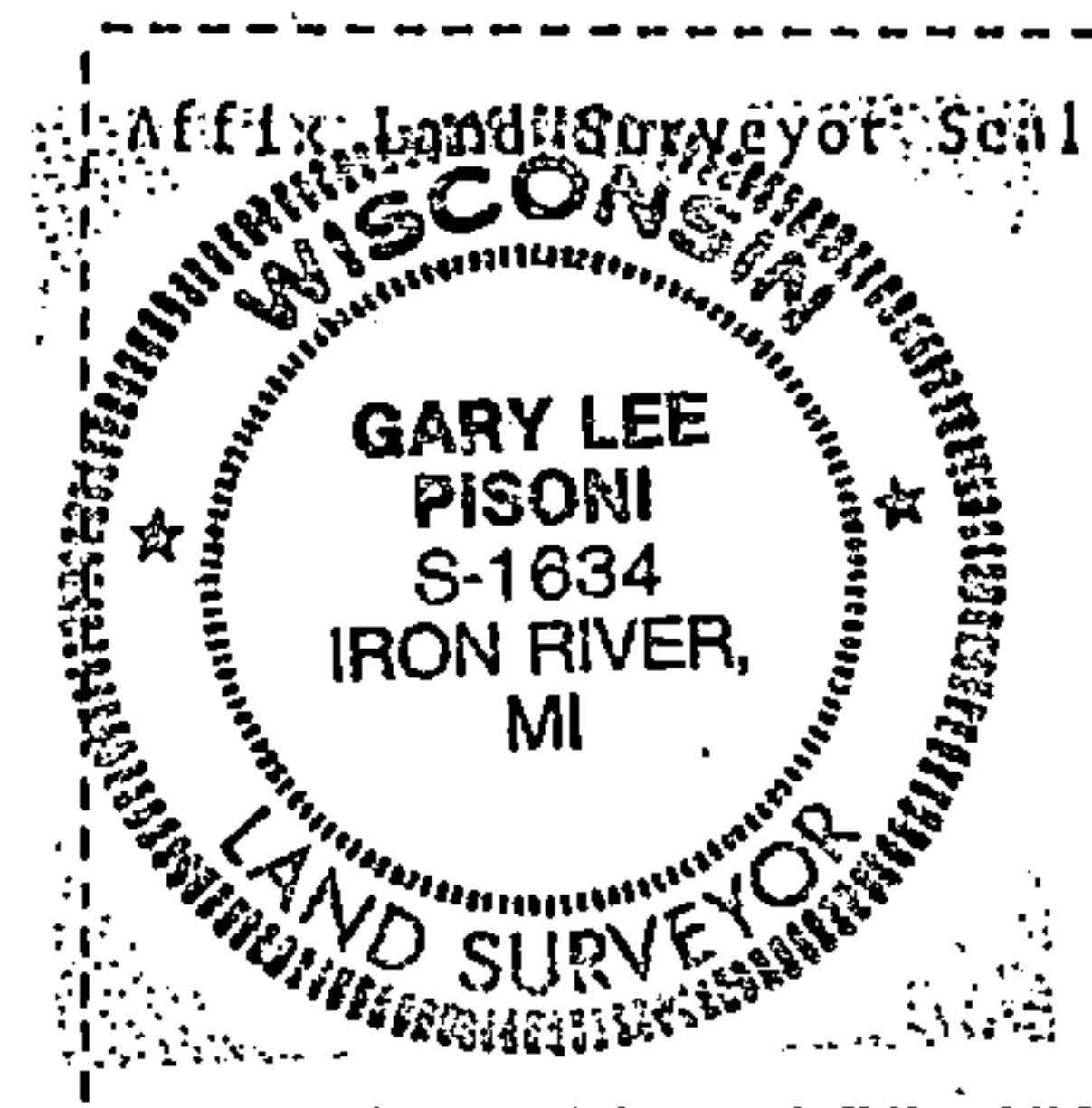
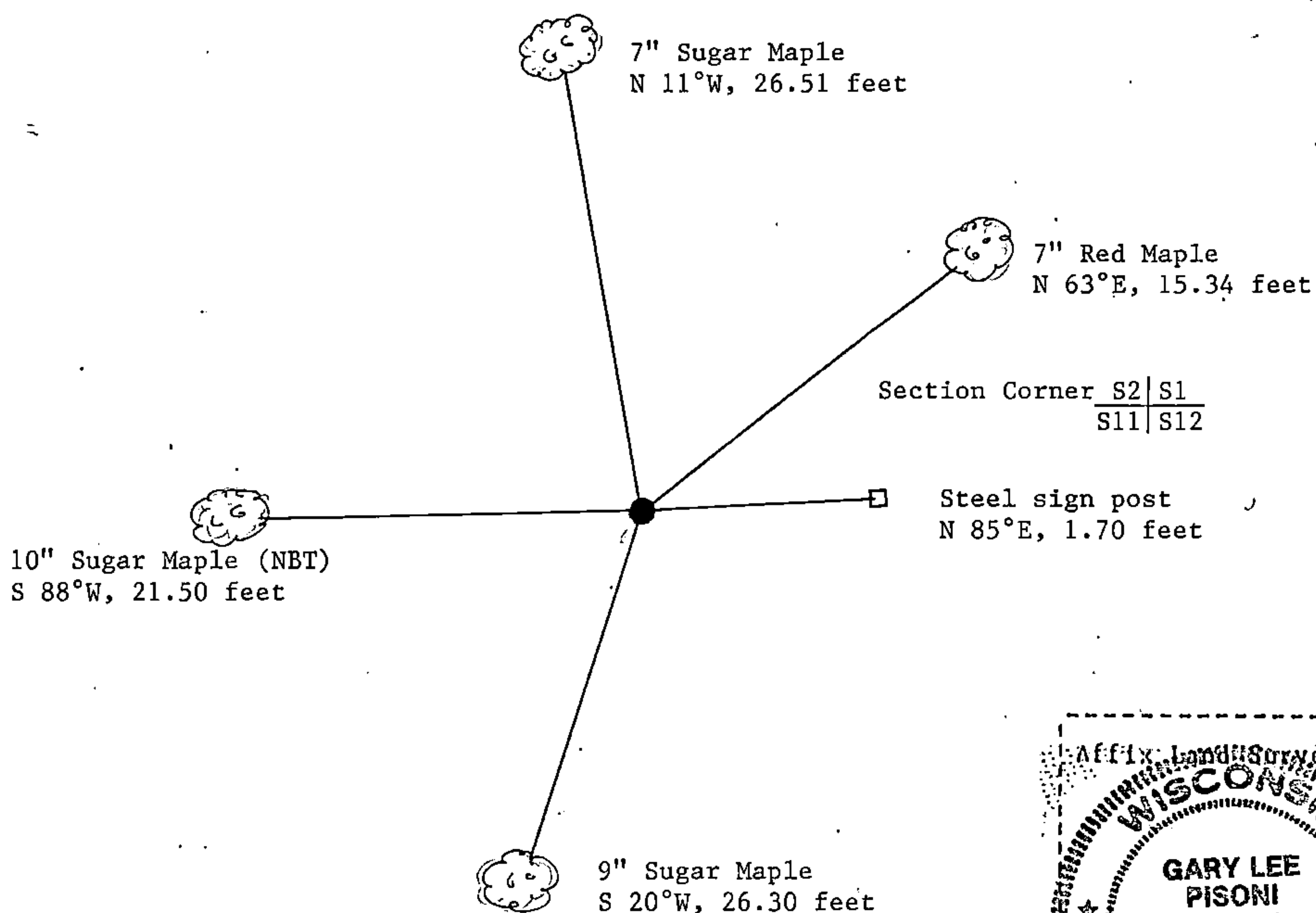
- (d) Describe any material discrepancy between the location of the corner as restored or reestablished and the location of that corner as previously restored or reestablished by distance and direction. Show the discrepancy on the plan view drawing under (d), above. Show the distances between the corner as previously restored or reestablished and (1) the corner as restored or reestablished, and (2) to at least 2 of the witness monuments shown on the drawing in (d), above.

None

- (f) Was the corner restored through acceptance of (1) an obliterated evidence location, or, (2) a found perpetuated location?

Restored through acceptance of a found perpetuated location.

- (g) Was the corner reestablished through lost corner proportionate methods? If so, show the method, including the directions and distances to other public land survey corners used as evidence or used for proportioning in determining the corner location?



- (i) I, Gary L. Pisoni
[Type or print name] certify that the corner location shown on this record was determined by me or under my direction and control and that this U.S. Public Land Survey Monument Record is correct and complete to the best of my knowledge and belief.

Signature

Date

Survey requested by:

District Ranger

Date