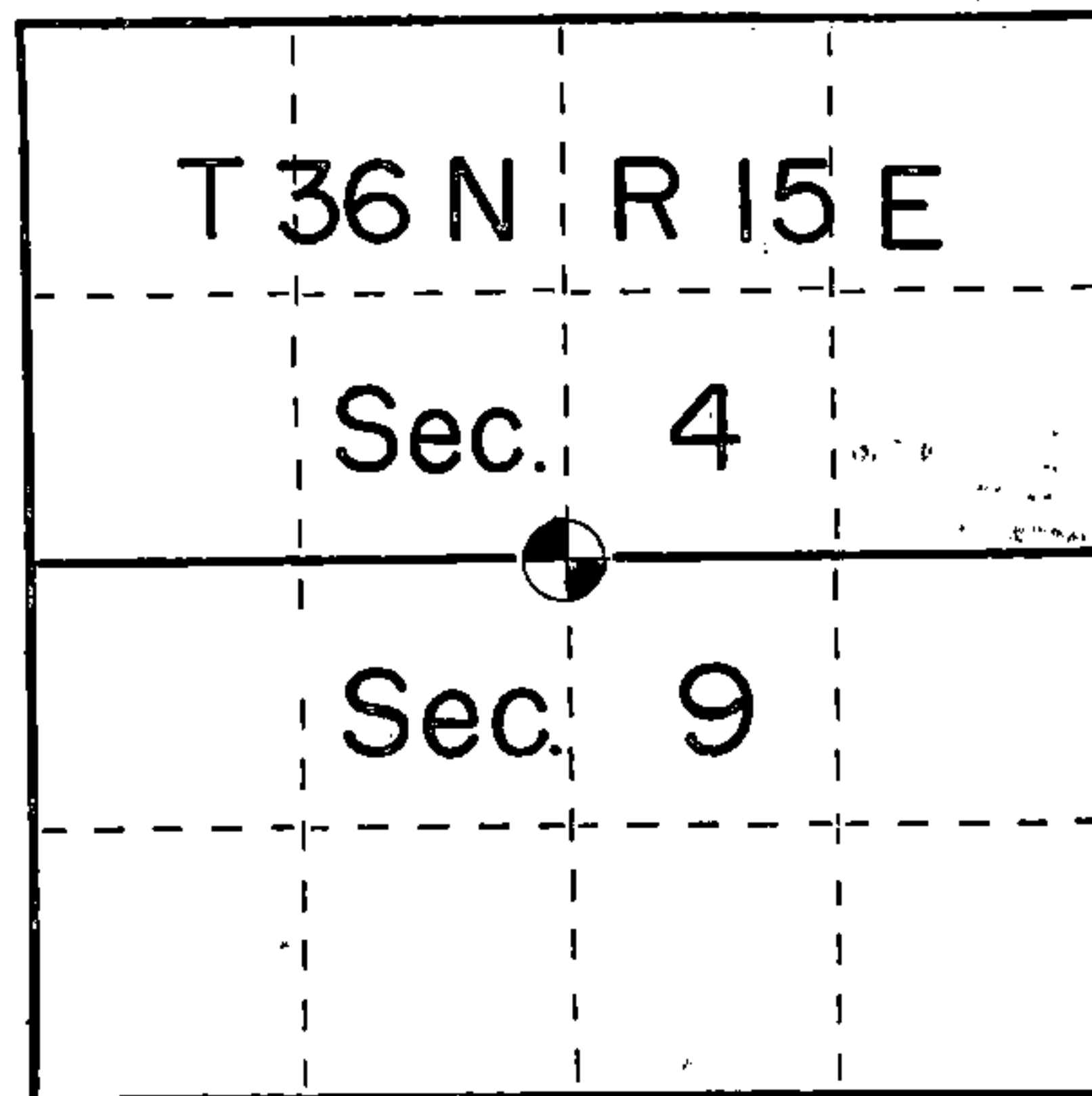


U. S. PUBLIC LAND SURVEY MONUMENT RECORD

INSTRUCTIONS: This record shall show the location of the corner and shall include all of the following nine elements (a through i).

- (a) Identify the corner by reference to the U.S. public land survey system.
 O = Corner monument restored.

Quarter corner between Sections 4 and 9,
 Township 36 North, Range 15 East,
 Forest County, Wisconsin



- (b) Describe any record evidence, monument evidence, occupational evidence, testimonial evidence or any other material evidence you considered, and whether the monument was found or placed.

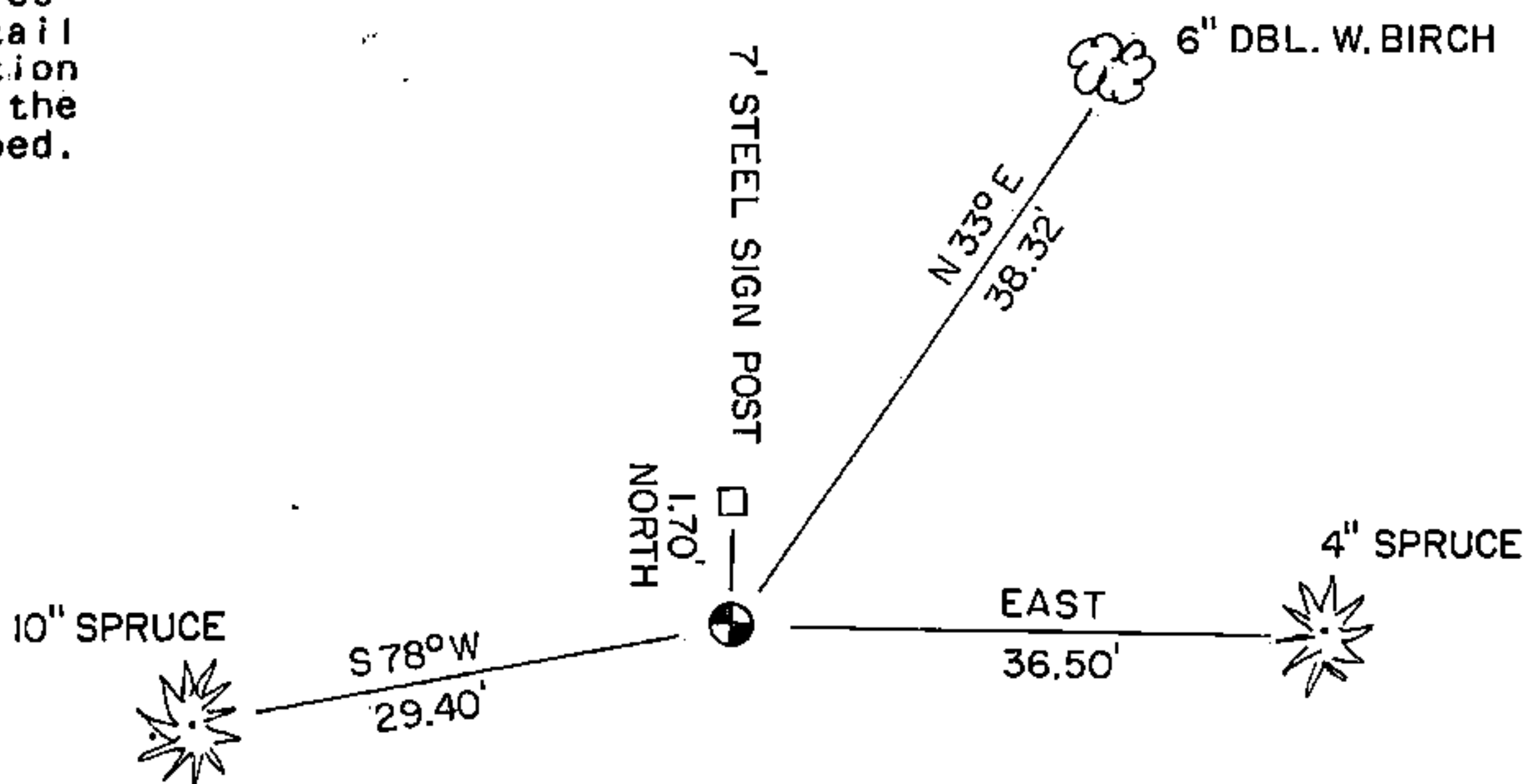
In 1859 James McBride set a wood post at 40.08 chains with stream call 6 links wide at 38.00 chains, with: Birch 14" South 43 links and a Hemlock 14" North 15 links.

In 1911, J Melendy the original Birch bearing tree still(green) and the Hemlock was down. He made new ties of: Pine stump 30" N38½E 53½ links and a Hemlock 18" S71W 27 5/8 links.

Found Melendy's Pine stump and at S38½W 53½ links located post points under swamp grass. Stream call east also fit well. Monumented the post points. Melendy's Hemlock stump, now rotted and at ground level was also located to prove the post points.

- (c) In the plan view drawing below, provide reference ties to at least 4 witness monuments, or, if the location is within a municipality, to at least 2 witness monuments. (Witness monuments shall be made of concrete, natural stone, iron or other equally durable material.) Describe witness monuments.

- (d) Show a plan view drawing depicting the relevant monuments and reference ties which is sufficient in detail to enable accurate relocation of the corner monument if the corner monument is disturbed. Indicate north.



Set a 2"x 36" Aluminum monument with cap stamped for corner and accessories set to USFS standard.

REGISTER'S OFFICE }
 Forest County, Wis.

Received for record this 7th day
 of August A.D., 1985 at
3:00 o'clock P.M. and recorded
 in Vol. CORNER RESTORATION
 page E-11

Paul Aschenbrenner
 Register of Deeds

INDEX NO. E-11

43615040620

- (e) Describe any material discrepancy between the location of the corner as restored or reestablished and the location of that corner as previously restored or reestablished by distance and direction. Show the discrepancy on the plan view drawing under (d), above. Show the distances between the corner as previously restored or reestablished and (1) the corner as restored or reestablished, and (2) to at least 2 of the witness monuments shown on the drawing in (d), above.

No discrepancy

- (f) Was the corner restored through acceptance of (1) an obliterated evidence location, or, (2) a found perpetuated location?

Found perpetuated evidence

- (g&h) Was the corner reestablished through lost corner proportionate methods? If so, show the method, including the directions and distances to other public land survey corners used as evidence or used for proportioning in determining the corner location?

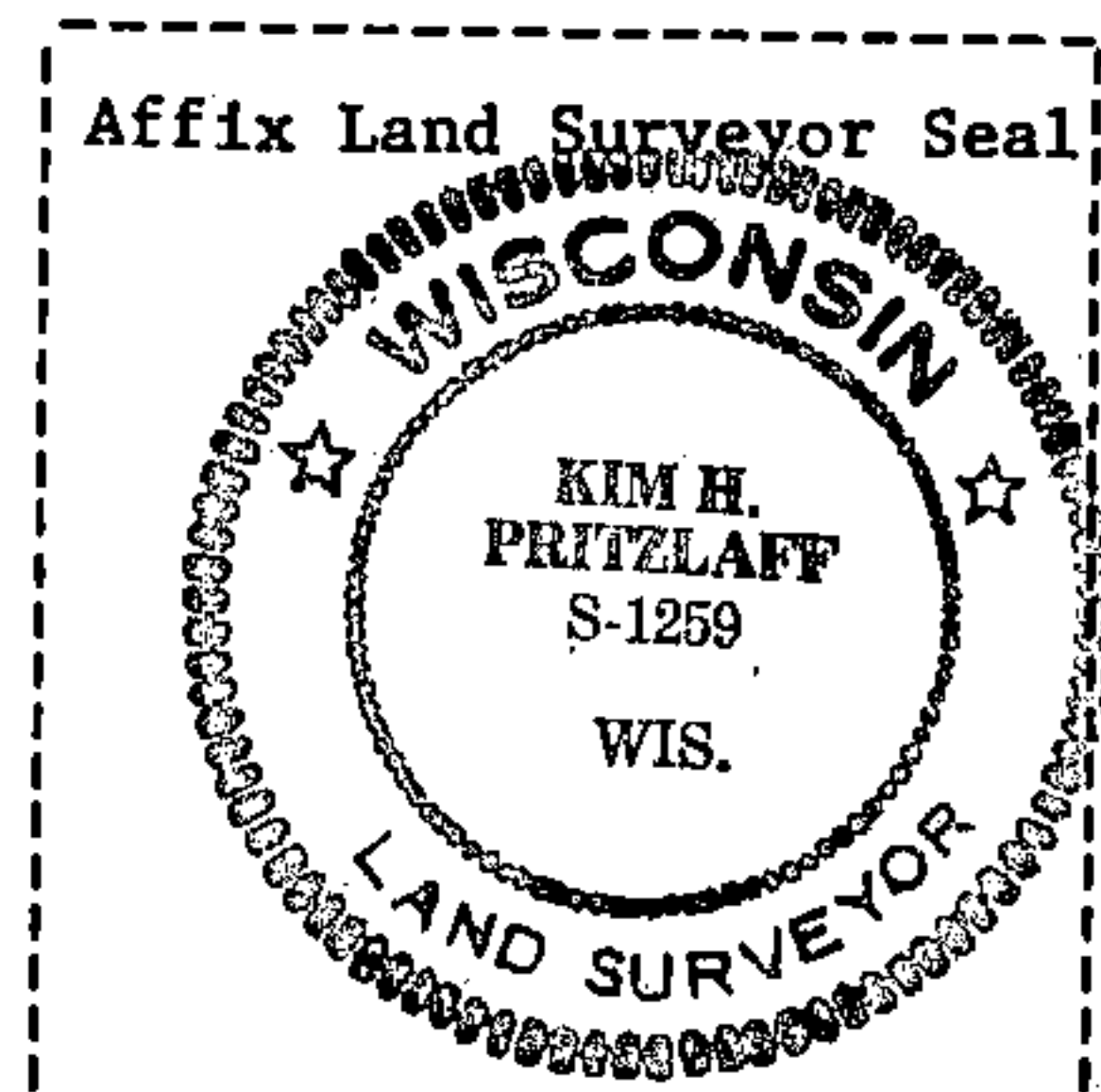
No.

Kim H Pritzlaff

- (i) I, Kim H Pritzlaff (type or print name) certify that the corner location shown on this record was determined by me or under my direction and control and that this U.S. Public Land Survey Monument Record is correct and complete to the best of my knowledge and belief.

Signature

Date



U. S. PUBLIC LAND SURVEY MONUMENT RECORD

INSTRUCTIONS:

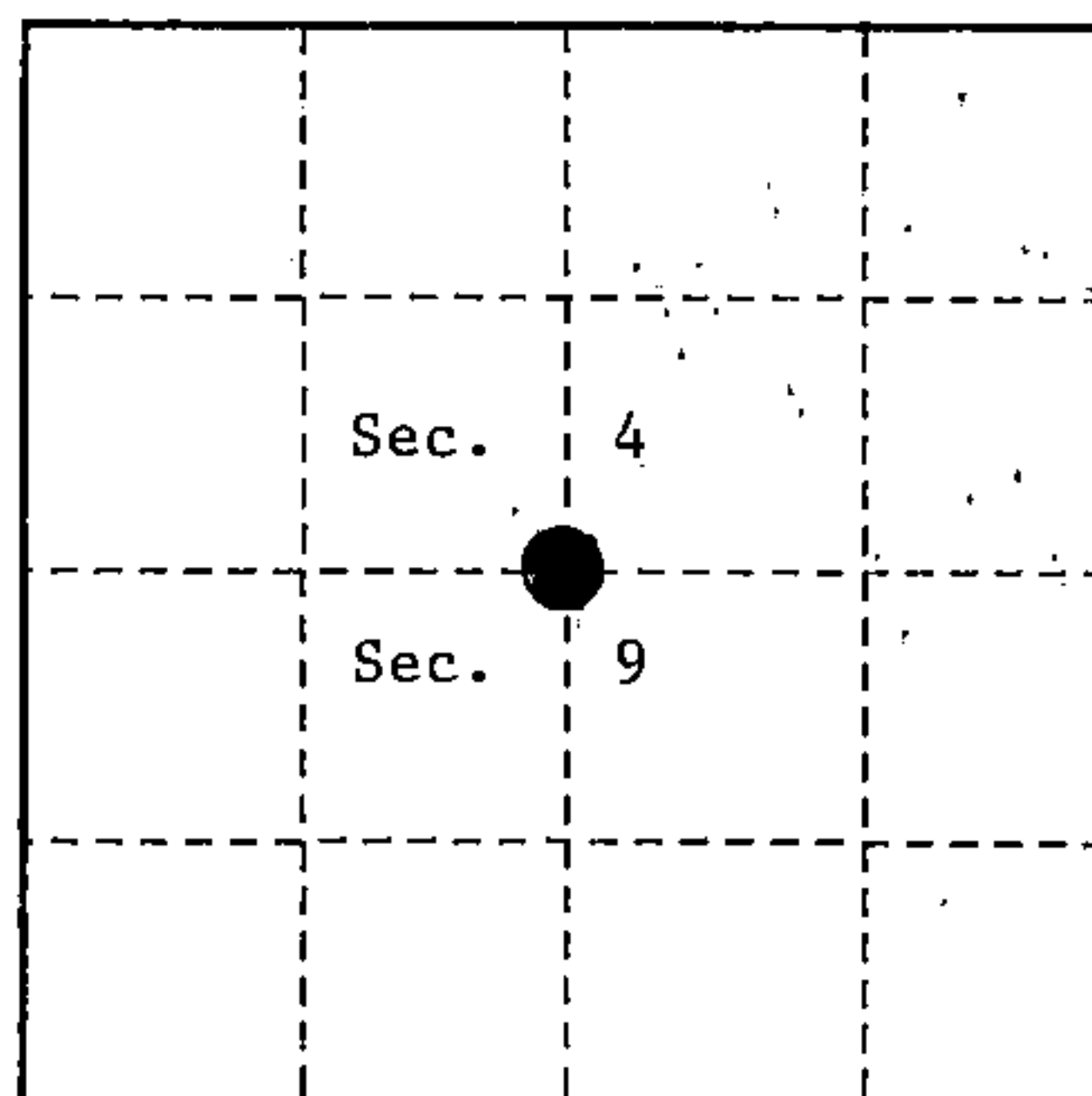
This record shall show the location of the corner and shall include all of the following nine elements (a through i).

- (a) Identify the corner by reference to the U.S. public land survey system.
 O = Corner monument restored.

Quarter Corner between Sections 4 and 9,
 T.36N., R.15E., Forest County, Wisconsin.

State Plane Coordinates
 Wisconsin North Zone
 N - 169060.71235
 E - 2320668.18767

Geographic Coordinates
 N - 45 - 37 - 18.94847
 W - 088 - 37 - 24.81416



- (b) Describe any record evidence, monument evidence, occupational evidence, testimonial evidence or any other material evidence you considered, and whether the monument was found or placed.

Original Survey in 1859 by James McBride. Set wood post and the following B.T.'s; Birch, 14", South 43 links, Hemlock, 14", North, 15 links, stream 6 links wide at 38.00 chains.

In 1911, J. Melendy found evidence of both original bearing trees. He made the following new ties; Pine stump, N.38½°E., 53½ links, Hemlock 18", S.71°W., 27 5/8 links.

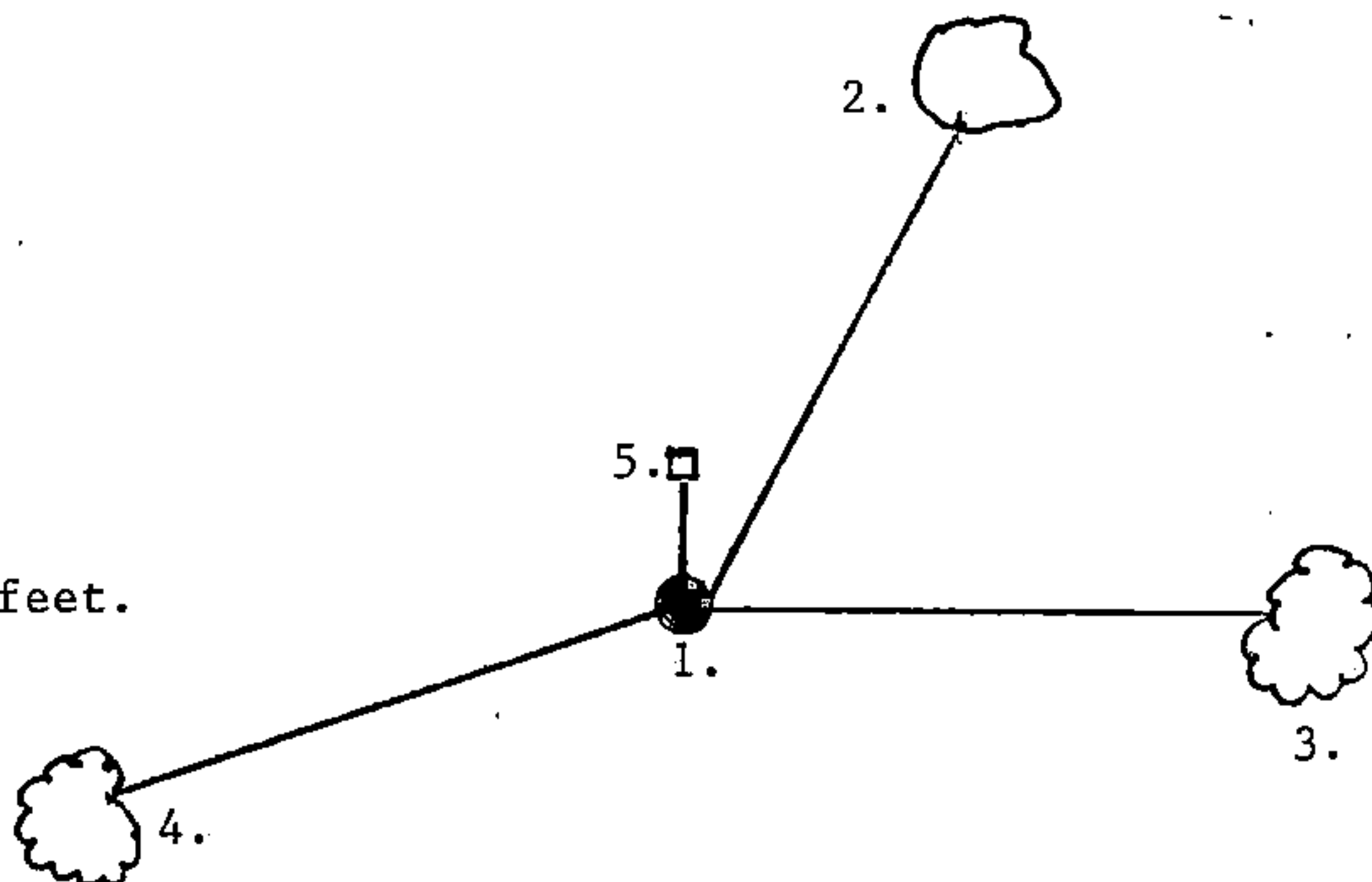
In 1985, Kim Pritzlaff, RLS, found Melendy's pine stump and also located a post point under swamp grass. Stream call East fit well. Also found Melendy's Hemlock stump rotted to ground level. In place of post point set a 2" X 36" aluminum monument with cap stamped to identify corner. Made the following new B.T.'s; Double White Birch 6", N.33°E., 38.32 feet, Spruce, 4", East, 36.50 feet, Spruce, 10", S.78°W., 29.40 feet, Steel Sign Post, North, 1.70 feet.

In 1994, Alan Harrison, RLS, found monument and B.T.'s as set by Pritzlaff in 1985. Cut down Northwest B.T. for G.P.S. observations. Blazed and scribed a new B.T.; White Spruce, 11", S.60°W., 56.89 feet.

- (c) In the plan view drawing below, provide reference ties to at least 4 witness monuments, or, if the location is within a municipality, to at least 2 witness monuments. (witness monuments shall be made of concrete, natural stone, iron or other equally durable material.)

- (d) Show a plan view drawing depicting the relevant monuments and reference ties which is sufficient in detail to enable accurate relocation of the corner monument if the corner monument is disturbed. Indicate north.

1. 2" X 36" Aluminum Monument with tablet stamped to identify corner.
2. Double White Birch, 11", N.33°E., 38.32 feet.
3. White Spruce, 5", East, 36.50 feet.
4. White Spruce, 11", S.60°W., 56.89 feet.
5. Steel Sign Post, North, 1.70 feet.



(e) Describe any material discrepancy between the location of the corner as restored or reestablished and the location of that corner as previously restored or reestablished by distance and direction. Show the discrepancy on the plan view drawing under (d), above. Show the distances between the corner as previously restored or reestablished and (1) the corner as restored or reestablished, and (2) to at least 2 of the witness monuments shown on the drawing in (d), above.

None

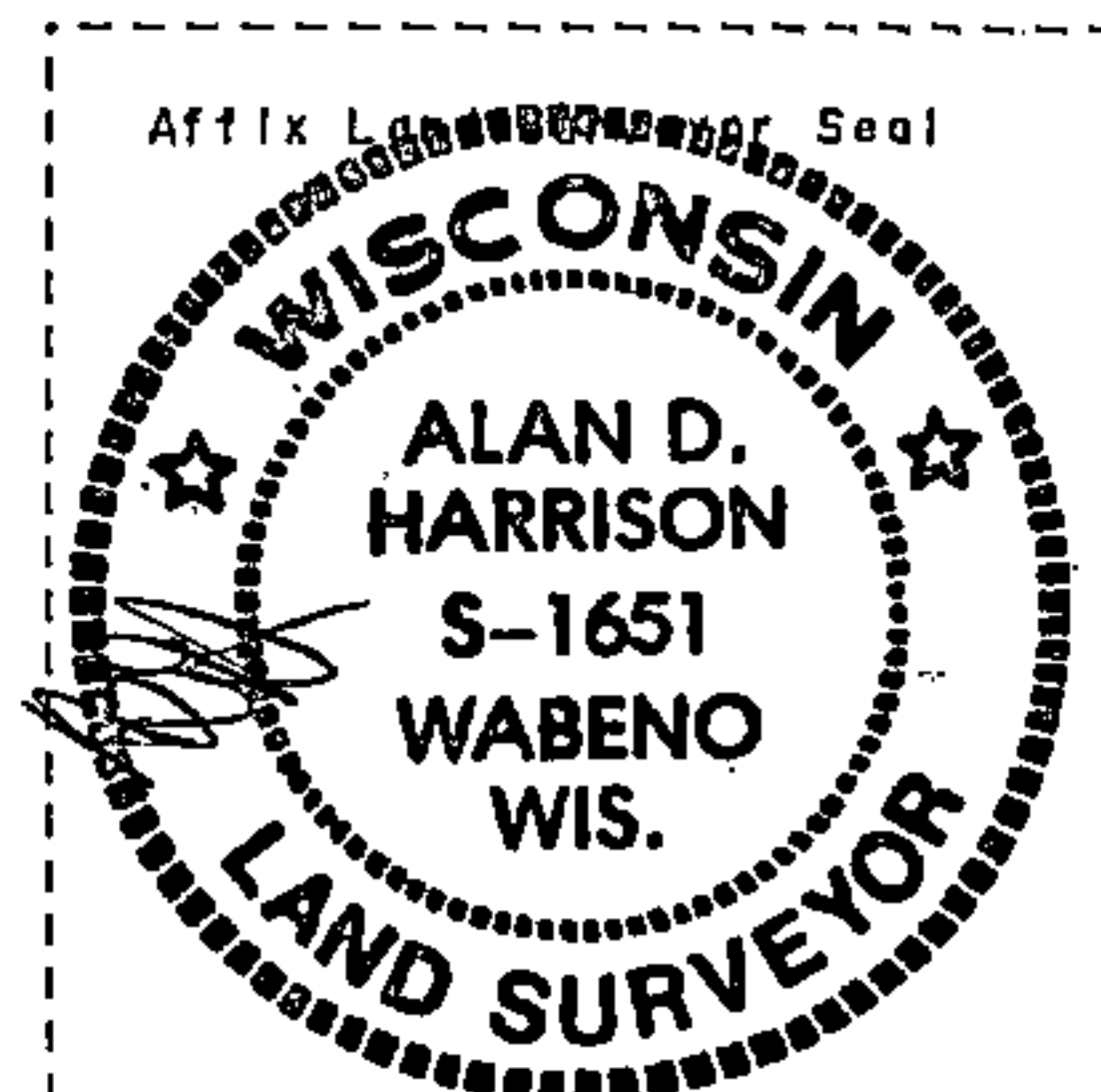
(f) Was the corner restored through acceptance of (1) an obliterated evidence location, or, (2) a found perpetuated location?

(1)

(g & h) Was the corner reestablished through lost corner proportionate methods? If so, show the method, including the directions and distances to other public land survey corners used as evidence or used for proportioning in determining the corner location?

No

REGISTER'S OFFICE
Forest County, Wis.
Received for record this 10th day
of May A.D., 19 95 at
8:30 o'clock A.M. and recorded
in Vol. Case Restorations
page 36-15: E-11
Jul. C. Deery
Register of Deeds



(1) I, Alan D. Harrison

(type or print name) certify that the corner location shown on this record was determined by me or under my direction and control and that this U.S. Public Land Survey Monument Record is correct and complete to the best of my knowledge and belief.

Alan D. Harrison
Signature

4/25/95
Date

CERTIFICATE READY FOR FILING:

Perry Shuecker
District Ranger