

## U.S. PUBLIC LAND SURVEY MONUMENT RECORD

Index No. **H-13**

State of Wisconsin }  
 County of Forest } ss.

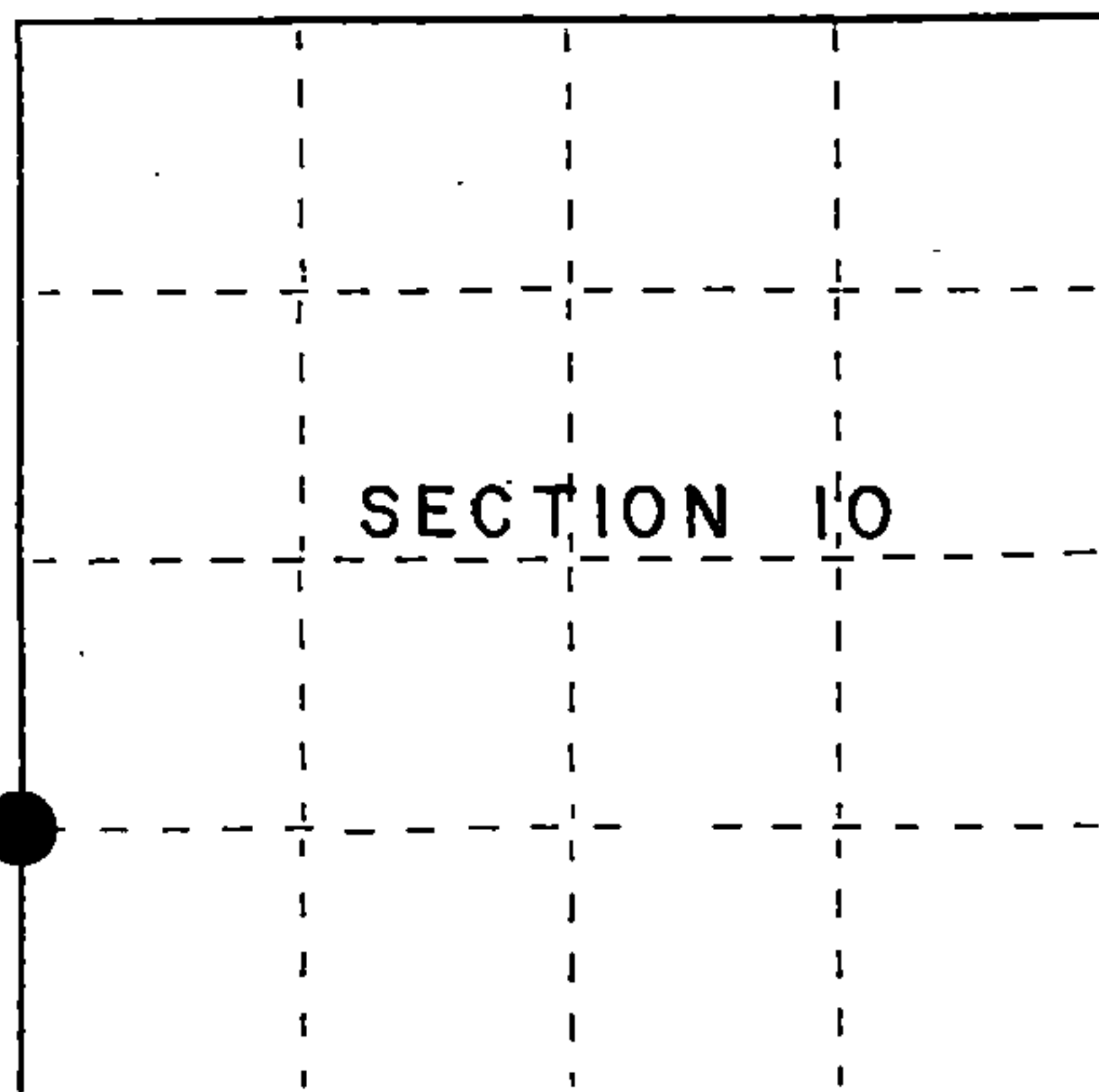
I Gary L. Pisoni, do hereby  
 certify that on the 19th day  
 of October, 1994, I found  
 evidence of the South One-Sixteenth  
 corner of Sections 9 and 10  
Township 36, North, Range  
15 East, Fourth Principal Meridian,  
 as described hereon; and that from this evidence  
 I established a new monument and accessories  
 as described hereon to perpetuate the original  
 location of this corner.

Resident witnesses:

.....

.....

.....



● = Corner monument restored.

## History of original corner establishment:

Corner was originally established by J. Melendy in 1911. He set a wood post marking the S 1/16 corner position. In 1985, Kim H. Pritzlaff found and 1 1/4" dia. iron pipe located in a rock cairn, said pipe was driven in an old post point. Kim Pritzlaff RLS accepted the iron pipe as the 1/16th corner and replaced it with a 2" dia. aluminum pipe monument.

## Description of corner evidence found:

Found a 2" dia. aluminum pipe monument set by Kim H. Pritzlaff RLS and found monument to be 4' out of position.

I re-established the S 1/16 corner position on line and at midpoint between the Southwest Section corner of Section 10 and the West Quarter corner of Section 10.

## Description of monument and accessories I established to perpetuate the original location of this corner.

At the corner position, set a 1" dia. aluminum pipe monument, 3 feet long, 3 inches above the ground surface, with a 2" aluminum capped stamped: T36N, R15E, S 1/16, S-9, S-10, 1994, S-1634; from which the following new blazed and scribed bearing trees bear: (all measurements taken to a nail in side of tree)

Sugar Maple	5"	N 27° W	15.35 feet
Red Maple	6"	N 83° E	43.64 feet
Sugar Maple	6"	S 52° E	23.60 feet
Steel sign post		N 61° E	2.40 feet
Erroneous alum mon.		N 76° 55' 35" E	4.07 feet
Steel sign post		S 45° W	0.88 feet

Dated at Iron River, MI, ~~xxx~~, this 16th day of December, 1996

Signature Gary L. Pisoni Title Land Surveyor Registration No. S-1634  
 (County Surveyor, Registered Land Surveyor, or other duly authorized official)

Office of Register of Deeds, County of Forest, I hereby certify that the within  
 instrument was filed in this office for record on the 20th day of March, 1997  
 at 1:30 o'clock P M.

(Register of Deeds)

By John J. Tinkler Deputy

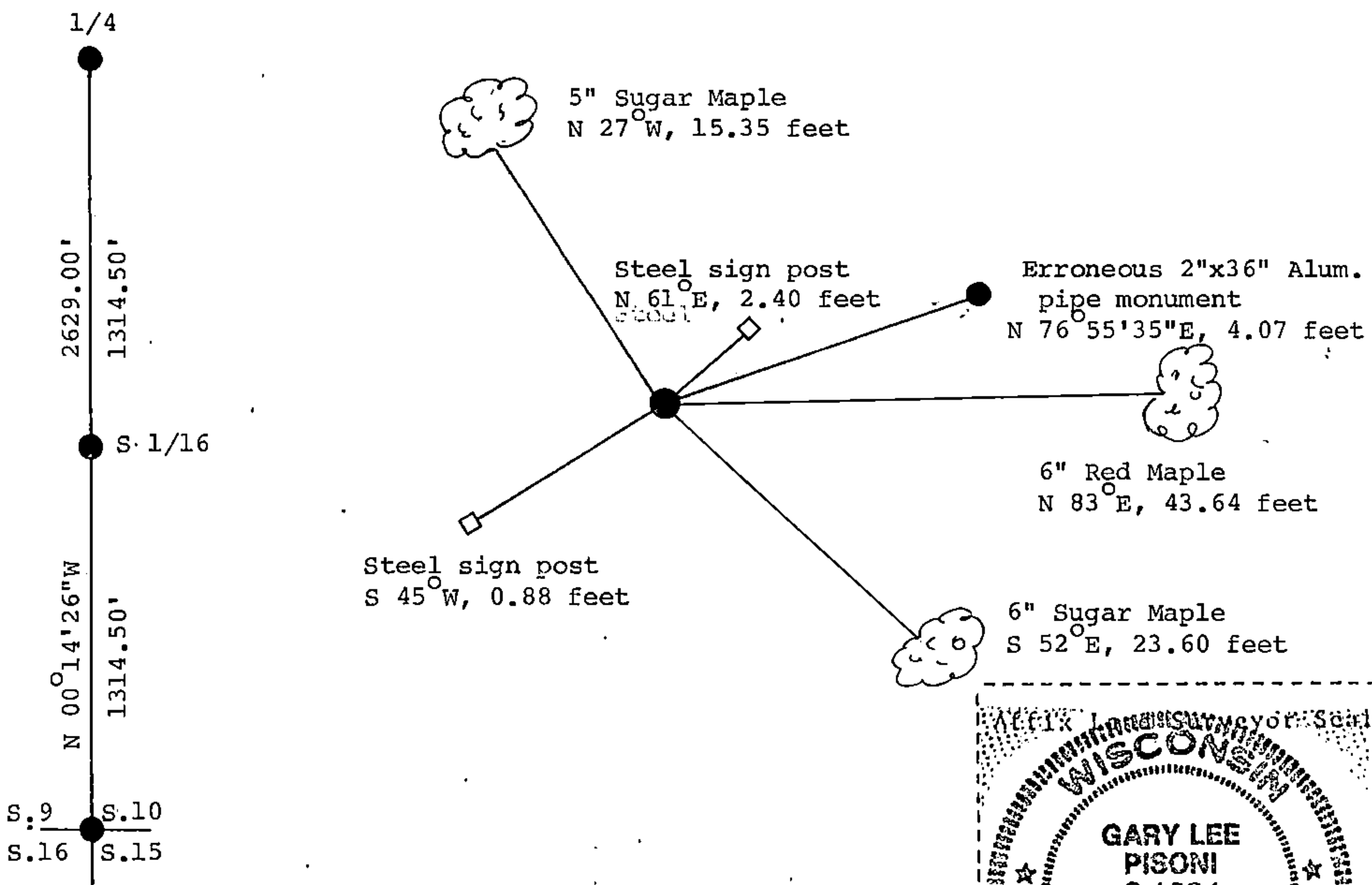
- e) Describe any material discrepancy between the location of the corner as restored or reestablished and the location of that corner as previously restored or reestablished by distance and direction. Show the discrepancy on the plan view drawing under (d), above. Show the distances between the corner as previously restored or reestablished and (1) the corner as restored or reestablished, and (2) to at least 2 of the witness monuments shown on the drawing in (d), above.

Found corner to be in error as described on front page.

- (f) Was the corner restored through acceptance of (1) an obliterated evidence location, or, (2) a found perpetuated location?

Re-established on line and at midpoint between Section corner and Quarter corner.

- (g&h) Was the corner reestablished through lost corner proportionate methods? If so, show the method, including the directions and distances to other public land survey corners used as evidence or used for proportioning in determining the corner location?



- (i) 1. Gary L. Pisoni  
(Type or print name) certify that the corner location shown on this record was determined by me or under my direction and control and that this U.S. Public Land Survey Monument Record is correct and complete to the best of my knowledge and belief.

Signature

Date

12-16-96

