

Document Number
177324

REGISTER'S OFFICE }
Forest County, Wis. }
Received for record this 5th day
of November A.D., 2002 at
1:35 o'clock A M. and recorded
in Vol. Corner Restoration
page B-24
Kay Swanson, Deputy
Register of Deeds

U.S. PUBLIC LAND SURVEY MONUMENT RECORD

(As Required by WI Adm. Code)

History of original corner establishment and subsequent restorations and descriptions of any record, monument, occupational, testimonial or other evidence considered:

Corner not set in original Government Survey.

2002 - Established the E. 1/16 corner midpoint and on line between the Northeast corner of Section 25 and the North Quarter corner of Section 25.
Set a 1" x 36" Forest County Aluminum Monument stamped for the 1/16th corner.

Corner was: (Check All That Apply)

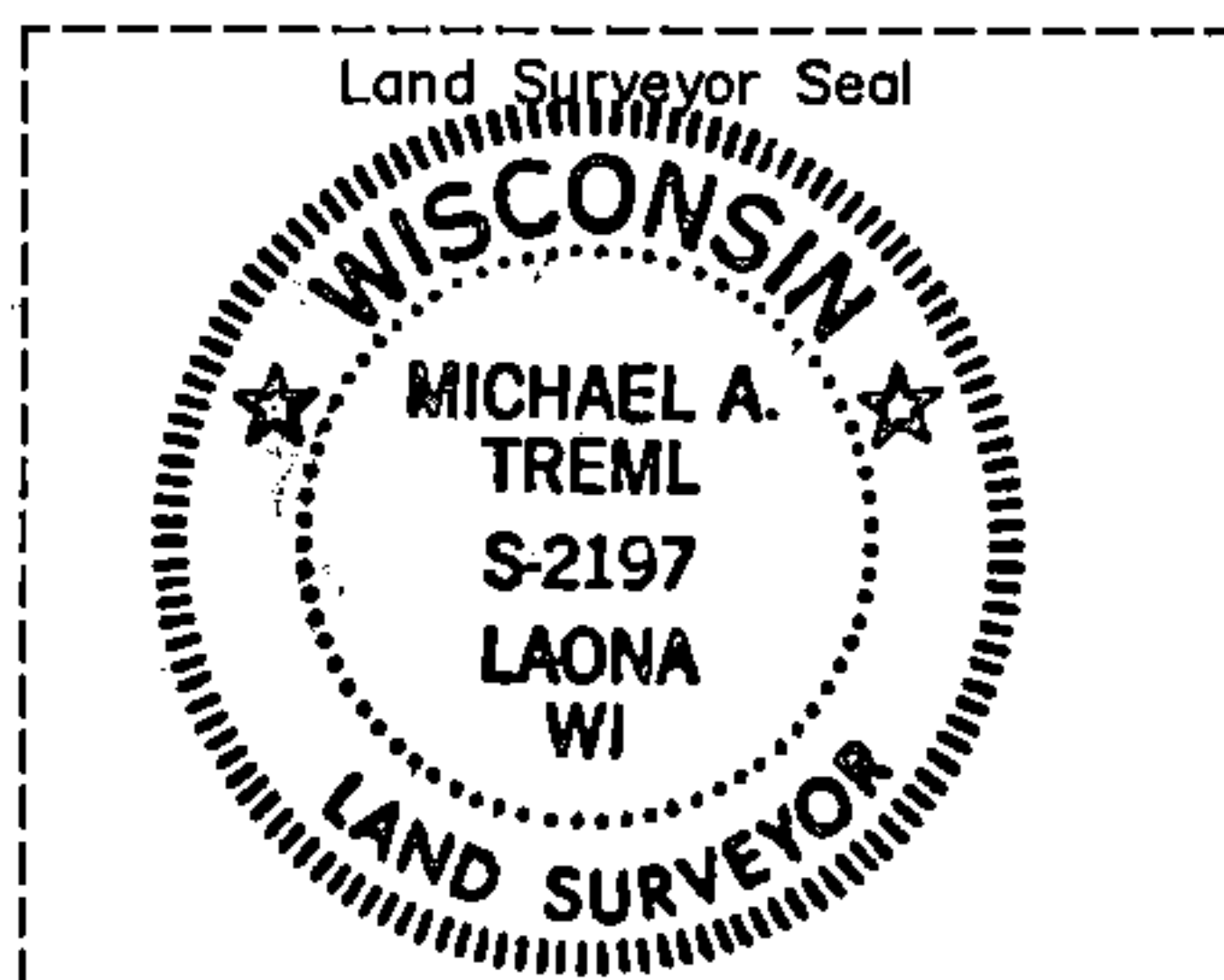
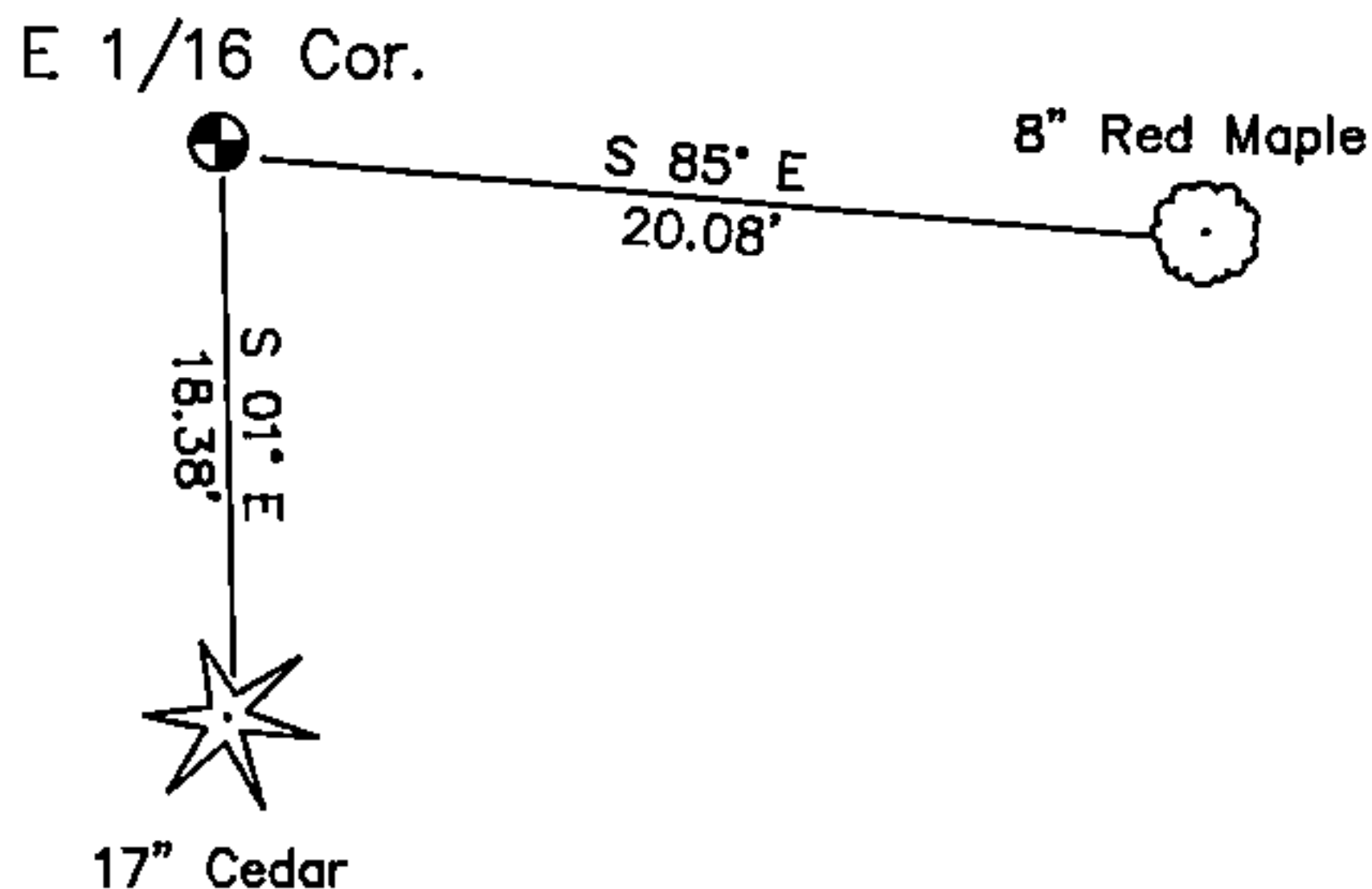
- ☐ Restored through acceptance of an obliterated evidence location.
- ☐ Restored through acceptance of a found perpetuated location.
- ☐ Considered a lost corner and reestablished through lost corner proportionate methods (include a plan view drawing showing distances and directions to other Public Land Survey Corners used for proportioning and determining the corner location).
- ☐ Restored or reestablished in a location that differs from a previous restoration or reestablishment (include a plan view drawing and indicate what was set and/or found).

Describe the monument and accessories used to perpetuate the location of this corner (include a plan view drawing and indicate what was set and/or found).

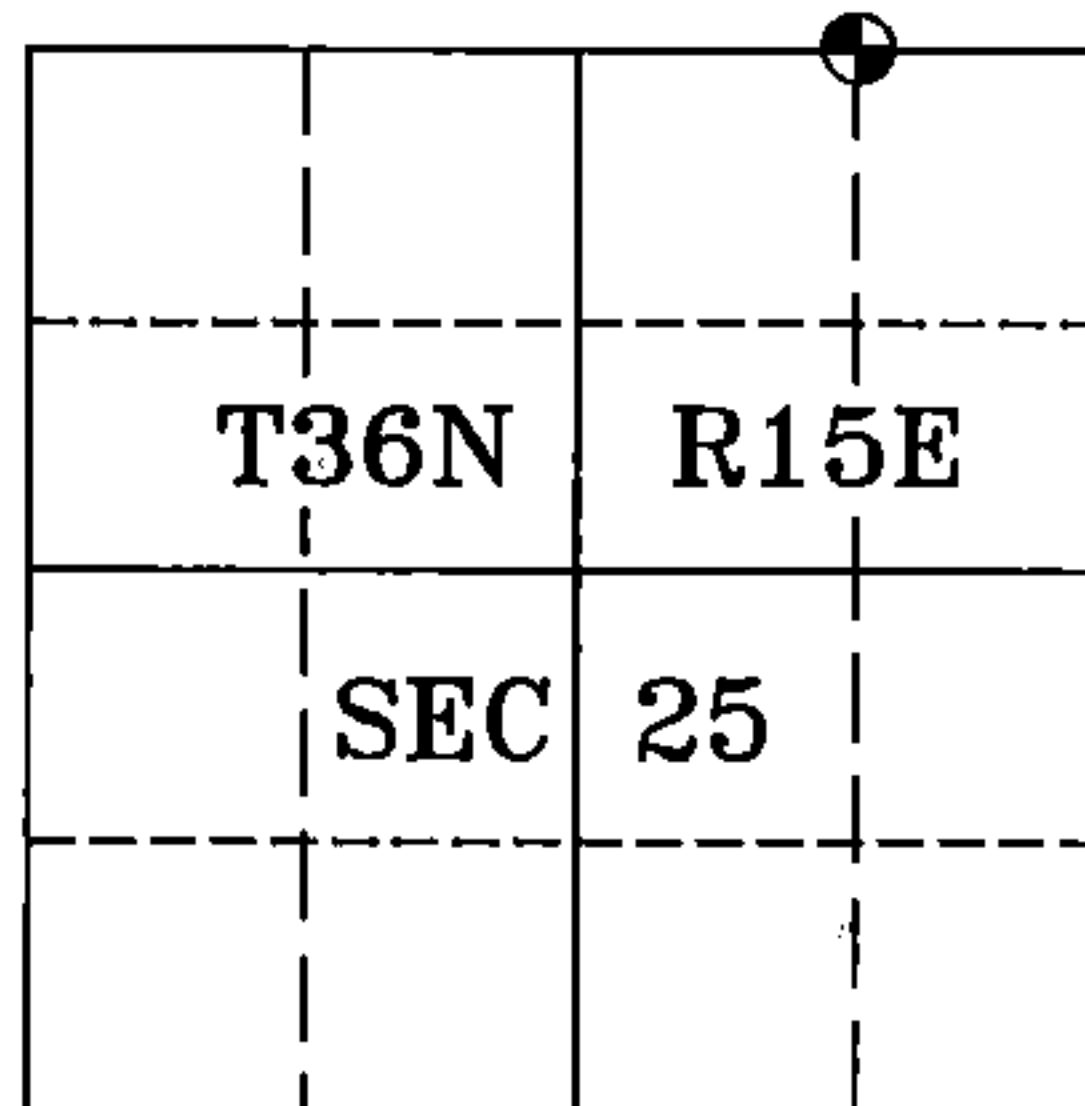
LEGEND:

- Forest County
Aluminum Monument

Note: All distances are
taken to nail in
side of tree.



ASSUMED



I, Michael A. Trembl, RLS
(type or print name) certify that the corner location shown on
this record was determined by me or under my direction and
control and that this U.S. Public Land Survey Monument Record
is correct and complete to the best of my knowledge and belief.

Michael A. Trembl 10/10/02
Signature Date

The East Sixteenth corner of
Section 25 T. 36 N., R. 15 E.
Forest County, WI

Index No. R-24

43615240010