

127715

U. S. PUBLIC LAND SURVEY MONUMENT RECORD

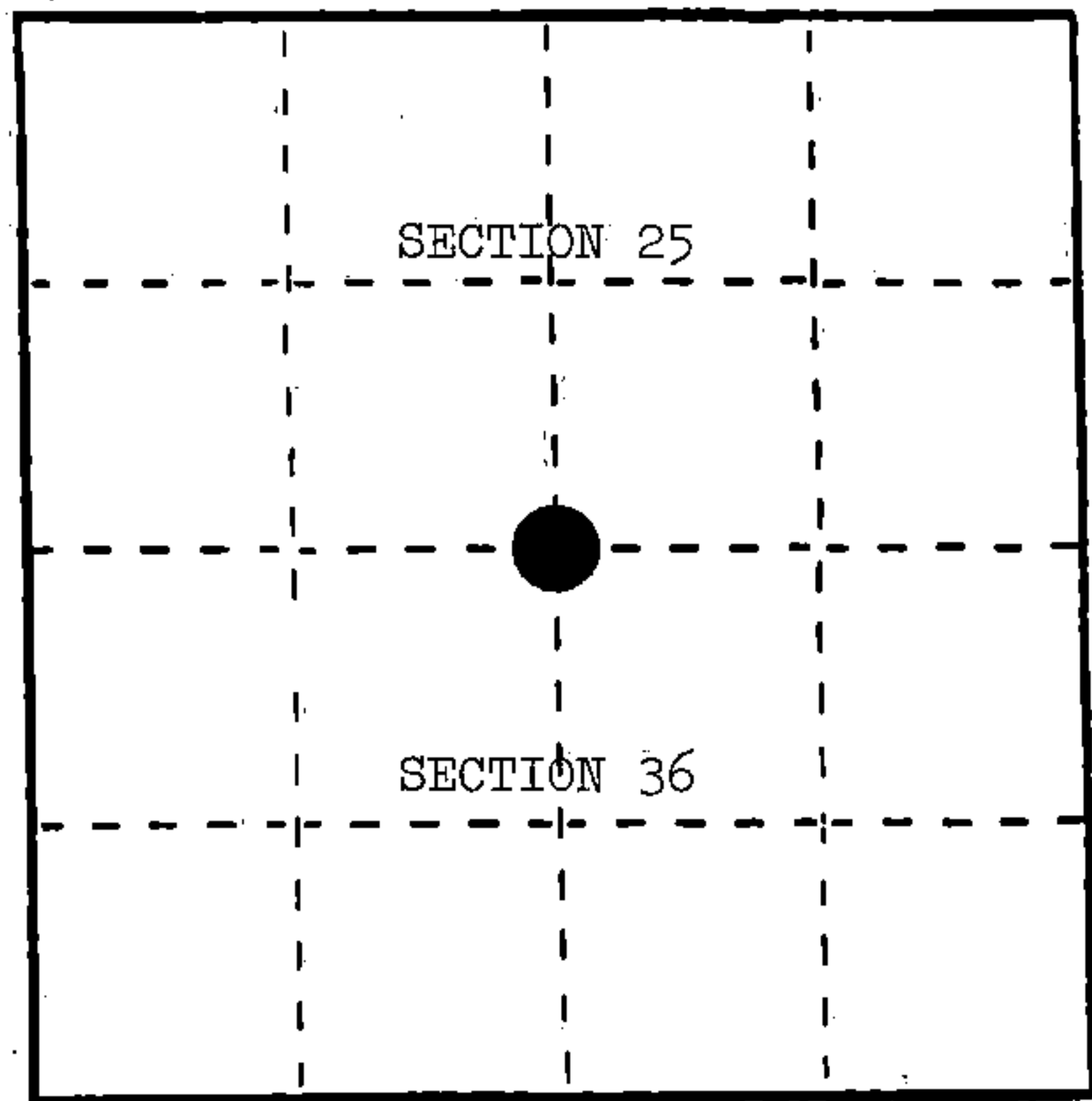
INSTRUCTIONS:

This record shall show the location of the corner and shall include all of the following nine elements (a through i).

- (a) Identify the corner by reference to the U.S. public land survey system.

○ = Corner monument restored.

Quarter corner to Sections 25 and 36, T.36N., R.15E., Forest County, Wisconsin.



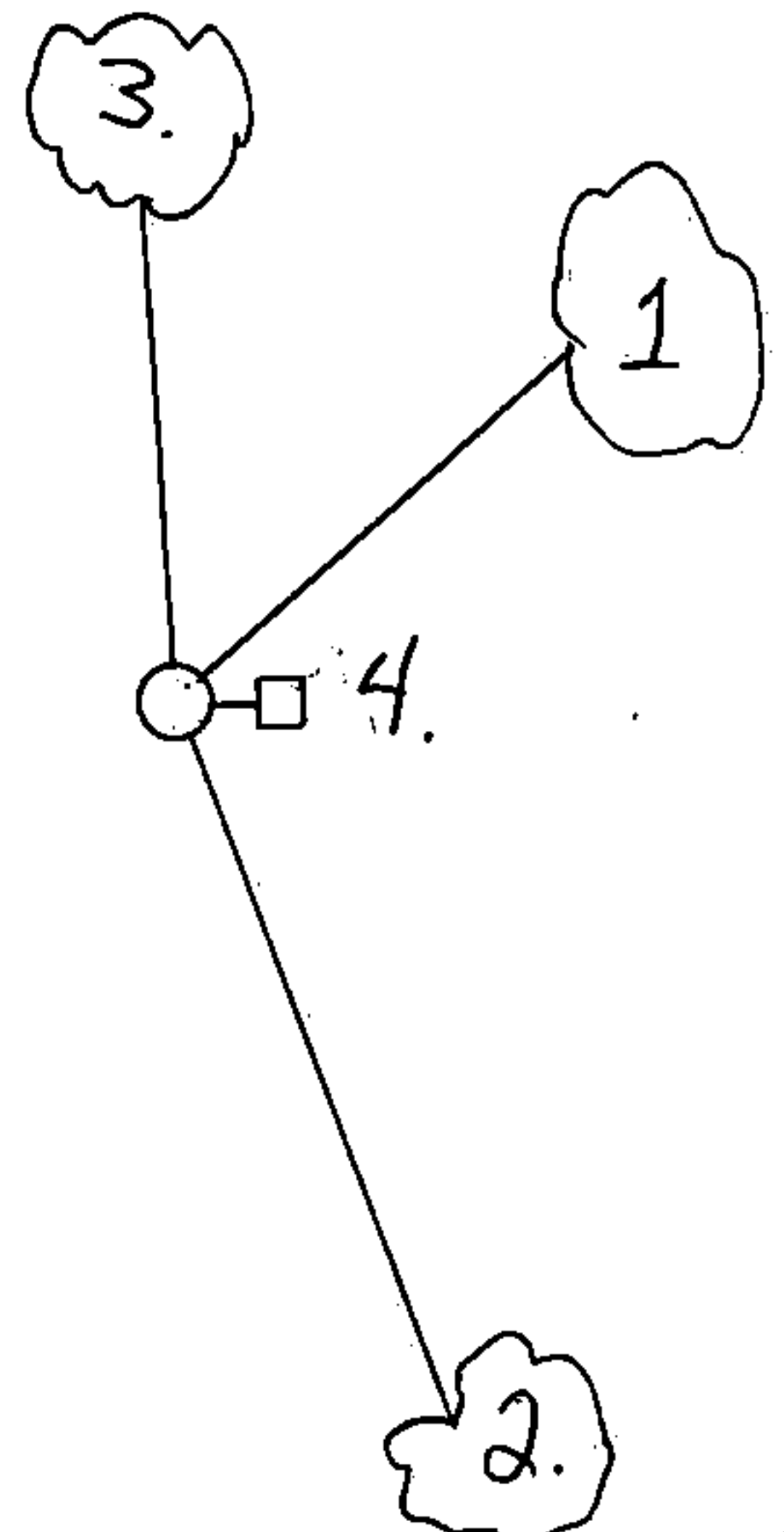
- (b) Describe any record evidence, monument evidence, occupational evidence, testimonial evidence or any other material evidence you considered, and whether the monument was found or placed.

No original evidence found, corner restored by single proportionate measure.

- (c) In the plan view drawing below, provide reference ties to at least 4 witness monuments, or, if the location is within a municipality, to at least 2 witness monuments. (Witness monuments shall be made of concrete, natural stone, iron or other equally durable material.) Describe witness monuments.

- (d) Show a plan view drawing depicting the relevant monuments and reference ties which is sufficient in detail to enable accurate relocation of the corner monument if the corner monument is disturbed. Indicate north.

1. Sugar Maple, 6", N.48°E., 32.21 feet
2. Hemlock, 12", S.23°E., 62.11 feet
3. Hemlock, 18", N.2°W., 35.55 feet
4. Steel Sign Post, East, 2.0 feet



REGISTER'S OFFICE
Forest County, Wis.

Received for record this... 1st day
of April... A.D., 1985 at

... 2:05 o'clock... P.M. and

recorded in Vol. CORNER RESTORATIONS

on page 23
Paul Aschenbrenner
REGISTER

(e) Describe any material discrepancy between the location of the corner as restored or reestablished and the location of that corner as previously restored or reestablished by distance and direction. Show the discrepancy on the plan view drawing under (d), above. Show the distances between the corner as previously restored or reestablished and (1) the corner as restored or reestablished, and (2) to at least 2 of the witness monuments shown on the drawing in (d), above.

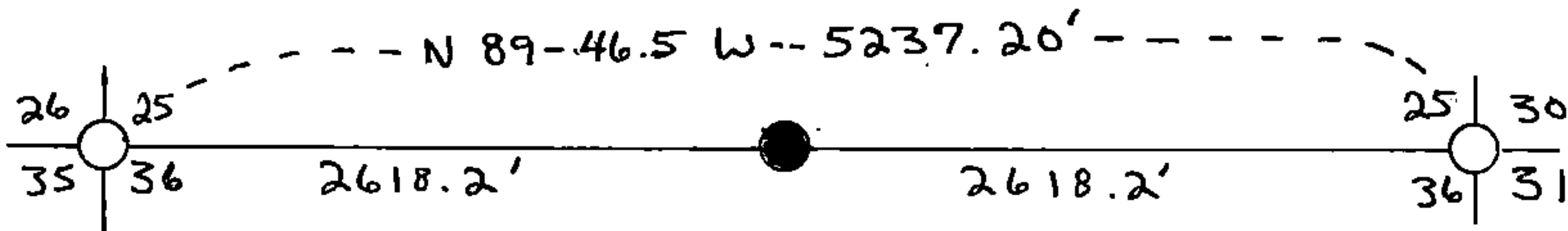
None.

(f) Was the corner restored through acceptance of (1) an obliterated evidence location, or, (2) a found perpetuated location?

No.

(g&h) Was the corner reestablished through lost corner proportionate methods? If so, show the method, including the directions and distances to other public land survey corners used as evidence or used for proportioning in determining the corner location?

Yes. Single proportionate measure.



Affix Land Surveyor Seal



(i) I, Milo E. Stefan
(type or print name) certify that the corner location shown on this record was determined by me or under my direction and control and that this U.S. Public Land Survey Monument Record is correct and complete to the best of my knowledge and belief.

Milo E. Stefan
Signature

3/31/85
Date

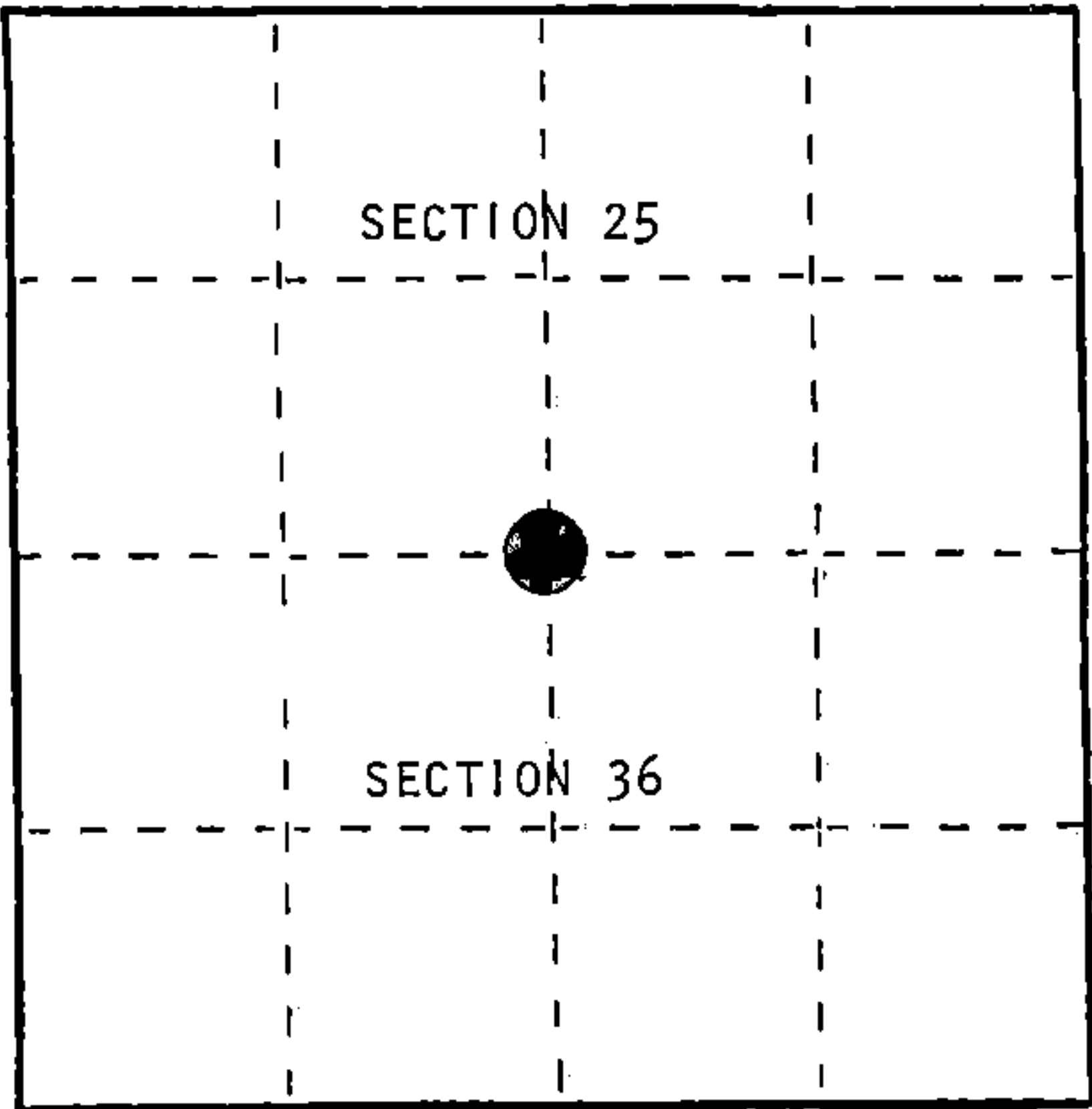
U. S. PUBLIC LAND SURVEY MONUMENT RECORD

INSTRUCTIONS: This record shall show the location of the corner and shall include all of the following nine elements (a through i).

- (a) Identify the corner by reference to the U.S. public land survey system.
- = Corner monument restored.

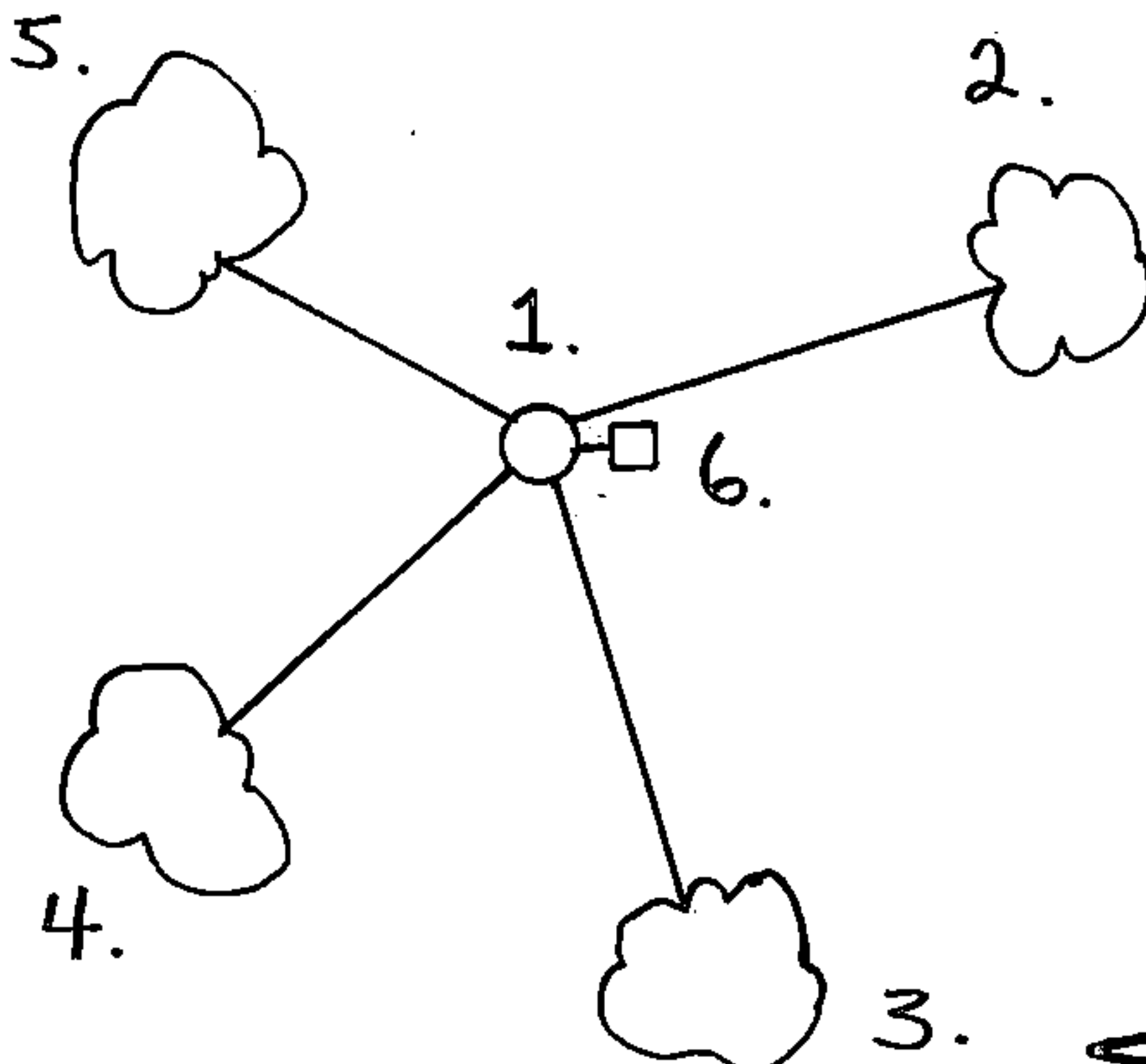
Quarter corner to Sections 25 and 36, T.36N., R.15E.

REGISTER'S OFFICE }
Forest County, Wis.
Received for record this 14th day
of March A.D. 1986 at
10:25 o'clock A.M. and recorded
in Vol. CORNER RESTORATIONS
page V-23
Paul Aschenbrenner
Register of Deeds



- (b) Describe any record evidence, monument evidence, occupational evidence, testimonial evidence or any other material evidence you considered, and whether the monument was found or placed.
- In 1859, James McBride set quarter section post and made the following BTs: Basswood, 8", S.25°E., 45 links; Sugar, 16", N.4°W., 17 links.
- In 1917, J. J. Melindy found original Maple stump and original Basswood--green. Set post and made the following BTs: Birch, 14", N.73 3/4°E., 27 3/4 links; Maple, 24", S.51 3/4°E., 52 1/4 links; Maple, 12", S.42°W., 40 3/4 links.
- In 1985, Milo Stefan found post hole and the following BT remains: Birch stump, N.73°E., 18.31 feet; Maple stump, S.52°E., 34.48 feet; Maple stump, S.42°W., 26.89 feet; Basswood clump, S.25°E., 29.7 feet; stump hole, N.4°W., 11.22 feet.
- (c) In the plan view drawing below, provide reference ties to at least 4 witness monuments, or, if the location is within a municipality, to at least 2 witness monuments. (Witness monuments shall be made of concrete, natural stone, iron or other equally durable material.) Describe witness monuments.

- (d) Show a plan view drawing depicting the relevant monuments and reference ties which is sufficient in detail to enable accurate relocation of the corner monument if the corner monument is disturbed. Indicate north.
- 1. 2" x 36" aluminum monument stamped to identify the corner location.
- 2. Basswood, 9", N.70°E., 11.47 feet
- 3. Sugar, 6", S.15°E., 20.04 feet
- 4. Hemlock, 16", S.32°W., 15.10 feet
- 5. Hemlock, 22", N.65°W., 9.76 feet
- 6. Steel Sign Post, East, 2.40 feet



- (e) Describe any material discrepancy between the location of the corner as restored or reestablished and the location of that corner as previously restored or reestablished by distance and direction. Show the discrepancy on the plan view drawing under (d), above. Show the distances between the corner as previously restored or reestablished and (1) the corner as restored or reestablished, and (2) to at least 2 of the witness monuments shown on the drawing in (d), above.

In 1982, Milo Stefan set corner by lost methods. In 1984, Stefan found Melindy's notes in a surveyor's office and in 1985 searched and found the perpetuated corner 89 feet north of his proportioned corner location.

- (f) Was the corner restored through acceptance of (1) an obliterated evidence location, or, (2) a found perpetuated location?

(1) an obliterated evidence location.

- (g&h) Was the corner reestablished through lost corner proportionate methods? If so, show the method, including the directions and distances to other public land survey corners used as evidence or used for proportioning in determining the corner location?

No.

Affix Land Surveyor Seal



- (1) I, Milo E. Stefan
(type or print name) certify that the corner location shown on this record was determined by me or under my direction and control and that this U.S. Public Land Survey Monument Record is correct and complete to the best of my knowledge and belief.

Milo E. Stefan
Signature

2/19/86
Date