

## U. S. PUBLIC LAND SURVEY MONUMENT RECORD

## INSTRUCTIONS:

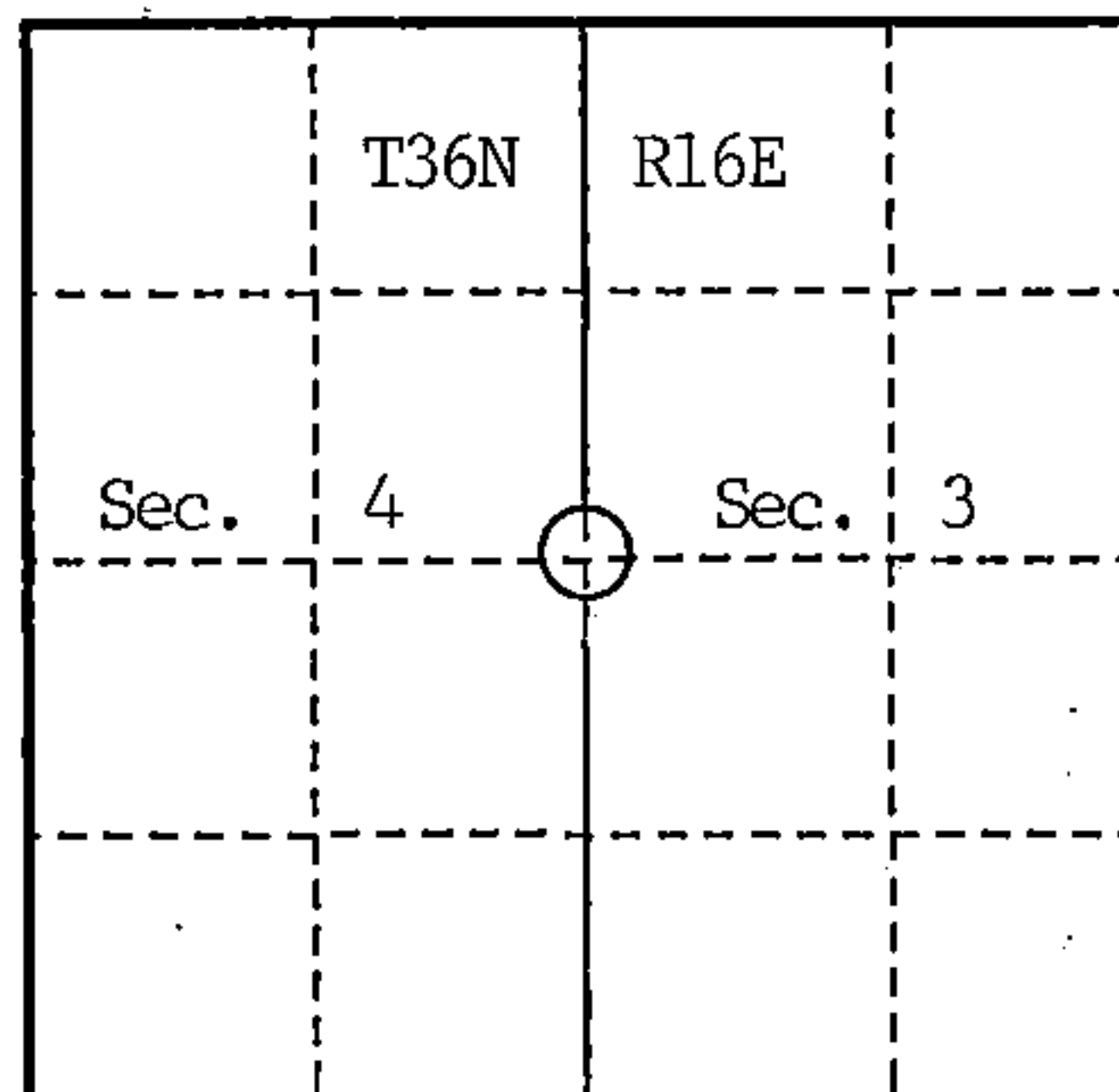
This record shall show the location of the corner and shall include all of the following nine elements (a through i).

- (a) Identify the corner by reference to the U.S. public land survey system.  
 O = Corner monument restored.

Quarter Corner common to Sections 3 and 4,  
 T36N-R16E

Index Number C-13

Forest County, Wisconsin



- (b) Describe any record evidence, monument evidence, occupational evidence, testimonial evidence or any other material evidence you considered, and whether the monument was found or placed.

1858 - Original post set by James McBride, witnessed by Sugar 14 N40E 23 lks.; Sugar 14 N80W 04 lks. Corner was established on corrected closing section line 40.00 chains North of corner to 3, 4, 9 and 10, and 39.40 chains south of standard corner on town line. Original notes for this line include no information as to feature calls or line trees.

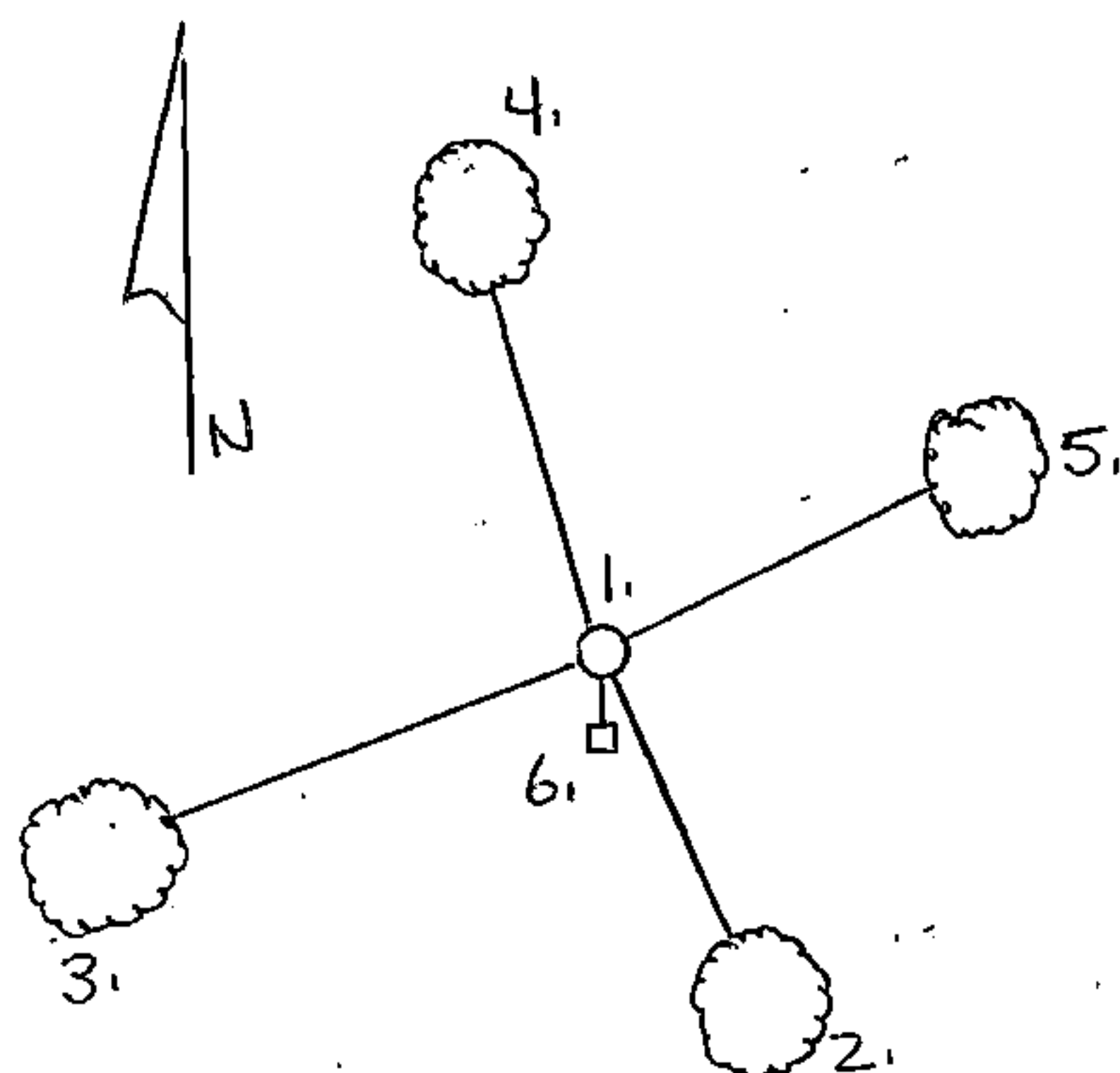
Found no record of subsequent recovery or remonumentation.

1991 - Subsequent to a survey traverse between the NW and SW corners of Section 3, June the general corner search area was located. A thorough search yielded no identifiable remains of the original evidence of subsequent occupations. Corner was assumed to be lost and was restored by single proportion between the controlling section corners North and South. A north-south logging paint line was observed approximately 13 feet West of the corner as monumented.

- (c) In the plan view drawing below, provide reference ties to at least 4 witness monuments, or, if the location is within a municipality, to at least 2 witness monuments. (witness monuments shall be made of concrete, natural stone, iron or other equally durable material.)

- (d) Show a plan view drawing depicting the relevant monuments and reference ties which is sufficient in detail to enable accurate relocation of the corner monument if the corner monument is disturbed. Indicate north.

1. 2½" x 36" Aluminum monument with location stamped on cap.
2. Basswood 17" S26°E 14.43 feet.
3. Sugar 17" S68°W 22.56 feet.
4. Sugar 8" N17°W 46.38 feet.
5. Sugar 4" N62°E 19.17 feet.
6. Steel sign post South 1.16 feet.



REGISTER'S OFFICE  
 Forest County, Wis.

Received for record this 8th day  
 of October, A.D., 1991 at  
2:00 o'clock P.M. and recorded  
 in Vol. Corner Restoration  
 page C-13

Paul Aschenbrenner  
 Register of Deeds

43616042000

- (a) Describe any material discrepancy between the location of the corner as restored or reestablished and the location of that corner as previously restored or reestablished by distance and direction. Show the discrepancy on the plan view drawing under (d), above. Show the distances between the corner as previously restored or reestablished and (1) the corner as restored or reestablished, and (2) to at least 2 of the witness monuments shown on the drawing in (d), above.

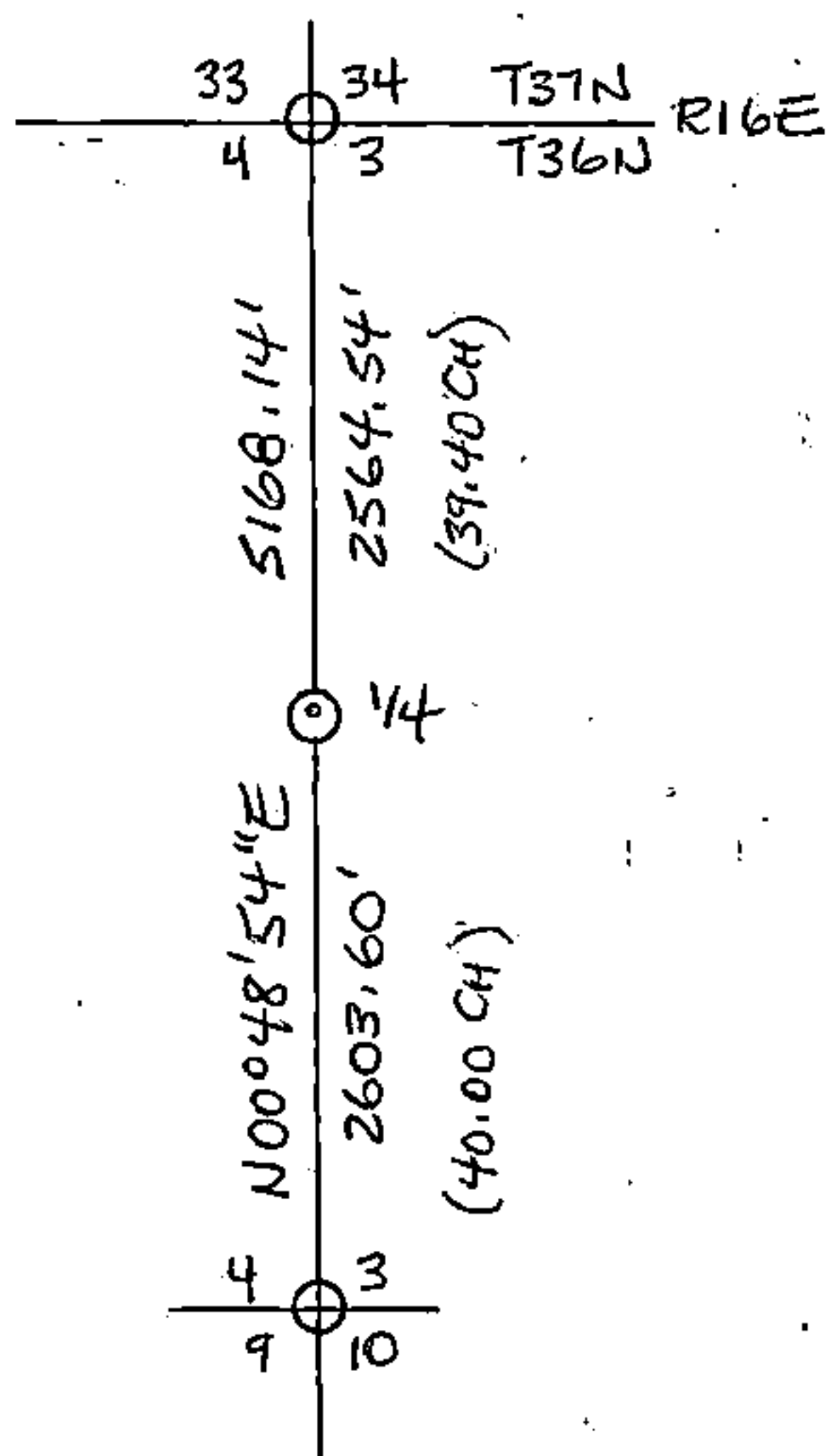
Found no evidence of prior corner recovery or remonumentation.

- (f) Was the corner restored through acceptance of (1) an obliterated evidence location, or, (2) a found perpetuated location?

Neither.

- (g & h) Was the corner reestablished through lost corner proportionate methods? If so, show the method, including the directions and distances to other public land survey corners used as evidence or used for proportioning in determining the corner location?

Corner was restored at proportionate distances from, and on a straight line between, the Northwest and Southwest corners of Section 3, T36N-R16E.



Charles F. Clark, RLS 1767  
COLEMAN ENGINEERING COMPANY

- (1) I, Charles F. Clark, (type or print name) certify that the corner location shown on this record was determined by me or under my direction and control and that this U.S. Public Land Survey Monument Record is correct and complete to the best of my knowledge and belief.

Charles F. Clark

August 23, 1991

Signature

Date

CERTIFICATE READY FOR FILING:

Darrell E. Richards  
Acting District Ranger

