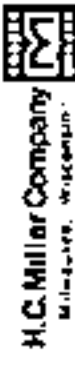


# U.S. PUBLIC LAND SURVEY MONUMENT RECORD

Index No. L-5

REGISTER'S OFFICE  
Forest County, Wis.  
Received for record this 24th day  
of February, A.D., 1987 at  
2:00 o'clock P. M. and recorded  
in Vol. 100 CORNER RESTORATIONS  
page 15  
Paul Achenbrenner  
Register of Deeds

FORM NO. 985-A



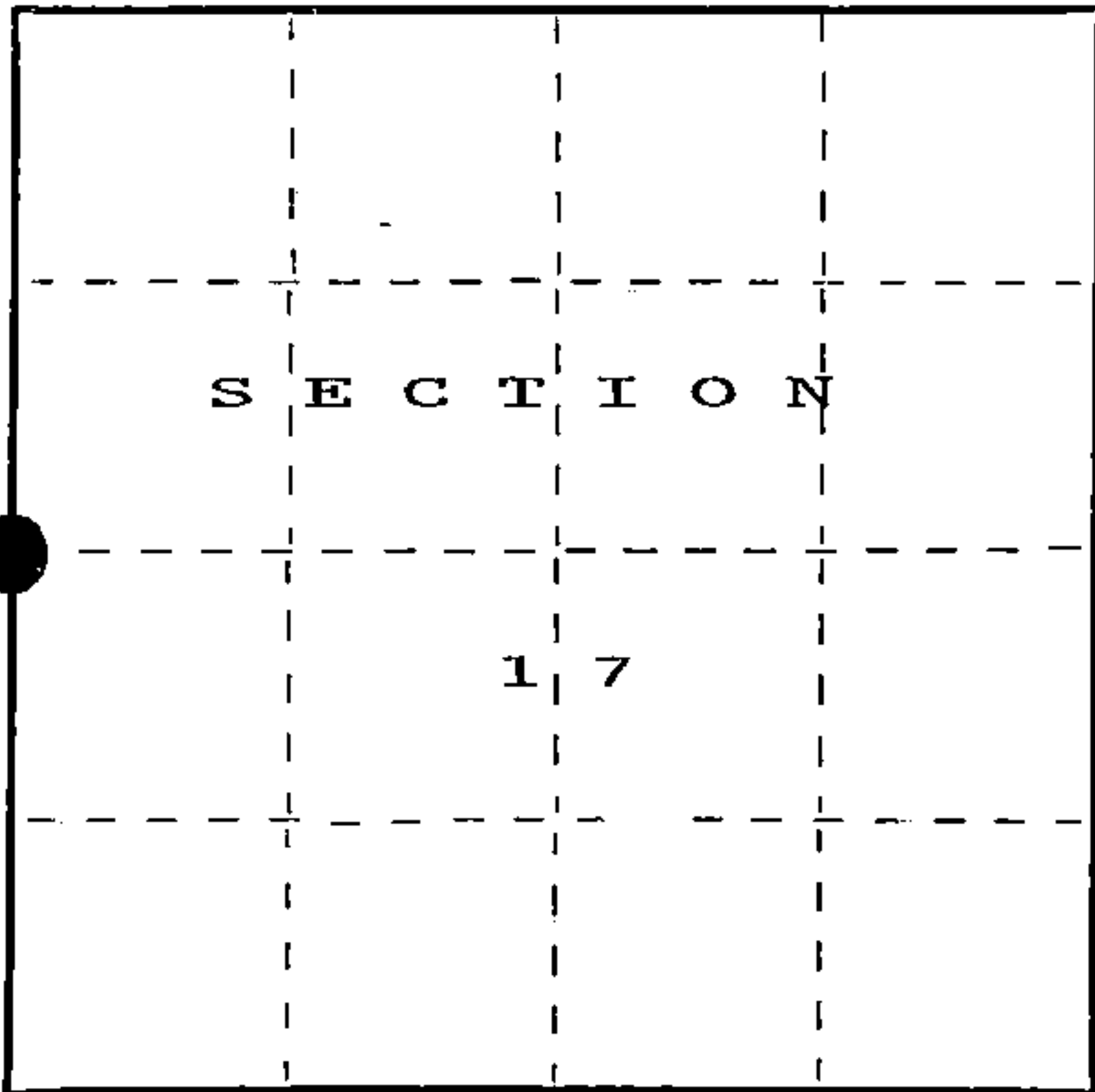
Stock No. 26273

DOCUMENT NUMBER

132181

State of Wisconsin } ss.  
County of FOREST  
I, John Schulke, do hereby  
certify that on the 14th day  
of October, 1986, I found  
evidence of the West Quarter  
corner of Section 17  
Township 37, North, Range  
12 East, Fourth Principal Meridian,  
as described hereon; and that from this evidence  
I established a new monument and accessories  
as described hereon to perpetuate the original  
location of this corner.

Resident witnesses:



○ = Corner monument restored.

History of original corner establishment:

Original Government Survey in 1859 by William Daugherty, U.S. Deputy Surveyor  
Set wooden post with the following bearing trees:

Tamarack	6"	N31°E	27 links
Tamarack	7"	S52°W	38 links

Description of corner evidence found:

Found no evidence.

Description of monument and accessories I established to perpetuate the original location of this corner.

Set a 2 1/2" diameter aluminum pipe monument, 5 feet long, 4 feet in the ground, with  
an aluminum cap stamped; T37N, R12E, 1/4, S17, S18, 1986, S-1665. Established the  
following new bearing trees which are blazed, scribed, painted and tagged.

White Pine	14"	N59°E	26.29 feet	(on a rock outcrop)
Tamarack	4"	S76°E	51.49 feet	
Spruce	4"	N86°W	45.36 feet	
Spruce	5"	S05°W	37.69 feet	
Steel sign post		Southwest	1.0 feet	

Dated at Ludington, Michigan, Wis., this fifth day of January, 1987.

Signature John C. Schulke Title Land Surveyor Registration No. S-1665  
(County Surveyor, Registered Land Surveyor, or other duly authorized official)

Office of Register of Deeds, County of Forest, I hereby certify that the within  
instrument was filed in this office for record on the 24th day of February, 1987  
at 2:00 o'clock P. M.

Paul Achenbrenner  
(Register of Deeds)

By \_\_\_\_\_ Deputy

43712182000

(e) Describe any material discrepancy between the location of the corner as restored or reestablished and the location of that corner as previously restored or reestablished by distance and direction. Show the discrepancy on the plan view drawing under (d), above. Show the distances between the corner as previously restored or reestablished and (1) the corner as restored or reestablished, and (2) to at least 2 of the witness monuments shown on the drawing in (d), above.

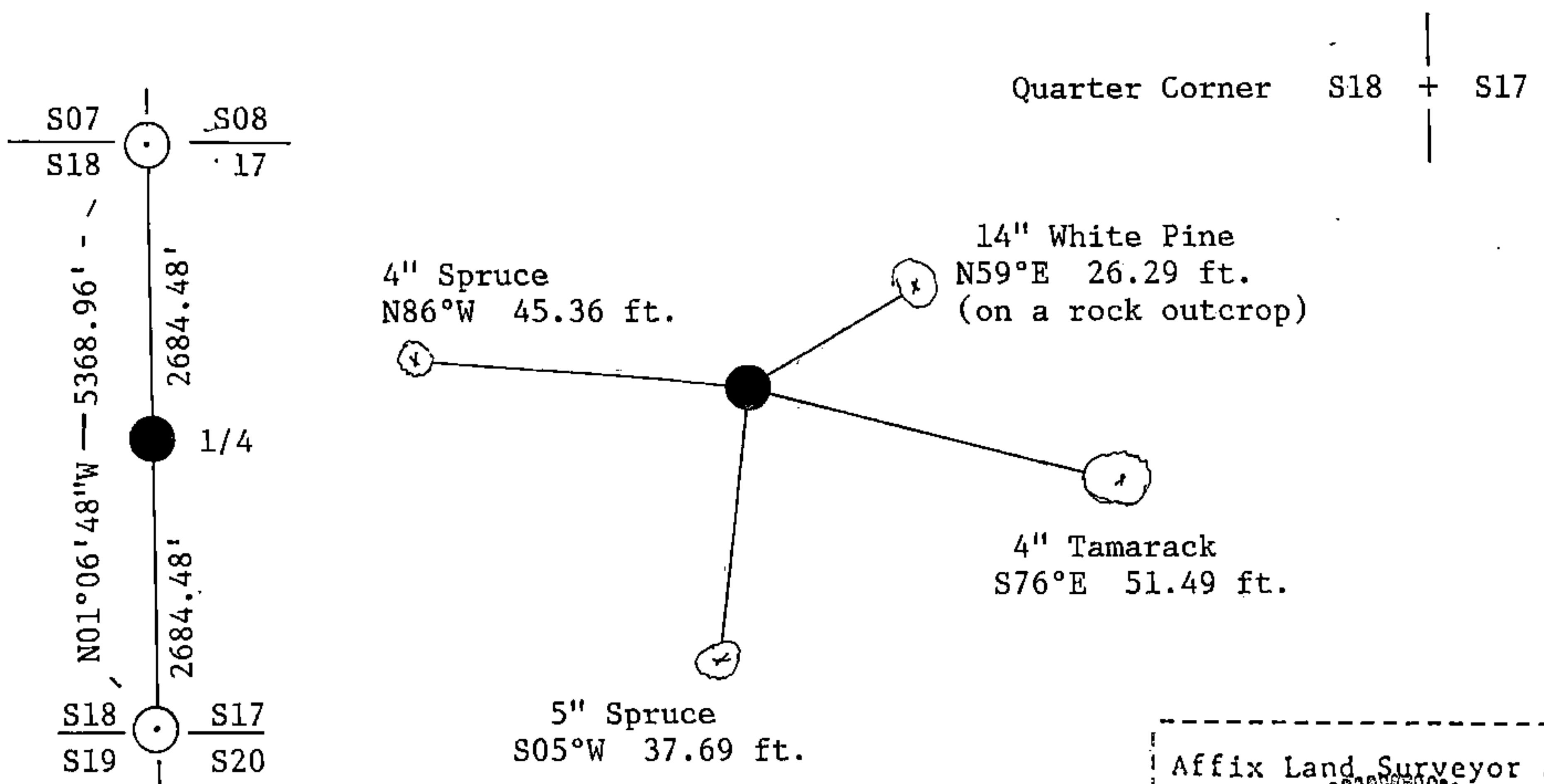
No discrepancy, first corner restoration.

(f) Was the corner restored through acceptance of (1) an obliterated evidence location, or, (2) a found perpetuated location?

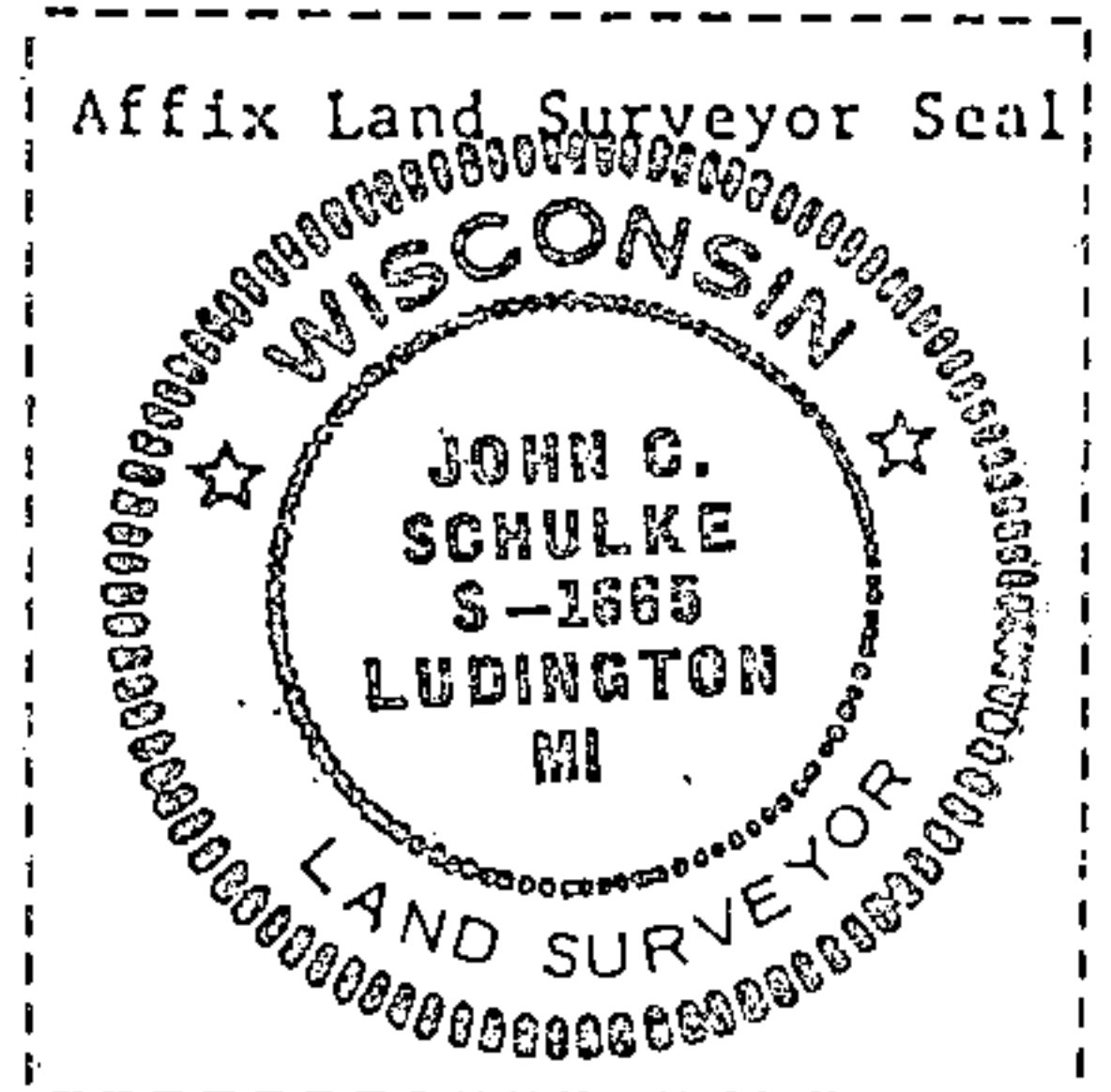
No, corner was declared lost.

(g&h) Was the corner reestablished through lost corner proportionate methods? If so, show the method, including the directions and distances to other public land survey corners used as evidence or used for proportioning in determining the corner location?

The corner was reestablished through lost corner proportionate methods.



(i) I, John C. Schulke  
(type or print name) certify that the corner location shown on this record was determined by me or under my direction and control and that this U.S. Public Land Survey Monument Record is correct and complete to the best of my knowledge and belief.



John C. Schulke Jan. 5th, 1987  
Signature Date

Certificate Ready for Filing:

Dale S. Staege  
District Ranger

2/24/87  
Date