

U.S. PUBLIC LAND SURVEY MONUMENT RECORD

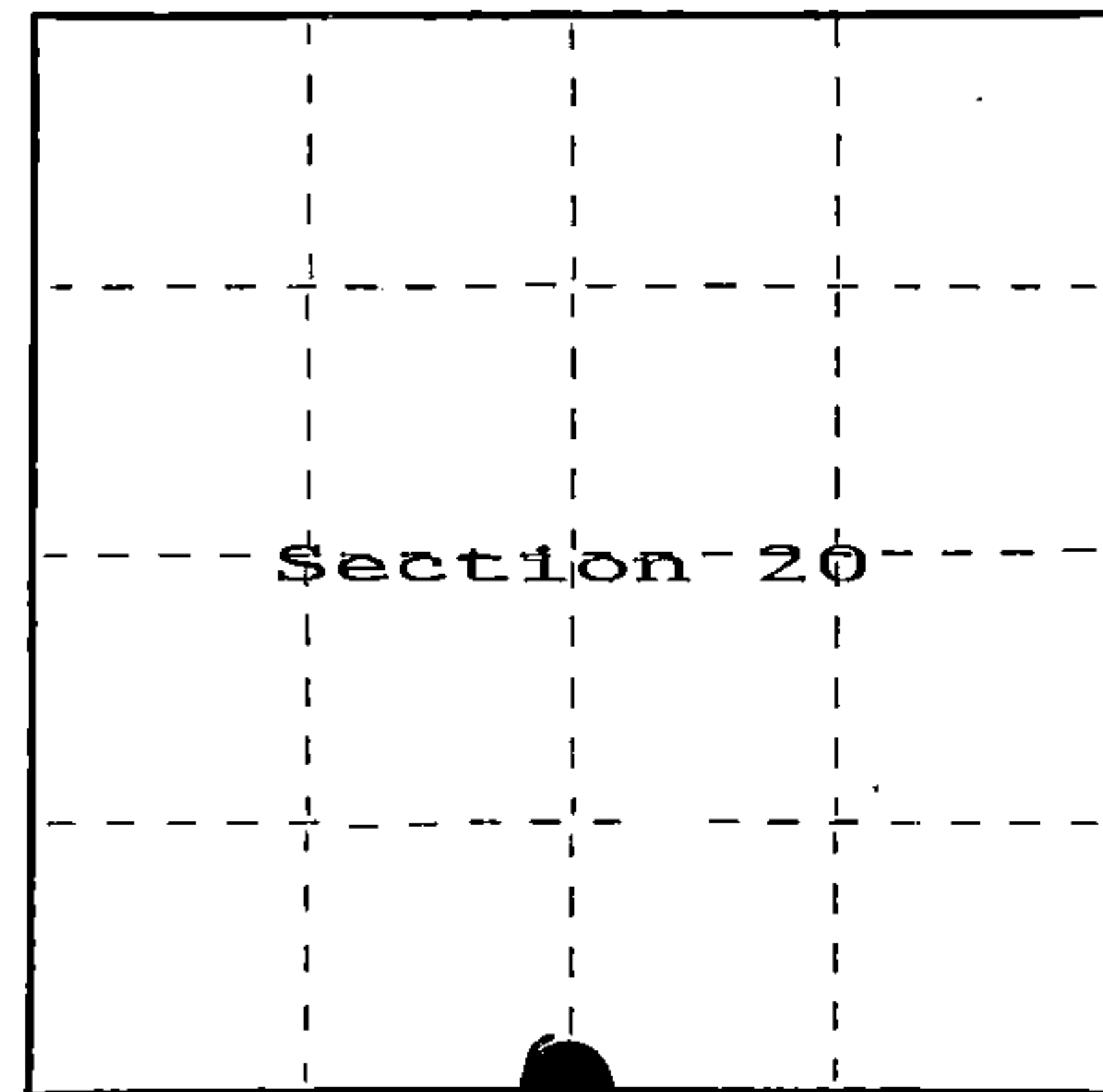
Index No. R-7

State of Wisconsin

County of Forest } ss.

I John C. Schulke, do hereby certify that on the Fourth day of November, 1986, I found evidence of the South Quarter corner of Section 20 Township Thirty Seven, North, Range Twelve East, Fourth Principal Meridian, as described hereon; and that from this evidence I established a new monument and accessories as described hereon to perpetuate the original location of this corner.

Resident witnesses:



○ = Corner monument restored.

History of original corner establishment:

1. Original corner established in 1859 by William Daugherty, U.S. Deputy Surveyor. Set wooden post with the following bearing trees:

Cedar	14"	N45°E	11 lks.
Cedar	10"	S63°W	13 lks.

Description of corner evidence found:

No evidence found.

Description of monument and accessories I established to perpetuate the original location of this corner.

Set 2 1/2" dia. X 3' aluminum magnetic capped monument stamped to identify the corner. Set steel sign post Northwest 0.8 feet. Blazed, scribed, painted and tagged the following bearing trees:

Sugar Maple	4"	N62°W	38.22 feet
Sugar Maple	10"	N38°E	8.80 feet
Sugar Maple	10"	S30°E	18.40 feet
Sugar Maple	6"	S56°W	11.06 feet

Dated at Ludington, Michigan, Wis., this fifth day of January, 1987.

Signature John C. Schulke Title Land Surveyor Registration No. S-1665
(County Surveyor, Registered Land Surveyor, or other duly authorized official)

Office of Register of Deeds, County of Forest, I hereby certify that the within instrument was filed in this office for record on the 24th day of February, 1987 at 2:00 o'clock P. M.

Paul Aschenbrenner
(Register of Deeds)

By _____ Deputy

REGISTER'S OFFICE
Forest County, Wis.

Received for record this 24th day of January, A.D., 1987 at 2:00 o'clock P. M. and recorded in Vol. CORNER RESTORATIONS page R-7

DOCUMENT NUMBER
132185

Stock No. 26273

FORM NO. 985-A

HCMiller Company
Quality Systems

Register of Deeds

43712 20 0010

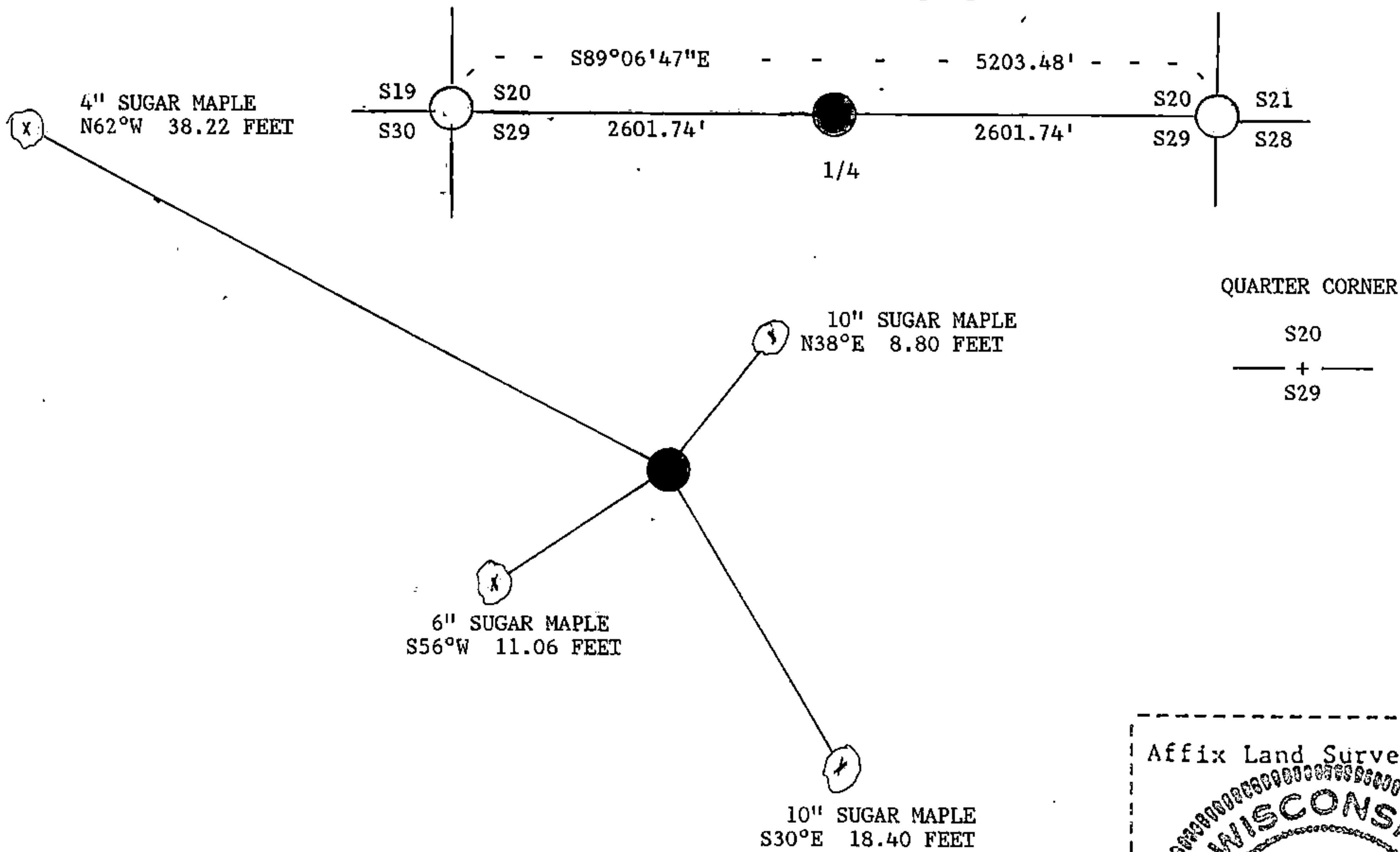
(e) Describe any material discrepancy between the location of the corner as restored or reestablished and the location of that corner as previously restored or reestablished by distance and direction. Show the discrepancy on the plan view drawing under (d), above. Show the distances between the corner as previously restored or reestablished and (1) the corner as restored or reestablished, and (2) to at least 2 of the witness monuments shown on the drawing in (d), above.

No discrepancy, first corner restoration.

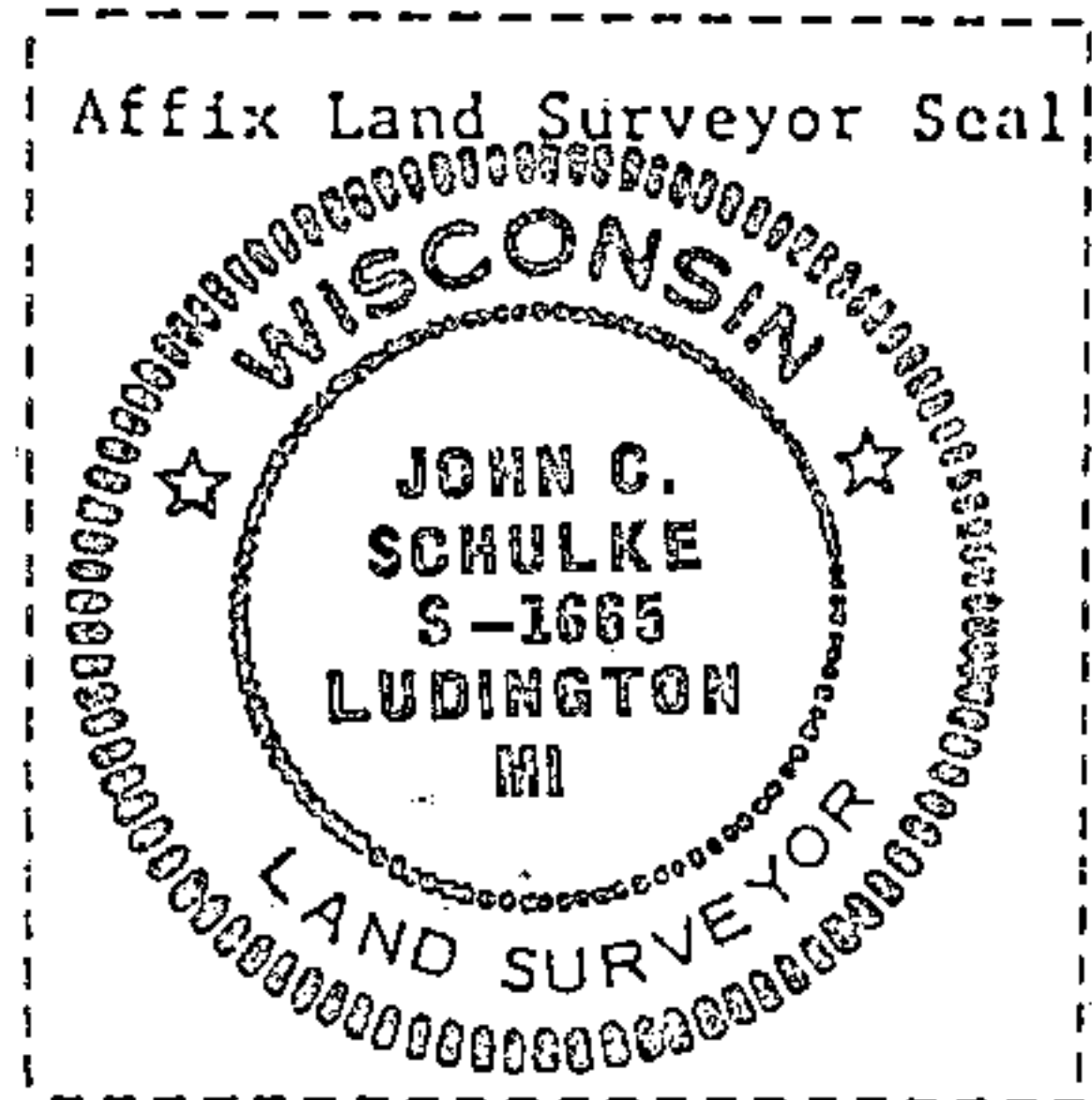
(f) Was the corner restored through acceptance of (1) an obliterated evidence location, or, (2) a found perpetuated location?

(g&h) Was the corner reestablished through lost corner proportionate methods? If so, show the method, including the directions and distances to other public land survey corners used as evidence or used for proportioning in determining the corner location?

The corner was reestablished through lost corner proportionate methods.



(i) I, John C. Schulke
(type or print name) certify that the corner location shown on this record was determined by me or under my direction and control and that this U.S. Public Land Survey Monument Record is correct and complete to the best of my knowledge and belief.



John C. Schulke January 5th, 1987
signature Date

Certificate Ready for Filing: Dale S. Staeg 2/24/87
District Ranger Date