

U.S. PUBLIC LAND SURVEY MONUMENT RECORD

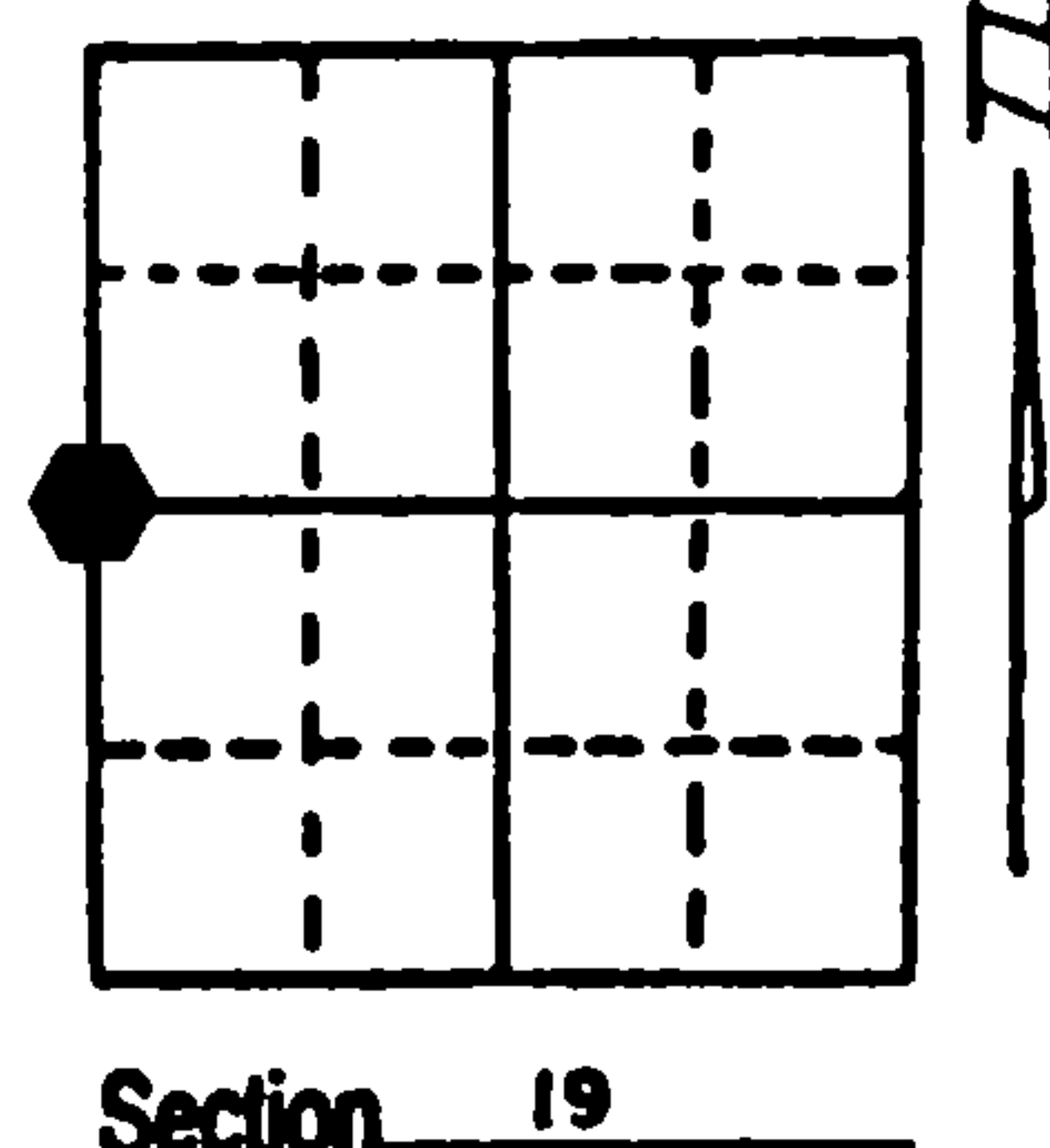
Note: This form is intended and designed to fulfill all requirements of Wisconsin Administrative Code, Chapter A-E 7.08 U.S. Public Land Survey Monument Record (3) (a) (b) (c) (d) (e) (f) (g) (h) (i). An additional sheet may be added if necessary to conform with said requirements.

(a) Corner location: Township 37 North

Range 13 East/West

Town/City/Village ARGONNE

County FOREST



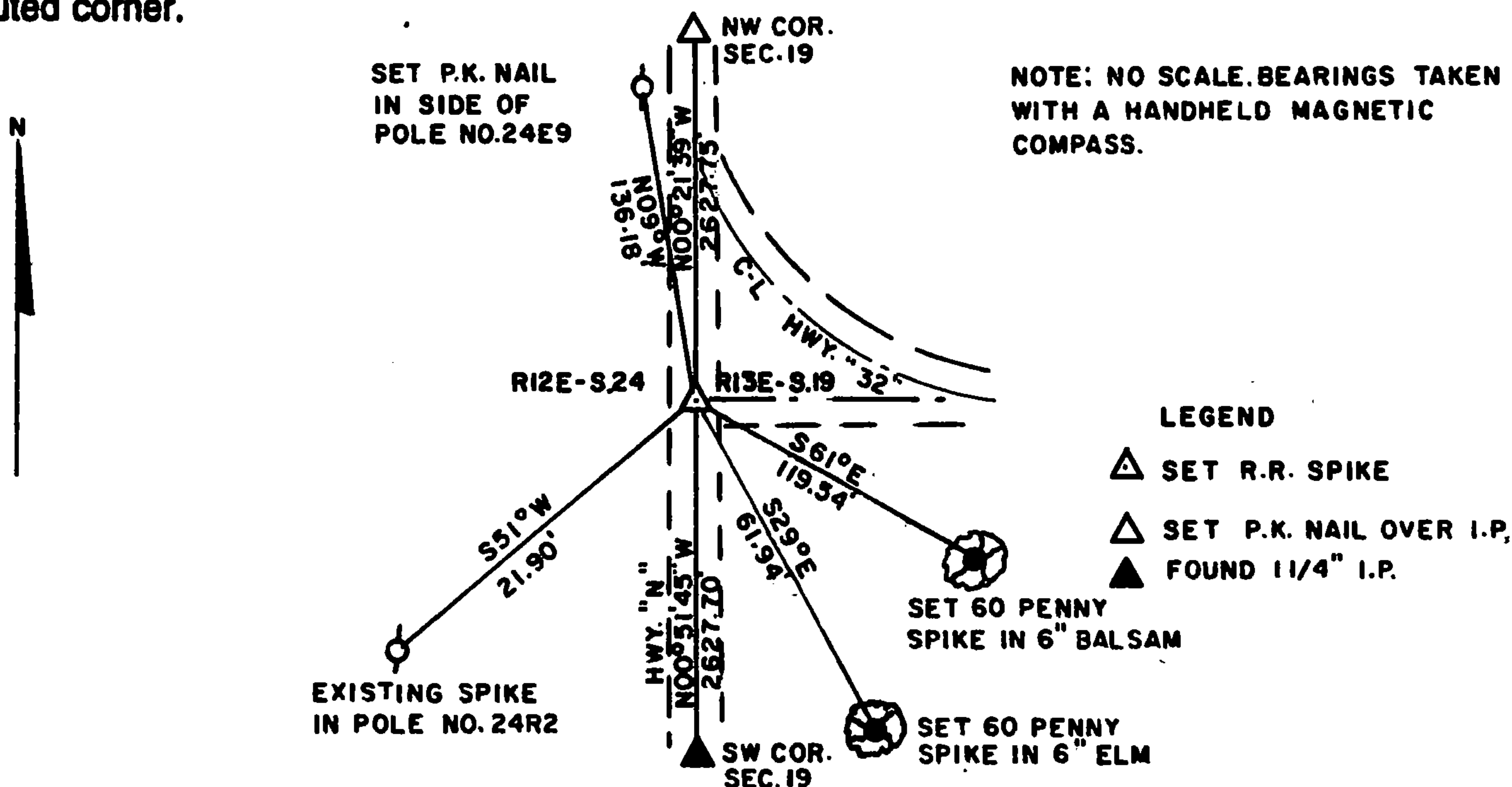
Section 19

(b) (f) (g) (h) Description of monument found at this corner and if it was accepted, state all evidence (material, testimonial, occupational, plats, records, other monuments) used as a basis for accepting. If not accepted or if nothing was found, state evidence used as basis for establishing location. If reestablished through lost corner proportionate methods, indicate all monuments, distances and directions used to establish. Indicate type of monument found or set and sign post.

Gov't- Set 1/4 post and made the following B.T.'s: Sugar 14" West 2 Links, Birch 14" S2° E 31 Links.
1997- William E. Badow set Railroad Spike and witnessed as shown below.

REGISTER'S OFFICE
Forest County, Wis.
Received for record this 18th day
of November A.D., 2002 at
9:00 o'clock A.M. and recorded
in Vol. Corner Restoration
page P-1
Kay Swanson, Deputy
Register of Deeds

(c) (d) (e) Plan view of corner with ties to at least 4 witness monuments. If in disagreement with previously established corner, show the distances between the two corners and also indicate the ties to the disputed corner.



(i) I, William E. Badow
(type or print name) certify that the corner location on this record was determined by me or under my direction and control and that this U.S. Public Land Survey Monument Record is correct and complete to the best of my knowledge and belief.

Signature

Date



Stamp

43712242000

Index No. P 1

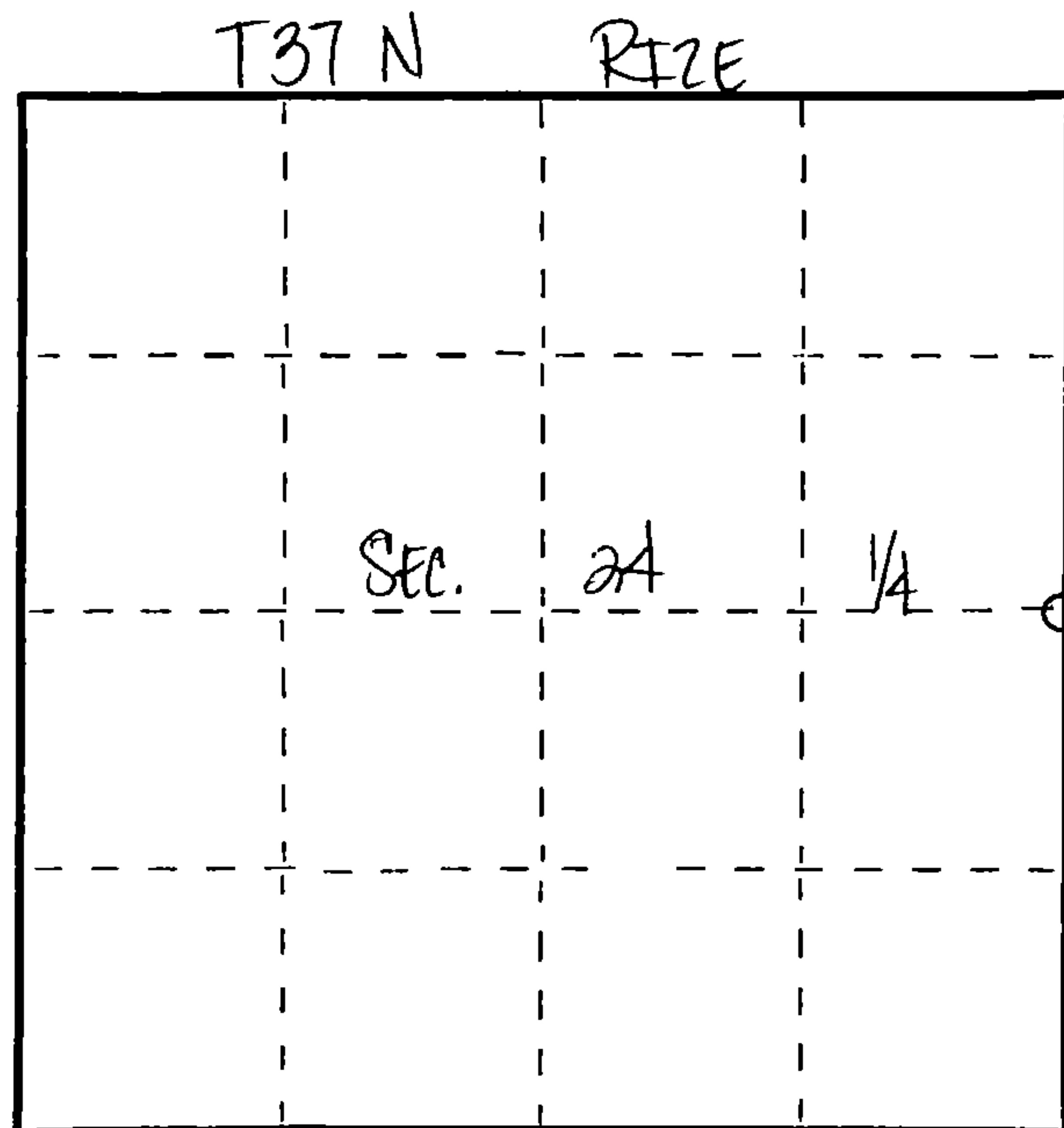
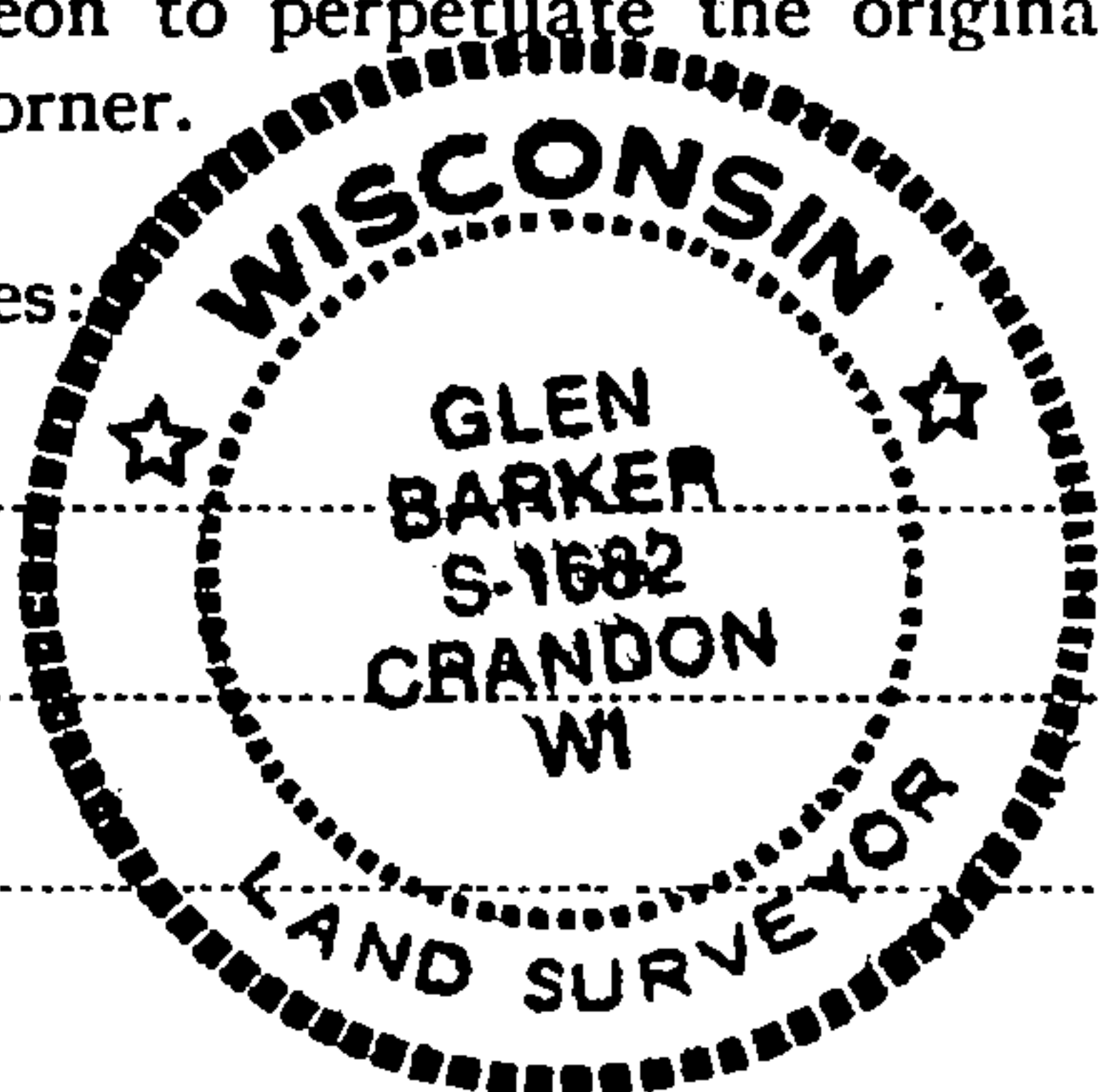
Document Number
188577

FORM 985 M. C. MILLER CO., MILWAUKEE

State of Wisconsin }
County of FOREST } ss.

I, GLEN BARKER, do hereby
certify that on the _____ day
of REESTABLISHED 19____, I found
evidence of the QUARTER
corner of SECTIONS 19 & 24
Township 37, North, Range
12 & 13 EAST, Fourth Principal Meridian,
as described hereon; and that from this evidence
I established a new monument and accessories
as described hereon to perpetuate the original
location of this corner.

Resident witnesses:



CERTIFIED LAND CORNER RESTORATION

Index No. P-1

History of original corner establishment:

ALFRED MILLARD 1857
SUGAR 10" N80W 16 LKS
SUGAR 10" S70E 22 LKS

Description of corner evidence found:

In 1997, William Bandow R.L.S. set a railroad spike in the inter section of Hwy "N" and Hwy "32" with accessories as described. 6" Balsam S61°E 119.54' - 6" Elm S89°E 61.94' P.P. no. 24 R2 S51°W 21.90' - P.P. no. 24 E9 N09° 136.18' See previous land corner certificate. Document no. 177483. Relocation of Hwy "32" destroyed monument and accessories. Reestablished quarter corner retracing Bandows survey. Quarter corner set at S00° 21' 39"E 2627.68' of Northeast section corner, and N00° 51' 45"W 2627.71 of Southeast section corner of section 24.

Description of monument and accessories I established to perpetuate the original location of this corner.

Set a 1/2" rebar flush with subsurface of new asphalt with P.K. over rebar.
Set a 2 1/2" aluminum pipe for reference monument west 54.0 feet stamped to identify corner.

Set four 1" iron pipe for reference pipe

- (1) S74° 30' 02"E 173.20'
- (2) S47° 15' 14"E 216.61'
- (3) S48° 49' 13"W 76.00'
- (4) N42° 55' 05"W 85.51'

Dated at Crandon, Wis., this 15th day of September, 192005

Signature Glen Barker Title Registered Land Surveyor Registration No. 1682
(County Surveyor, Registered Land Surveyor, or other duly authorized official)

Office of Register of Deeds, County of FOREST, I hereby certify that the within
instrument was filed in this office for record on the 15th day of SEPTEMBER, 192005
at 3:50 o'clock P M.

Paul Ackermann
(Register of Deeds)

By _____ Deputy

43712242000