

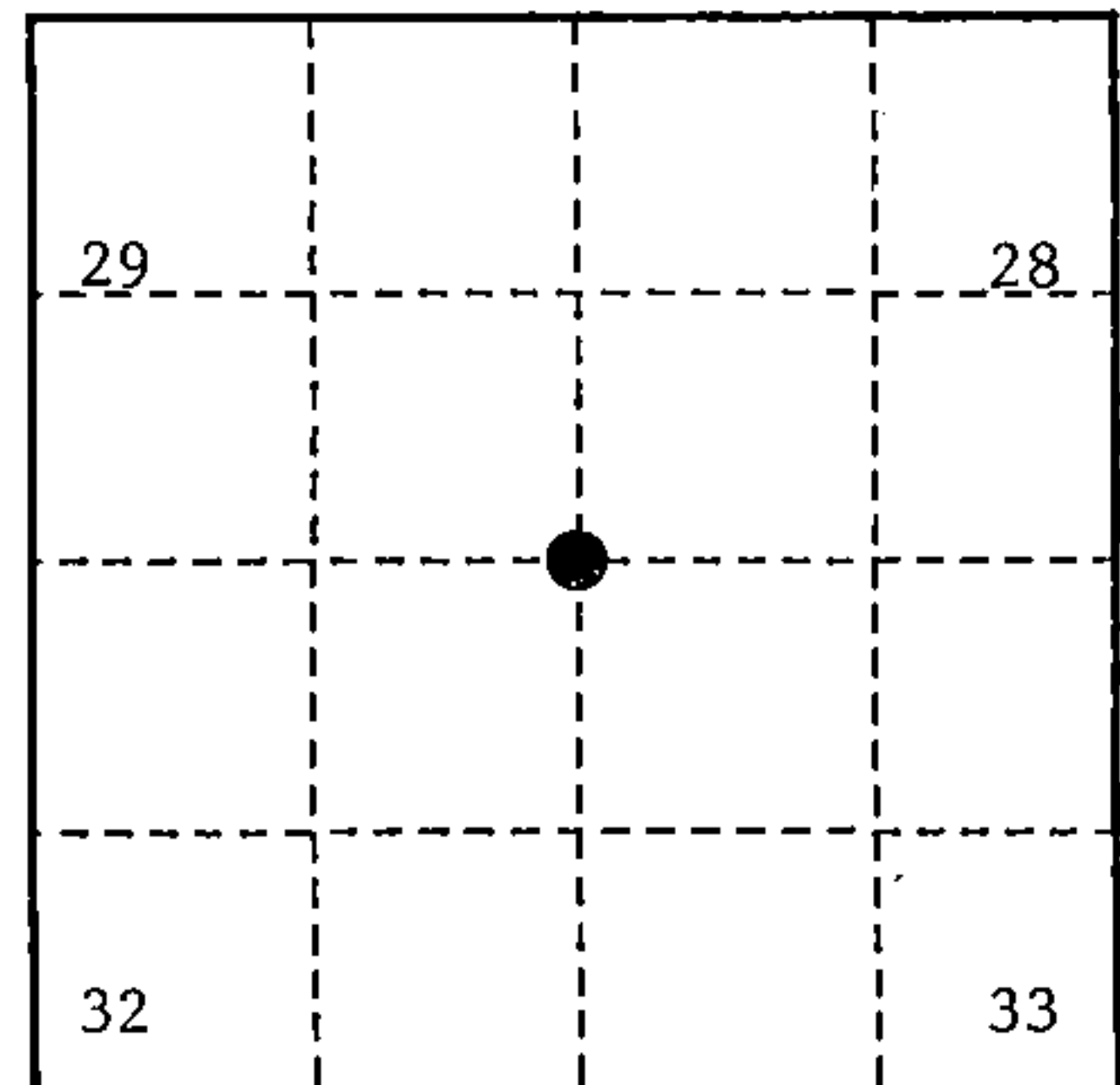
U. S. PUBLIC LAND SURVEY MONUMENT RECORD

INSTRUCTIONS:

This record shall show the location of the corner and shall include all of the following nine elements (a through i).

- (a) Identify the corner by reference to the U.S. public land survey system.
 ○ = Corner monument restored.

Section Corner to Sections 28, 29, 32, 33
 T37N, R12E, Forest County, Wisconsin



- (b) Describe any record evidence, monument evidence, occupational evidence, testimonial evidence or any other material evidence you considered, and whether the monument was found or placed.

Original Government Survey in 1859 by William E. Daugherty.

In 1987, John C. Schulke, RLS, restored the corner position by proportionate measurement and set a 2½" diameter aluminum pipe monument 3 feet long, with an aluminum cap stamped as follows: T37N, R12E, S29, S28, S32, S33, 1987, S-1665, from which the following bear:

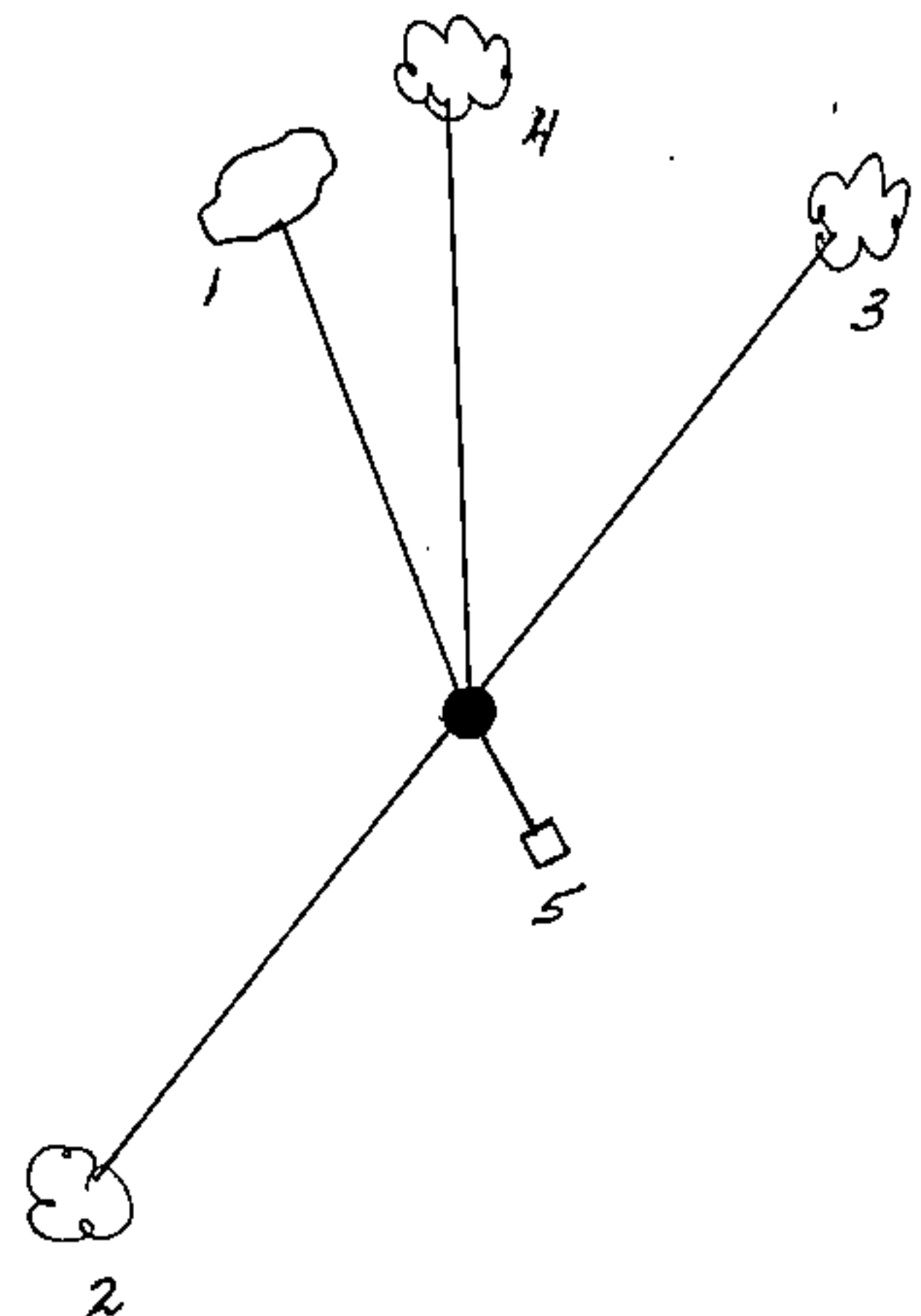
'X' on boulder	8'x6'x5' high	N 31°W	31.30 feet
Ironwood	4"	S 25°W	76.22 feet
White Spruce	5"	N 25°E	63.90 feet
Twin Red Maple	6"	N 18°W	101.35 feet
Steel sign post		SE	1.2 feet

On 9/25/99, Gary L. Pisoni RLS found the above monument and assessories as described below.

- (c) In the plan view drawing below, provide reference ties to at least 4 witness monuments, or, if the location is within a municipality, to at least 2 witness monuments. (witness monuments shall be made of concrete, natural stone, iron or other equally durable material.)

- (d) Show a plan view drawing depicting the relevant monuments and reference ties which is sufficient in detail to enable accurate relocation of the corner monument if the corner monument is disturbed. Indicate north.

- 'X' on boulder, 8'x6'x5' high, N 31°W, 31.30 feet
- Ironwood, 5", S 25°W, 76.22 feet
- Balsam, 10", N 25°E, 63.90 feet
- Twin Red Oak, 8", N 18°W, 101.35 feet
- Steel sign post, SE, 1.2 feet



REGISTER'S OFFICE
 Forest County, Wis.
 Received for record this 27th day
 of October A.D. 1999 at
10:05 o'clock A.M. and recorded
 in Vol. Corner Restoration
 page V-9
Kay Swanson, Deputy
 Register of Deeds

43712 290004

(e) Describe any material discrepancy between the location of the corner as restored or reestablished and the location of that corner as previously restored or reestablished by distance and direction. Show the discrepancy on the plan view drawing under (d), above. Show the distances between the corner as previously restored or reestablished and (1) the corner as restored or reestablished, and (2) to at least 2 of the witness monuments shown on the drawing in (d), above.

None

(f) Was the corner restored through acceptance of (1) an obliterated evidence location, or, (2) a found perpetuated location?

Restored from accepted evidence.

(g & h) Was the corner reestablished through lost corner proportionate methods? If so, show the method, including the directions and distances to other public land survey corners used as evidence or used for proportioning in determining the corner location?

Gary L. Pisoni

(1) I, _____
(type or print name) certify that the corner location shown on this record was determined by me or under my direction and control and that this U.S. Public Land Survey Monument Record is correct and complete to the best of my knowledge and belief.

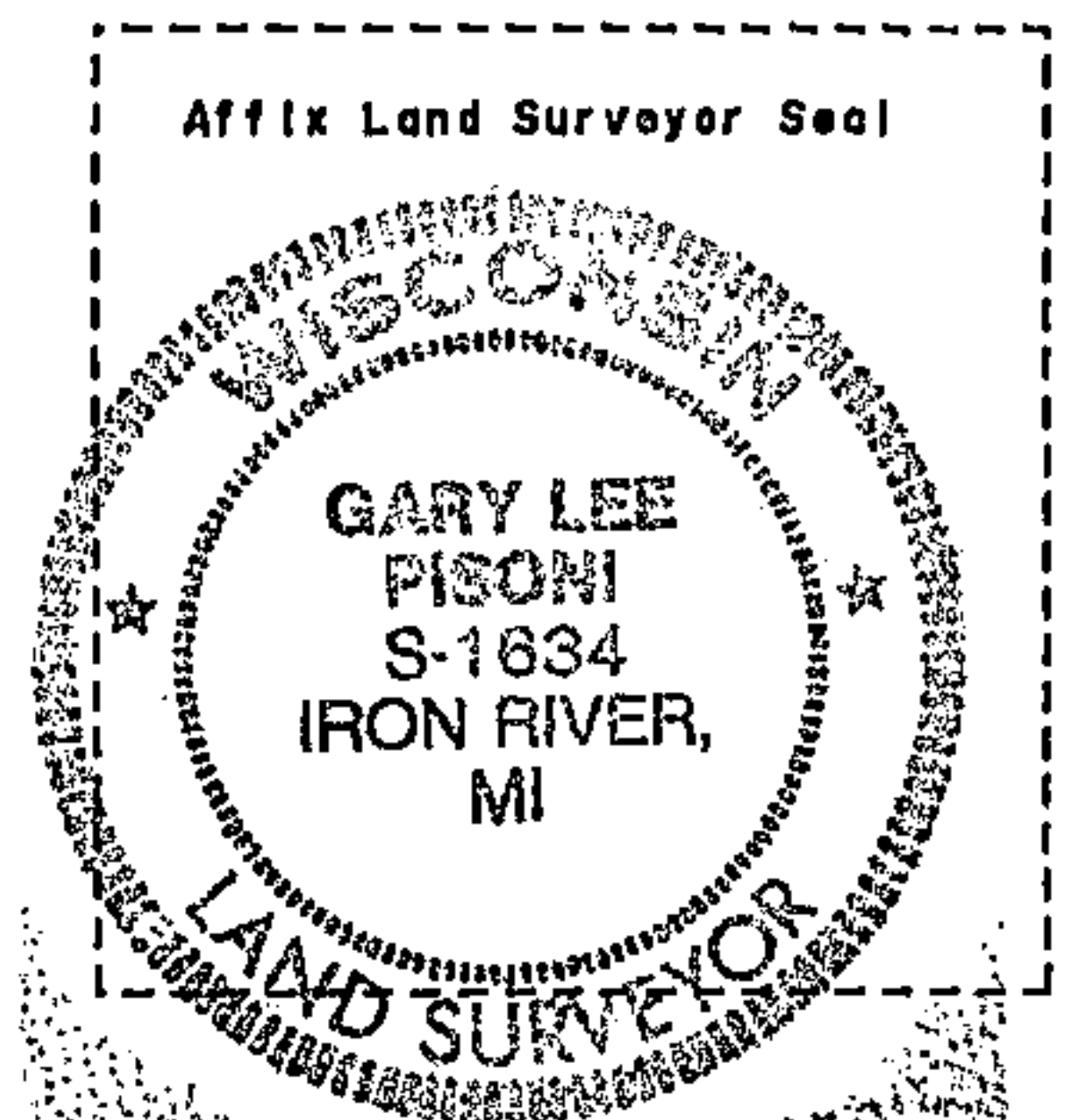
Signature

10-1-99

Date

CERTIFICATE READY FOR FILING:

District Ranger



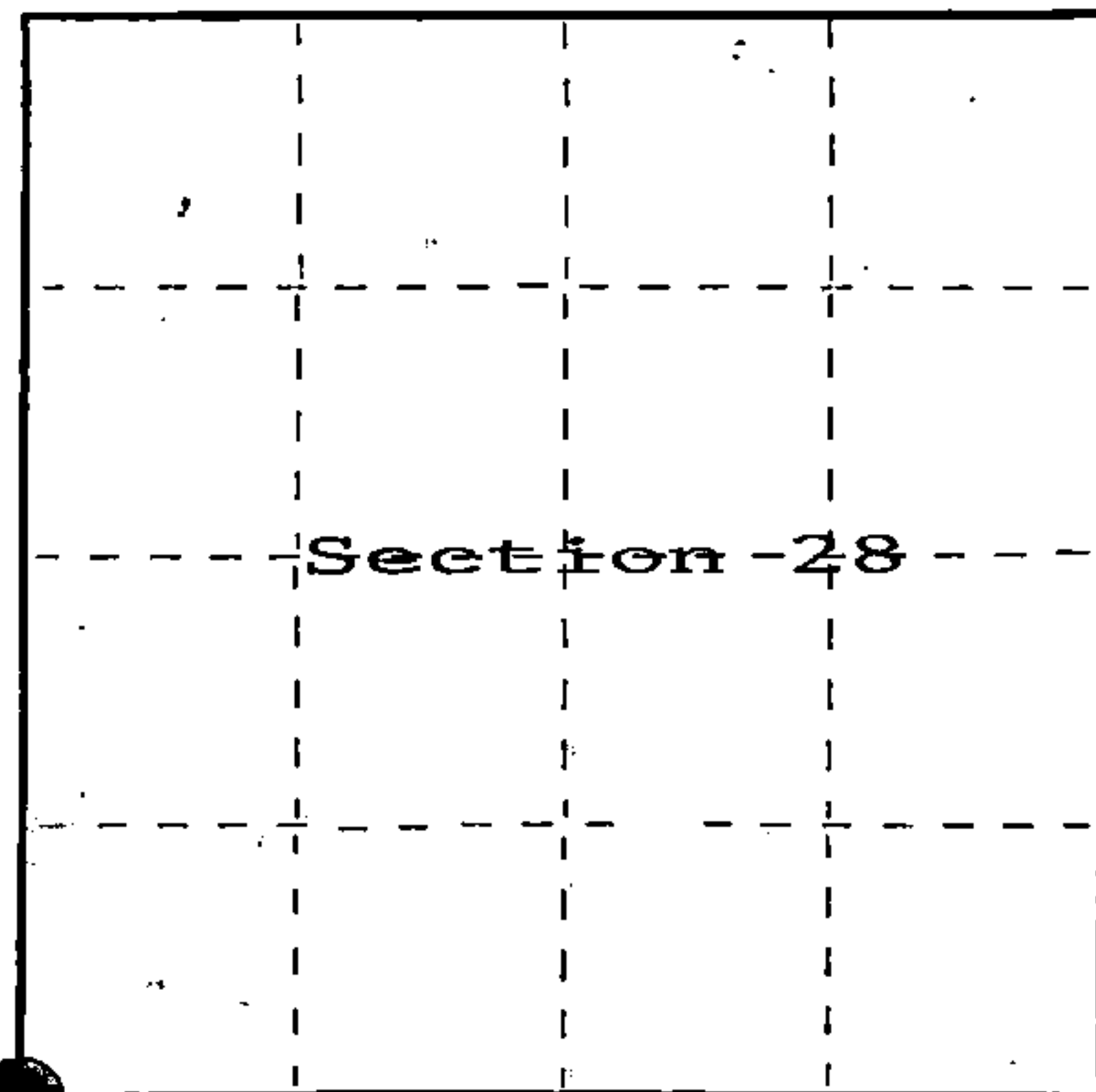
U.S. PUBLIC LAND SURVEY MONUMENT RECORD

Index No. V-9

State of Wisconsin }
County of Forest } ss.

I, John C. Schulke, do hereby certify that on the Eighteenth day of November, 19 87, I found evidence of the Southwest corner of Section 28 Township Thirty Seven North, Range Twelve, Fourth Principal Meridian, as described hereon; and that from this evidence I established a new monument and accessories as described hereon to perpetuate the original location of this corner.

Resident witnesses:



○ = Corner monument restored.

History of original corner establishment:

Original corner established in 1959 by William Daugherty, U.S. Deputy Surveyor.

Set wooden post with the following bearing trees:

Hemlock	12"	N38°W	24 links
Hemlock	12"	S77°E	11 links

Description of corner evidence found:

No evidence found. Area has been disturbed by construction of roads.

Description of monument and accessories I established to perpetuate the original location of this corner.

Set 2 1/2" X 3' aluminum monument stamped to identify the corner. Established the following reference objects with the bearing trees being scribed, blazed, tagged and painted. Center of Forest Service Road is N30°W a distance of 75 feet.

Chiselled "X" on Boulder 7' in diameter	N31°W	31.30 feet
Twin Red Oak	6" N18°W	101.35 feet
Iron wood	4" S25°W	76.22 feet
White Spruce	5" N25°E	63.90 feet
Steel sign post set	Southwest	1.2 feet

Dated at Ludington, Michigan, this 14th day of January, 19 87.

Signature John C. Schulke Title Land Surveyor Registration No. S-1665
(County Surveyor, Registered Land Surveyor, or other duly authorized official)

Office of Register of Deeds, County of Forest I hereby certify that the within instrument was filed in this office for record on the 11th day of March, 19 87 at 3:30 o'clock P. M.

Paul Aschenbrenner
(Register of Deeds)

By _____ Deputy

FORM NO. 985-A

M.C. Miller Company
Madison, Wisconsin

Stock No. 26273

DOCUMENT NUMBER 132283

43712290000

(e) Describe any material discrepancy between the location of the corner as restored or reestablished and the location of that corner as previously restored or reestablished by distance and direction. Show the discrepancy on the plan view drawing under (d), above. Show the distances between the corner as previously restored or reestablished and (1) the corner as restored or reestablished, and (2) to at least 2 of the witness monuments shown on the drawing in (d), above.

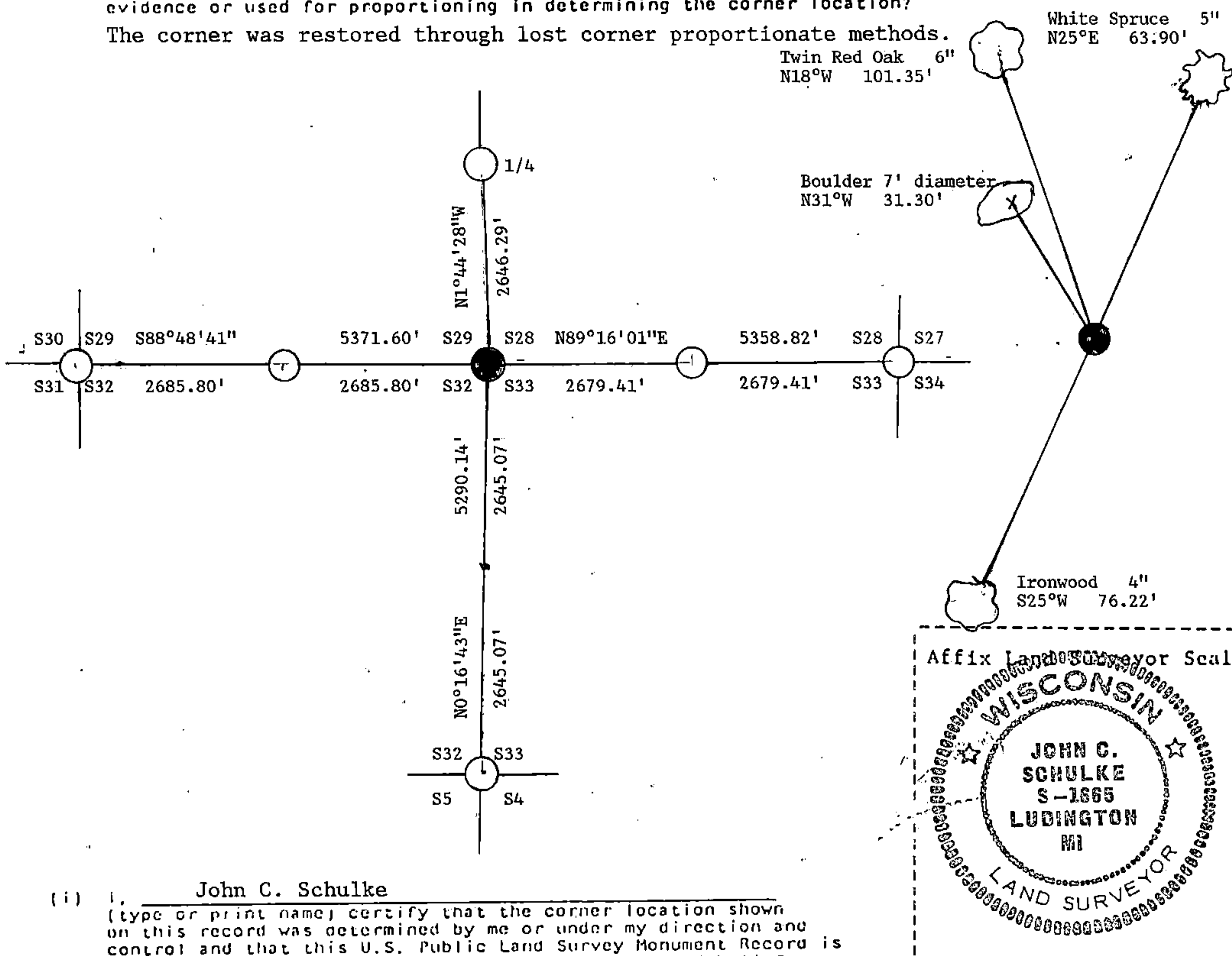
No discrepancy, first corner restoration.

(f) Was the corner restored through acceptance of (1) an obliterated evidence location, or, (2) a found perpetuated location?

See g and h.

(g&h) Was the corner reestablished through lost corner proportionate methods? If so, show the method, including the directions and distances to other public land survey corners used as evidence or used for proportioning in determining the corner location?

The corner was restored through lost corner proportionate methods.



(i) I, John C. Schulke
(type or print name) certify that the corner location shown on this record was determined by me or under my direction and control and that this U.S. Public Land Survey Monument Record is correct and complete to the best of my knowledge and belief.

John C. Schulke January 14th, 1987
Signature Date

Survey requested by: Dale S. Staege 3/4/87
District Ranger Date