

## U.S. PUBLIC LAND SURVEY MONUMENT RECORD

Index No. V-2 &amp; 3

State of Wisconsin

County of FOREST

ss.

I, John C. Schulke, do hereby certify that on the 15th day of May, 1987, I found evidence of the Meander Corner corner of Sections 30 and 31, Township thirty-seven, North, Range twelve East, Fourth Principal Meridian, as described hereon; and that from this evidence I established a new monument and accessories as described hereon to perpetuate the original location of this corner.

Resident witnesses:

## History of original corner establishment:

Original corner established in 1859 by William Daugherty, U.S. Deputy Surveyor  
Set a wooden post with the following bearing trees:

Tamarack	8"	S81°E	122 lks.
Tamarack	8"	N88°E	118 lks.

## Description of corner evidence found:

Recovered 10" tamarack laying down and badly decayed with scribing on the west side of the tree.

## Recovered corner referenced:

Tamarack	10"	N88°E	77.9 ft.
----------	-----	-------	----------

## Description of monument and accessories I established to perpetuate the original location of this corner.

Set 2 1/2" diameter aluminum pipe monument, 60 inches long, 4 feet in the ground with an aluminum cap stamped; T37N, R12E, Meander Corner, S30, S31, 1987, S-1665. Set a steel sign post South a distance of 1.1 feet.

Established the following bearing trees which are blazed, scribed, painted and tagged. The water edge is West a distance of 40 feet.

Maple	4"	S72°E	145.00 feet
Maple clump	9"	N78°E	154.56 feet
Maple	11"	N54°E	201.72 feet
White Birch	11"	N43°E	236.98 feet

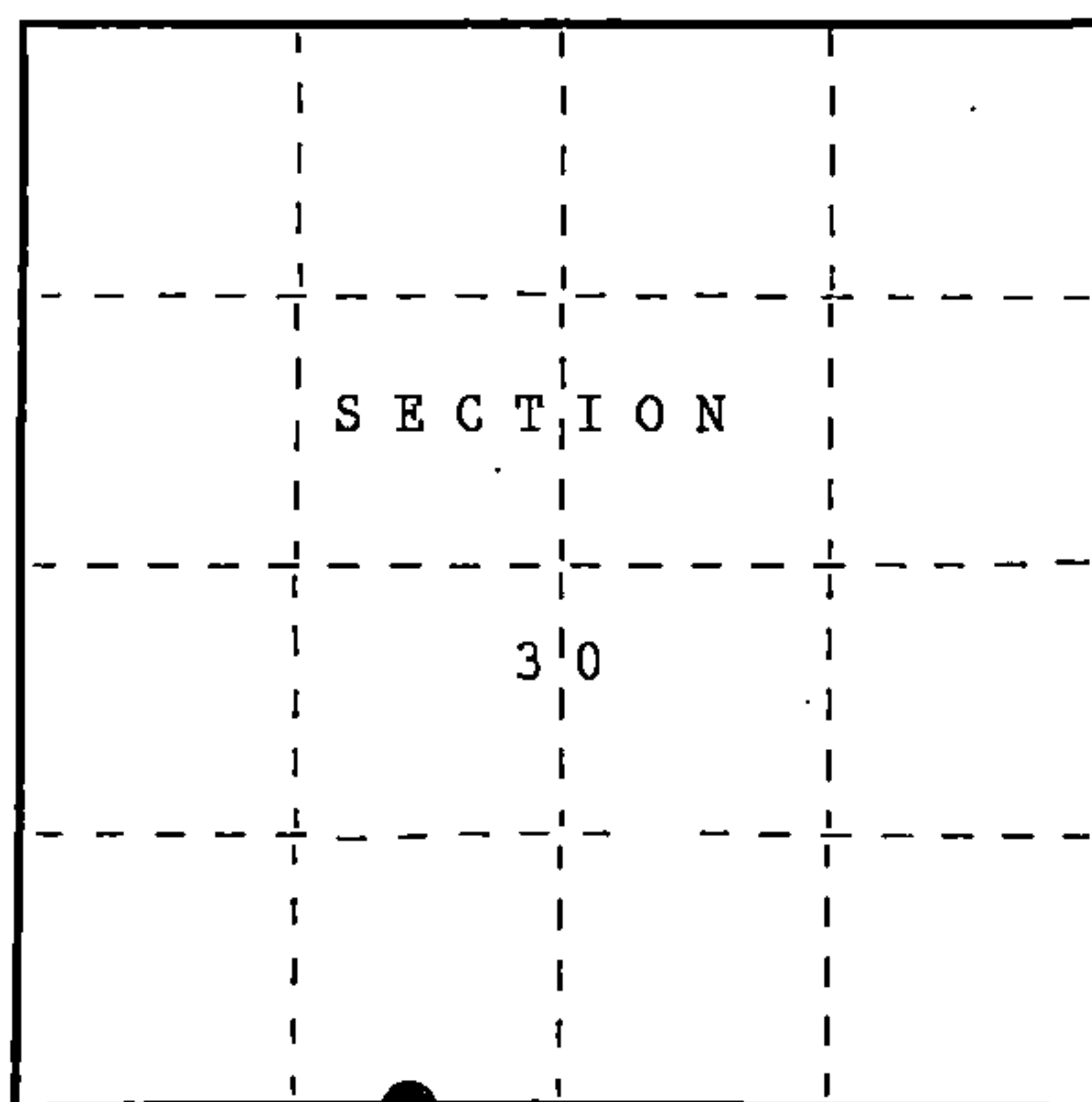
Dated at Hiles, Wis., this 15th day of November, 1987

Signature John C. Schulke Title Land Surveyor Registration No. S-1665  
(County Surveyor, Registered Land Surveyor, or other duly authorized official)

Office of Register of Deeds, County of Forest, I hereby certify that the within instrument was filed in this office for record on the 2nd day of February, 1988 at 9:40 o'clock A. M.

Paul Aschenbrenner  
(Register of Deeds)

By Deputy



○ = Corner monument restored.

FORM NO. 985-A

H.C. Miller Company

Stock No. 26273

DOCUMENT NUMBER 134577

4371230025

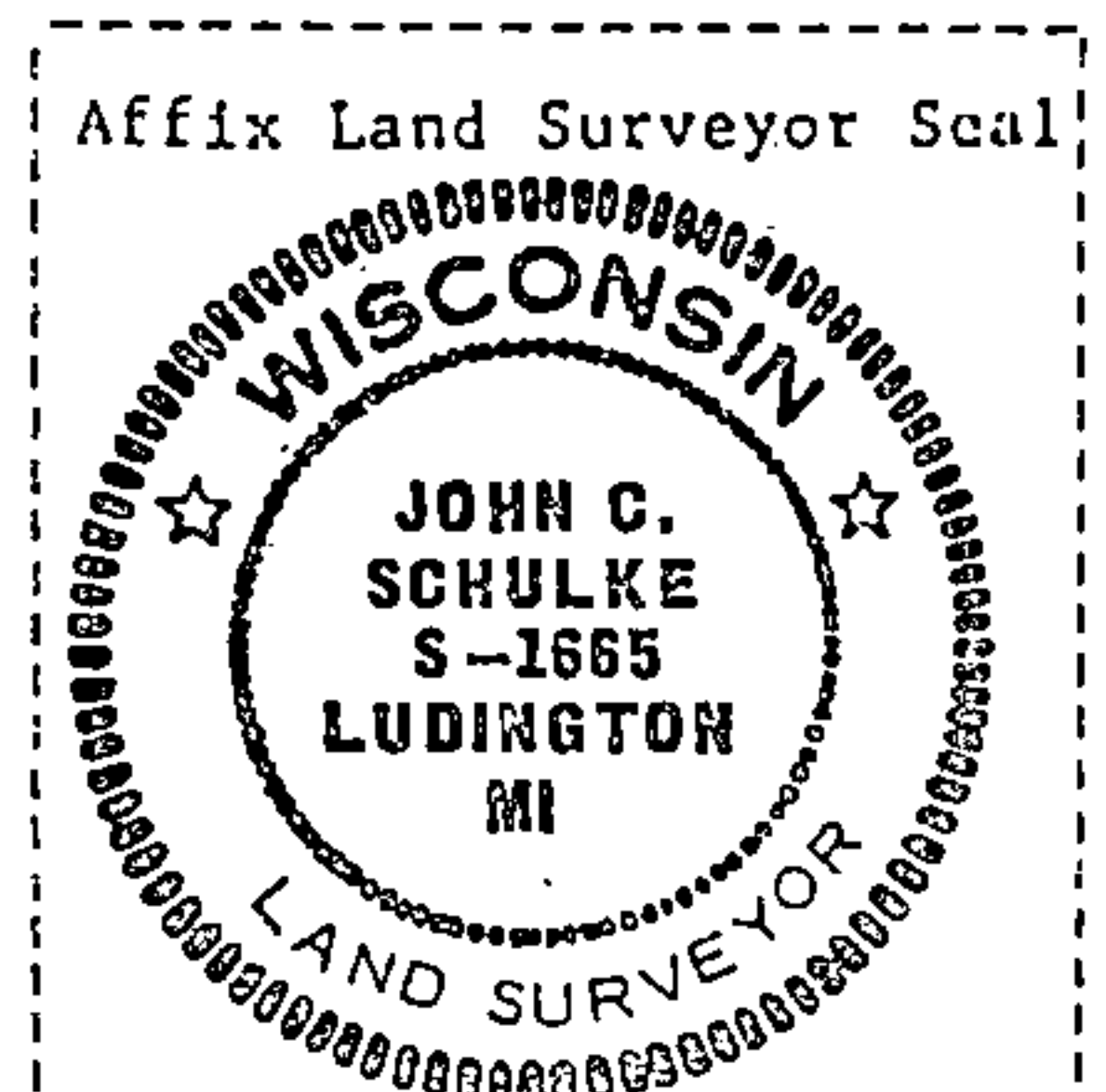
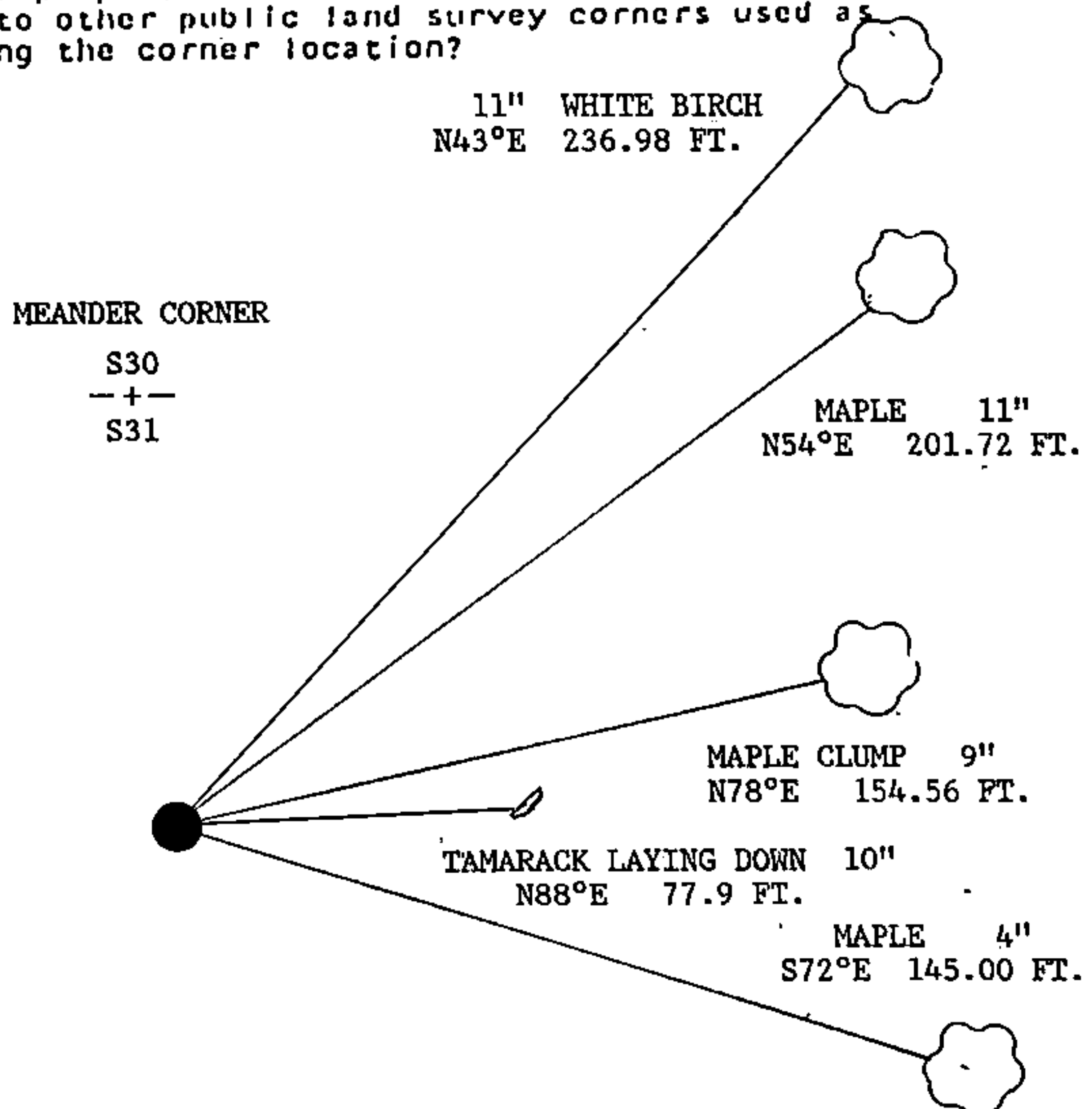
(e) Describe any material discrepancy between the location of the corner as restored or reestablished and the location of that corner as previously restored or reestablished by distance and direction. Show the discrepancy on the plan view drawing under (d), above. Show the distances between the corner as previously restored or reestablished and (1) the corner as restored or reestablished, and (2) to at least 2 of the witness monuments shown on the drawing in (d), above.

No discrepancy.

(f) Was the corner restored through acceptance of (1) an obliterated evidence location, or, (2) a found perpetuated location?

The corner restored through acceptance of an obliterated evidence location.

(g&h) Was the corner reestablished through lost corner proportionate methods? If so, show the method, including the directions and distances to other public land survey corners used as evidence or used for proportioning in determining the corner location?



(i) I, John C. Schulke  
(type or print name) certify that the corner location shown on this record was determined by me or under my direction and control and that this U.S. Public Land Survey Monument Record is correct and complete to the best of my knowledge and belief.

John C. Schulke Nov 9, 1987  
Signature Date

Survey requested by: Dale S. Stagg 2/1/88  
District Ranger Date