

DOCUMENT NUMBER

137131

State of Wisconsin

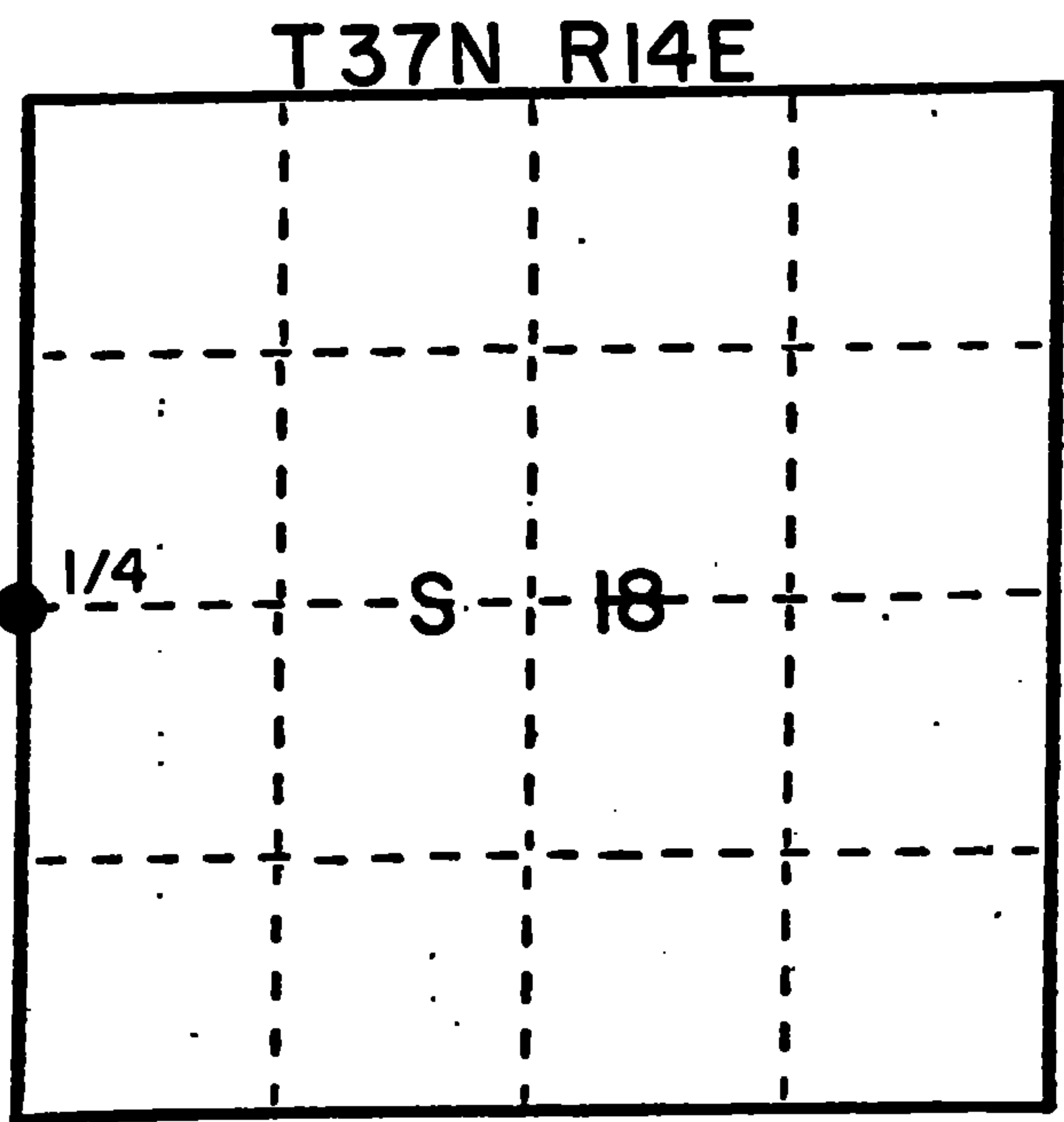
County of Forest } ss.

I, Glen Barker, do hereby certify that on the 20th day of February, 1989, I found the Quarter corner of Section 13 & 18 Township 37 North, Range 13 & 14 East, Fourth Principal Meridian, as described hereon; and that from this evidence I established a new monument and accessories as described hereon to perpetuate the original location of this corner.

Resident witnesses:

Norm Spiess

Don Broadbridge



● = Corner monument restored.

U. S. Public Land Survey Monument Record

Index No. L-1

History of original corner establishment:

Original Corner established by Alfred Millard, Gov. Deputy Surveyor in 1858, from which Fir 14" bears S55E 7 lks and Fir 10" N42W 30 lks.

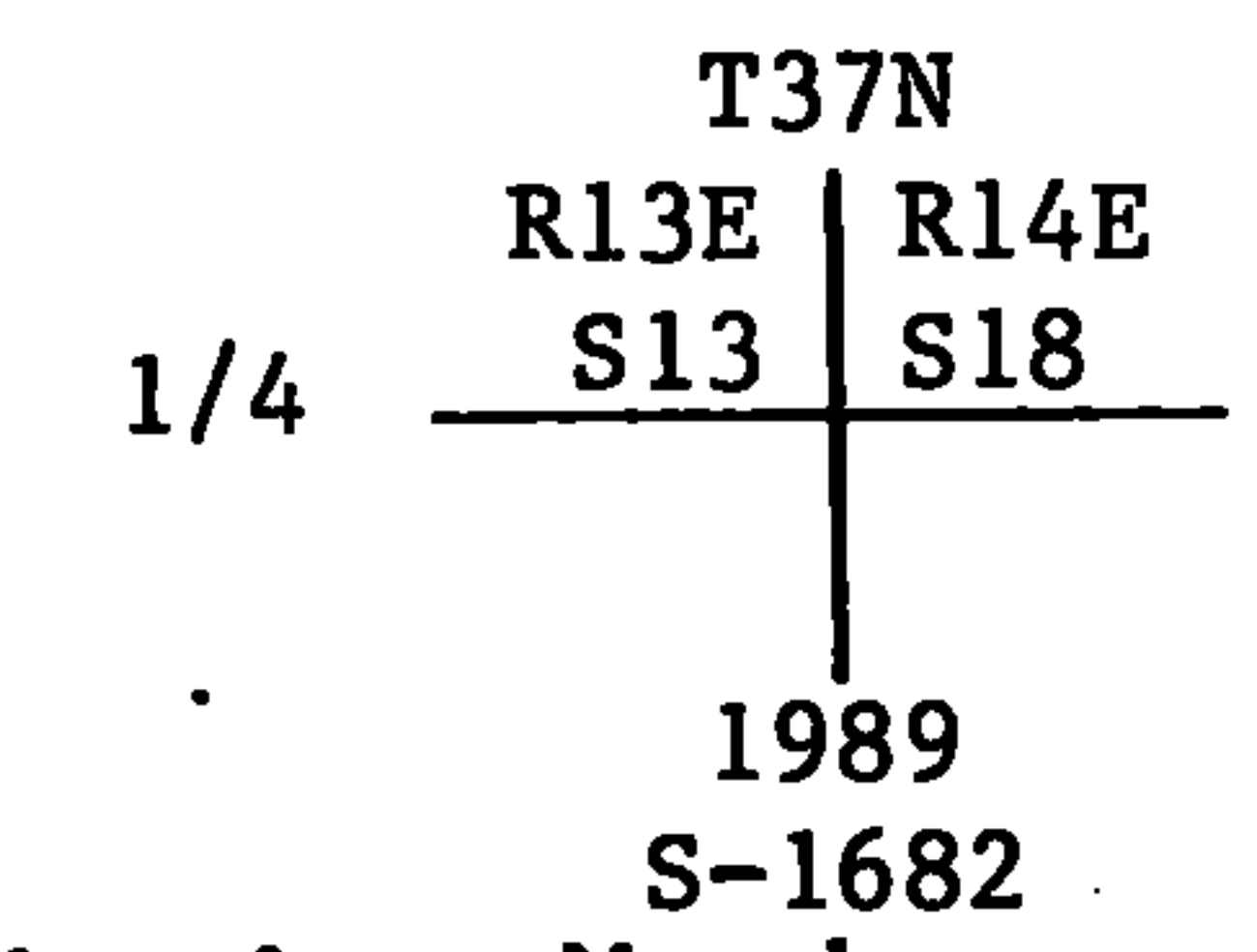
Description of corner evidence found:

Quarter Section Corner established by proportionate method. Total distance from previous recovered SW Section corner to reestablished NW Section corner Section 18 is 5274.83'. Set Quarter Section Corner 2637.42' intermediate.

Description of monument and accessories I established to perpetuate the original location of this corner.

Set a 2 1/4" aluminum Forest County Monument with 3/4" alloy cap stamped Monument projects 6" above ground.

Marked NBTs:
Sugar 6" S51E 17.34'
Sugar 5" N7E 49.55'
Sugar 5" S44W 53.68'
Sugar 5" N58W 22.97'



Dated at Rhinelander, Wis., this 31st day of March, 1989

Signature: Glen Barker Title: Registered Land Surveyor Registration No. 1682
(County Surveyor, Registered Land Surveyor, or other duly authorized official)

Office of Register of Deeds, County of Forest, I hereby certify that the within instrument was filed in this office for record on the 31st day of March, 1989 at 10:25'clock A.M.

Paul Ackebrenner
(Register of Deeds)

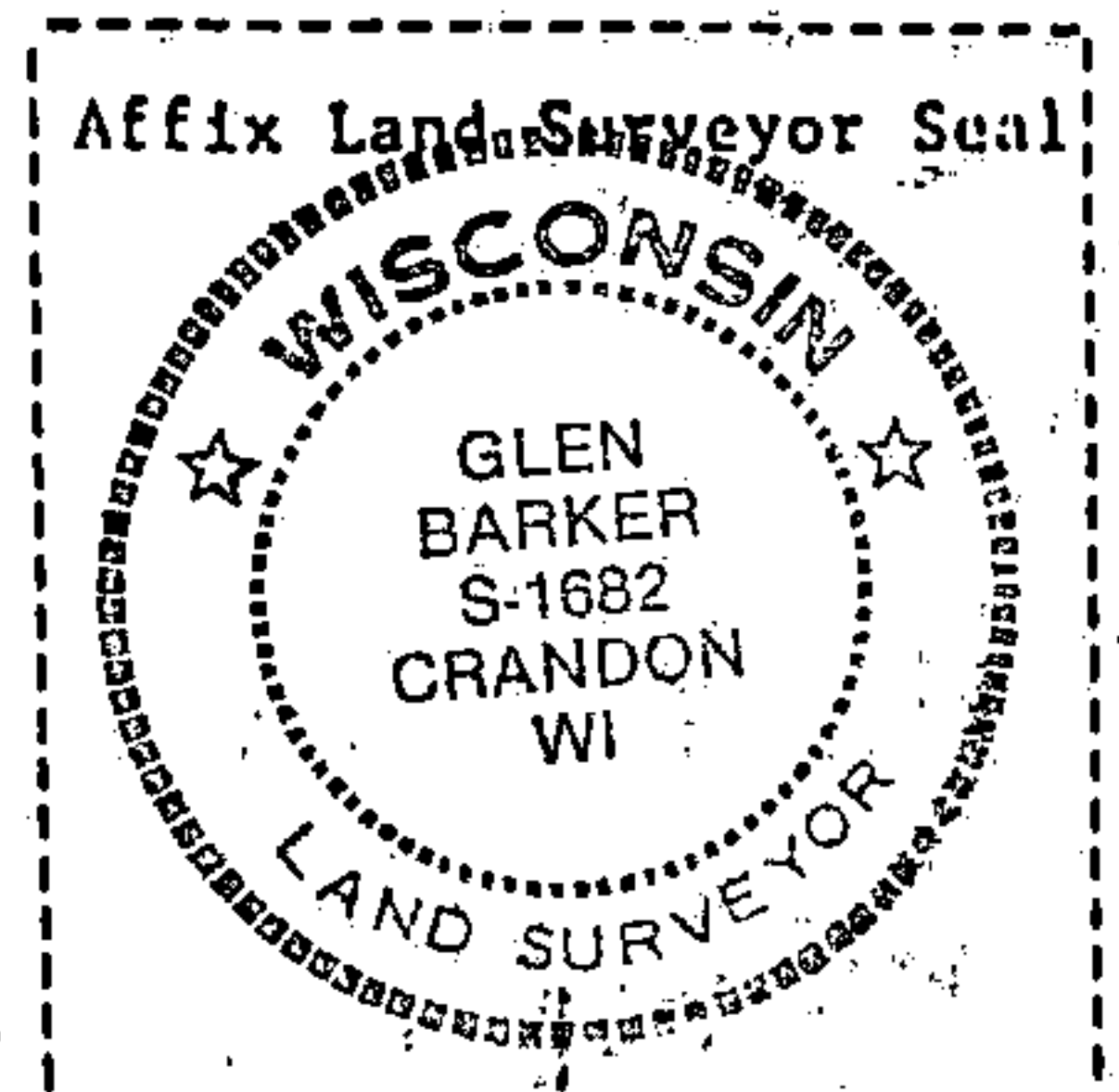
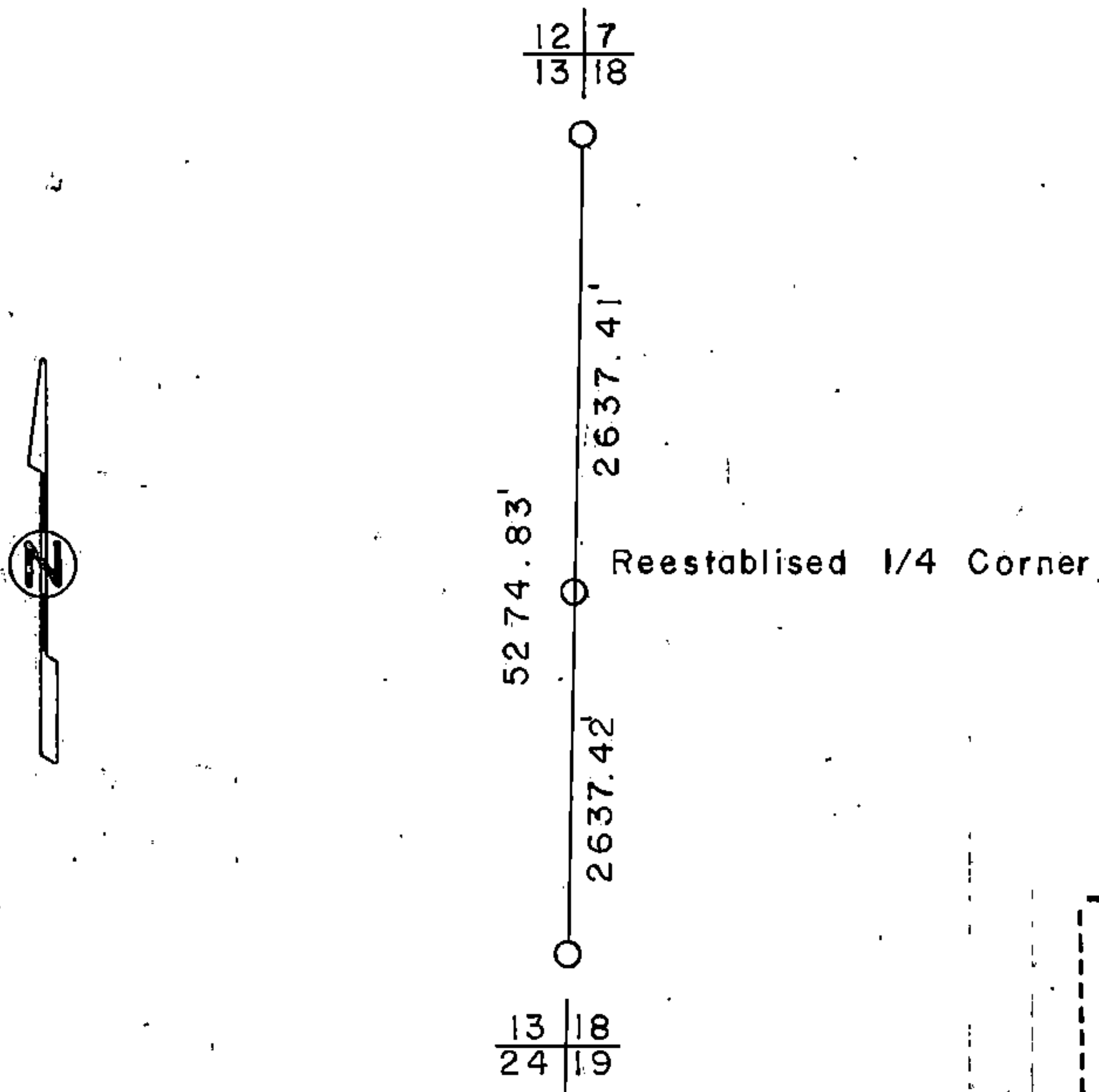
By Deputy

43713132000

Describe any material discrepancy between the location of the corner as restored or reestablished and the location of that corner as previously restored or reestablished by distance and direction. Show the discrepancy on the plan view drawing under (d), above. Show the distances between the corner as previously restored or reestablished and (1) the corner as restored or reestablished, and (2) to at least 2 of the witness monuments shown on the drawing in (d), above.

Was the corner restored through acceptance of (1) an obliterated evidence location, or, (2) a found perpetuated location?

Was the corner reestablished through lost corner proportionate methods? If so, show the method, including the directions and distances to other public land survey corners used as evidence or used for proportioning in determining the corner location?



1. Glen Barker

(Type or print name) certify that the corner location shown on this record was determined by me or under my direction and control and that this U.S. Public Land Survey Monument Record is correct and complete to the best of my knowledge and belief.

Signature

Date

3/31/89

U. S. PUBLIC LAND SURVEY MONUMENT RECORD

INSTRUCTIONS:

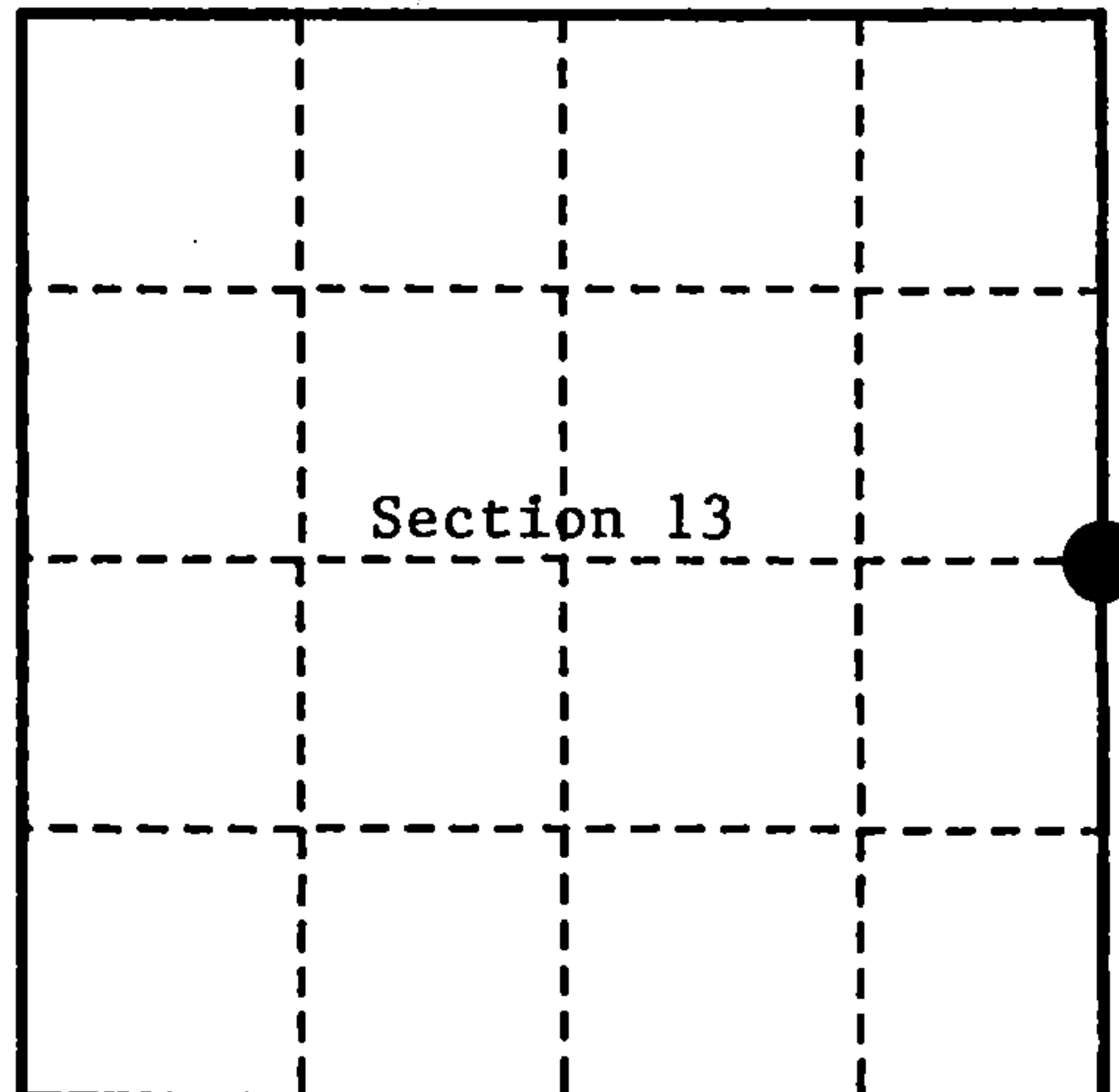
This record shall show the location of the corner and shall include all of the following nine elements (a through i).

- (a) Identify the corner by reference to the U.S. public land survey system.
 ○ = Corner monument restored.

Quarter Corner between Sections 13 and 18,
 T.37 N., R.13 E., Forest County, Wisconsin.

State Plane Coordinates, Wisconsin North Zone
 N - 192283.132
 E - 2275147.185

Geographic Coordinates
 N - 45°41'15.475"
 W - 88°48'00.277"



- (b) Describe any record evidence, monument evidence, occupational evidence, testimonial evidence or any other material evidence you considered, and whether the monument was found or placed.

Original survey in 1865, by J.L. Nowlin. At 40.00 chains set wood post and made the following bearing trees: Fir, 14" S.55°E. 7 links (4.62 feet); Fir, 10" N.42°W. 30 links (19.80 feet)/

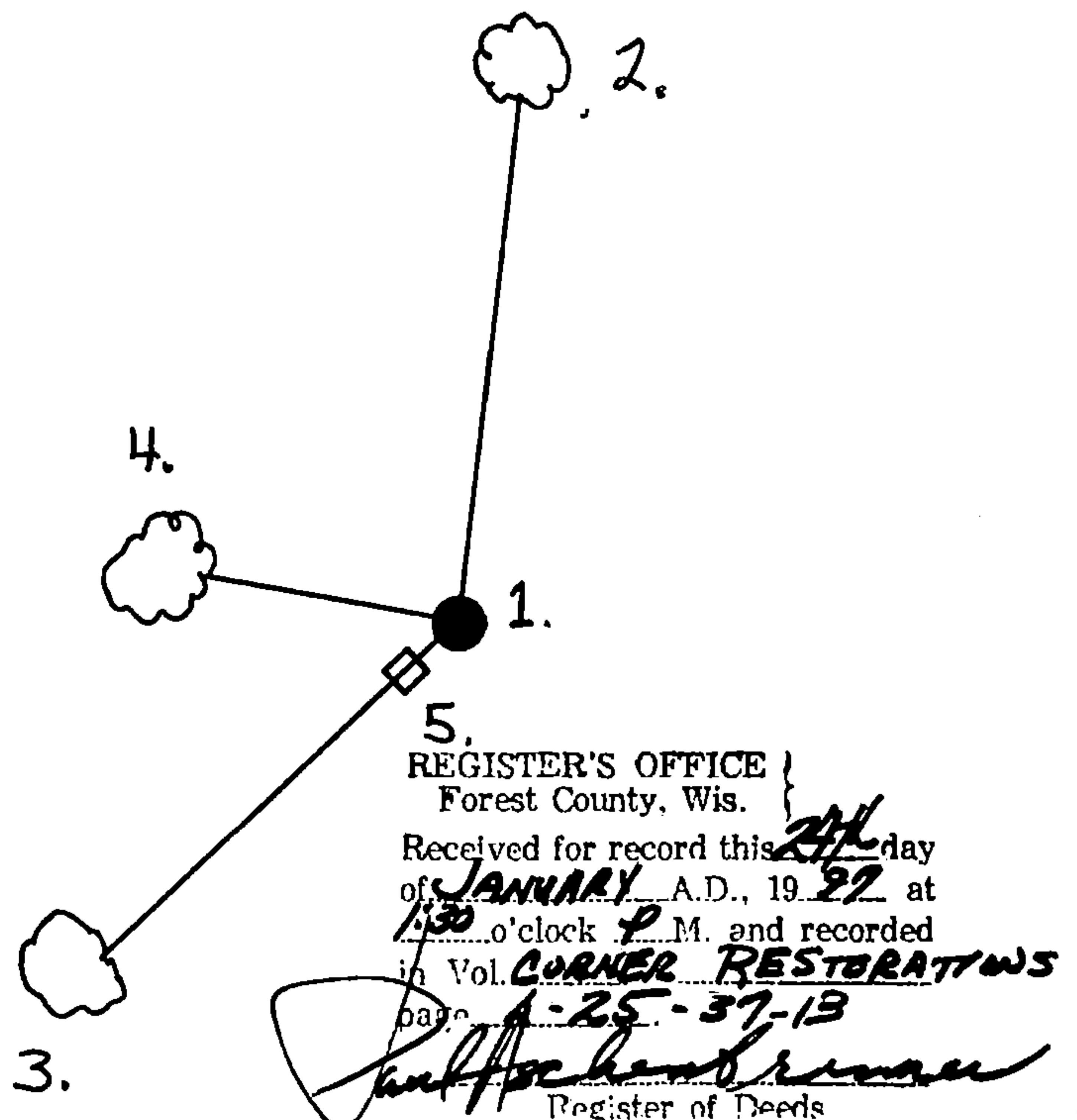
In 1989, Glen Barker, R.L.S., restored the corner position by proportionate measurement. Set a 2½" aluminum monument (Forest County) with a 3" alloy cap stamped to identify corner location. Blazed and scribed the following: Sugar, 6" S.51°E. 17.34 feet; Sugar, 5" N.07°E. 49.55 feet; Sugar, 5" S.44°W. 53.68 feet; Sugar, 5" N.58°W. 22.97 feet.

In 1996, Alan Harrison, R.L.S., found monument and bearing trees as set by Glen Barker. Cut down NW bearing tree for G.P.S. observation and made new replacement. Southeast bearing tree set by Barker is dead and down.

- (c) In the plan view drawing below, provide reference ties to at least 4 witness monuments, or, if the location is within a municipality, to at least 2 witness monuments. (witness monuments shall be made of concrete, natural stone, iron or other equally durable material.)

- (d) Show a plan view drawing depicting the relevant monuments and reference ties which is sufficient in detail to enable accurate relocation of the corner monument if the corner monument is disturbed. Indicate north.

1. 2½ Aluminum Forest County Monument with cap stamped to identify corner location.
2. Sugar 7" N.09°E. 49.54 feet.
3. Sugar 7" S.45°W. 53.60 feet.
4. Sugar 9" N.71°W. 26.62 feet. (New B.T.)
5. Steel sign post, Southwest 0.80 feet.



(e) Describe any material discrepancy between the location of the corner as restored or reestablished and the location of that corner as previously restored or reestablished by distance and direction. Show the discrepancy on the plan view drawing under (d). above. Show the distances between the corner as previously restored or reestablished and (1) the corner as restored or reestablished, and (2) to at least 2 of the witness monuments shown on the drawing in (d), above.

None

(f) Was the corner restored through acceptance of (1) an obliterated evidence location, or, (2) a found perpetuated location?

2) a found perpetuated location.

(g & h) Was the corner reestablished through lost corner proportionate methods? If so, show the method, including the directions and distances to other public land survey corners used as evidence or used for proportioning in determining the corner location?

No.

(1) I, Alan D. Harrison, R.L.S.

(type or print name) certify that the corner location shown on this record was determined by me or under my direction and control and that this U.S. Public Land Survey Monument Record is correct and complete to the best of my knowledge and belief.

Signature

Date

CERTIFICATE READY FOR FILING:

District Ranger

