

Document Number

197420

REGISTER'S OFFICE
Forest County, Wis.
Received for record this 15th day
of May A.D., 2008 at
11:50 o'clock A.M. and recorded
in Vol. Corner Restoration
page T-9
Kay Swanson, Deputy
Register of Deeds

U.S. PUBLIC LAND SURVEY MONUMENT RECORD

(AS REQUIRED BY S. A-E 7.08, WI ADM. CODE)

HISTORY OF ORIGINAL CORNER ESTABLISHMENT AND SUBSEQUENT RESTORATIONS AND DESCRIPTION OF ANY RECORD, MONUMENT, OCCUPATIONAL, TESTIMONIAL, OR OTHER EVIDENCE CONSIDERED:

1865 - J.L. NOWLIN, SURVEYOR, SET POST

SET THE FOLLOWING WITNESSES:
SUGAR MAPLE 12" N46°E 45 LINKS
BIRCH 10" S71°W 100 LINKS

1977 - PHILIP T. HANSEN, SURVEYOR, S-498, SET A SURVEY SPIKE AT THE INTERSECTION OF BLACK BEAR STREET AND HWY 32 & 55, AND CEMETERY ROAD TO THE WEST. SET A 2-1/2" BERNTSEN A-1 FEDERAL MONUMENT, ALUMINUM WITH MAGNET IN CAP AND BASE, FOR A WITNESS CORNER N50°E 70 LINKS.
SET B.O.'S - NW CORNER OF ARGONNE P.O. S47°E, 107.11 LINKS.
NE CORNER TELEPHONE BUILDING S44°W, 115 LINKS.
POWER POLE #3713 - 29R19 S14°W, 141.5 LINKS (SPIKE)

2006 - JAMES H. MOORE, SURVEYOR, S-1641, FOUND A PK NAIL AT THE INTERSECTION OF QUARTER LINE RD. AND HWY 32 & 55. U.S. PUBLIC LAND SURVEY MONUMENT RECORD. DOCUMENT NO. 189924.
SET THE FOLLOWING WITNESSES:

1" IRON PIPE w/ CEC CONTROL CAP	S80°W	105.12 FEET	- SET PIPE 6.5' NORTH OF EXISTING FENCE LINE.
1" IRON PIPE w/ CEC CONTROL CAP	N66°W	97.63 FEET	- SET PIPE 3' NORTH OF EXISTING POWER POLE.
1" IRON PIPE w/ CEC CONTROL CAP	N78°E	115.19 FEET	- SET PIPE 4' NORTH OF EXISTING POWER POLE.
1" IRON PIPE w/ CEC CONTROL CAP	S48°E	68.20 FEET	- SET PIPE 4' NORTH OF NW CORNER OF POST OFFICE.

CORNER WAS: (CHECK ALL THAT APPLY)

- ☒ RESTORED THROUGH ACCEPTANCE OF AN OBLITERATED LOCATION
☐ RESTORED THROUGH ACCEPTANCE OF A FOUND PERPETUATED LOCATION
☐ CONSIDERED A LOST CORNER AND REESTABLISHED THROUGH LOST CORNER PROPORTIONATE METHODS (INCLUDING A PLAN VIEW DRAWING SHOWING DISTANCES AND DIRECTIONS TO OTHER PUBLIC LAND SURVEY CORNERS USED FOR PROPORTIONING AND DETERMINING THE CORNER LOCATION)
☐ RESTORED OF REESTABLISHED IN A LOCATION THAT DIFFERS FROM A PREVIOUS RESTORATION OF REESTABLISHMENT (INCLUDE A PLAN VIEW DRAWING AND INDICATE WHAT WAS SET AND/OR FOUND)

DESCRIBE THE MONUMENT AND ACCESSORIES USED TO PERPETUATE THE LOCATION OF THIS CORNER. (INCLUDE A PLAN VIEW DRAWING AND INDICATE WHAT WAS SET AND/OR FOUND)

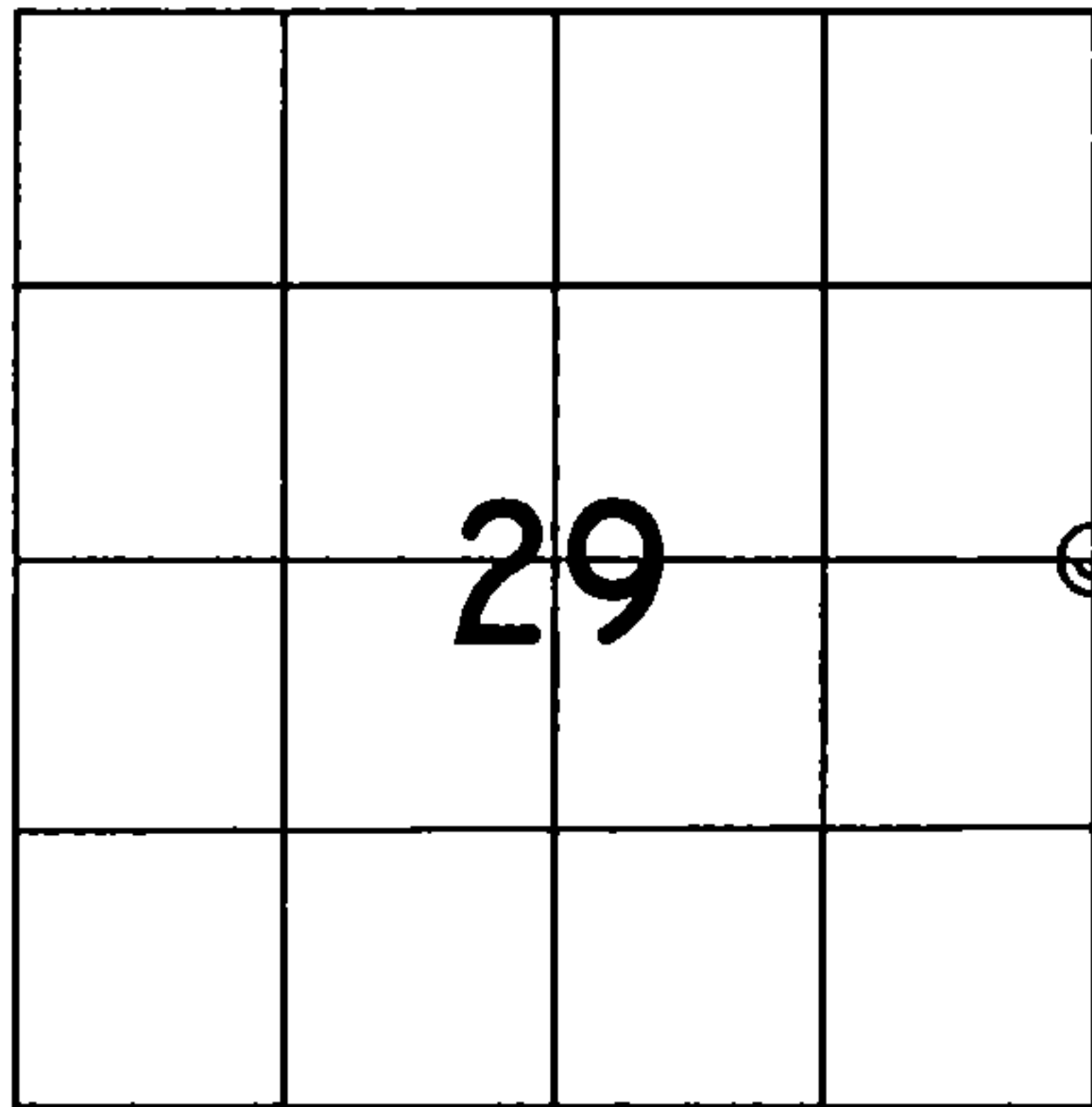
CORNER WAS REMOVED DURING CONSTRUCTION. CORNER WAS RESET USING U.S. PUBLIC LAND SURVEY MONUMENT RECORD DOCUMENT NUMBER 189924 WITNESSES.

SET A SURVEY SPIKE AT THE CENTERLINE-CENTERLINE INTERSECTION OF QUARTER LINE RD AND HWY 32 & 55.

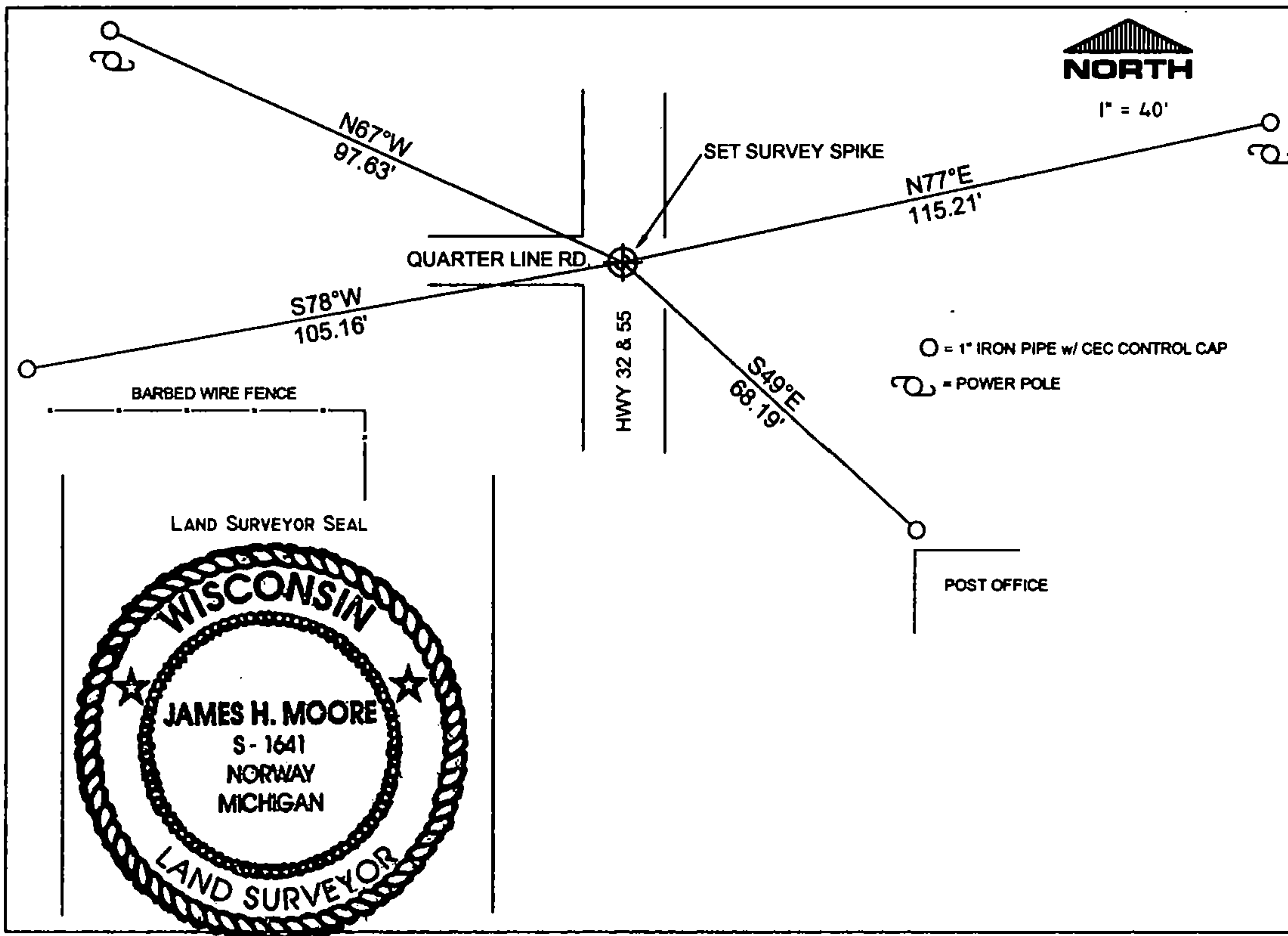
FOUND THE FOLLOWING WITNESSES:

1" IRON PIPE w/ CEC CONTROL CAP	S78°W	105.16 FEET	- FOUND PIPE 6.5' NORTH OF EXISTING FENCE LINE.
1" IRON PIPE w/ CEC CONTROL CAP	N67°W	97.63 FEET	- FOUND PIPE 3' NORTH OF EXISTING POWER POLE.
1" IRON PIPE w/ CEC CONTROL CAP	N77°E	115.21 FEET	- FOUND PIPE 4' NORTH OF EXISTING POWER POLE.
1" IRON PIPE w/ CEC CONTROL CAP	S49°E	68.19 FEET	- FOUND PIPE 4' NORTH OF NW CORNER OF POST OFFICE.

THE E 1/4
CORNER OF SECTION 29,
T. 37 N., R. 13 E.,
FOREST COUNTY, WISCONSIN



⊕ = LOCATION OF CORNER



I, JAMES H. MOORE PS S-1641

(TYPE OR PRINT NAME) CERTIFY THAT THE CORNER LOCATION SHOWN ON THIS ABOVE RECORD WAS DETERMINED BY ME OR UNDER MY DIRECTION AND CONTROL AND THAT THIS U.S. PUBLIC LAND SURVEY MONUMENT RECORD IS CORRECT AND COMPLETE TO THE BEST OF MY KNOWLEDGE AND BELIEF.

INDEX No. T-9

SIGNATURE

DATE

5-15-08

43713292000

T-9
6-1

Document Number

189924

REGISTER'S OFFICE
Forest County, Wis.
Received for record this 18th day
of January A.D., 2006 at
9:00 o'clock AM, and recorded
in Vol. Corner Restoration
page T-9
Kay Swanson, Deputy
Register of Deeds

U.S. PUBLIC LAND SURVEY MONUMENT RECORD

(AS REQUIRED BY S. A-E 5.02, WI ADM. CODE)

HISTORY OF ORIGINAL CORNER ESTABLISHMENT AND SUBSEQUENT RESTORATIONS AND DESCRIPTION OF ANY RECORD, MONUMENT, OCCUPATIONAL, TESTIMONIAL, OR OTHER EVIDENCE CONSIDERED:

1865 - J.L. NOWLIN, SURVEYOR, SET POST

SET THE FOLLOWING WITNESSES:
SUGAR MAPLE 12" N46°E 45 LINKS
BIRCH 10" S71°W 100 LINKS

CORNER WAS: (CHECK ALL THAT APPLY)

- ☐ RESTORED THROUGH ACCEPTANCE OF AN OBLITERATED LOCATION
☒ RESTORED THROUGH ACCEPTANCE OF A FOUND PERPETUATED LOCATION
☐ CONSIDERED A LOST CORNER AND REESTABLISHED THROUGH LOST CORNER PROPORTIONATE METHODS (INCLUDING A PLAN VIEW DRAWING SHOWING DISTANCES AND DIRECTIONS TO OTHER PUBLIC LAND SURVEY CORNERS USED FOR PROPORTIONING AND DETERMINING THE CORNER LOCATION)
☐ RESTORED OF REESTABLISHED IN A LOCATION THAT DIFFERS FROM A PREVIOUS RESTORATION OF REESTABLISHMENT (INCLUDE A PLAN VIEW DRAWING AND INDICATE WHAT WAS SET AND/OR FOUND)

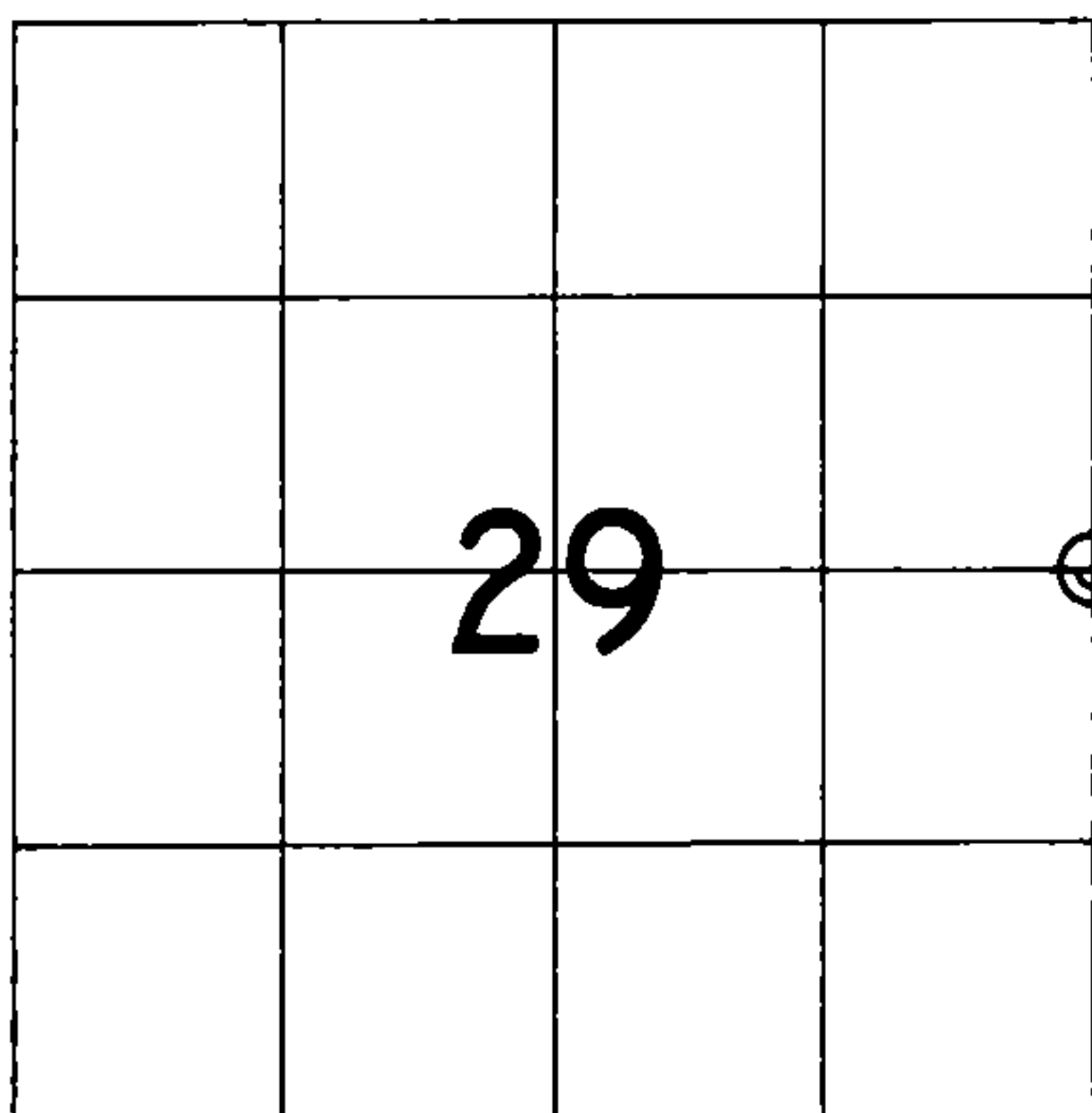
DESCRIBE THE MONUMENT AND ACCESSORIES USED TO PERPETUATE THE LOCATION OF THIS CORNER. (INCLUDE A PLAN VIEW DRAWING AND INDICATE WHAT WAS SET AND/OR FOUND)

FOUND A PK NAIL AT THE INTERSECTION OF QUARTER LINE RD AND HWY 32 & 55

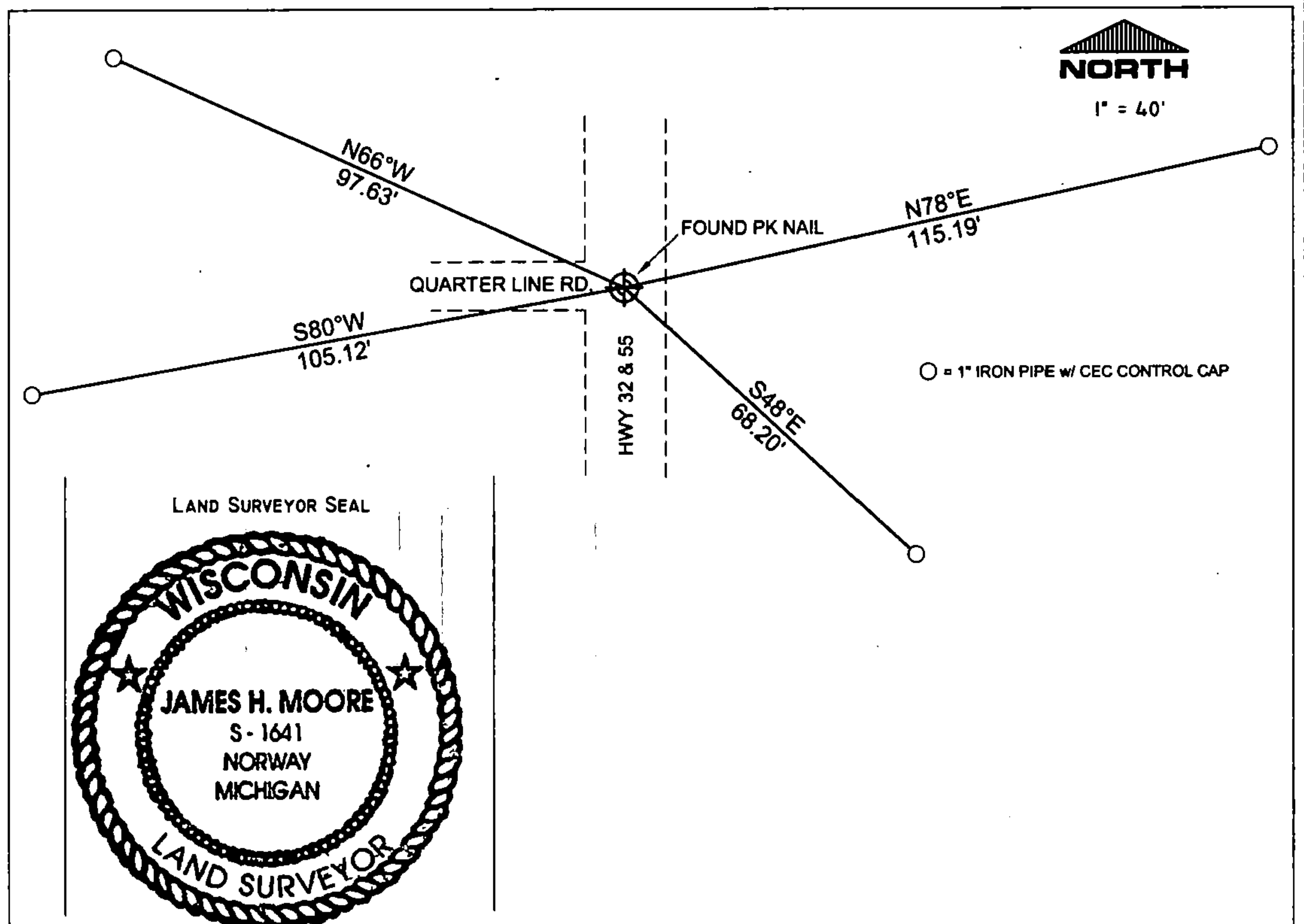
SET THE FOLLOWING WITNESSES:

1" IRON PIPE w/ CEC CONTROL CAP	S80°W	105.12 FEET - SET PIPE 6.5' NORTH OF EXISTING FENCE LINE.
1" IRON PIPE w/ CEC CONTROL CAP	N66°W	97.63 FEET - SET PIPE 3' NORTH OF EXISTING POWER POLE.
1" IRON PIPE w/ CEC CONTROL CAP	N78°E	115.19 FEET - SET PIPE 4' NORTH OF EXISTING POWER POLE.
1" IRON PIPE w/ CEC CONTROL CAP	S48°E	68.20 FEET - SET PIPE 4' NORTH OF NW CORNER OF POST OFFICE.

THE E 1/4
CORNER OF SECTION 29,
T. 37 N., R. 13 E.,
FOREST COUNTY, WISCONSIN



⊕ = LOCATION OF CORNER



I, JAMES H. MOORE PS S-1641

(TYPE OR PRINT NAME) CERTIFY THAT THE CORNER LOCATION SHOWN ON THIS ABOVE RECORD WAS DETERMINED BY ME OR UNDER MY DIRECTION AND CONTROL AND THAT THIS U.S. PUBLIC LAND SURVEY MONUMENT RECORD IS CORRECT AND COMPLETE TO THE BEST OF MY KNOWLEDGE AND BELIEF.

INDEX No. E-10

James H. Moore 1-16-06
SIGNATURE DATE

43713292000

T-9

CERTIFIED LAND CORNER RESTORATION

Index No. 7-9

State of Wisconsin }
County of Forest } ss.

I Philip T. Hansen, do hereby
certify that on the 11th day
of November, 1977, I found
evidence of the Quarter
corner of Section 28 & 29
Township 37, North, Range
13 East, Fourth Principal Meridian,
as described hereon; and that from this evidence
I established a new monument and accessories
as described hereon to perpetuate the original
location of this corner.

Resident witnesses:

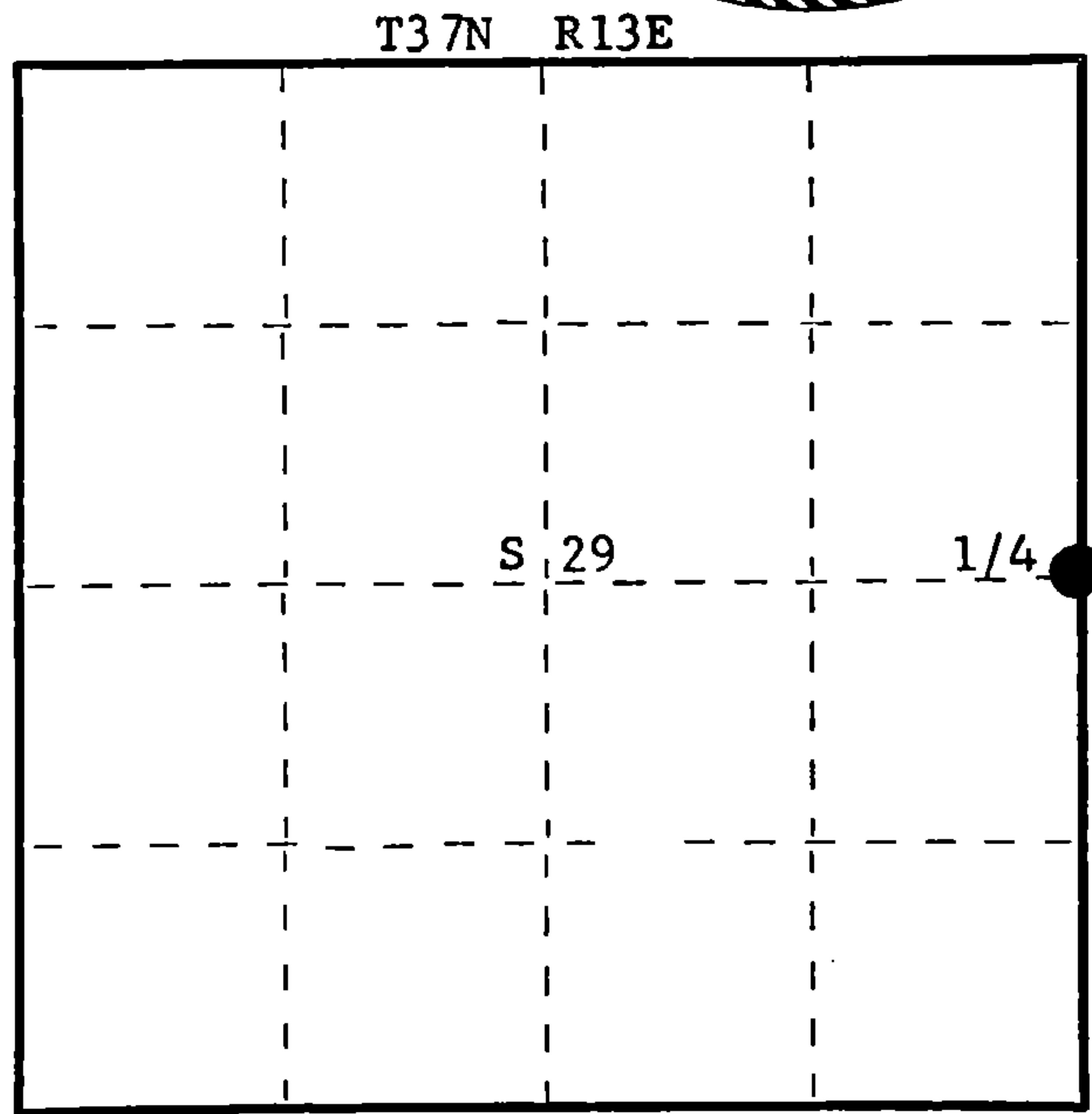
Glen Barker

Jim Claflin

Herb Wagoner



FORM 985 H. C. MILLER CO., MILWAUKEE



○ = Corner monument restored.

History of original corner establishment:
No record of any survey to the original survey.

Description of corner evidence found:
Accepted the intersection of Black Bear Street, town of Argonne, with section line,
centerline of Highway 32 & 55 as the 1/4 corner. This point has been used for
description of outlet to the NE and to subdivision of NESE, Section 29.

Description of monument and accessories I established to perpetuate the original location of this corner.
Set survey spike at the intersection of Black Bear Street and Highway 32 & 55, and
cemetery road to the west.
Set 2 1/2" Berntsen A-1 Federal Monument, aluminum with magnet in cap and base, for
witness corner N50°E, 70 links. Monument projects 10" above ground. Cap stamped:
Set B.O.'s - NW corner Argonne P.O. S47°E, 107.11 links.
NE corner telephone building S44°W, 115 links
Power Pole #3713 - 29R19 S14°W, 141.5 lks (spike)

T37N R13E
1/4 S29 + S28 W.C.
S498 - 1977
S50°E 70 lks. to Cor.

Dated at Rhineland, Wis., this 16th day of November, 1977

Signature Philip T. Hansen Title Registered Land Surveyor Registration No. S-498
(County Surveyor, Registered Land Surveyor, or other duly authorized official)

Office of Register of Deeds, County of Forest, I hereby certify that the within
instrument was filed in this office for record on the 17th day of November, 1977
at 4:00 o'clock P. M.

Eugene Stutzman (Register of Deeds)
By _____ Deputy
DOCUMENT NUMBER **112819**

113713 292000