

CERTIFIED LAND CORNER RESTORATION

Index No. **X-9**

State of Wisconsin } ss.
County of Forest

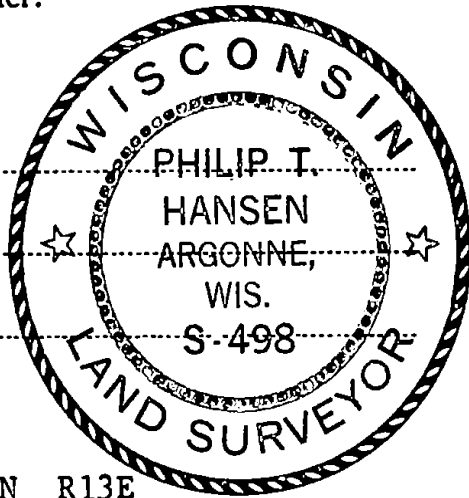
I Philip T. Hansen, do hereby
certify that on the 14th day
of November, 1977, I found
evidence of the Quarter
corner of Section 32 - 33
Township 37, North, Range
13 East, Fourth Principal Meridian,
as described hereon; and that from this evidence
I established a new monument and accessories
as described hereon to perpetuate the original
location of this corner.

Resident witnesses:

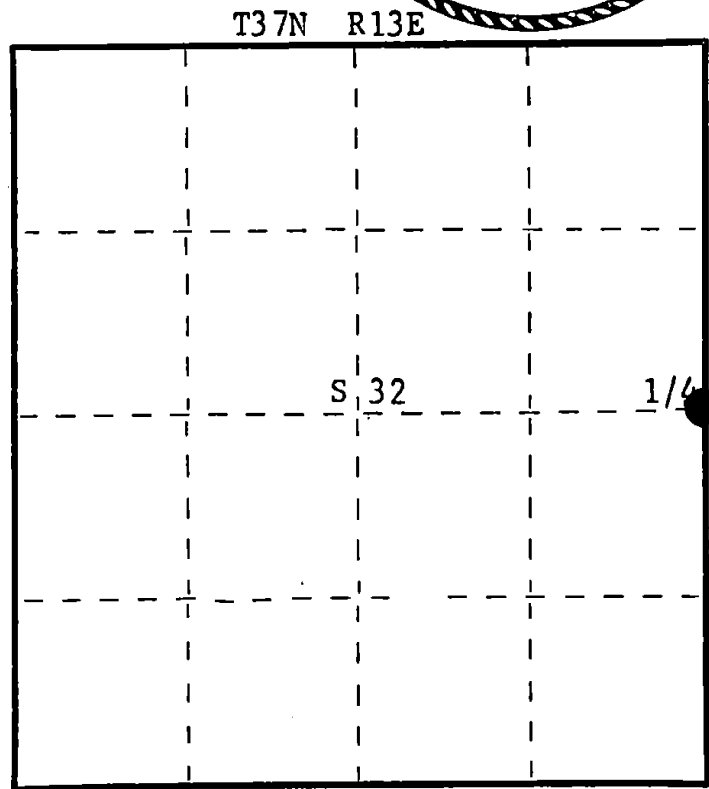
Glen Barker

Jim Claflin

Herb Wagoner



FORM 985 H. C. MILLER CO., MILWAUKEE



○ = Corner monument restored.

History of original corner establishment:

No record of survey subsequent to the original survey.

Description of corner evidence found:

Recovered a P.K. at intersection of State Highway 32 and County Trunk N. This has been
used for subdivision of parcels in the SW SW 1/4 Section 33. A section line fence runs
east from this point.

Description of monument and accessories I established to perpetuate the original location of this corner.

Replaced P.K. with a 1/2" x 6" survey spike driven into the blacktop of State Highway 55.
Set a 2 1/2" Berntsen A-1 Federal Monument for witness corner 50 links east.

Monument projects 10" above ground. Cap stamped:

Marked B.O. - Power pole 3713 - 32E10 N14°W, 227.2 links

Spike in highway post, N77°W, 158.2 links

T37N R13E
1/4 S2 S33 W.C.

S498 - 1977
W. 50 lks. to Cor.

Dated at Rhinelander, Wis., this 16th day of November, 1977.

Signature *Philip T. Hansen* Title Registered Land Surveyor Registration No. S-498
(County Surveyor, Registered Land Surveyor, or other duly authorized official)

Office of Register of Deeds, County of Forest, I hereby certify that the within
instrument was filed in this office for record on the 17th day of November, 1977
at 4:00 o'clock P. M.

Eugene Staszny
(Register of Deeds)

DOCUMENT NUMBER - 112821

By Deputy

4371332-2000

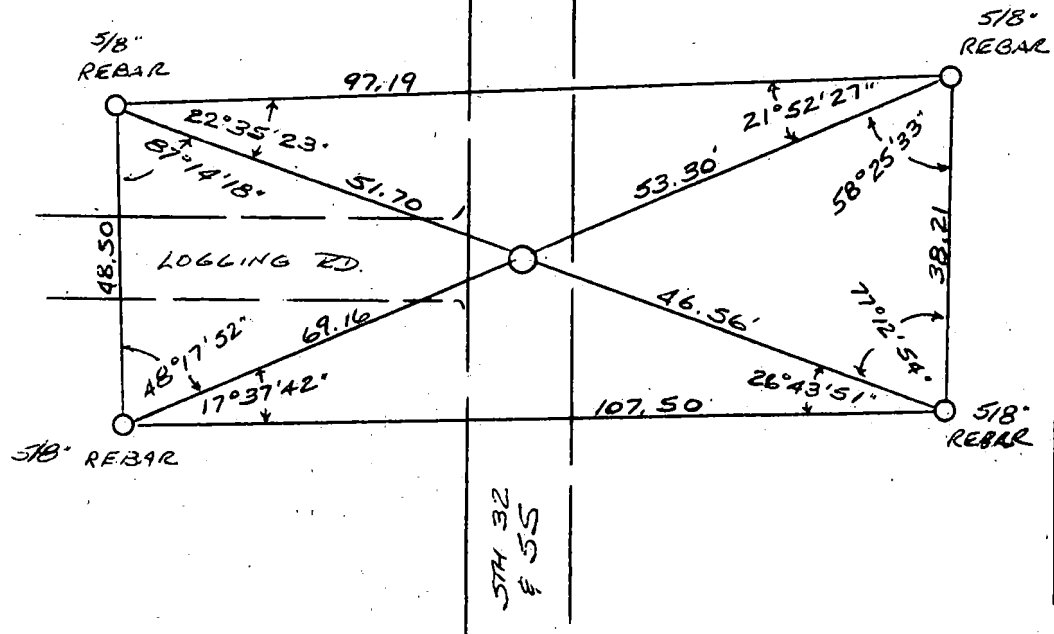
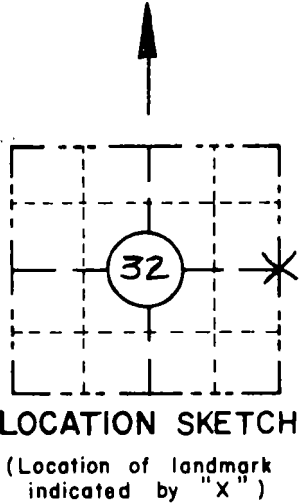
ORIGINAL ON FILE IN CO CLERK'S OFFICE
COPY HERE FOR REFERENCE

RECORD AND CERTIFICATION OF U.S.
PUBLIC LAND SURVEY CONTROL STATION
E-D-716-72

State of Wisconsin / Department of Transportation

District 7	Project I. D. 9131-05-00	Located by R. JOHNSON SURVEY CREW CHIEF		
Corner E 1/4 32 SECTION	Township 37 N	Range (E,W) 13 E	County FOREST	
Wisconsin Coordinates CORNER	East (X)	North (Y)	Elevation (Z)	Zone
Control Station Name	East (X)	North (Y)	Elevation (Z)	Zone
Horizontal — NORTH AMERICAN, 1927		CONTROL DATUM Vertical — MEAN SEA LEVEL, 1929 ADJUSTMENT		
Horizontal — Order		SURVEY CONTROL Vertical — Order		

SKETCH



I hereby certify that on the 28th day of FEBRUARY 1992, that I did locate the above corner which was evidenced by 1/2" x 6" SPIKE;
I further certify that to perpetuate the location of such corner I did, at the exact location thereof, place a permanent marker consisting of _____;
I further certify that I did establish 4 references or witness monuments consisting of 5/8" x 24" REINFORCING BARS WITH RED PLASTIC WDOT CAPS located as shown above:

SEAL

Signature Registered Land Surveyor	Registration No. S--	Title
------------------------------------	-------------------------	-------

CORNER
EAST 1/4
SECTION
32
TOWN
37 N
RANGE
R 13 E

U.S. PUBLIC LAND SURVEY MONUMENT RECORD
FOREST COUNTY

TYPE OF MONUMENT: 3" MAG SURVEY SPIKE
WISCONSIN COUNTY COORDINATE SYSTEM (FOREST)
DATUM: NAD 83 (2011 ADJUSTMENT)
NORTHING 597678.86
EASTING 841217.91
DRAWN BY: ANDREW HUNTER

CORNER INDEX NO. X-9

SECTION 32
TOWN 37 NORTH
RANGE 13 EAST



BASIS FOR MONUMENT LOCATION

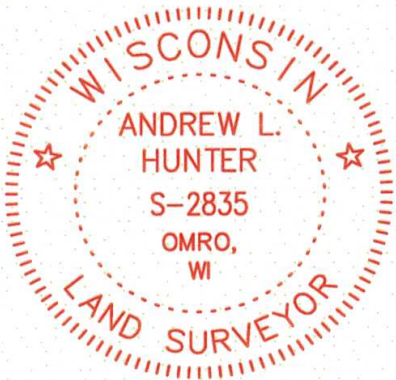
HISTORY OF ORIGINAL CORNER ESTABLISHMENT AND SUBSEQUENT RESTORATIONS AND DESCRIPTION OF ANY RECORD, MONUMENT, OCCUPATIONAL, TESTIMONIAL OR OTHER EVIDENCE CONSIDERED:

PREVIOUS TIE SHEETS PREPARED BY PHILLIP T. HANSEN DATED NOVEMBER 17, 1977 AND R. JOHNSON DATED FEBRUARY 28, 1992 BOTH CALL FOR A 1/2" X 6" SURVEY SPIKE.

I COMPLETED A FIELD SURVEY PRIOR TO HIGHWAY CONSTRUCTION ALONG S.T.H. "32" AND DID NOT FIND THE CALLED FOR MONUMENT BUT INSTEAD FOUND THE SHAFT OF A MAG NAIL IN ASPHALT.

3 WITNESS TIES WERE LOCATED AND MEASURED AS RECORDED ON THE TIE SHEET THAT WAS PREPARED FOR THE S.E. CORNER OF SECTION 29 BY R. JOHNSON ON FEBRUARY 28, 1992, WHICH WAS BELIEVED TO BE ERRONEOUSLY FILED. THEREFORE THE FOUND MAG NAIL SHAFT WAS ACCEPTED AS THE TRUE CORNER LOCATION. I SET A 3" MAG SURVEY SPIKE AFTER CONSTRUCTION WAS COMPLETED AND SET A MAG NAIL FOR WITNESS TIE AND VERIFIED THE 3 REMAINING WITNESS MONUMENTS.

SEAL:



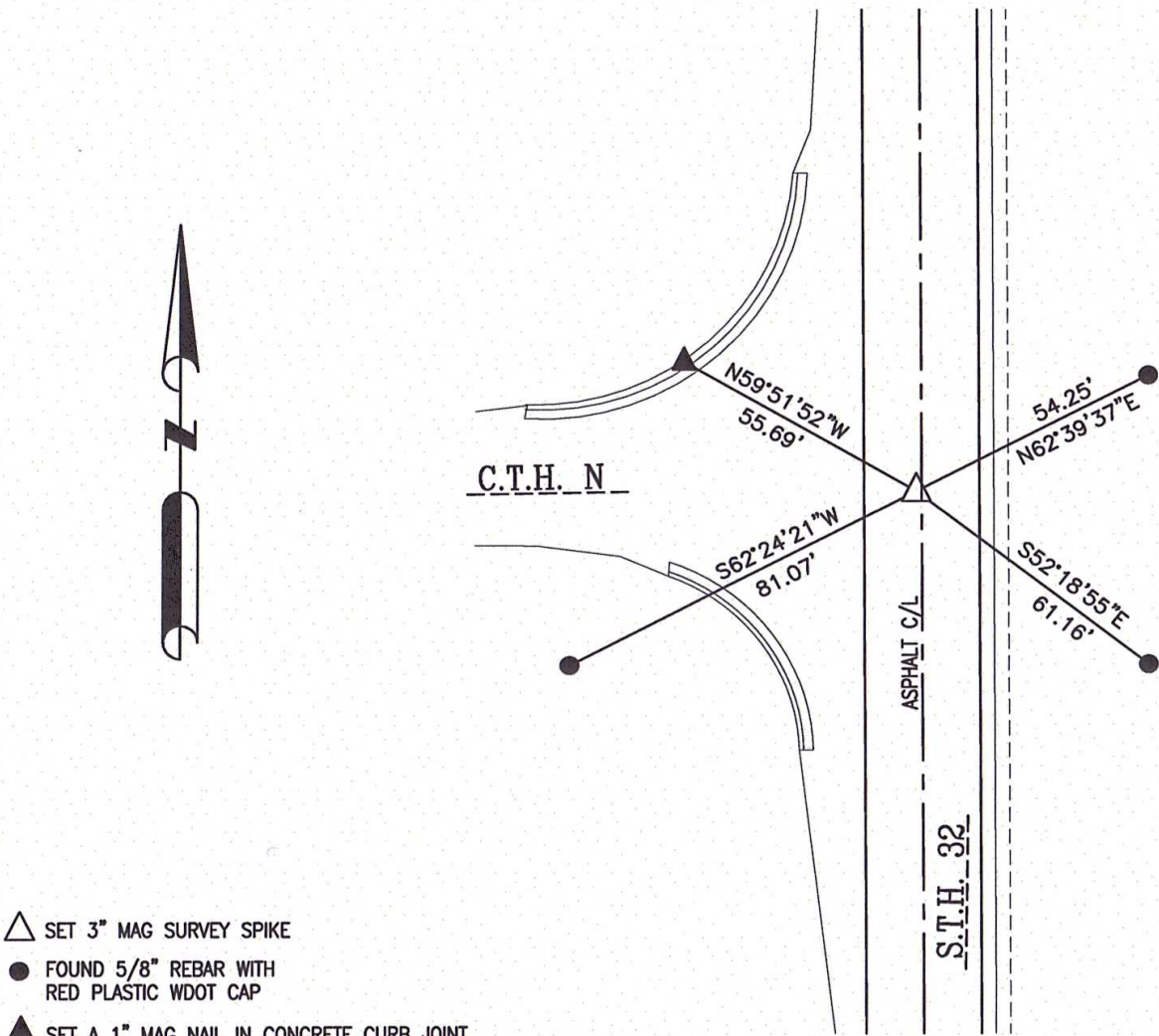
CERTIFIED CORRECT:

Andrew L. Hunter
PROFESSIONAL LAND SURVEYOR

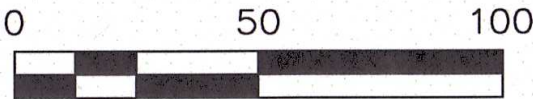
DATE OCTOBER 14, 2022

TIE SKETCH

SHOW AT LEAST FOUR TIES, ALSO FENCE LINES, ROADS, TOPO, SIZE AND TYPE OF WITNESS TREES AND ANY OTHER PERTINENT SITE DETAILS. IF OFF THE ROAD, THE BEST WAY TO ARRIVE AT THE CORNER.



- △ SET 3" MAG SURVEY SPIKE
- FOUND 5/8" REBAR WITH RED PLASTIC WDOT CAP
- ▲ SET A 1" MAG NAIL IN CONCRETE CURB JOINT



SCALE 1"=50'

43713322000