

DOCUMENT NUMBER
142069

FORM 985 H. C. MILLER CO., MILWAUKEE

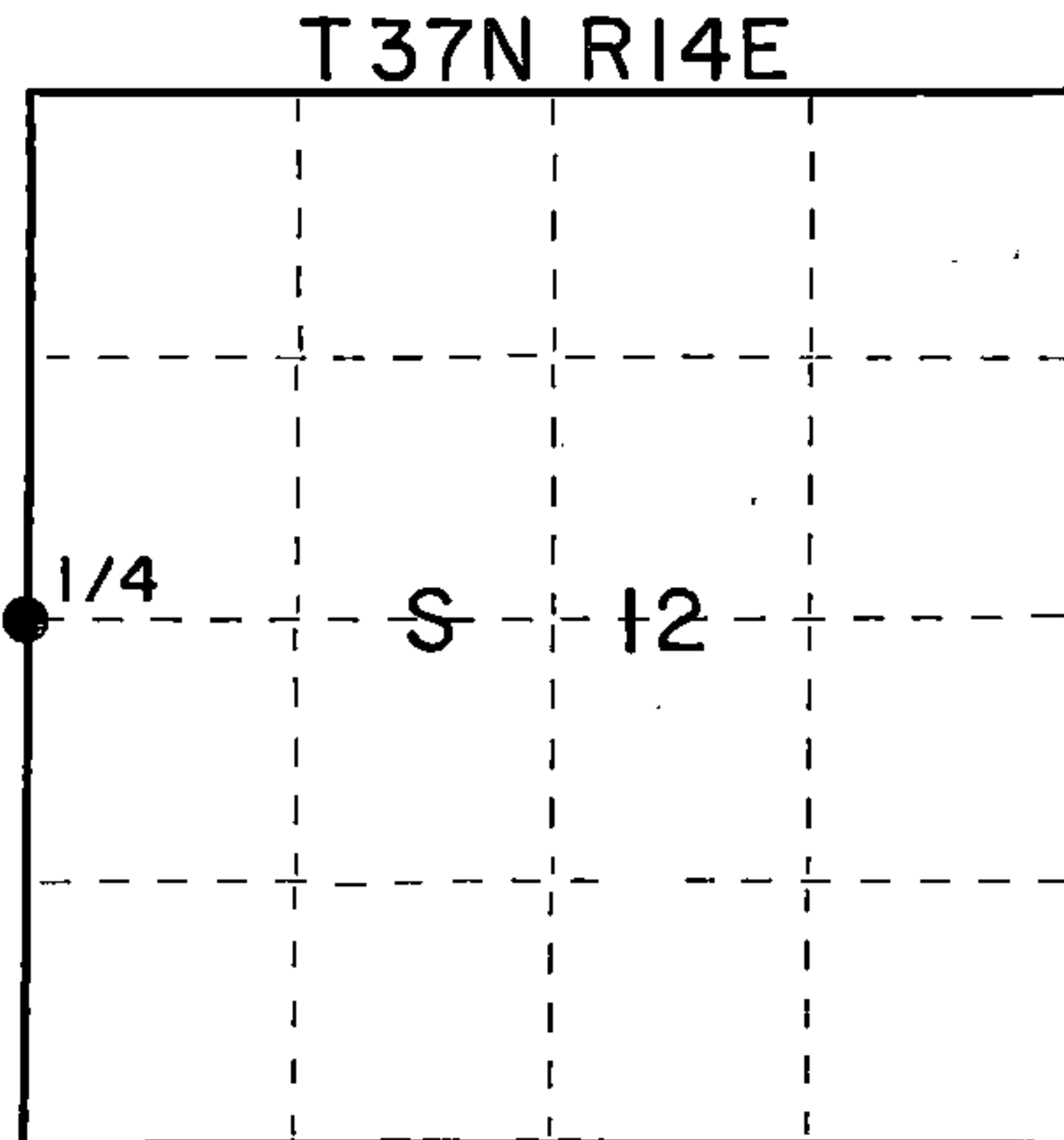
State of Wisconsin }
County of Forest } ss.

I Glen Barker, do hereby
certify that on the 4th day
of December, 1990, I found
evidence of the Quarter Section
corner of Sections 11 & 12
Township 37, North, Range
14 East, Fourth Principal Meridian,
as described hereon; and that from this evidence
I established a new monument and accessories
as described hereon to perpetuate the original
location of this corner.

Resident witnesses:

N. Spiess

J. Spiess



○ = Corner monument restored.

CERTIFIED LAND CORNER RESTORATION
U.S. PUBLIC LAND SURVEY RECORD

Index No. G-21

History of original corner establishment:

Original corner established by J.L. Nowlin Gov't Deputy Surveyor.

Description of corner evidence found:

Quarter Section corner re-established by proportionate method. Total distance
from northwest Section corner to southwest Section corner of Section 12 is
4929.54'.

No evidence of previous corner.

Description of monument and accessories I established to perpetuate the original location of this corner.

Set a 1" Forest County aluminum Monument with 2-1/2" alloy cap. Monument projects
6" above ground.

Set four (4) 1-1/4" iron pipes for reference pipe:

- 1) North 9.68'
- 2) East 10.32'
- 3) South 8.73'
- 4) West 8.28'

T37N R14E

1/4 S 11 S 12

S-1682
1990

Dated at Rhinelander, Wis., this 14th day of February, 1991

Signature _____ Title Registered Land Surveyor Registration No. S-1682
(County Surveyor, Registered Land Surveyor, or other duly authorized official)

Office of Register of Deeds, County of Forest, I hereby certify that the within
instrument was filed in this office for record on the 19th day of June, 1991
at 1:20 o'clock P. M.

Paul Achenbrenner
(Register of Deeds)

By _____ Deputy

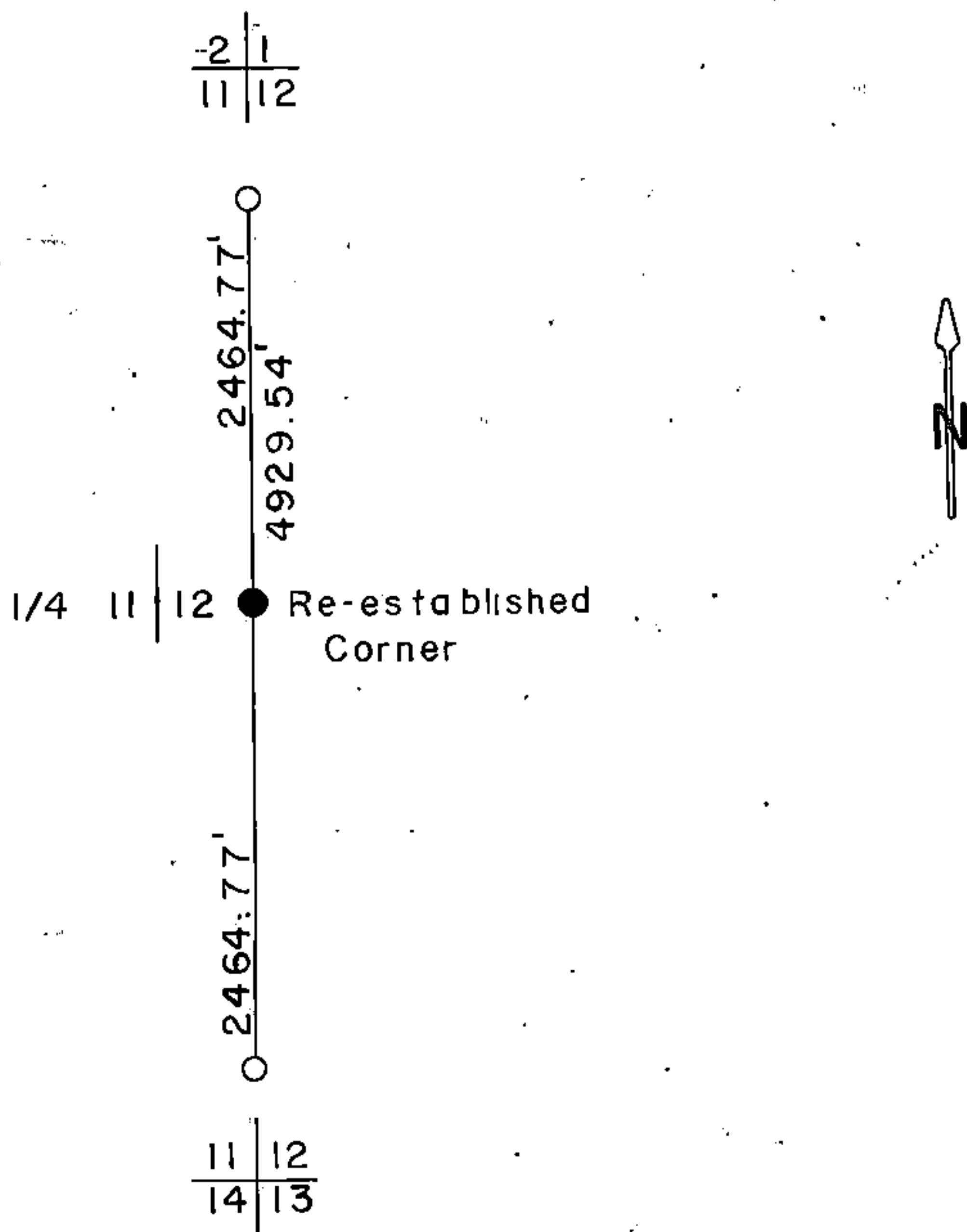
43714112000

e) Describe any material discrepancy between the location of the corner as restored or reestablished and the location of that corner as previously restored or reestablished by distance and direction. Show the discrepancy on the plan view drawing under (d), above. Show the distances between the corner as previously restored or reestablished and (1) the corner as restored or reestablished, and (2) to at least 2 of the monuments shown on the drawing in (d), above.

(f) Was the corner restored through acceptance of (1) an obliterated evidence location, or (2) a found perpetuated location?

(g&h) Was the corner reestablished through lost corner proportionate methods? If so, show the method, including the directions and distances to other public land survey corners used as evidence or used for proportioning in determining the corner location?

Proportionate method.



(i) I, Glen Barker
(type or print name) certify that the corner location shown on this record was determined by me or under my direction and control and that this U.S. Public Land Survey Monument Record is correct and complete to the best of my knowledge and belief.

Glen Barker
Signature

6/18/91
Date