

DOCUMENT NUMBER
142070

FORM 985 H. C. MILLER CO., MILWAUKEE

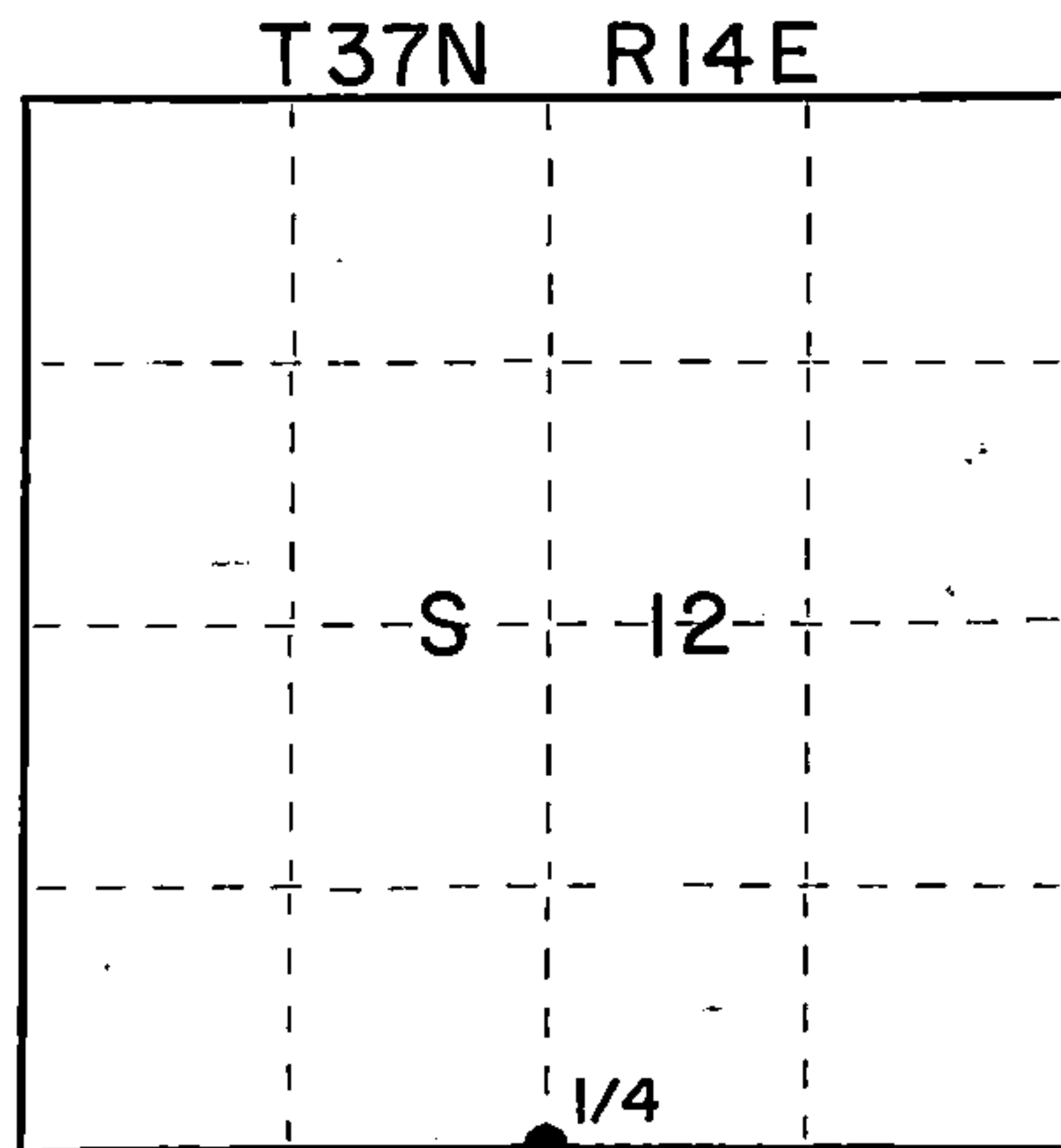
State of Wisconsin }
County of Forest } ss.

I Glen Barker, do hereby
certify that on the 12th day
of October, 19 90, I found
established corner of the Quarter Section
Sections 12 & 13
Township 37 North, Range
14 East, Fourth Principal Meridian,
as described hereon; and that from this evidence
I established a new monument and accessories
as described hereon to perpetuate the original
location of this corner.

Resident witnesses:

N. Spiess

J. Spiess



CERTIFIED LAND CORNER RESTORATION
U.S. PUBLIC LAND SURVEY RECORD

Index No. J-23

History of original corner establishment:

Original corner established by J.L. Nowlin, Gov't Deputy Surveyor.

Description of corner evidence found:

Re-established Quarter Section Corner on basis of survey stations and distances
from original Chicago & Northwestern railroad plans.

Quarter Section Corner sets 2740.0' intermediate of the southwest and southeast
Section Corner on a straight line between the two.

No evidence of previous corner.

Description of monument and accessories I established to perpetuate the original location of this corner.

Set a 1" Forest County aluminum pipe with 2-1/2" alloy cap stamped. Monument
projects 6" above ground.

Marked N.B.T.s

Red Pine 7" N25E 79.04'

Red Pine 8" N57E 73.97'

Red Maple 7" S80E 27.60'

Twin Red Maple 6" S9E 42.66'

T37N R14E

1/4 S 12 1990
S 13

S-1682

Corner sets 17.0' east of C.P.I. road.

Dated at Rhinelander, Wis., this 14th day of February, 19 91.

Signature _____ Title Registered Land Surveyor Registration No. S-1682
(County Surveyor, Registered Land Surveyor, or other duly authorized official)

Office of Register of Deeds, County of Forest, I hereby certify that the within
instrument was filed in this office for record on the 19th day of June, 19 91
at 1:20 o'clock P.M.

Paul Aschendorfer
(Register of Deeds)

By _____ Deputy

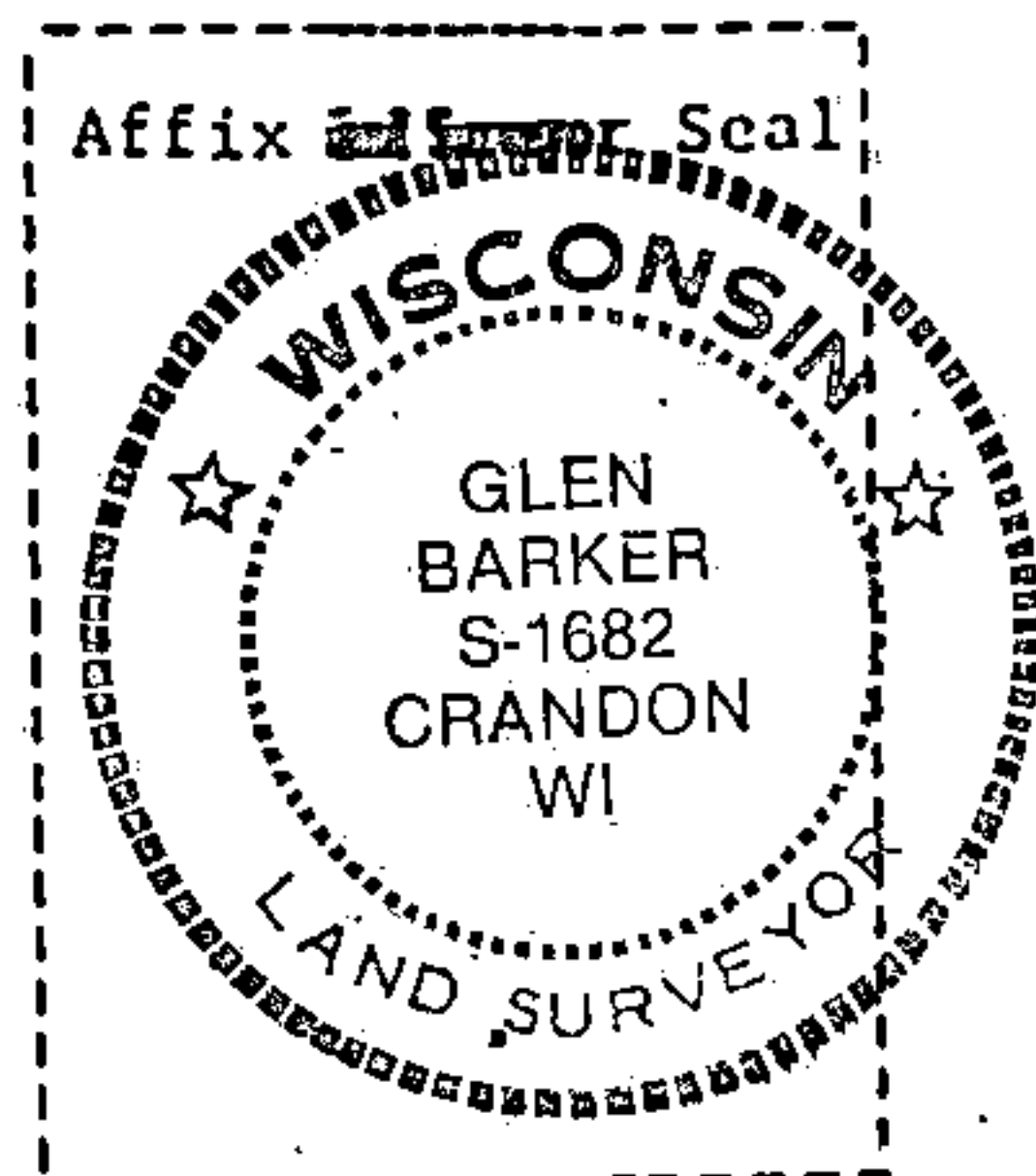
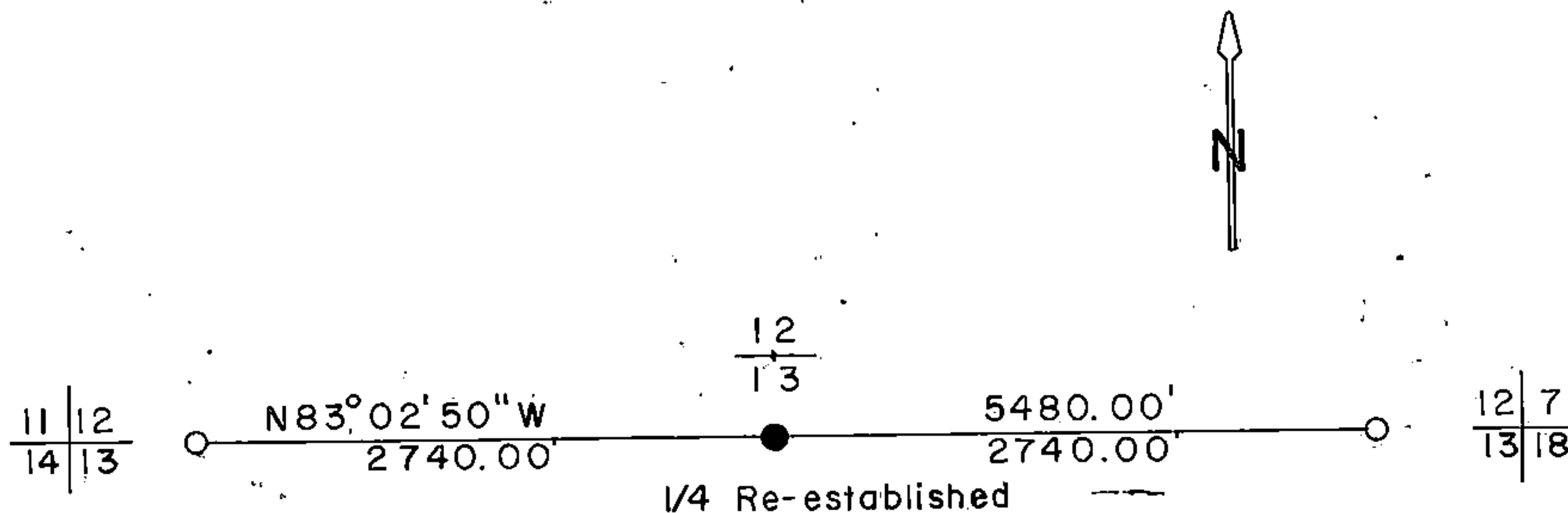
43714120020

(e) Describe any material discrepancy between the location of the corner as restored or reestablished and the location of that corner as previously restored or reestablished by distance and direction. Show the discrepancy on the plan view drawing under (d), above. Show the distances between the corner as previously restored or reestablished and (1) the corner as restored or reestablished, and (2) to at least 2 of the monuments shown on the drawing in (d), above.

(f) Was the corner restored through acceptance of (1) an obliterated evidence location, or (2) a found perpetuated location?

Retracement of Railroad plan.

(g&h) Was the corner reestablished through lost corner proportionate methods? If so, by the method, including the directions and distances to other public land survey corners as evidence or used for proportioning in determining the corner location?



(i) I, Glen Barker
(type or print name) certify that the corner location shown on this record was determined by me or under my direction and control and that this U.S. Public Land Survey Monument Record is correct and complete to the best of my knowledge and belief.

Glen Barker
Signature

6/18/91
Date