

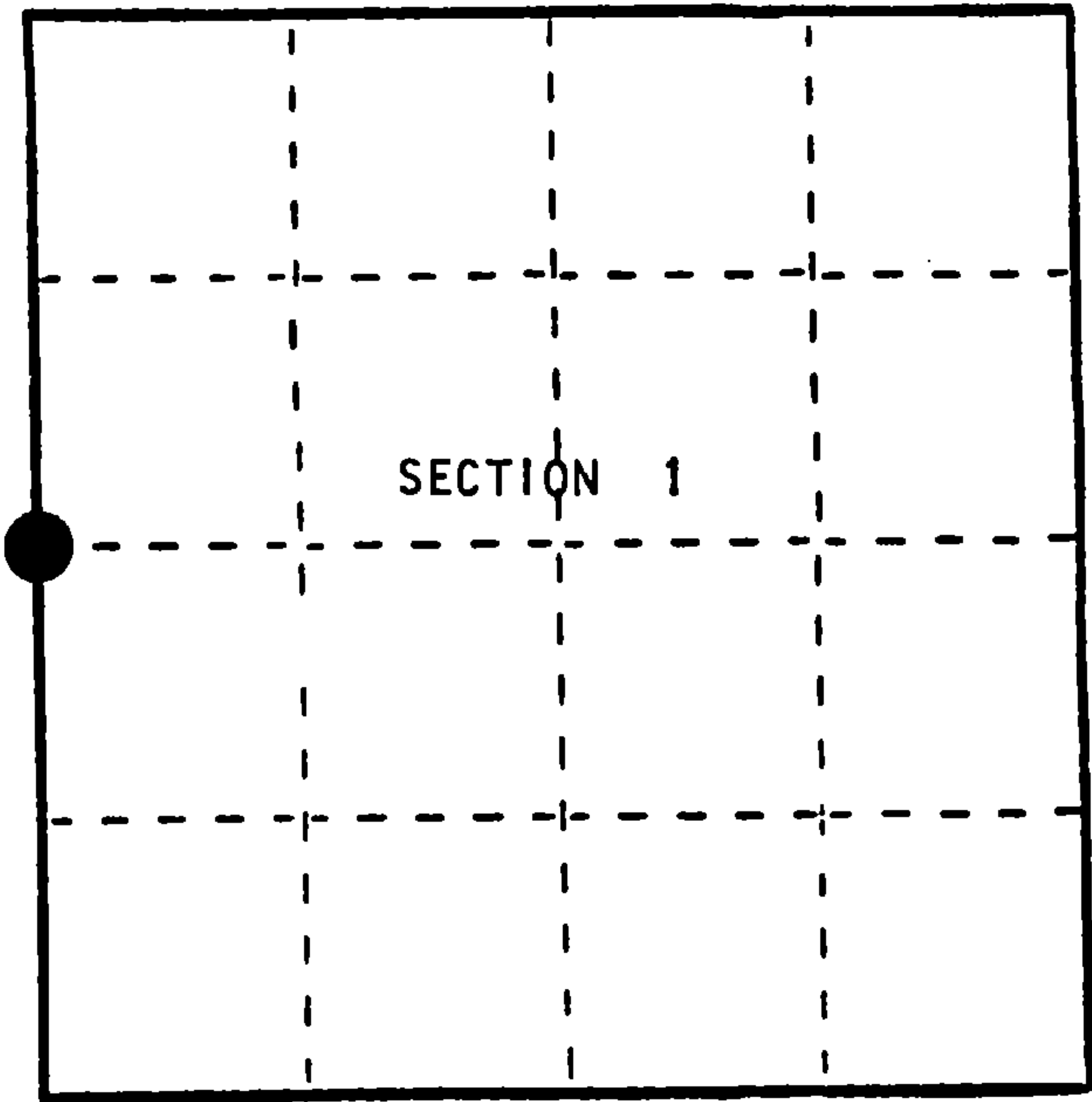
U. S. PUBLIC LAND SURVEY MONUMENT RECORD

INSTRUCTIONS: This record shall show the location of the corner and shall include all of the following nine elements (a through i).

- (a) Identify the corner by reference to the U.S. public land survey system.
- = Corner monument restored.

Witness Quarter Corner Between Sections 1 and 2, T37N, R15E, Forest County, Wisconsin

REGISTER'S OFFICE
Forest County, Wis.
Received for record this 30th day
of December, D. 1987 at
2:00 o'clock P. M. and recorded
in Vol. CORNER RESTORATIONS
page C-21
Paul Aschenbrenner
Register of Deeds



- (b) Describe any record evidence, monument evidence, occupational evidence, testimonial evidence or any other material evidence you considered, and whether the monument was found or placed.

The original corner established in 1865 by J.L. Nowlin. Set wooden post with the following bearing trees: Spruce 20" S22°W 12 lks.
W. Pine 10" N12°E 15 lks.

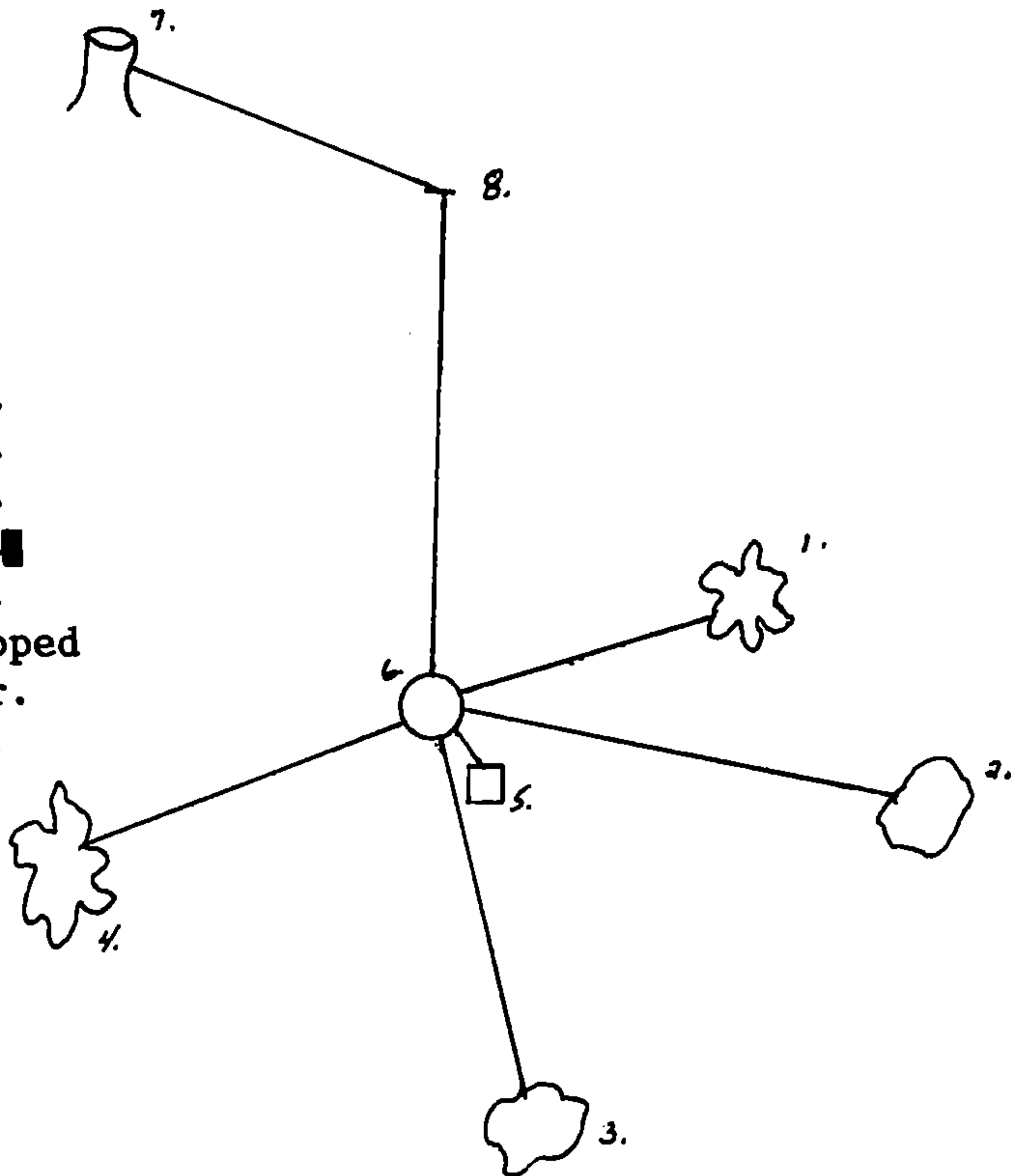
Recovered white stump with the blazing on the east side of stump. Does not fit GLO notes.
Found no other evidence.

Placed 2 1/2" dia. X 36" aluminum monument S01°03'W a distance of 250.00 feet from the computed Quarter corner.

- (c) In the plan view drawing below, provide reference ties to at least 4 witness monuments, or, if the location is within a municipality, to at least 2 witness monuments. (Witness monuments shall be made of concrete, natural stone, iron or other equally durable material.)
Describe witness monuments.

- (d) Show a plan view drawing depicting the relevant monuments and reference ties which is sufficient in detail to enable accurate relocation of the corner monument if the corner monument is disturbed. Indicate north.

- 1. Balsam 11" N72°E 5.30 ft.
- 2. Black cherry 5" S80°E 27.15 ft.
- 3. Red Maple 6" S14°E 27.36 ft.
- 4. White Pine 28" S66°W 33.48 ft.
- 5. Steel sign post SE 0.8 ft.
- 6. 2 1/2" dia. X 36" aluminum magnetic capped monument stamped to identify the corner.
- 7. White Pine N44°40'W 70.4 ft. from the computed Quarter corner.
- 8. Computed Quarter Corner.



- (e) Describe any material discrepancy between the location of the corner as restored or reestablished and the location of that corner as previously restored or reestablished by distance and direction. Show the discrepancy on the plan view drawing under (d), above. Show the distances between the corner as previously restored or reestablished and (1) the corner as restored or reestablished, and (2) to at least 2 of the witness monuments shown on the drawing in (d), above.

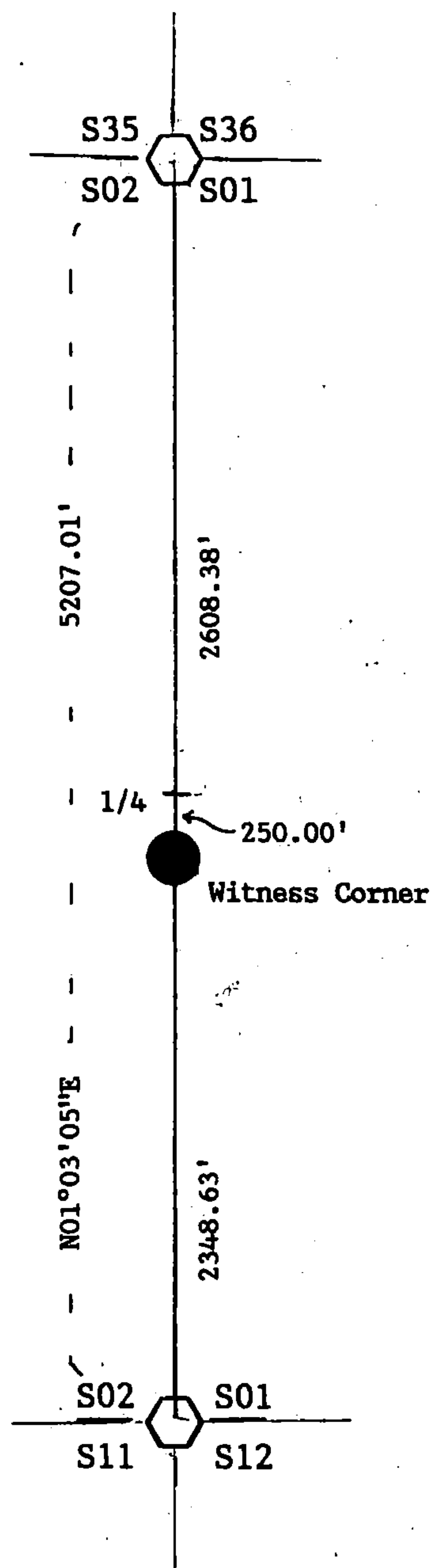
None.

- (f) Was the corner restored through acceptance of (1) an obliterated evidence location, or, (2) a found perpetuated location?

No.

- (g&h) Was the corner reestablished through lost corner proportionate methods? If so, show the method, including the directions and distances to other public land survey corners used as evidence or used for proportioning in determining the corner location?

Yes



- (i) I, John C. Schulke
(type or print name) certify that the corner location shown on this record was determined by me or under my direction and control and that this U.S. Public Land Survey Monument Record is correct and complete to the best of my knowledge and belief.

John C. Schulke
Signature

Oct 26, 1987
Date

